

Ectomycorrhizal diversity in a mature pedunculate oak stand near Morović, Serbia

Marina Milović,
Branislav Kovačević,
Milan Drekić,
Andrej Pilipović,
Saša Pekeč,
Lazar Kesić,
Milutin Đilas,
Velisav Karaklić,
Zoran Galić

Pedunculate oak is among the most economically important deciduous forest tree species in Europe and is also a host for many important ectomycorrhizal (ECM) fungi. The aim of this study was to analyse the ECM fungal community in a mature pedunculate oak stand near Morović, Serbia in spring and autumn. ECM fungi were determined by combining morpho-anatomical characterization of ectomycorrhizas with molecular analysis based on PCR amplification of the internal transcribed spacer region of fungal nuclear ribosomal DNA. The number of ECM fungal taxa and the number of different categories of fine roots were counted, diversity indices were calculated, and ECM fungi were classified into exploration types. Twenty-one ECM fungal taxa were recorded in the studied mature pedunculate oak stand, 19 in spring and 13 in autumn. ECM communities consisted of one dominant taxon and a larger number of rare taxa. *Lactarius quietus* was the most abundant ECM fungus in both seasons which made association with more than half of ECM root tips. At the stand near Morović, contact exploration type (ET) dominated, short-distance ET was less abundant, while medium-distance fringe ET and long-distance ET were rare in both seasons. The most pronounced difference between seasons is recorded in the number of ECM fungal taxa. The number of ECM fungal taxa and diversity indices recorded in the studied pedunculate oak stand were lower or similar compared to values obtained in stands of oak species across Europe.

Keywords: Ectomycorrhizal Fungi, *Quercus robur* L., Morpho-Anatomical Characterization, ITS Region

Introduction

Pedunculate oak (*Quercus robur* L.) belongs to the most economically important forest tree species in Europe because of its high-quality wood (Ducouso & Bordacs 2004, Eaton et al. 2016, Kesić et al. 2018). Its acorns are a valuable source of food for many animals giving it a great ecological role (Eaton et al. 2016). Furthermore, this species is heliophilous, and light-demanding which enables the regeneration of many other tree species and thus enriches forest biodiversity (Eaton et al. 2016). Pedunculate oak occurs in most European countries (Ducouso & Bordacs 2004, Eaton et al. 2016). In the Republic of Serbia, the area under the pedunculate oak covers 32,400 ha (Banković et al. 2009) located in the valleys of the Sava, Danube, and Mor-

ava rivers, while the best quality pedunculate oak forests are situated in the area Ravni Srem, Western Serbia (Radević et al. 2020).

Ectomycorrhizal (ECM) fungi have a great influence on the establishment, growth, and survival of trees in most temperate ecosystems because they provide trees with water and nutrients in return for carbohydrates (Smith & Read 2008). Forest trees of the same and different species are connected among themselves by a common mycelial network formed by ECM fungi which have an especially important role in forest regeneration, succession, and resistance against different stress factors (Selosse et al. 2006). Thus, mycorrhizas play an essential role in the stability of forest ecosystems which is especially impor-

tant under environmental stress (Milović et al. 2021a, Stojanović et al. 2021). Since stress tolerance and adaptation of ectomycorrhiza to different environmental conditions depend on the species of ECM fungus, knowledge about the structure of ECM fungal community can provide valuable information about the physiology of forest trees (Kraigher & Petkovšek 2011). The latest findings of Anthony et al. (2022) showed that tree growth in conifer and broadleaved forests across Europe was strongly correlated with the composition of the ECM fungal community.

Oaks are hosts of many ECM fungi. In the DEEMY database there are 63 descriptions of ectomycorrhizas on *Quercus* spp. (Agerer & Rambold 2022). Especially species-rich is the genus *Russula* containing 14 described ECM fungi, while the genus *Tuber* (truffles) contains nine ECM fungi, some of which being highly valuable as food (Katanović et al. 2017). Moreover, members of the genus *Quercus* sp. and particularly *Q. robur* are known to be among the best host plants for all the valuable European *Tuber* species (Hall et al. 2007).

Ectomycorrhizas on temperate oaks were analysed across European countries (Suz et al. 2014), in Ireland (O'Hanlon & Harrington 2012), south England (Barsoum et al. 2021), France (Courty et al. 2008), Central Germany (Schirkonyer et al. 2013), Austria (Kovacs et al. 2000), and Poland (Bzdyk et al.

□ University of Novi Sad, Institute of Lowland Forestry and Environment, Antona Cehova 13, 21000 Novi Sad (Serbia)

@ Marina Milović (katanicm@uns.ac.rs)

Received: Apr 11, 2023 - Accepted: Sep 20, 2023

Citation: Milović M, Kovačević B, Drekić M, Pilipović A, Pekeč S, Kesić L, Đilas M, Karaklić V, Galić Z (2023). Ectomycorrhizal diversity in a mature pedunculate oak stand near Morović, Serbia. *iForest* 16: 345-351. - doi: 10.3832/ifor4362-016 [online 2023-11-22]

Communicated by: Daniela Baldantoni

2019, Olchowik et al. 2019).

There is not much data about the diversity of ECM fungi on oaks in the Republic of Serbia. Initial studies were performed in sessile oak stands from Fruška Gora (Milović et al. 2021b) and in the young pedunculate oak stand near Morović (Milović et al. 2022). The aim of this study was to analyse the ECM fungal community in mature pedunculate oak stand near Morović, Serbia in two seasons spring and autumn.

Materials and methods

Sampling site and procedures

Sampling was conducted in 145-year-old pedunculate oak (*Quercus robur* L.) stand under shelterwood cutting procedure. The stand was situated in forest administration "Morović" under management of Public Enterprise "Vojvodinašume" (44° 58' 02.3" N, 19° 10' 56.2" E; elevation 86 m a.s.l.), where some of the best pedunculate oak forests of Republic of Serbia are located. Other woody species, present with a minor share, are *Acer campestre* L. and *Acer tataricum* L. According to meteorological records from the nearby station of Sremska Mitrovica over the period 1991-2020, the mean annual temperature in the area is 11.8 °C and the average annual rainfall is 617.1 mm. According to the average monthly sum of precipitation in this area, the months with the most and the least precipitations were June and February, respectively (http://www.hidmet.gov.rs/ciril/meteorologija/stanica_sr.php?moss_id=13266).

Physical and chemical properties were determined in the surface layer of the soil (upper 30 cm). The following soil characteristics were analyzed: particle-size distribution (%) by the international B-pipette method with preparation in sodium pyrophosphate; determination of soil textural classes based on particle-size distribution using Atteberg classification; CaCO₃ percentage (%) was measured volumetrically by using Scheibler's calcimeter; and pH in H₂O was determined with electrometric method using a combined electrode on Radiometer pH meter. Carbon and nitrogen

content were determined with CHN element analyzer (Vario® EL III, Elementar Analysensysteme, Germany), while the content of humus was measured by the method of Turin. All analyses were performed in the laboratory of Soil Science at the Institute of Lowland Forestry and Environment in Novi Sad applying the methodology described by Galić et al. (2015).

Soil sampling was performed on 29th May 2019 (spring) and 1st October 2019 (autumn) using a soil corer with a total volume of 274 ml and length of 18 cm. In both seasons, ten soil samples were taken at about 1 m from the target tree trunk. Soil samples were stored in a refrigerator at 4 °C for up to three months. Before analyses each sample was submerged overnight in tap water to loosen the soil structure. All fine roots were carefully washed from the soil and divided into vital ECM root tips, or old, nonturgescer, and nonmycorrhizal roots using a dissecting stereomicroscope Olympus SZX10® (Olympus Corp., Tokyo, Japan) with magnifications 10-63× (light source: Olympus Highlight 3100, daylight filter). Vital ECM root tips were categorized into different morphotypes of ectomycorrhizas based on their morphological and anatomical characteristics using a dissecting microscope and a microscope (Olympus BX53®) with magnifications 100-1000×.

Morphotypes of ectomycorrhizas were described following the methodology given by Agerer (1991) and Kraigher (1996). When it was possible, a fungal partner was determined by comparison of obtained descriptions with published descriptions in Agerer (2008) or Agerer & Rambold (2022).

Morphotypes of ectomycorrhizas were also classified into the exploration types as proposed by Agerer (2001). All categories of fine root tips were quantified by counting under the dissecting microscope.

Molecular identification of ectomycorrhizal fungi

Molecular identification of fungus from ECM root tip was based on PCR amplification of internal transcribed spacer (ITS) region of fungal nuclear rDNA. Genomic DNA was extracted from 2-5 ECM root tips of every ECM morphotype using a DNeasy® Plant Mini Kit (Qiagen, Hilden, Germany). Reactions of amplification were performed using ITS 1F (Gardes & Bruns 1993) and ITS 4 primer pair (White et al. 1990) in Eppendorf Master cycler (Eppendorf AG, Hamburg, Germany). The PCR mixture for each sample was composed of 2.5 µL of 10× Gold Buffer, 2 µL of deoxynucleotide triphosphates (0.2 mM each), 0.6 µL of each primer (10 µM each), 2 µL of MgCl₂ (2.0 mM), 15 µL of sterile distilled water, 0.3 µL of Taq polymerase (5 U µL⁻¹), and 2 µL of a DNA extract. Thermal cycling conditions were as follows: initial denaturation and polymerase activation at 95 °C for 5 min; 13 cycles at 94 °C for 45 s, 55 °C for 55 s and 72 °C for 45 s; 13 cycles at 94 °C for 45 s, 55 °C for 55 s and 72 °C for 120 s; 12 cycles at 94 °C

for 45 s, 55 °C for 55 s and 72 °C for 180 s and a final extension at 72 °C for 10 min. After purification using the QIAquick PCR® purification kit (Qiagen, Valencia, CA, USA) amplified DNA fragments were sent for sequencing to Macrogen Europe BV (Amsterdam, Netherlands). The ECM fungi were determined at the level of species, genus, or family by comparing the obtained sequences to those deposited in GenBank (NCBI 2021) and UNITE (Nilsson et al. 2018) database. The threshold value applied to differentiate the different OTUs based on ITS sequence similarity was 97%.

Data analysis

Diversity indexes were calculated per sample and per season (i.e., by pooling the ECM community data) following the formulas given by Atlas & Bartha (1981) and Taylor et al. (2000): (i) species richness index ($d = (S-1)/\log_{10}N$, where S is the number of ECM fungal taxa and N is the number of all mycorrhizal tips; (ii) Shannon-Weaver's diversity index ($H = C/N (N \log N - \sum n_i \log n_i)$, where $C=2.3$, N is the number of all mycorrhizal tips and n_i is the number of mycorrhizal tips of an individual ECM fungal taxon; (iii) Evenness ($e = H/\log S$, where H is the Shannon-Weaver's diversity index and S is the number of ECM fungal taxa; (iv) Equitability ($J = H/H_{max}$, where H is the Shannon-Weaver's diversity index and H_{max} is the theoretical maximum H assuming that each ECM fungal taxon was equally abundant; (v) Berger-Parker's evenness index ($BP = 1 - (N_{max}/N)$, where N_{max} is the number of mycorrhizal tips of the most frequent ECM fungal taxon and N is the number of all mycorrhizal tips).

Data from an individual soil sample was used as a statistical unit. Student's t-test and Mann-Whitney's U test were used to analyse seasonal differences for the measured parameters. t-test was used to test the significance of differences between spring and autumn in the number of ECM fungal taxa; vital ECM root tips; old, nonturgescer, and non-mycorrhizal roots; total number of fine root tips; percentage of vital root tips, and abundance of exploration types (ET). In order to fit the normal distribution, data were transformed as follows: count data were transformed by square root transformation (Bartlett 1936), while percentage values were transformed by arcsine transformation using the Bliss formula (Snedecor & Cochran 1976). The Mann-Whitney U test was used to test the significance of differences in diversity indexes. All statistical analyses were performed using the package STATISTICA® ver. 12 (StatSoft Inc., Tulsa, OK, USA).

Results

The chemical and physical characteristics of analyzed soil samples from the mature stand of pedunculate oak showed high content of total clay, slightly acidic pH (6.31) and concentration of carbon, nitrogen and humus of 2.26%, 0.126% and 3.12%,

Tab. 1 - Physico-chemical properties of the soil from the mature pedunculate oak (*Quercus petraea* L.) stand near Morović, NW Serbia.

Soil Property	Value
Total sand (%)	30.4
Total clay (%)	69.6
Texture class	Clayey-loam
pH in H ₂ O	6.31
CaCO ₃ (%)	1.26
Humus (%)	3.12
Carbon (%)	2.26
Nitrogen (%)	0.13
C/N	17.93

Tab. 2 - Comparison of total and average values (\pm standard error) of number of ectomycorrhizal fungal taxa, vital ectomycorrhizal root tips, old, non-turgescient and non-mycorrhizal roots, total fine roots, % of vital ectomycorrhizal roots and diversity indexes in the mature pedunculate oak (*Quercus petraea* L.) stand near Morović (NW Serbia) in spring and autumn. (a): p-values after Student's t-test; (b): p-values after the Mann-Whitney's U test.

Parameter	Spring		Autumn		p-value
	Total per site	Average per soil sample	Total per site	Average per soil sample	
Number of ectomycorrhizal fungal taxa	19	4.5 \pm 0.5	13	2.9 \pm 0.7	0.055 ^a
Number of vital ectomycorrhizal root tips	4002	400.2 \pm 197	2486	248.6 \pm 101	0.442 ^a
Number of old, nonturgescient and nonmycorrhizal root tips	27570	2757 \pm 896	17681	1768 \pm 408	0.402 ^a
Total number of fine roots	31572	3157.2 \pm 966	20167	2016.7 \pm 460	0.381 ^a
% of vital ectomycorrhizal root	13	13 \pm 4	12	11 \pm 3	0.565 ^a
Species richness index (<i>S</i>)	4.99	1.59 \pm 0.17	3.53	0.91 \pm 0.25	0.064 ^b
Shannon-Weaver index (<i>H</i>)	1.91	1.09 \pm 0.14	1.51	0.69 \pm 0.20	0.186 ^b
Evenness (<i>e</i>)	1.49	1.71 \pm 0.16	1.36	1.33 \pm 0.32	0.970 ^b
Equitability (<i>J</i>)	0.64	0.74 \pm 0.07	0.59	0.58 \pm 0.14	0.970 ^b
Berger-Parker index (<i>BP</i>)	0.47	0.40 \pm 0.07	0.38	0.32 \pm 0.09	0.345 ^b

respectively (Tab. 1). According to its granulometric content, soil can be classified in the texture class clay loam, while soil type is chernozem gleic. The obtained C/N ratio is favourable and leads toward nitrogen mineralization.

From 20 soil samples taken in the mature stand of pedunculate oak in two seasons, a total of 51,739 fine roots were analysed from which 6,488 represented vital ECM root tips.

Total values of measured root parameters and diversity indices had higher values in spring compared to autumn (Tab. 2). The most pronounced difference was recorded in the number of ECM fungal taxa. Average values of all analysed parameters were also higher in spring than in autumn, but differences were not statistically significant (Tab. 2). However, p-value of t-test for the number of ECM fungal taxa obtained in two seasons was close to 0.05, which could indicate a certain trend in the decrease of this parameter in autumn compared to spring. In both seasons oak trees had a very low share of vital ECM root tips.

Twenty-one ECM fungal taxa were recorded in the studied mature pedunculate oak stand in the two analysed seasons. Nineteen ECM fungal taxa were recorded in spring (14 Basidiomycota and five Ascomycota), while 13 ECM fungal taxa were observed in autumn (eight of Basidiomycota and five of Ascomycota). Thirteen ECM taxa were identified to the species level and eight to the genus level (Fig. 1). Eleven ECM fungi occurred in both seasons: *Cenococcum geophilum* Fr., *Cortinarius fuscogravescens* A. Favre, *Inocybe putilla* Bres., *Lactarius quietus* (Fr.) Fr., *Lactarius subumbonatus* Lindgr., *Scleroderma areolatum* Ehrenb., *Tuber foetidum* Vittad., *Humaria* sp., *Hydnotriza* sp., *Russula* sp., and *Tomentella* sp. Following ECM fungi were recorded only in spring: *Clavulina cristata* (Fr.) J.Schroet., *Pachyphloides nemoralis* Hobbart, Bona & Conde, *Russula insignis* Quéll.,

Russula laeta Jul. Schöff., *Clavulina alpina*, *Dermocybe* sp., *Russulamelitodes* and *Tomentella* sp. 1, while *Inocybe* sp. and *Tuber* sp. were observed exclusively in autumn (Fig. 1).

The most abundant ECM fungus in both seasons was *L. quietus* which made association with more than half of all ECM root

tips, while all other ECM fungal taxa were evidently less abundant. *R. laeta*, the second most abundant in spring was not found in autumn, while *L. subumbonatus* was the second most abundant ECM fungus in autumn. *C. geophilum* was the third most abundant fungal taxon in both seasons (Fig. 1). Family *Russulaceae* had the

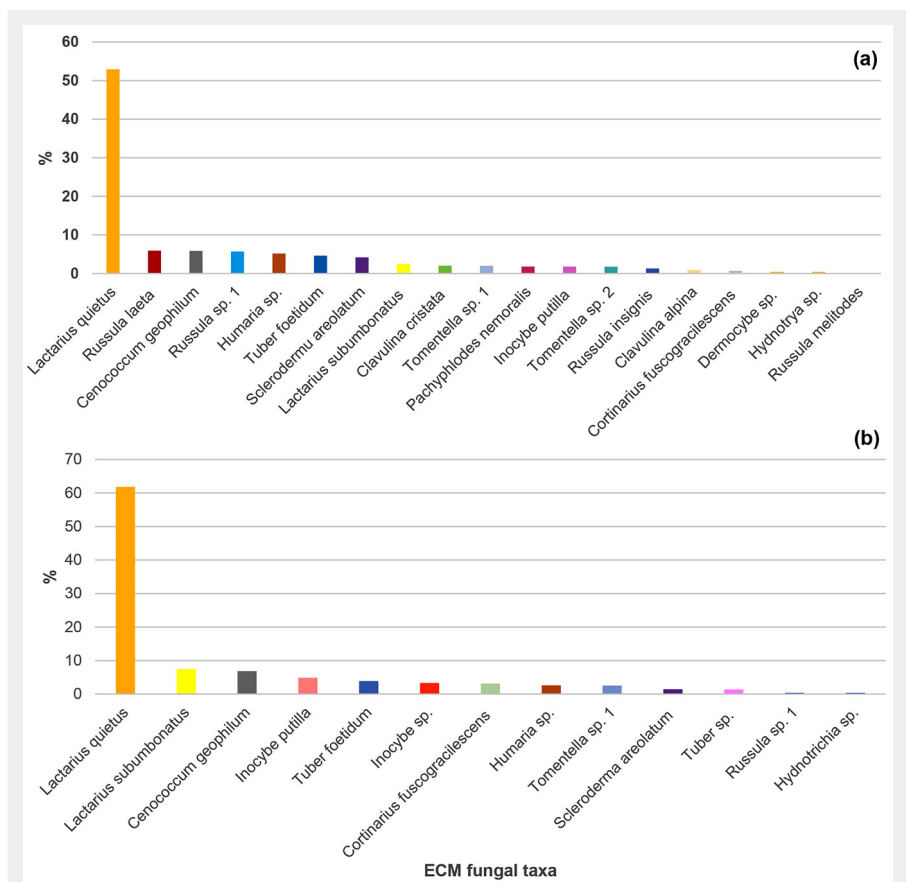


Fig. 1 - Relative abundance of ectomycorrhizal fungal taxa (based on the number of ectomycorrhizal root tips belonging to the particular ectomycorrhizal fungal taxon in relation to all ectomycorrhizal root tips) in a mature pedunculate oak stand near Morović (NW Serbia) in spring (a) and autumn (b).

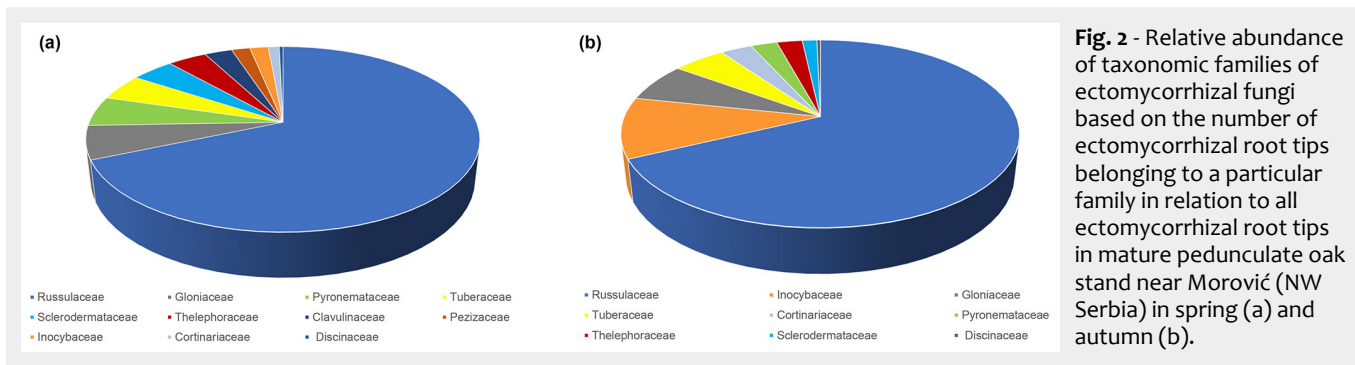


Fig. 2 - Relative abundance of taxonomic families of ectomycorrhizal fungi based on the number of ectomycorrhizal root tips belonging to a particular family in relation to all ectomycorrhizal root tips in mature pedunculate oak stand near Morović (NW Serbia) in spring (a) and autumn (b).

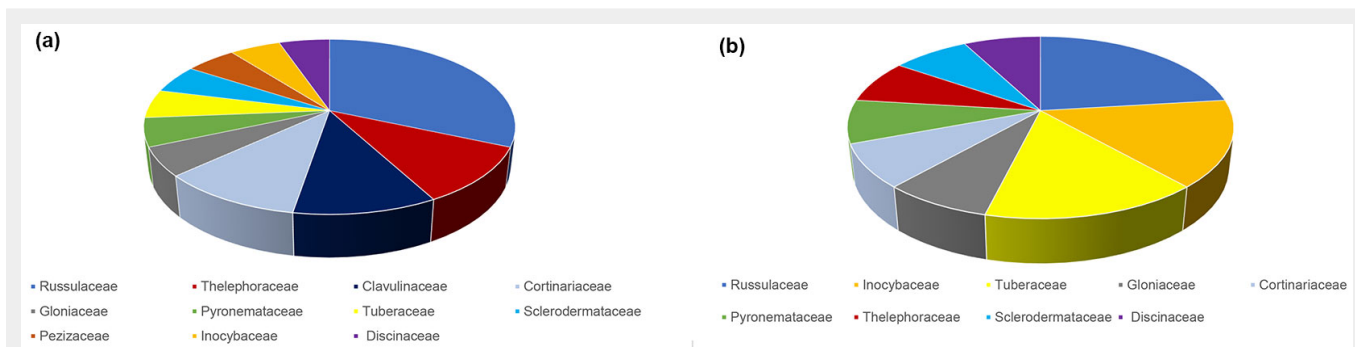


Fig. 3 - Species richness of taxonomic families of ectomycorrhizal fungi based on the number of ectomycorrhizal taxa belonging to a particular family in relation to all ectomycorrhizal taxa in mature pedunculate oak stand near Morović (NW Serbia) in spring (a) and autumn (b).

highest relative abundance and species richness in both analysed seasons (Fig. 2 and Fig. 3).

There was no difference in the number of ECM exploration types (ET) between spring and autumn. In both seasons, contact ET was dominant, which was associated with almost 70% of all vital ECM root tips, and followed by short distance ET. Contrastingly, medium- and long-distance ETs were scarce (Fig. 4).

Discussion

In a mature pedunculate oak stand from the site near Morović in spring and autumn, 19 and 13 ECM fungal taxa were recorded, respectively. In total, 21 ECM fungal taxa were observed and analysed in the pedunculate oak stand for two seasons. Our results are similar to the findings of

Milović et al. (2022) who recorded 18 ECM fungal taxa in summer in the young pedunculate oak stand from the same area. Similarly, 17 and 12 ECM taxa were determined in two sessile oak stands from Fruška Gora (Milović et al. 2021b). Furthermore, in three declining pedunculate oak stands in western Poland, the number of ECM fungal taxa ranged from 11 to 15 (Bzdyk et al. 2019). Similarly, in a 150-year-old pedunculate oak forest in north-eastern Poland, fungal species richness ranged from 12 to 14 taxa (Olchowik et al. 2019). On sessile oak from the Taurus mountains in Central Germany, 18 ECM fungal taxa were recorded (Schirkonyer et al. 2013), while on pedunculate and sessile oaks from Ireland, 21 ECM taxa were determined (O’Hanlon & Harrington 2012). However, across three pedunculate oak-dominated woodlands in southern

England, the average species richness was in the range of 17-45 (Barsoum et al. 2021). Furthermore, in oak plots across European countries, the average richness of ECM fungi during one season was 55, ranging from 24 fungal taxa in the Netherlands to 83 in Romania (Suz et al. 2014). A 15 month-study on temporal changes in the ECM community of a temperate oak forest in northeast France revealed 75 fungal taxa (Courty et al. 2008). A 3 year-investigation of the diversity of ECM morphotypes in pedunculate and sessile oaks in Austria, revealed 46 and 38 ECM morphotypes (Kovacs et al. 2000). The different number of ECM fungal taxa obtained in these studies could be explained by different age classes of oak stands and different sampling intensities (i.e., different numbers or/and size of samples and different number of examined seasons).

On average, 4.5 and 2.9 ECM fungal taxa were recorded in soil samples from the mature pedunculate oak stand in spring and autumn, respectively. This is slightly lower in comparison to the young pedunculate oak stand from the same locality, where six ECM fungal taxa were recorded per soil sample (Milović et al. 2022). The recorded values of fungal taxa per soil sample in this study are comparable to two sessile oak stands from Fruška Gora, where three ECM fungal taxa were found on average (Milović et al. 2021b). On the other hand, our results are considerably lower than those recorded on oaks in Austria (Kovacs et al. 2000) where on average nine morphotypes were found.

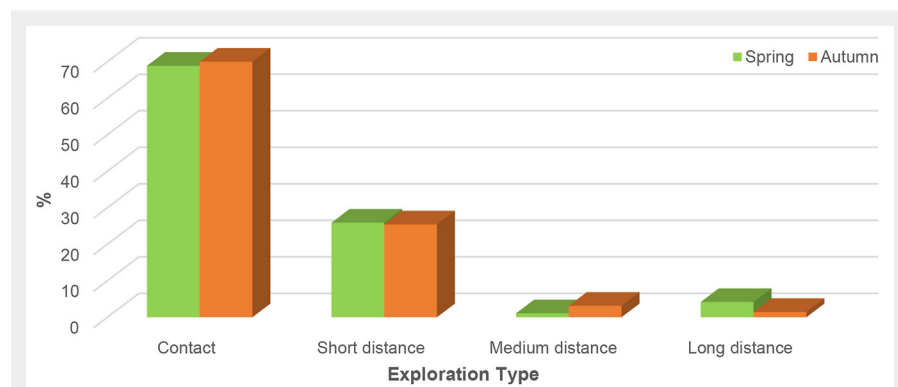


Fig. 4 - Relative abundance of ectomycorrhizal exploration types in mature pedunculate oak (*Quercus robur* L.) stand near Morović (NW Serbia) in spring and autumn.

oak trees with vital ECM fungi was very low (11-13%), lower than in young pedunculate oak stand at the same locality (19% – Milović et al. 2022) and in pedunculate oak trees from the old-growth forest in Poland (23-27% – Olchowik et al. 2019). A considerably low number of ECM fungal taxa recorded in the mature pedunculate oak stand near Morović (21) could be related to low levels of oak root colonization with vital ECM fungi.

Values of the Shannon-Weaver index obtained in soil samples from the mature pedunculate stand in spring and autumn (1.09 and 0.69) were considerably lower in comparison to young pedunculate oak stand from the same area near Morović (1.44 – Milović et al. 2022), to vital (1.2-1.3) and declining (1.3-1.5) sessile and pedunculate oak trees in Austria (Kovacs et al. 2000), and in a *Quercus ilex* stand 3 years after fire in Spain (1.1-1.4 – De Román & De Miguel 2005). However, the values of Shannon-Weaver index obtained in this study were comparable to those recorded in two pedunculate oak stands from Fruška Gora (0.69 and 0.87 – Milović et al. 2021b).

The number of ECM fungal taxa, number of vital ECM root tips, number of old, non-turgescient and nonmycorrhizal root tips, the total number of fine roots, % of vital ECM root tips, and diversity indices in mature pedunculate oak (*Quercus robur* L.) stand from site near Morović were higher in spring compared to autumn, which is in accordance to the findings of Milović et al. (2021c) in a mature poplar plantation. In the A1 soil horizon (0-5 cm) of a temperate oak forest in France, the maximum species richness of ECM fungi was recorded in September of the first year of the study, but in September of the next year, the same parameter had a minimum value (Courty et al. 2008). It might be assumed that factors affecting the richness of ECM fungi could vary from year to year. Furthermore, in Poland in temperate oak forest soil, Vorišková et al. (2014) found that the fungal community had been affected by season. The most important factors contributing to the observed variations were litter decomposition and allocation of photosynthate.

ECM communities of the examined mature oak stand near Morović consisted of one dominant and many rare fungal taxa. Many previous studies showed that ECM communities have few dominant and many rare fungal taxa (Suz et al. 2014, Milović et al. 2021b, 2022). ECM fungus *Lactarius quietus* dominated ECM fungal community in mature pedunculate oak stand in both seasons and made more than half of all vital ECM root tips. According to Courty et al. (2008) and Suz et al. (2014), *L. quietus* is an oak specialist present during all the year with fluctuating abundance. Although belonging to contact ET category, known by scarce extraradical mycelium, *L. quietus* can behave saprotrophically, using soil organic matter as substrate in the situation when C demand is high and photoassimi-

lates are not available (Courty et al. 2007). Also, this ECM fungus is found as an indicator species which represents ECM fungal community cluster associated with low-tree growth in broadleaf forests (European beech and mixed oak – Anthony et al. 2022). However, in the young pedunculate oak stand near Morović, where ECM fungi *Entoloma* sp., *Thelephoraceae* sp., *Russula* cf. *odorata*, *Russula lilacea* and *Tomentella* sp. 1 made associations with most ECM root tips, *L. quietus* was not observed (Milović et al. 2022).

The considerable difference in ECM fungal community between young and mature pedunculate oak stand near Morović could be explained by the effect of stand age. It is well known that tree age has a strong effect on the ECM community because older stands have different litter quality and quantity, as well as different dynamics of nutrients and water compared to younger trees (Kyaschenko et al. 2017). Accordingly, there is an ordered succession of early-stage fungi with late-stage fungi, and these two groups seemed to have different abilities to form mycorrhizas on roots growing in soils with accumulations of recalcitrant leaf litter (Last et al. 1987). *Lactarius quietus* is considered as a middle late-stage fungus (Keizer & Arnolds 1994) which could explain its absence from young oak stand.

In the mature pedunculate oak stand, the family *Russulaceae* had the highest relative abundance and species richness in both analysed seasons, which is consistent with the results of Barsoum et al. (2021) and Suz et al. (2014). In the temperate oak forests across Europe, nearly 45% of mycorrhizas belonged to the family *Russulaceae* (Suz et al. 2014) but in our study, almost 70% of all vital ECM roots belonged to this family.

Classification of ectomycorrhizas on ETs connects fungal morphological traits such as the amount and differentiation of extraradical mycelium, with their ecology (Agerer 2001). Each exploration type is defined by functional traits regarding its ability to store carbon (C) and take up and translocate nutrients (Hobbie & Agerer 2010).

There are two main ECM strategies for growth and nitrogen acquisition. One focuses on the uptake of labile nitrogen forms such as amino acids, ammonium, and nitrate, and the other focuses on insoluble, complex organic resources (Hobbie & Agerer 2010). Mycorrhizas with contact, short- and medium-distance smooth ETs use labile, mainly inorganic nitrogen (N). On the other hand, medium-distance fringe and mat, and long-distance ETs are rich in the extraradical mycelium and have medium and long-distance hydrophobic rhizomorphs. Due to hydrolytic exoenzymes, they have access to insoluble and nonlabile substances such as proteins, but they are more C demanding (Hobbie & Agerer 2010, Lilleskova et al. 2011).

Rosinger et al. (2018) investigated pat-

terns in ECM diversity, community composition, and ETs in beech, pine, and spruce forests across Europe and noted that contact and short-distance ETs had higher mean abundance compared to medium-distance and long-distance ETs. Contact and short-distance ETs of ECM fungi had mainly broad environmental ranges, they preferentially take up N in the forms of nitrate and ammonium and facilitate humus build-up which leads to high C sequestration in soils (Rosinger et al. 2018). Furthermore, Bzdyk et al. (2019) noted that the abundance of contact ET was positively correlated with soil organic matter (C:N ratio and organic carbon content), while the abundance of short-distance ET was closely related to calcium and phosphorus content and pH. According to Suz et al. (2014) in European forests N pollution and geography are the main factors that structured the abundance of ETs in soil. They found a positive response of contact ECM to N-related variables (throughfall N deposition, N in organic and mineral horizon, and soil solution nitrate).

In mature pedunculate oak stand, contact ET of ECM fungi dominated in both seasons, followed by short distance ET. Since the analysed stand was under shelterwood cutting procedure, canopy opening might provide favourable conditions for increased mineralization. Therefore, the soil at the investigated site contains a sufficient amount of labile inorganic nitrogen to be inhabited by ECM taxa belonging to contact and short-distance ETs, which are considered to be carbon cost-effective in an environment rich in inorganic nitrogen (Hobbie & Agerer 2010, Suz et al. 2014).

In the young pedunculate oak stand from the same locality, short-distance ET were dominant, followed by MD smooth-distance, and contact ET (Milović et al. 2022). Since the composition of ETs of ECM fungi from young and mature pedunculate oak stands are different, it can be assumed that the composition of ETs of the ECM fungal community changes by the tree age. This is in accordance with previous findings that older stands have a different composition of litter and different dynamics of nutrients compared to younger trees (Kyaschenko et al. 2017) which might favour different ETs.

Conclusions

This work presents the results of the first study on the ECM fungi diversity of a mature pedunculate oak stand in Serbia. During two seasons, 21 ECM fungal taxa were recorded, described, and identified mostly with molecular methods. Nineteen ECM taxa were observed in spring and thirteen in autumn. ECM communities consisted of one dominant taxon and a large number of rare taxa. The most abundant ECM fungus in both seasons was *Lactarius quietus* which made association with more than half of ECM root tips analyzed. At the study site, contact exploration type was dominant in both seasons, short-distance ET

was less abundant, while medium-distance fringe ET and long-distance ET were rare. The most pronounced difference between spring and autumn is observed in the total number of ECM fungal taxa. Number of ECM fungal taxa and diversity indices recorded in studied pedunculate oak stand were lower or similar compared to values obtained in stands of oak species across Europe.

Acknowledgements

The study was supported by the project 451-03-47/2023-01/200197 financed by the Ministry of Science, Technological Development, and Innovation of the Republic of Serbia. Edmund O. Bauer, USDA Forest Service, Northern Research Station, Institute of Applied Ecosystem Studies (USA) is gratefully acknowledged for revising the manuscript for English style and grammar.

References

- Agerer R (1991). Characterisation of ectomycorrhiza. Techniques for the study of mycorrhiza In: "Methods in Microbiology vol. 23" (Norris JR, Read DJ, Varma AK eds). Academic Press, London, UK, pp. 25-72.
- Agerer R (2001). Exploration types of ectomycorrhizae. A proposal to classify ECM mycelial systems according to their patterns of differentiation and putative ecological importance. Mycorrhiza 11 (2): 107-114. - doi: [10.1007/s00572010108](https://doi.org/10.1007/s00572010108)
- Agerer R (2008). Colour atlas of ectomycorrhizae (13th edn). Einhorn-Verlag, Schwäbisch Gmünd, Germany.
- Agerer R, Rambold G (2022). DEEMY - An information system for characterization and determination of ectomycorrhizae. München, Germany, web site. [online] URL: <http://www.deemy.de>
- Anthony MA, Crowther TW, Van Der Linde S, Suz LM, Bidartondo MI, Cox F, Schaub M, Rautio P, Ferretti M, Vesterdal L, De Vos B, Dettwiler M, Eickenscheidt N, Schmitz A, Meesenburg H, Andreea H, Jacob F, Dietrich HP, Waldner P, Gessler A, Frey B, Schramm O, Van Den Bulk P, Hensen A, Averill C (2022). Forest tree growth is linked to mycorrhizal fungal composition and function across Europe. The ISME Journal 16 (5): 1327-1336. - doi: [10.1038/s41396-021-01159-7](https://doi.org/10.1038/s41396-021-01159-7)
- Atlas R, Bartha R (1981). Introduction to microbiology. Addison-Wesley Publishing Company, Reading, UK, pp. 242-244.
- Banković S, Medarević M, Pantić D, Petrović N (2009). Nacionalna inventura šuma Republike Srbije - šumski fond Republike Srbije [National forest inventory of the Republic of Serbia - Forest growing stock of the Republic of Serbia]. Ministarstvo poljoprivrede šumarstva i vodoprivrede Republike Srbije - Uprava za šume, Beograd, Serbia. [in Serbian]
- Barsoum N, O'Hara SW, Cottrell JE, Forster J, San Jose Garcia M, Schonrogge K, Shaw L (2021). Root ectomycorrhizal status of oak trees symptomatic and asymptomatic for acute oak decline in southern Britain. Forest Ecology Management 482: 118800. - doi: [10.1016/j.foreco.2020.118800](https://doi.org/10.1016/j.foreco.2020.118800)
- Bartlett MS (1936). The square root transformation in analysis of variance. Journal of the Royal Statistical Society 3: 68-78. - doi: [10.2307/2983678](https://doi.org/10.2307/2983678)
- Bzdyk RM, Olchowik J, Studnicki M, Nowakowska JA, Oszako T, Urban A, Hilszczyńska D (2019). Ectomycorrhizal colonisation in declining oak stands on the Krotoszyn Plateau, Poland. Forests 10 (30): 1-21. - doi: [10.3390/f10010030](https://doi.org/10.3390/f10010030)
- Courty PE, Bréda N, Garbaye J (2007). Relation between oak tree phenology and the secretion of organic matter degrading enzymes by *Lactarius quietus* ectomycorrhizas before and during bud break. Soil Biology and Biochemistry 39 (7): 1655-1663. - doi: [10.1016/j.soilbio.2007.01.017](https://doi.org/10.1016/j.soilbio.2007.01.017)
- Courty PE, Franc A, Pierrat JC, Garbaye J (2008). Temporal changes in the ectomycorrhizal community in two soil horizons of a temperate oak forest. Applied and Environmental Microbiology 74 (18): 5792-5801.
- De Román M, De Miguel AM (2005). Post-fire, seasonal and annual dynamics of the ectomycorrhizal community in a *Quercus ilex* L. forest over a 3-year period. Mycorrhiza 15: 471-482. - doi: [10.1007/s00572-005-0353-6](https://doi.org/10.1007/s00572-005-0353-6)
- Ducouso A, Bordacs S (2004). EUFORGEN Technical Guidelines for genetic conservation and use for pedunculate and sessile oaks (*Quercus robur* and *Q. petraea*). International Plant Genetic Resources Institute, Rome, Italy, pp. 1-6. [online] URL: https://www.biodiversityinternational.org/fileadmin/user_upload/online_library/publications/pdfs/1038.pdf
- Eaton E, Caudullo G, Oliveira S, De Rigo D (2016). *Quercus robur* and *Quercus petraea* in Europe: distribution, habitat, usage and threats. In: "European Atlas of Forest Tree Species" (San-Miguel-Ayán J, De Rigo D, Caudullo G, Houston Durrant T, Mauri A eds). Publication Office EU, Luxembourg, pp. 160-163.
- Galić Z, Ponjarac R, Kiš A, Novčić Z (2015). Karakteristike zemljišta u GJ Ristovača [Soil types in management unite Ristovača] Topola/Poplar 195-196: 5-13. [in Serbian]
- Gardes M, Bruns TD (1993). ITS primers with enhanced specificity for basidiomycetes - application to the identification of mycorrhizae and rusts. Molecular Ecology 2: 113-118. - doi: [10.1111/j.1365-294X.1993.tb00005.x](https://doi.org/10.1111/j.1365-294X.1993.tb00005.x)
- Hall IR, Brown GT, Zambonelli A (2007). Taming the truffle. The history, lore, and science of the ultimate mushroom. Timber Press, Inc., Portland, OR, USA, pp. 304.
- Hobbie EA, Agerer R (2010). Nitrogen isotopes in ectomycorrhizal sporocarps correspond to belowground exploration types. Plant Soil 327: 71-83. - doi: [10.1007/s11104-009-0032-z](https://doi.org/10.1007/s11104-009-0032-z)
- Katanić M, Marković M, Pap P, Zlatković M, Pekeč S, Kovačević B (2017). Biologija i uzgoj tartufa u svetu i Srbiji [Biology and cultivation of truffles in the world and Serbia]. Topola/Poplar 199/200: 175-190. [In Serbian]
- Keizer PJ, Arnolds E (1994). Succession of ectomycorrhizal fungi in roadside verges planted with common oak (*Quercus robur* L.) in Drenthe, The Netherlands. Mycorrhiza 4: 147-159. - doi: [10.1007/BF00203533](https://doi.org/10.1007/BF00203533)
- Kesić L, Stojnić S, Orlović S, Pavlović L, Ložjanin R, Tepavac A, Vaštag E (2018). Varijabilnost morfoloških karaktera žira hrasta lužnjaka (*Quercus robur* L.), kitnjaka (*Q. petraea* (Matt.) Lieb.) i cera (*Q. cerris* L.) [Variability of the morphological characteristics of pedunculate (*Quercus robur* L.), sessile (*Q. petraea* (Matt.) Lieb.) and Turkey oak (*Q. cerris* L.) acorns]. Topola/Poplar 201/202: 187-201. [In Serbian]
- Kovacs G, Pausch M, Urban A (2000). Diversity of ectomycorrhizal morphotypes and oak decline. Phytion 40 (4): 109-116.
- Kraigher H (1996). Tipi mikorize: taksonomija, pomen, aplikacija [Types of ectomycorrhizae - their taxonomy, role, and application]. Zbornik Gozdarstva in Lesarstva 49: 33-66. [In Slovenian]
- Kraigher H, Petkovšek SA (2011). Mycobioindication of stress in forest ecosystems. In: "Diversity and Biotechnology of Ectomycorrhizae, vol. 25" (Rai M, Varma A eds), Soil Biology, Springer, Berlin, Heidelberg, Germany, pp. 301-322. - doi: [10.1007/978-3-642-15196-5_13](https://doi.org/10.1007/978-3-642-15196-5_13)
- Kyaschenko J, Clemmensen KE, Hagenbo A, Karlton E, Lindahl BD (2017). Shift in fungal communities and associated enzyme activities along an age gradient of managed *Pinus sylvestris* stands. The ISME Journal 11 (4): 863-874. - doi: [10.1038/ismej.2016.184](https://doi.org/10.1038/ismej.2016.184)
- Last FT, Dighton J, Mason PA (1987). Successions of sheathing mycorrhizal fungi. Trends in Ecology and Evolution 2: 157-161.
- Lilleskova EA, Hobbie EA, Horton TR (2011). Conservation of ectomycorrhizal fungi: exploring the linkages between functional and taxonomic responses to anthropogenic N deposition. Fungal Ecology 4: 174-183. - doi: [10.1016/j.funeco.2010.09.008](https://doi.org/10.1016/j.funeco.2010.09.008)
- Milović M, Kebert M, Orlović S (2021a). How mycorrhizas can help forests to cope with ongoing climate change? Sumarski List 145 (5-6): 279-286. - doi: [10.31298/SL.145.5-6.7](https://doi.org/10.31298/SL.145.5-6.7)
- Milović M, Vasić V, Drekić M, Kovačević B, Pekeč S, Galić Z, Orlović S (2021b). Diversity of ectomycorrhizal fungi associated with *Quercus petraea* in the national park Fruška Gora in the Republic of Serbia. Sumarski List 145(11-12): 547-555. - doi: [10.31298/SL.145.11-12.4](https://doi.org/10.31298/SL.145.11-12.4)
- Milović M, Orlović S, Grebenc T, Bajc M, Kovačević B, Kraigher H (2021c). Ectomycorrhizal fungal community in mature white poplar plantation. iForest 14: 540-547. - doi: [10.3832/ifor3827-014](https://doi.org/10.3832/ifor3827-014)
- Milović M, Kovačević B, Pekeč S, Pilipović A, Kesic L, Gavranović Markić A, Orlović S (2022). Diversity of ectomycorrhizal fungi in young pedunculate oak stand from Morović, Serbia. South-east European forestry 13 (1): 19-25. - doi: [10.15177/see-for.22-02](https://doi.org/10.15177/see-for.22-02)
- NCBI (2021). GenBank. National Center for Biotechnology Information - NCBI, Bethesda, ML, USA, web site. [online] URL: <http://www.ncbi.nlm.nih.gov/genbank/>
- Nilsson RH, Larsson K-H, Taylor AFS, Bengtsson-Palme J, Jeppesen TS, Schigel D, Kennedy P, Picard K, Glöckner FO, Tedersoo L, Saar I, Kõljalg U, Abarenkov K (2018). The UNITE database for molecular identification of fungi: handling dark taxa and parallel taxonomic classifications. Nucleic Acids Research 47: 259-26. - doi: [10.1093/nar/gky1022](https://doi.org/10.1093/nar/gky1022)
- O'Hanlon R, Harrington TJ (2012). Similar taxonomic richness but different communities of ectomycorrhizas in native forests and non-native plantation forests. Mycorrhiza 22 (5): 371-

382. - doi: [10.1007/s00572-011-0412-0](https://doi.org/10.1007/s00572-011-0412-0)
- Olchowik J, Hilszczanska D, Bzdyk RM, Studnicki M, Malewski T, Borowski Z (2019). Effect of deadwood on ectomycorrhizal colonisation of old-growth oak forests. *Forests* 10 (6): 480. - doi: [10.3390/f10060480](https://doi.org/10.3390/f10060480)
- Radević V, Pap P, Vasić V (2020). Gazdovanje šumama hrasta lužnjaka u Ravnom Sremu: juče, danas, sutra [Management of the common oak forests in Ravni Srem: yesterday, today, tomorrow]. *Topola/Poplar* 206: 41-52 [In Serbian]
- Rosinger C, Sandén H, Matthews B, Mayer M, Godbold DL (2018). Patterns in ectomycorrhizal diversity, community composition, and exploration types in European beech, pine, and spruce forests. *Forests* 9 (8): 445. - doi: [10.3390/f9080445](https://doi.org/10.3390/f9080445)
- RSHS (2020). Home page. Hydrometeorological Service - RSHS, Beograd, Republic of Serbia, web site. [online] URL: http://www.hidmet.gov.rs/eng/meteorologija/stanica_sr.php?moss_id=13168
- Schirkonyer U, Bauer C, Rothe G (2013). Ectomycorrhizal diversity at five different tree species in forests of the Taunus Mountains in Central Germany. *Open Journal of Ecology* 3 (1): 66-81. - doi: [10.4236/oje.2013.31009](https://doi.org/10.4236/oje.2013.31009)
- Selosse MA, Richard F, He X, Simard SW (2006). Mycorrhizal networks: les liaisons dangereuses? *Trends in Ecology and Evolution* 21 (11): 621-628. - doi: [10.1016/j.tree.2006.07.003](https://doi.org/10.1016/j.tree.2006.07.003)
- Smith SE, Read DJ (2008). *Mycorrhizal symbiosis* (3rd edn). Elsevier Academic Press, London, UK, pp. 787.
- Snedecor W, Cochran WG (1976). *Statistical methods*. Iowa State University Press, IA, USA, pp. 524.
- Stojanović DB, Orlović S, Zlatković M, Kostić S, Vasić V, Miletić B, Kesić L, Matović B, Boanić D, Pavlović L, Milović M, Pekeč S (2021). Climate change within Serbian forests: current state and future perspectives. *Topola/Poplar* 208: 39-56.
- Suz LM, Barsoum N, Benham S, Dietrich HP, Fetzner KD, Fischer R, García P, Gehrman J, Kristöfel F, Manninger M, Neagu S, Nicolas M, Oldenburger J, Raspe S, Sánchez G, Schröck HW, Schubert A, Verheyen K, Verstraeten A, Bidartondo MI (2014). Environmental drivers of ectomycorrhizal communities in Europe's temperate oak forests. *Molecular Ecology* 23 (22): 5628-5644. - doi: [10.1111/mec.12947](https://doi.org/10.1111/mec.12947)
- Taylor AFS, Martin F, Read DJ (2000). Fungal diversity in ectomycorrhizal communities of Norway spruce (*Picea abies* (L.) Karst.) and beech (*Fagus sylvatica* L.) along north-south transects in Europe. In: "Carbon and Nitrogen Cycling in European Forest Ecosystems" (Schulze ED ed). *Ecological Studies* 142, Springer-Verlag, Berlin Heidelberg, Germany, pp. 343-365.
- Voríšková J, Brabcová V, Cajthaml T, Baldrian P (2014). Seasonal dynamics of fungal communities in a temperate oak forest soil. *New Phytologist* 201 (1): 269-278. - doi: [10.1111/nph.12481](https://doi.org/10.1111/nph.12481)
- White TJ, Bruns T, Lee S, Taylor J (1990). Amplification and direct sequencing of fungal ribosomal RNA genes for phylogenetics. In: "PCR Protocols. A Guide to Methods and Applications" (Innis MA, Gelfand DH, Sninsky JJ, White TJ eds). Academic Press, San Diego, CA, USA, pp. 315-322. - doi: [10.1016/B978-0-12-372180-8.50042-1](https://doi.org/10.1016/B978-0-12-372180-8.50042-1)

Supplementary Material

Tab. S1 - Ectomycorrhizal fungi recorded in mature pedunculate oak stand near Morović in spring and autumn, identified based on morpho-anatomical characteristics and molecular methods and their absolute and relative (%) abundance per season.

Tab. S2 - Average number of ectomycorrhizal exploration types per soil sample in the mature stand of pedunculate oak (*Quercus robur* L.) near Morović and significance of Student's *t*-test for the effect of season.

Link: Milovic_4362@suppl001.pdf