

Big data and evaluation of cultural ecosystem services: an analysis based on geotagged photographs from social media in Tuscan forest (Italy)

Iacopo Bernetti,
Gherardo Chirici,
Sandro Sacchelli

The paper presents a methodology to quantify the suitability of forest stands for the potential delivery of cultural ecosystem services (CES). The quantification of CES represents a complicated task in the framework of ecosystem service valuation. Compared to traditional investigations, focusing on the study of the aesthetic appreciation of a particular territory, the use of geotagged photographs seems to be a promising alternative to appraise CES. Thus, in order to analyse CES with a particular focus on the aesthetic appreciation of forest stands, this study exploits big data through the analysis of photos shared on the Flickr social network. Crowdsourced datasets are used to depict the geographic location and density of pictures – expressed as the number of photos per unit of surface – as well as their relationship to forest variables and logistic characteristics. The implemented geostatistical model is used to spatialise the results at the regional level (Tuscany forests, Italy). Among the outputs, high values of CES are stressed for high forest and protected areas. From a forest species viewpoint, silver fir, coastal Mediterranean pine, beech and mixed forests seem to be more appreciated compared to other stand typologies such as oaks (e.g., pubescent or Turkey oak) and thermophilic broad-leaved species. Additional quantitative parameters (e.g., elevation, biomass stock and distance to main roads) were significant to the CES assessment. The potential applications of the technique to support forest planning and management are discussed.

Keywords: Forest Aesthetic Value, Social Network, Maximum Entropy Models, Tag-cloud, Geographic Information Systems

Introduction

The Millennium Ecosystem Assessment (MEA 2005) defines cultural ecosystem services (CES) as “the non-material benefits that people obtain from ecosystems through spiritual enrichment, cognitive development, reflection, recreation and aesthetic experiences”. The review conducted by Milcu et al. (2013) has shown that most of the research on CES has been focused on recreation, ecotourism and the aesthetic value of landscapes due to their strong economic importance (Hernández-Morcillo et al. 2013, Milcu et al. 2013). Travel and tourism directly accounted for 3.1% of the global gross domestic product (GDP) in

2016 and is forecast to rise by 4.0% in the 2017-2027 period. Growth will mostly come from nature-based tourism (Balmford et al. 2009); thus, the potential economic value is high and may have considerable potential to generate funds for conservation and people engaging with the environment. The World Tourism Organization estimates that ecotourism represents 2-4% of the entire world tourism market and has an annual growth potential of approximately 20%.

Monetisation can be a path for planning rural-related projects and the quantification of CES (Nesbitt et al. 2017). However, among other categories of ecosystem ser-

vices (ES), i.e., provisioning, supporting and regulating services, the quantification of the economic value of CES is a tricky issue. This is mainly due to its scarce tangibility and to the influence of subjective issues in valuation (Rabe et al. 2018). Moreover, the difficulty of spatialising monetary values with proper detail (resolution) is highlighted in the literature (Carvalho-Ribeiro et al. 2016). To cope with these challenges, a series of alternative methods, compared to those used in economic analysis, have been applied to quantify CES (Fontana et al. 2013, Nahuelhual et al. 2013, Brown & Fagerholm 2015, Saarikoski et al. 2016, Rovai et al. 2016, Pastorella et al. 2017, Dunford et al. 2018). Allowing for the subjective evaluation of participative processes, the above research represents a milestone for CES analysis.

Some advances have been recently introduced by the application of big data, and specifically by social media analysis (Langemeyer et al. 2018, Oteros-Rozas et al. 2018). Focusing on the study of the aesthetic appreciation of a particular rural area or landscape, compared to traditional investigation, the use of geotagged photographs seems to be a promising alternative to appraising CES. In the last decades, the evaluation of ES through web-based pho-

□ Department of Agricultural, Food, Environment and Forestry, University of Florence, p.le delle Cascine 18, v. S. Bonaventura 13, Firenze (Italy)

@ Sandro Sacchelli (sandro.sacchelli@unifi.it)

Received: Apr 19, 2018 - Accepted: Nov 22, 2018

Citation: Bernetti I, Chirici G, Sacchelli S (2019). Big data and evaluation of cultural ecosystem services: an analysis based on geotagged photographs from social media in Tuscan forest (Italy). *iForest* 12: 98-105. - doi: [10.3832/ifor2821-011](https://doi.org/10.3832/ifor2821-011) [online 2019-02-11]

Communicated by: Susanna Nocentini

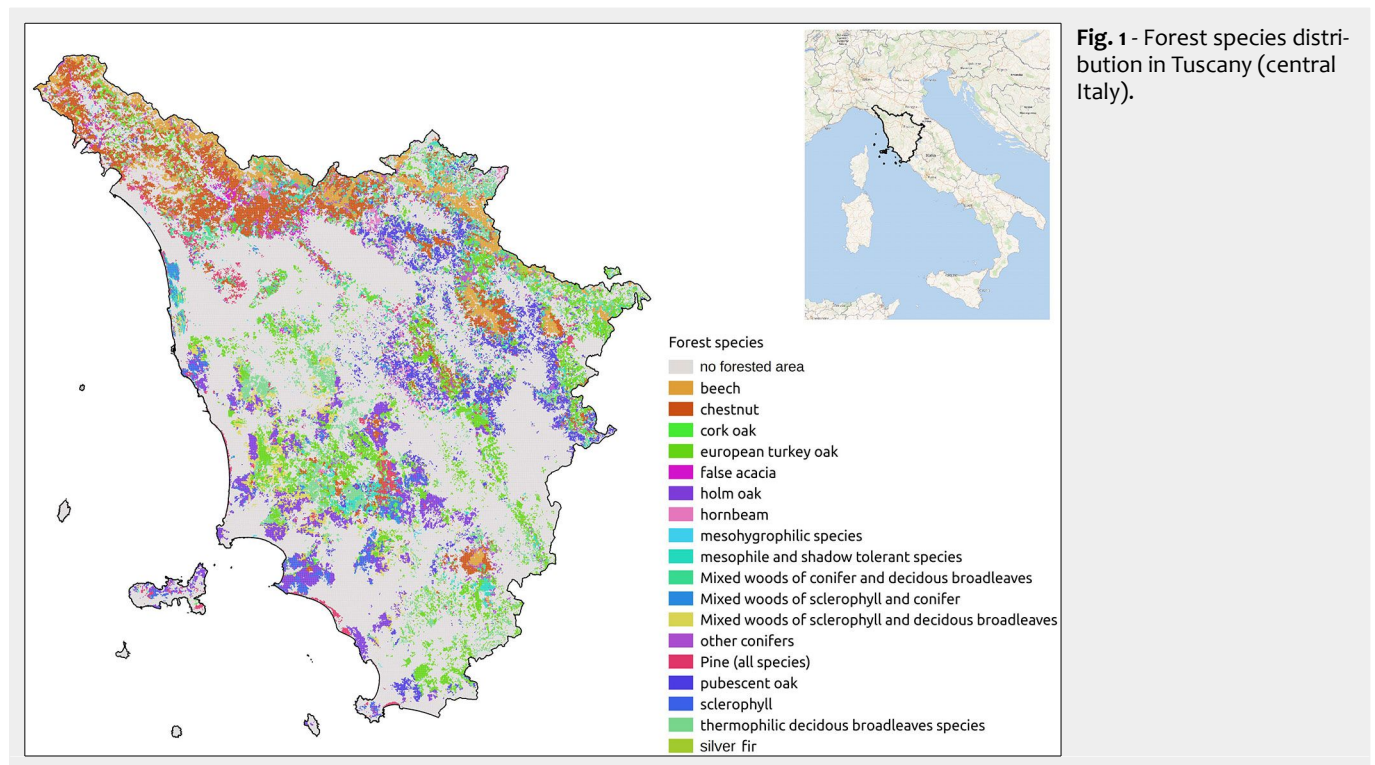


Fig. 1 - Forest species distribution in Tuscany (central Italy).

tographs has developed as a method for the analysis of rural landscapes and natural areas. The volume and spatial distribution of geotagged photographs uploaded to global online social media platforms (Instagram™, Panoramio™ or Flickr™), can be a useful source of data for mapping the distribution of CES (Cao & O'Halloran 2015, Hollenstein & Purves 2010, Li et al. 2013, Sun et al. 2013). The main advantages of using geotagged photographs as a proxy for people's preferences are (i) using the observed preferences (Hollenstein & Purves 2010) and (ii) obtaining precise information on the actual provision of the service provided by the exact position in which the photos are taken (Bagstad et al. 2014). Levin et al. (2017) found "strong and significant correlations between all crowd-sourced data and visitation statistics, demonstrating the potential of using crowd-sourced data to characterize the social and perceived importance of protected areas as a proxy for visitation statistics".

Yoshimura & Hiura (2017) and Walden-Schreiner et al. (2018) have analysed the relationships between the shooting locations of georeferenced photos on Flickr™ with both the environmental characteristics of the territory and the presence of infrastructure. The aim of the authors was to deliver management strategies for the conservation of natural resources, while providing opportunities for tourism and recreation.

From a land use point of view, several studies have focused on mountainous areas to depict both landscape characteristics relevant for aesthetic appreciation (Tenerelli et al. 2016) and the drivers used to map outdoor recreation supply, demand, and flow (Schirpke et al. 2018). Urban

green spaces have been investigated with a focus on general (e.g., managed and spontaneous vegetation, including public parks, gardens as well as nature reserves – Richards & Tunçer 2017) or specific land use typologies (mangrove urban forest – Richards & Friess 2015).

According to the authors' knowledge, there is a lack of specific studies dealing with the assessment of CES in forest stands using big data from social media, with a specific focus on aesthetic appreciation. In this context, a methodological approach to quantifying the aesthetic value of the forest environment and its spatial associations with the features of forest stands on a regional scale, is proposed. Specifically, the objectives of the work are: (i) to create a spatial model to evaluate the provision of aesthetic value in forests; and (ii) to identify which biophysical and infrastructural variables better explain the spatial distribution of this CES. The results can represent a preliminary step to guide policy- and decision-makers in planning as well as the management of forests to optimize the delivery of CES.

Methods

Study area

The CES provision has been set at regional level (Tuscany region, central Italy) because operational actions regarding the Common Agricultural Policy in Italy are delegated to the regions (NUTS-2 subdivision, according to Eurostat classification). This administrative level could favour the depiction and addressing of the EU funds available for particular agroforestry interventions. The forested area of Tuscany is 1,086,000 hectares, equal to 47% of the re-

gional territory. The stand area is mainly composed by deciduous oak (primarily Turkey oak and downy oak with 414,000 ha), followed by forests with a prevalence of chestnut (177,000 hectares). The mountainous territory is characterized by beech (76,000 ha), firs (14,000 ha) and black pine (21,000 ha). In the coastal areas, there are widespread holm oak, Mediterranean scrub and Mediterranean pines (e.g., Italian umbrella pine and Maritime pine). From a silvicultural point of view, compared to the high forest (34%), there is a clear prevalence of coppice (66%), which is more concentrated in the mountainous forests, especially in the beech and oak stands (our elaboration on Tuscany region data - <http://www.regione.toscana.it/-/geoscopio>). Fig. 1 shows the distribution of forest species in the study region.

Geotagged photo acquisition

Recently, there has been a rapid increase in the available data sources regarding voluntary geographical information. Social media applications such as Twitter™, Flickr™ and Facebook™ provide a collection of geographical information that can be queried via public application programming interfaces (APIs). In addition, a growing willingness of people to actively contribute in sharing their experiences of living in urban, rural and natural spaces is being witnessed. This phenomenon is known by the generic term "people as sensors" (Kirilenko et al. 2015).

In this study, the most used platform to share photographic images, Flickr™, is used. Flickr™ has been involved in several scientific research studies focused on data sources in GIScience, geography, and tourism. The platform offers an accessible

API and has experienced continuous growth (Alivand & Hochmair 2017). Previous studies (Levin et al. 2017) have shown how Flickr™ provides a source of information that is free, updated, and with good spatial as well as temporal resolution. The potential analysis of the tags' contents is a further strength of the platform.

According to Nov et al. (2010), the photographic data uploaded on Flickr™ imply an individual process that can be divided into two main phases: (i) the technical-creative phase of taking the photo; (ii) the social phase of sharing this photo integrated with an association of comment/s on it.

The action of taking a picture is not only linked to the characteristics of the surrounding environment; it also involves other aspects of interpretative cognition that people apply to that space (personal preferences, memories, opinions, etc. – Dakin 2003, Scott & Canter 1997). Both the act of taking a picture in a specific place and the action of choosing which photo to share reflect the quality perceived by the individual about that place.

Geotagged photos were queried from the Flickr™ API using the statistical software R (version 3.2.5). The downloaded attributes of geotagged photo include latitude, longitude, owner, acquisition date, text tag, accuracy evaluation, and image URL. Pictures taken during the period from 01/01/2010 to 31/12/2017 were downloaded for a total of over 1.6 million photos in Tuscany (Where On Earth Identifier – WOEID = 7153345), mainly in the city of Florence. A dataset containing the georeferenced photo points loaded during this period was created by means of an overlay with a forest map. The dataset contains 65,418 georeferenced

photos. The positional accuracy was set at street level (provided level of positional accuracy from Flickr™ ≥ 12 – Flickr 2018). The records were analysed in R and converted into a shapefile for geospatial analysis using the QGIS software. The pictures containing tags relevant to forest depiction (e.g., wood, forest, tree and other synonyms and related words) were filtered using a QGIS query whose extended expression is provided in the Supplemental material. This step is needed to select the photos inside the forest that focus on wood-related elements. Eventually, specific filters were applied to avoid distortions due to photos being repeated many times in a single location by a single photographer. The final dataset contained 7,986 photographic points. To verify the correctness of the final database, a frequency analysis of the words contained in the tags was carried out.

Variable data sources

Explanatory variables are used to understand which characteristics of the forest influence an individual's decision to take a picture and publish it on Flickr™. The variables used are the distance from main roads to forest paths, the distance to the coast line, the geomorphological characteristics (altitude and slope), the forestry parameters (forest species and regeneration, i.e., management system, fertility class and biomass stock), and the level of environmental protection (national parks, regional parks, reserves and other protected areas). The distance to the main roads was chosen because roads are the main access infrastructure to the forest. Furthermore, this factor is a component of

management plans and represents the ways in which agencies provide services to visitors and mitigate impacts. The coast in Tuscany denotes the non-urban localization of greater tourist pressure. The forests close to it (mainly with a prevalence of Italian umbrella pine) are particularly vulnerable to tourist overload. In the study area, the altitude and the slope are strongly correlated to the climate (rainfall and temperature) and influence the use of the forest. The forestry variables were chosen based on the literature on recreation in forests (Diktas 2017, Komossa et al. 2018). None of these variables had a significant correlation to each other (all $r < 0.4$), thus excluding the risk of multicollinearity. All the independent variables were original or were re-sampled at a resolution of 1 ha (cell size 100 m). The list of variables and their sources are shown in Tab. 1.

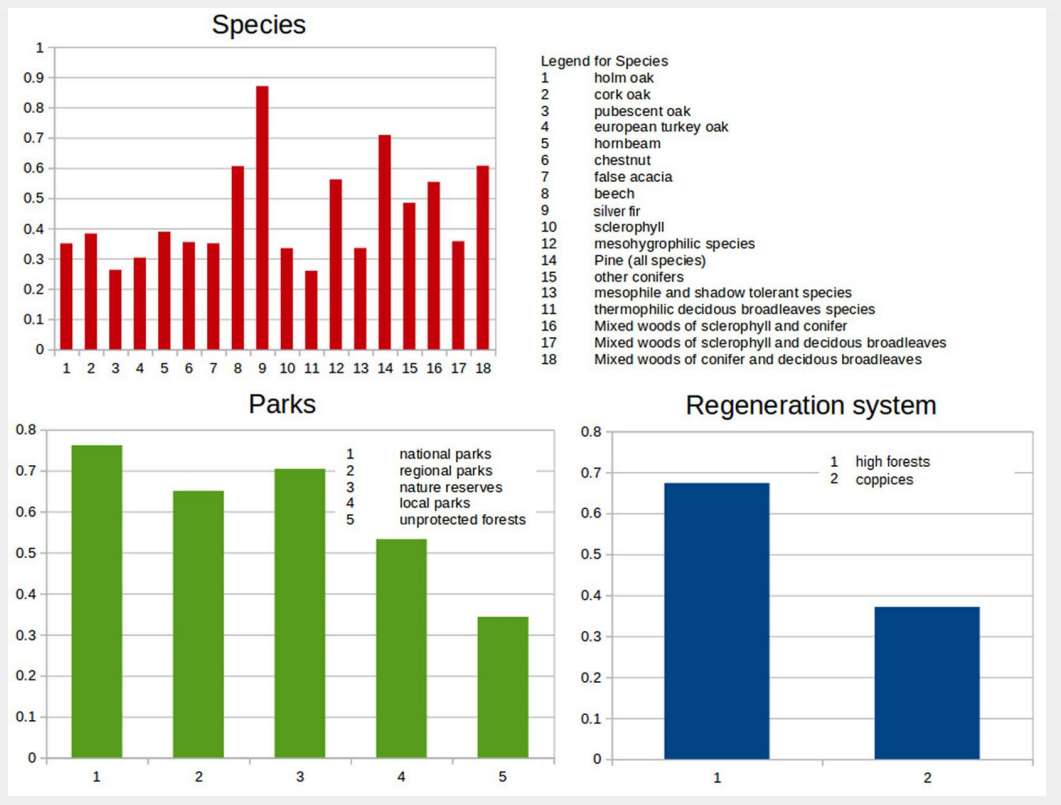
Statistical model

The purpose of the statistical analysis was to create a map of the probability that an individual takes a photo of a forest and shares it on the Flickr™ platform. This map can be considered as a proxy for the value of CES (Schirpke et al. 2016). Maximum entropy models (MaxEnt) have been applied with success in managing visitor impacts on natural resources including human-nature interactions (Braunisch et al. 2011) and off-road recreational behaviour prediction (Coppes & Braunisch 2013, Westcott & Andrew 2015). MaxEnt has only recently been applied to the estimation of CES through correlations between the locations of Flickr photos with the environmental characteristics of the territory (Yoshimura & Hiura 2017, Walden-Schreiner et al. 2018). The

Tab. 1 - Description of the geographical dataset used in the analysis.

Dataset	Source
Forest species map. Categories: (1) holm oak; (2) cork oak; (3) pubescent oak; (4) european turkey oak; (5) hornbeam; (6) chestnut; (7) false acacia; (8) beech; (9) silver fir; (10) sclerophyll; (11) thermophilic deciduous broadleaves species; (12) mesohygrophilic species; (13) mesophile and shadow tolerant species; (14) Pine (all species); (15) other conifers; (16) Mixed woods of sclerophyll and conifer; (17) Mixed woods of sclerophyll and deciduous broadleaves; (18) Mixed woods of conifer and deciduous broadleaves.	Tuscany Region – http://www.regione.toscana.it/-/geoscopio
Regeneration system map. Categories: (1) high forest; (2) coppice.	Tuscany Region – http://www.regione.toscana.it/-/geoscopio
Protected areas map. Categories: (1) national parks; (2) regional parks; (3) nature reserves; (4) local parks; (5) unprotected forests.	Tuscany Region – http://www.regione.toscana.it/-/geoscopio
Digital Terrain Model (DTM)	Tuscany Region – http://www.regione.toscana.it/-/geoscopio
Slope	DTM processing using QGIS software
Road map	Tuscany Region – http://www.regione.toscana.it/-/geoscopio
Map of distance from road	Elaboration of the road map via QGIS software
Coastline map	National Geoportal, Ministry of Environment – http://www.pcn.minambiente.it/mattm/
Map of distance from coastline	Elaboration of the coastline map via QGIS software
Soil fertility map. Categories: Ordinal classes progressively increasing from 1 (high fertility) to 7 (low fertility).	Tuscany Region – http://www.regione.toscana.it/-/geoscopio
Biomass stock map	Geolab laboratory, University of Florence

Fig. 5 - Marginal response curves for the qualitative variables.

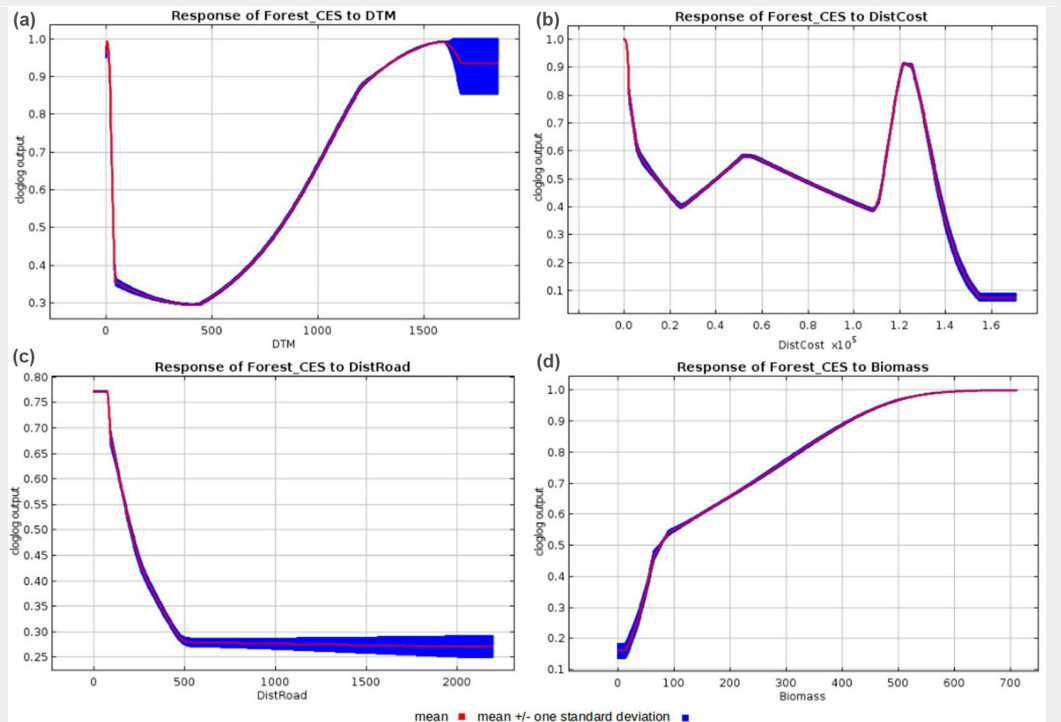


coastal areas, in the mountains of the Apennines and in the south-eastern area of the region (Monte Amiata). The MaxEnt model predicts an AUC of 0.792 (Fig. 4), stressing a good discrimination. The response curves (Fig. 5) show that visitors prefer forests with a prevalence of silver fir, pine, beech or mixed forests of conifers and broadleaved trees. The species that are less preferred by the visitors are the forest of pubescent and Turkey oak as well

as the thermophilic broad-leaved woods. The contribution to the probability is rather differentiated, with a maximum of 0.87 for the silver fir and a minimum of 0.26 for the thermophilic forest. From a management perspective, the high forests are strongly preferred to coppices (the contribution to the probability is 0.67 and 0.31, respectively). The level of protection is significant for CES quantification: the presence of natural protected areas highlights a relevant

difference (contribution to the probability is 0.76) compared to forests without protection (contribution to the probability is 0.34). The response curves of the quantitative variables (Fig. 6) indicate how the distance from the roads to forest paths has a decreasing trend, with a very low probability of visitor presence for distances over 500 metres. Instead, the altitude and the distance to the coast are bimodal, with a high probability at sea level and in moun-

Fig. 6 - Marginal response curves for the quantitative variables. (a) Elevation (DTM, in m a.s.l.); (b) distance to coast (DistCost, m); (c) distance to roads (DistRoad, m); (d) biomass stock (Biomass, m³).



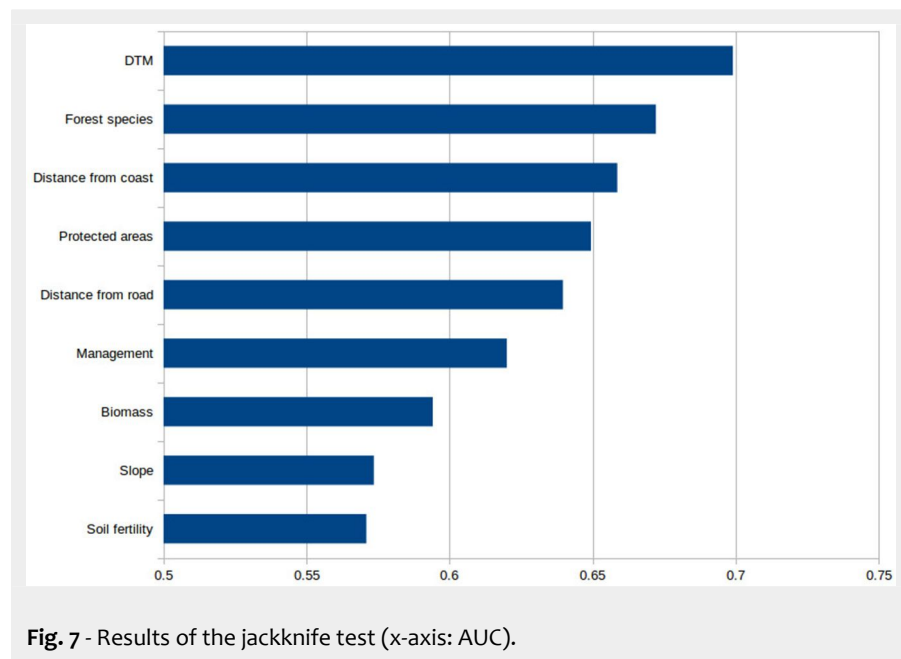


Fig. 7 - Results of the jackknife test (x-axis: AUC).

tain areas, and low probability for intermediate elevations. The results of the jackknife test (Fig. 7) stress that the environmental variable with the maximum gain when used in isolation is the elevation (DTM), followed by forest species and distance to the coast. The results obtained confirm previous studies performed at various scales. In particular, see Grêt-Regamey et al. (2015) for a review of the extensive existing literature on the effect of distance from roads and routes on the supply of CES, and Paracchini et al. (2014) for the relationship between CES supply and distance from the coastline.

Discussion

The literature stresses how dendrometric and management characteristics are of strong importance in the aesthetic appreciation of forests (Ribe 2009, Lupp et al. 2013). This assertion seems to be confirmed by the above results; for example, high forests have a greater appreciation compared to coppices, probably due to the larger diameters of single trees. Diameter is of twofold importance: bigger trees are directly related to the perceived good aesthetic value (Ribe 2009); moreover, larger diameters are indirectly related to stand density. As reported in the literature (Tahvanainen et al. 2001), lower density can favour scenic beauty. In fact, due to the major relevance of open areas, lower density makes the forest more beautiful and suitable for recreation.

Coastal areas highlight relevant CES values associated with Mediterranean pine forests (mainly with a prevalence of Italian umbrella pine). This territory is also associated with higher inhabitant-density as well as touristic areas. Thus, in future works, an investigation into the relative importance of forest stands compared to these variables would be worthwhile. In addition, the closer a managed stand is to the coast,

the more rest areas tourists can find. Under a modelling point of view, this information could bias the picture taken in other areas of the case study (e.g., hilly areas of central Tuscany and mountainous areas of the Apennines, more distant from the coast). However, the bimodal trend of the response curve related to the distance to the coast (Fig. 6) and the significance of this parameter in the jackknife test (Fig. 7), highlight the significance of the variable and the absence of distortion.

The distance to the main roads is significant for photo taking, with an indirect proportion stressing the importance to this activity of facilities being near forest characteristics. This aspect could be relevant for different reasons. Hernández-Morcillo et al. (2013) reported how a CES value should be directly correlated with the number of scenic roads in a natural area. Schirpke et al. (2013) highlighted how viewpoints and forest clearings along roads or hiking trails are important to allow long vistas and to improve CES provision. Differences in the perception of roads could also emerge according to socio-demographic characteristics: for example, Schirpke et al. (2016) affirmed that local people assign significantly higher values to open views (subalpine and alpine landscapes in the case study), whereas tourists value the presence of a forest road more positively. Although some authors (Eggers et al. 2018, Komossa et al. 2018) revealed how major roads can be a cause of CES depletion due to noise pollution, the results do not evidence this assertion, probably due to the local characteristics of roads close to forests.

An interesting output is linked with biomass stock. The response curve follows a quasi-sigmoidal trend, which is similar to the growing stock function in stands. This aspect seems to be confirmed by the trend of aesthetic value, which shows a maximisation from young to mature stands (Sac-

chelli 2018). The outputs report a low significance of slope and fertility variables.

As confirmed by the AUC values, the results are significant from a statistical viewpoint.

The above considerations could be of great importance to depict the guidelines for forest planning and management. If the valorisation of CES is a priority, the maintenance of even-aged high forests or a conversion from coppice to high forest management should be a valid option for analysis. In the case of creating photography hunting paths, particular attention could be paid to the establishment of openness in the proximity of main roads as well as forest tracks. In general, at regional level, silvicultural practices take place only if there is an economic advantage (positive stumpage value from final harvesting or thinning – Fratini 2005). These typologies of intervention are mainly focused on provisioning services and the extraction of timber and firewood. Specific silvicultural treatments for the valorisation of CES focused on aesthetic improvement are not frequent in the study area. The negative stumpage values limit the interventions in public forests to the maintenance of safety standards for visitors. Scientific evidence for the relationship between forest management and the improvement of CES could promote suitable silvicultural practices for aesthetic enhancement. For example, Tahvanainen et al. (2001) revealed how small clear cutting had a positive effect on scenic beauty, depending on different variables such as the size of the gap, its adaptability to the landscape and the amount of logging residues left in the cutting area. Additional, future evaluations related to forest management should focus on the differences between photos concerning internal forest characteristics and scenic (landscape) beauty, e.g., through an automatic classification of image content. In fact, different authors have highlighted that thinning reduces the scenic value of the landscape, but it seems to have had no significant effect on the recreational value (Brunson & Shelby 1992, Tahvanainen et al. 2001, Lupp et al. 2013). On the other hand, a natural state of the forest can be appreciated for recreational use but had no effect on scenic beauty (Tahvanainen et al. 2001). Territorial marketing activities can be promoted by means of the application of big data to create a web-based localization of high quality CES delivery areas.

A criticism of this method could be that often social media are used more to complain than to appreciate things in a positive way. However, thanks to the words associated with the pictures and provided on Flickr's post (Fig. 2), the photos could be classified as representing positive appreciation.

Conclusion

We believe that the method we applied can promote an advancement in CES local-

ization and quantification compared to available literature focusing on forest systems. The indicators and variables derived from social media represent useful information for rapid and cost-effective assessments of CES. Thanks to the availability of API queries, the suggested technique and database can be easily updated and transferred to other case studies. The methodology facilitates application from small- to large-scale analyses.

Future analyses can attempt to apply methods for automating the content analysis of social media photographs. In this sense, the online machine learning algorithm based on Google Cloud Vision™ could be tested to classify the content of images in forested areas (Richards & Tunçer 2017). Further improvement should consider the seasonality of aesthetic appreciation and the time-dependence of geotagged photographs. The application of the proposed methodology to support forest management and planning for CES promotion should however consider spatial and temporal (intra-rotation period) variability, as well as trade-off and potential impacts among different ecosystem services at local or regional level.

References

- Alivand M, Hochmair HH (2017). Spatiotemporal analysis of photo contribution patterns to Panoramio and Flickr. *Cartography and Geographic Information Science* 44 (2): 170-184. - doi: [10.1080/15230406.2016.1211489](https://doi.org/10.1080/15230406.2016.1211489)
- Bagstad KJ, Villa F, Batker D, Harrison-Cox J, Voigt B, Johnson GW (2014). From theoretical to actual ecosystem services: mapping beneficiaries and spatial flows in ecosystem service assessments. *Ecology and Society* 19 (2): 64. - doi: [10.5751/ES-06523-190264](https://doi.org/10.5751/ES-06523-190264)
- Balmford A, Beresford J, Green J, Naidoo R, Walpole M, Manica A (2009). A global perspective on trends in nature-based tourism. *PLoS Biology* 7 (6): e1000144. - doi: [10.1371/journal.pbio.1000144](https://doi.org/10.1371/journal.pbio.1000144)
- Braunisch V, Patthey P, Arlettaz R (2011). Spatially explicit modeling of conflict zones between wildlife and snow sports: prioritizing areas for winter refuges. *Ecological Applications* 21 (3): 955-967. - doi: [10.1890/09-2167.1](https://doi.org/10.1890/09-2167.1)
- Brown G, Fagerholm N (2015). Empirical PPGIS/PGIS mapping of ecosystem services: a review and evaluation. *Ecosystem Services* 13: 119-133. - doi: [10.1016/j.ecoser.2014.10.007](https://doi.org/10.1016/j.ecoser.2014.10.007)
- Brunson M, Shelby B (1992). Assessing recreational and scenic quality. How does New Forestry rate? *Journal of Forestry* 90: 37-41. [online] URL: <http://academic.oup.com/jof/article-abstract/90/7/37/4635574>
- Cao Y, O'Halloran K (2015). Learning human photo shooting patterns from large-scale community photo collections. *Multimedia Tools and Applications* 74 (24): 11499-11516. - doi: [10.1007/s11042-014-2247-0](https://doi.org/10.1007/s11042-014-2247-0)
- Carvalho-Ribeiro S, Correia TP, Paracchini ML, Schüpbach B, Sang AO, Vanderheyden V, Southern A, Jones P, Contreras B, Riordan T (2016). Assessing the ability of rural agrarian areas to provide cultural ecosystem services (CES): a multi scale social indicator framework (MSIF). *Land Use Policy* 53: 8-19. - doi: [10.1016/j.landusepol.2015.04.024](https://doi.org/10.1016/j.landusepol.2015.04.024)
- Coppes J, Braunisch V (2013). Managing visitors in nature areas: where do they leave the trails? A spatial model. *Wildlife Biology* 19 (1): 1-11. - doi: [10.2981/12-054](https://doi.org/10.2981/12-054)
- Dakin S (2003). There's more to landscape than meets the eye: towards inclusive landscape assessment in resource and environmental management. *The Canadian Geographer/Le Géographe Canadien* 47 (2): 185-200. - doi: [10.1111/1541-0064.t011-1-00003](https://doi.org/10.1111/1541-0064.t011-1-00003)
- Diktas BN (2017). An approach to determining forest areas with recreational potential: the case of forest areas around main transportation roads in the Maçka Region of Trabzon, Turkey. *Journal of Sustainable Forestry* 37(3): 286-301. - doi: [10.1080/10549811.2017.1406374](https://doi.org/10.1080/10549811.2017.1406374)
- Dunford R, Harrison P, Smith A, Dick J, Barton DN, Martin-Lopez B, Kelemen E, Jacobs S, Saarikoski H, Turkelboom F, Verheyden W, Hauck J, Antunes P, Aszalós R, Badea O, Baró F, Berry P, Carvalho L, Conte G, Czúcz B, García Blanco G, Howard D, Giuca R, Gomez-Baggethun E, Grizzetti B, Izakovicova Z, Kopperoinen L, Langemeyer J, Luque S, Lapola DM, Martinez-Pastur G, Mukhopadhyay R, Roy SB, Niemelä J, Norton L, Ochieng J, Odee D, Palomo I, Pinho P, Priess J, Rusch G, Saarela SR, Santos R, Van Der Wal JT, Vadineanu A, Vári A, Woods H, Yli-Pelkonen V (2018). Integrating methods for ecosystem service assessment: experiences from real world situations. *Ecosystem Services* 29: 499-514. - doi: [10.1016/j.ecoser.2017.10.014](https://doi.org/10.1016/j.ecoser.2017.10.014)
- Eggers J, Lindhagen A, Lind T, Lämås T, Ohman K (2018). Balancing landscape-level forest management between recreation and wood production. *Urban Forestry and Urban Greening* 33: 1-11. - doi: [10.1016/j.ufug.2018.04.016](https://doi.org/10.1016/j.ufug.2018.04.016)
- Flickr (2018). Flickr API documentation. Web site. [online] URL: <http://www.flickr.com/services/api/flickr.photos.search.html>
- Fontana V, Radtke A, Bossi Fedrigotti V, Tappeiner U, Tasser E, Zerbe S, Buchholz T (2013). Comparing land-use alternatives: using the ecosystem services concept to define a multicriteria decision analysis. *Ecological Economics* 93: 128-136. - doi: [10.1016/j.ecolecon.2013.05.007](https://doi.org/10.1016/j.ecolecon.2013.05.007)
- Fratini R (2005). Risorse forestali della Toscana e aspetti riguardanti il mercato del legno locale [Forest resources of Tuscany and aspects concerning the local wood market]. *Agriregionieuropa* 11 (42). Web site. [in Italian] [online] URL: <http://agriregionieuropa.univpm.it/it/content/article/31/42/risorse-forestali-della-toscana-e-aspetti-riguardanti-il-mercato-del-legno>
- Grêt-Regamey A, Weibel B, Kienast F, Rabe SE, Zulian G (2015). A tiered approach for mapping ecosystem services. *Ecosystem Services* 13: 16-27. - doi: [10.1016/j.ecoser.2014.10.008](https://doi.org/10.1016/j.ecoser.2014.10.008)
- Hernández-Morcillo M, Plieninger T, Bieling C (2013). An empirical review of cultural ecosystem service indicators. *Ecological indicators* 29: 434-444. - doi: [10.1016/j.ecolind.2013.01.013](https://doi.org/10.1016/j.ecolind.2013.01.013)
- Hollenstein L, Purves R (2010). Exploring place through user-generated content: using Flickr tags to describe city cores. *Journal of Spatial Information Science* 1: 21-48. [online] URL: <http://josis.org/index.php/josis/article/viewArticle/13>
- Kirilenko AP, Molodtsova T, Stepchenkova SO (2015). People as sensors: mass media and local temperature influence climate change discussion on Twitter. *Global Environmental Change* 30: 92-100. - doi: [10.1016/j.gloenvcha.2014.11.003](https://doi.org/10.1016/j.gloenvcha.2014.11.003)
- Komossa F, Van Der Zanden EH, Schulp CJ, Verburg PH (2018). Mapping landscape potential for outdoor recreation using different archetypical recreation user groups in the European Union. *Ecological Indicators* 85: 105-116. - doi: [10.1016/j.ecolind.2017.10.015](https://doi.org/10.1016/j.ecolind.2017.10.015)
- Langemeyer J, Calcagni F, Barò F (2018). Mapping the intangible: using geolocated social media data to examine landscape aesthetics. *Land Use Policy* 77: 542-552. - doi: [10.1016/j.landusepol.2018.05.049](https://doi.org/10.1016/j.landusepol.2018.05.049)
- Levin N, Lechner AM, Brown G (2017). An evaluation of crowd-sourced information for assessing the visitation and perceived importance of protected areas. *Applied Geography* 79: 115-126. - doi: [10.1016/j.apgeog.2016.12.009](https://doi.org/10.1016/j.apgeog.2016.12.009)
- Li L, Goodchild MF, Xu B (2013). Spatial, temporal, and socioeconomic patterns in the use of Twitter and Flickr. *Cartography and Geographic Information Science* 40 (2): 61-77. - doi: [10.1080/15230406.2013.777139](https://doi.org/10.1080/15230406.2013.777139)
- Lupp G, Konold W, Bastian O (2013). Landscape management and landscape changes towards more naturalness and wilderness: Effects on scenic qualities - The case of the Müritznational Park in Germany. *Journal of Nature Conservation* 21: 10-21. - doi: [10.1016/j.jnc.2012.08.003](https://doi.org/10.1016/j.jnc.2012.08.003)
- Merow C, Smith MJ, Silander JA (2013). A practical guide to MaxEnt for modeling species' distributions: what it does, and why inputs and settings matter. *Ecography* 36 (10): 1058-1069. - doi: [10.1111/j.1600-0587.2013.07872.x](https://doi.org/10.1111/j.1600-0587.2013.07872.x)
- Milcu AI, Hanspach J, Abson D, Fischer J (2013). Cultural ecosystem services: a literature review and prospects for future research. *Ecology and Society* 18 (3): 44. - doi: [10.5751/ES-05790-180344](https://doi.org/10.5751/ES-05790-180344)
- MEA (2005). *Ecosystems and human well-being: synthesis*. Island Press, Washington, DC, USA, pp. 155.
- Nahuelhual L, Carmona A, Lozada P, Jaramillo A, Aguayo M (2013). Mapping recreation and ecotourism as a cultural ecosystem service: An application at the local level in Southern Chile. *Applied Geography* 40: 71-82. - doi: [10.1016/j.apgeog.2012.12.004](https://doi.org/10.1016/j.apgeog.2012.12.004)
- Nesbitt L, Hotte N, Barron S, Cowan J, Sheppard SRJ (2017). The social and economic value of cultural ecosystem services provided by urban forests in North America: a review and suggestions for future research. *Urban Forestry and Urban Greening* 25: 103-111. - doi: [10.1016/j.ufug.2017.05.005](https://doi.org/10.1016/j.ufug.2017.05.005)
- Nov O, Naaman M, Ye C (2010). Analysis of participation in an online photo-sharing community: a multidimensional perspective. *Journal of the Association for Information Science and Technology* 61 (3): 555-566. - doi: [10.1002/asi.21278](https://doi.org/10.1002/asi.21278)
- Oteros-Rozas E, Martín-López B, Fagerholm N, Bieling C, Plieninger T (2018). Using social media photos to explore the relation between cultural ecosystem services and landscape features across five European sites. *Ecological Indicators* 94 (2): 74-86. - doi: [10.1016/j.ecolind.2018.05.049](https://doi.org/10.1016/j.ecolind.2018.05.049)

- 2017.02.009
- Paracchini ML, Zulian G, Kopperoinen L, Maes J, Schägner JP, Termansen M, Bidoglio G (2014). Mapping cultural ecosystem services: a framework to assess the potential for outdoor recreation across the EU. *Ecological Indicators* 45: 371-385. - doi: [10.1016/j.ecolind.2014.04.018](https://doi.org/10.1016/j.ecolind.2014.04.018)
- Pastorella F, Giacobelli G, De Meo I, Paletto A (2017). People's preferences for Alpine forest landscapes: results of an internet-based survey. *Journal of Forest Research* 22 (1): 36-43. - doi: [10.1080/13416979.2017.1279708](https://doi.org/10.1080/13416979.2017.1279708)
- Phillips SJ, Anderson RP, Schapire RE (2006). Maximum entropy modeling of species geographic distributions. *Ecological Modelling* 190 (3-4): 231-259. - doi: [10.1016/j.ecolmodel.2005.03.026](https://doi.org/10.1016/j.ecolmodel.2005.03.026)
- Phillips SJ, Dudík M (2008). Modeling of species distributions with Maxent: new extensions and a comprehensive evaluation. *Ecography* 31 (2): 161-175. - doi: [10.1111/j.0906-7590.2008.5203.x](https://doi.org/10.1111/j.0906-7590.2008.5203.x)
- Poor EE, Loucks C, Jakes A, Urban DL (2012). Comparing habitat suitability and connectivity modeling methods for conserving pronghorn migrations. *PLoS ONE* 7 (11): e49390. - doi: [10.1371/journal.pone.0049390](https://doi.org/10.1371/journal.pone.0049390)
- Rabe SE, Gantenbein R, Richter KF, Grêt-Regamey A (2018). Increasing the credibility of expert-based models with preference surveys - Mapping recreation in the riverine zone. *Ecosystem Services* 31: 308-317. - doi: [10.1016/j.ecoser.2017.12.011](https://doi.org/10.1016/j.ecoser.2017.12.011)
- Ribe RG (2009). In-stand scenic beauty of variable retention harvests and mature forests in the U.S. Pacific Northwest: the effects of basal area, density, retention pattern and down wood. *Journal of Environmental Management* 91: 245-260. - doi: [10.1016/j.jenvman.2009.08.014](https://doi.org/10.1016/j.jenvman.2009.08.014)
- Richards DR, Friess DA (2015). A rapid indicator of cultural ecosystem service usage at a fine spatial scale: content analysis of social media photographs. *Ecological Indicators* 53: 187-195. - doi: [10.1016/j.ecolind.2015.01.034](https://doi.org/10.1016/j.ecolind.2015.01.034)
- Richards DR, Tunçer B (2017). Using image recognition to automate assessment of cultural ecosystem services from social media photographs. *Ecosystem Services* 31: 318-325. - doi: [10.1016/j.ecoser.2017.09.004](https://doi.org/10.1016/j.ecoser.2017.09.004)
- Rovai M, Andreoli M, Gorelli G, Jussila H (2016). A DSS model for the governance of sustainable rural landscape: a first application to the cultural landscape of Orcia Valley (Tuscany, Italy). *Land Use Policy* 56: 217-237. - doi: [10.1016/j.landusepol.2016.04.038](https://doi.org/10.1016/j.landusepol.2016.04.038)
- Saarikoski H, Mustajoki J, Barton DN, Geneletti D, Langemeyer J, Gomez-Baggethun E, Marttunen M, Antunes P, Keune H (2016). Multi-criteria decision analysis and cost-benefit analysis: comparing alternative frameworks for integrated valuation of ecosystem services. *Ecosystem Services* 22: 238-249. - doi: [10.1016/j.ecoser.2016.10.014](https://doi.org/10.1016/j.ecoser.2016.10.014)
- Sacchelli S (2018). A decision support system for trade-off analysis and dynamic evaluation of forest ecosystem services. *iForest - Biogeosciences and Forestry* 11: 171-180. - doi: [10.3832/IFOR2416-010](https://doi.org/10.3832/IFOR2416-010)
- Schirpke U, Hölzler S, Leitinger G, Bacher M, Tappeiner U, Tasser E (2013). Can we model the scenic beauty of an alpine landscape? *Sustainability* 5: 1080-1094. - doi: [10.3390/su5031080](https://doi.org/10.3390/su5031080)
- Schirpke U, Timmermann F, Tappeiner U, Tasser E (2016). Cultural ecosystem services of mountain regions: modelling the aesthetic value. *Ecological Indicators* 69: 78-90. - doi: [10.1016/j.ecolind.2016.04.001](https://doi.org/10.1016/j.ecolind.2016.04.001)
- Schirpke U, Meisch C, Marsoner T, Tappeiner U (2018). Revealing spatial and temporal patterns of outdoor recreation in the European Alps and their surroundings. *Ecosystem Services* 31: 336-350. - doi: [10.1016/j.ecoser.2017.11.017](https://doi.org/10.1016/j.ecoser.2017.11.017)
- Scott MJ, Canter DV (1997). Picture or place? A multiple sorting study of landscape. *Journal of Environmental Psychology* 17 (4): 263-281. - doi: [10.1006/jevps.1997.0068](https://doi.org/10.1006/jevps.1997.0068)
- Sun Y, Fan H, Helbich M, Zipf A (2013). Analyzing human activities through volunteered geographic information: using Flickr to analyze spatial and temporal pattern of tourist accommodation. In: "Progress in Location-Based Services" (Krisp J ed). *Lecture Notes in Geoinformation and Cartography*, Springer, Berlin, Heidelberg, Germany, pp. 55-69. - doi: [10.1007/978-3-642-34203-5_4](https://doi.org/10.1007/978-3-642-34203-5_4)
- Swets JA (1988). Measuring the accuracy of diagnostic systems. *Science* 240: 1285-1293. - doi: [10.1126/science.3287615](https://doi.org/10.1126/science.3287615)
- Tahvanainen L, Tyrväinen L, Ihalainen M, Vuorela N, Kolehmainen O (2001). Forest management and public perceptions - visual versus verbal information. *Landscape and Urban Planning* 53: 53-70. - doi: [10.1016/S0169-2046\(00\)00137-7](https://doi.org/10.1016/S0169-2046(00)00137-7)
- Tenerelli P, Demsar D, Luque S (2016). Crowdsourcing indicators for cultural ecosystem services: a geographically weighted approach for mountain landscapes. *Ecological Indicators* 64: 237-248. - doi: [10.1016/j.ecolind.2015.12.042](https://doi.org/10.1016/j.ecolind.2015.12.042)
- Walden-Schreiner C, Leung YF, Tateosian L (2018). Digital footprints: incorporating crowdsourced geographic information for protected area management. *Applied Geography* 90: 44-54. - doi: [10.1016/j.apgeog.2017.11.004](https://doi.org/10.1016/j.apgeog.2017.11.004)
- Westcott F, Andrew ME (2015). Spatial and environmental patterns of off-road vehicle recreation in a semi-arid woodland. *Applied Geography* 62: 97-106. - doi: [10.1016/j.apgeog.2015.04.011](https://doi.org/10.1016/j.apgeog.2015.04.011)
- Yoshimura N, Hiura T (2017). Demand and supply of cultural ecosystem services: use of geo-tagged photos to map the aesthetic value of landscapes in Hokkaido. *Ecosystem Services* 24: 68-78. - doi: [10.1016/j.ecoser.2017.02.009](https://doi.org/10.1016/j.ecoser.2017.02.009)

Supplementary Material

Appendix 1 - Script applied for the extraction of tag-cloud.

Link: Bernetti_2821@suppl001.pdf