

Impact of climate change on tree-ring growth of Scots pine, common beech and pedunculate oak in northeastern Germany

Andreas Bauwe⁽¹⁾,
Gerald Jurasinski⁽¹⁾,
Tobias Scharnweber⁽²⁾,
Christian Schröder⁽²⁾,
Bernd Lennartz⁽¹⁾

Tree growth depends, among other factors, largely on the prevailing climatic conditions. Therefore, changes to tree growth patterns are to be expected under climate change. Here, we analyze the tree-ring growth response of three major European tree species to projected future climate across a climatic (mostly precipitation) gradient in northeastern Germany. We used monthly data for temperature, precipitation, and the standardized precipitation evapotranspiration index (SPEI) over multiple time scales (1, 3, 6, 12, and 24 months) to construct models of tree-ring growth for Scots pine (*Pinus sylvestris* L.) at three pure stands, and for common beech (*Fagus sylvatica* L.) and pedunculate oak (*Quercus robur* L.) at three mature mixed stands. The regression models were derived using a two-step approach based on partial least squares regression (PLSR) to extract potentially well explaining variables followed by ordinary least squares regression (OLSR) to consolidate the models to the least number of variables while retaining high explanatory power. The stability of the models was tested through a comprehensive calibration-verification scheme. All models were successfully verified with R^2 s ranging from 0.21 for the western pine stand to 0.62 for the beech stand in the east. For growth prediction, climate data forecasted until 2100 by the regional climate model WETTREG2010 based on the A1B Intergovernmental Panel on Climate Change (IPCC) emission scenario was used. For beech and oak, growth rates will likely decrease until the end of the 21st century. For pine, modeled growth trends vary and range from a slight growth increase to a weak decrease in growth rates. The climatic gradient across the study area will possibly affect the future growth of oak with larger growth reductions towards the drier east. For beech, site-specific adaptations seem to override the influence of the climatic gradient. We conclude that Scots pine has great potential to remain resilient to projected climate change without any greater impairment, whereas common beech and pedunculate oak will likely face lesser growth under the expected warmer and dryer climate conditions. The results call for an adaptation of forest management to mitigate the negative effects of climate change for beech and oak.

Keywords: Partial Least Squares Regression (PLSR), Precipitation Gradient, Tree-ring Growth Forecast, Standardized Precipitation Evapotranspiration Index (SPEI), Tree Rings, WETTREG

Introduction

Climatic conditions are decisive factors for the growth of trees. The yearly sequence of favorable and unfavorable climate is recorded by the sequence of wide and narrow tree rings (Fritts 1976). Compared with

pre-industrial times, the mean annual temperature has risen by about 1 °C across Europe (EEA 2012). According to regional climate models, a further increase in mean annual temperatures for northeastern Germany is predicted until 2100, associated

with a shift to drier summers and wetter winters (Kreienkamp et al. 2010). Therefore, adaptation strategies aiming at mitigating the consequences of global warming on forest ecosystems, such as increasing drought stress (Orlowsky & Seneviratne 2012) are an issue of intense debate (Bolte et al. 2009, Kätzel & Höppner 2011). In this context, future tree growth of the ecologically as well as economically very important central European tree species Scots pine (*Pinus sylvestris* L.), common beech (*Fagus sylvatica* L.), and pedunculate oak (*Quercus robur* L.) is of major interest to science and forest practitioners alike.

For these tree species, changes in growth rates due to environmental changes have become apparent across European forests during the last decades. In a comparative study, Kint et al. (2012) observed different growth trends for pedunculate oak (increase), common beech (decrease), and Scots

□ (1) Faculty of Agricultural and Environmental Sciences, University of Rostock, Justus-von-Liebig-Weg 6, D-18059 Rostock (Germany); (2) Institute of Botany and Landscape Ecology, University of Greifswald, Soldmanntr. 15, D-17487 Greifswald (Germany)

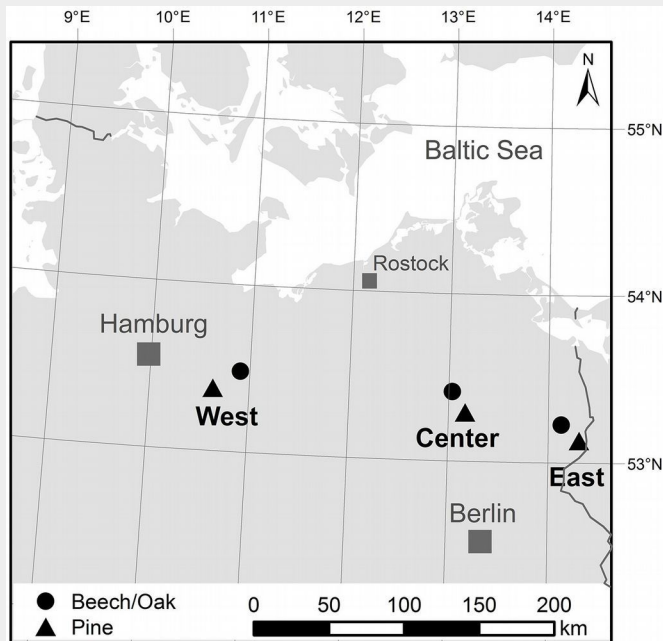
@ Andreas Bauwe (andreas.bauwe@uni-rostock.de)

Received: Aug 05, 2014 - Accepted: Sep 07, 2015

Citation: Bauwe A, Jurasinski G, Scharnweber T, Schröder C, Lennartz B (2015). Impact of climate change on tree-ring growth of Scots pine, common beech and pedunculate oak in northeastern Germany. *iForest* 9: 1-11. - doi: 10.3832/ifor1421-008 [online 2015-10-13]

Communicated by: Andrea Cutini

Fig. 1 - Location of the study sites along a west-east transect in north-eastern Germany.



pine (no trend) in northwestern European lowland forests, and related these trends to climate change and increased atmospheric N deposition. Decreasing future growth rates for Scots pine under global warming have been suggested by Reich & Oleksyn (2008) for the whole Europe, except the far north. In contrast, Martínez-Vilalta et al. (2008) reported an overall rise in radial growth of Scots pine in northeastern Spain over the 20th century and explained this with the increased atmospheric CO₂ concentration. Common beech seems to have grown faster at lower altitudes and slower at higher elevations in central Europe during past decades, driven amongst other causes by the increased tropospheric ozone concentration (Dittmar et al. 2003). Growth reductions as a consequence of increasing drought stress are reported from the southern distribution limits of beech in Spain (Jump et al. 2006) and Italy (Piovesan et al. 2008). In contrast, Tegel et al. (2014) reported on a recent growth increase of beech at its southeastern distribution limit at the Balkan Peninsula. Sessile and pedunculate oaks seem to have rising growth rates in recent decades in Germany and in northern and northeastern France, presumably driven by changes in temperature regime, CO₂ concentration and N deposition (Becker et al. 1994, Pretzsch 1996, Bergès et al. 2000). While these retrospective studies give valuable indications for regional species-specific future growth developments, the direct impact of projected climate change scenarios on radial growth (i.e., tree-ring width) of Scots pine, common beech and pedunculate oak in central European lowland forests have not been assessed adequately so far.

There is a selection of approaches for modeling tree growth ranging from relatively simple models using climatic data only (Laroque & Smith 2003, Goldblum & Rigg

2005, Takahashi & Okuhara 2013) to more complex ones using additional ecophysiological variables as predictors for regression equations (Rathgeber et al. 2005, Girardin et al. 2008). For instance, Laroque & Smith (2003) and Takahashi & Okuhara (2013) used temperature and precipitation to predict tree-ring width, while Girardin et al. (2008) extended this empirical approach by incorporating process-based physiological model results into the regression equations. Rathgeber et al. (2005) argue that empirical models based solely on meteorological variables are of weak predictive power, because of their limited ability to properly factor in the water budget. Therefore, they introduced bioclimatic variables describing the actual evapotranspiration and soil moisture, and showed that the final bioclimatic models gave better results than classic response functions. Unfortunately, measured data related to soil water balance or tree physiology are usually not available over longer time periods. The application of process-based models could be an option, but their results are themselves often characterized by high levels of uncertainty.

The use of parameters describing evapotranspiration and water balance, such as drought indexes derived from regularly measured, long-term climatic variables, could be an alternative way to increase the predictive power of the models. Recently, several studies (Friedrichs et al. 2009a, Scharnweber et al. 2011) demonstrated that the self-calibrated Palmer Drought Severity Index (sc-PDSI – Van der Schrier et al. 2006) may explain inter-annual variations of tree-ring widths better than temperature or precipitation. Another drought index, the standardized precipitation evapotranspiration index (SPEI – Vicente-Serrano et al. 2010) is based only on precipitation and temperature, and involves the climatic

water balance into its calculation. Unlike the sc-PDSI, the SPEI can be calculated for different time scales that represent drought conditions in different hydrological sub-systems, ranging from short term fluctuations of soil water content to longer term variations in groundwater storage (Vicente-Serrano et al. 2010). The high relevance of taking into account multiple time scales in the analysis of climate-growth relationships became apparent in a study by Pasho et al. (2011), who calculated the maximum correlations between tree-ring widths and the standardized precipitation index (SPI – McKee et al. 1993) for time scales from 5 to 11 months.

Here, we model tree-ring growth using monthly precipitation and temperature data of a regional statistical climate model as well as SPEI derived from these data over multiple time scales based on a comprehensive and robust calibration-verification scheme. With the resulting multiple regression models we evaluate the impact of projected climate change on tree-ring growth of Scots pine, common beech, and pedunculate oak, which are the three most important tree species in northeastern Germany. To this end, we applied a moderate regionalized climate change scenario until 2100.

Material and methods

Study sites

The study region is northeastern Germany (Fig. 1). This lowland region is mainly characterized by a flat topography and gentle slopes. Some 23% of the area is covered by forests, the main tree species being Scots pine (39%), beech (12%), and oak (9% – BMELF 2002).

The study sites were chosen to be representative for the study region and are located in the west, center, and east of a 250 km west-east transect. They represent three mature mixed stands of beech and oak as well as three pure pine stands typical for the region (Fig. 1) with otherwise similar characteristics. The ages of the six forest stands were between 110 and 210 years (Tab. 1) and the stand densities ranged from 172 to 185 trees ha⁻¹ for the mixed and from 220 to 731 trees ha⁻¹ for the pine stands. In particular, the pine stands are highly managed by the local forest authorities, which is the reason for the large differences in stand densities. Pines in northeastern Germany usually grow on soils with limited water supply, which is reflected in differences of the available water capacity (AWC) resulting in higher AWCs for the broadleaved sites (141-165 mm) compared to the pine stands (72-131 mm).

Vegetation characteristics and soil properties are similar among the broadleaved mixed stands and among the pine stands, respectively. The soil texture at all sites is dominated by sand with average contents between 80% and 95% and the prevailing soil types are Cambisols and Podzols for

the mixed deciduous and the pine forests, respectively (WRB 2006).

Northeastern Germany is located in the transition zone from the Atlantic-influenced climate in the west to a more continental climate in the east. This is reflected in the climatic situation of the study sites (Tab. 2). Temperatures at the study sites are almost identical on an annual time scale, but vary across seasons with temperatures being about 1 °C higher in summer and about 1 °C lower in winter at the eastern compared to the western sites. The annual precipitation totals decrease from the western to the eastern parts of the region, with about 150 mm lower precipitation in the East compared to the West.

Tree-ring data

At each site, we selected a minimum of 18 dominant trees of each species and extracted two cores at breast height, taken perpendicular to each other. The cores were glued to wooden mounts, sanded and finally the ring widths were measured with an accuracy of 1/100 mm using a LINTAB-measuring table and the software TSAP-Win (Rinn 2003). The two measurements per tree were averaged after cross-dating them first visually and then statistically using the COFECHA[®] software package (Holmes 1999), resulting in tree-ring width series per tree. In order to emphasize the climatic signal and to remove the non-climatic age trend as well as the influence of disturbance, competition and management from the raw measurements, we first detrended the single series (Cook & Kairiukstis 1990) before combining the single-tree related series to stand chronologies.

Two detrending methods, differing in the flexibility of the fitted trend curve, were tested and compared. In a first conservative approach, a negative exponential function or, if not appropriate (function non-decreasing or some values negative), a straight line was fitted to the raw measurements, to retain as much low frequency (decadal) variations in the tree-ring data as possible. In a second, less conservative approach, more flexible cubic smoothing splines (Cook & Peters 1981) were fitted to the data, with a frequency response of 50% at 32 years that removed most of the low frequency signal. While the first approach typically retains a potential signal of longer term climatic trends, at the same time non-climatic growth releases following management interventions or natural disturbances are not removed from tree-ring data. Thus, the climatic signal might get blurred by this approach. In contrast, the flexible spline detrending method strongly emphasizes the inter-annual growth variations by eliminating both, potential decadal climatic and non-climatic trends.

The ring-width indexes were derived by subtracting the trend curve from the raw measurements after initial power transformation, a method that is preferable to divi-

Tab. 1 - Site and stand characteristics. (AWC): available water capacity; (DBH): diameter at breast height.

Study Site	Lat. Lon.	Elevation (m a.s.l)	Mean stand age (years)	Density (trees/ha)	Mean stand height (m)	DBH (cm)	AWC (mm/m)
Pine West	53.377 N 10.370 E	15	130	276	22.0	39	131
Pine Center	53.294 N 13.166 E	73	121	220	29.5	43	121
Pine East	53.135 N 14.209 E	35	110	731	25.0	28	72
Beech/Oak West	53.485 N 10.915 E	50	125 (210)	172	34.6	42	155
Beech/Oak Center	53.417 N 13.033 E	80	130	172	31.2	44	141
Beech/Oak East	53.223 N 14.130 E	20	140	185	30.0	43	165

sion (Helama et al. 2004). Finally, autocorrelation, *i.e.*, the growth persistence of the previous year(s), was removed by autoregressive modelling, and the detrended single tree series were averaged to species specific site chronologies using a bi-weight robust mean. All chronology computations were carried out using the software package ARSTAN (Cook 1985).

The differently detrended chronologies showed only small differences. In general, inter-annual variations were similar between both approaches, with the negative exponential/straight line approach producing slightly higher amplitudes (Fig. S1 in Appendix 1). Since no common longer-term trend emerged, we decided to use the spline detrended chronologies for all further analyses to avoid the potential interference of management-related growth trends with climate growth relationships. Common dendrochronological statistics as the mean sensitivity (MS) – a measure of the strength of inter-annual fluctuations, the mean interseries correlation (Rbar) – indicating the strength of the common signal among all trees – and the expressed population signal (EPS) – a measure of how well a subsample represents the theoretical population, were computed for all chronologies over the common period 1910-2009 (Tab. S1 in Appendix 1).

Climate data

Climatic data were taken from the 1×1 km grid of monthly values for precipitation and temperature (mean, min, max) of the German Weather Service, which contains continuous data for the whole country since

1901. This grid product has the advantage that climatic data is readily prepared with a very high accuracy for the desired location. In addition, for drought index computation, the climatic water balance was determined using the approach of Thornthwaite (1948) as the difference between monthly precipitation and monthly potential evapotranspiration. SPEIs were then calculated for every site using the log-logistic probability distribution function for the time scales of 1, 3, 6, 12, and 24 months. The result is a standardized variable with an average value of 0 and a standard deviation of 1. We calculated SPEIs using the R package SPEI 1.2 (Beguería & Vicente-Serrano 2012).

Model construction

We used the nine chronologies (3 tree species × 3 sites) through a 100-year period from 1910 until 2009 and the corresponding climatic variables to build the regression models. For all models, monthly mean temperatures (max, mean, min), monthly precipitation sums, and the SPEIs covering time scales of 1, 3, 6, 12, and 24 months over an 18-month window (from May of the previous year until October of the growing year) entered the analysis as potential variables to predict the ring-width indexes (RWI). Hence, we started with 162 variables as potential predictors. We did not eliminate variables in advance on the basis of strong inter-correlations among variables or low relations with RWI, since some variables could become important only when in concert with others. Instead, the final models were obtained in two steps, namely variable pre-selection and va-

Tab. 2 - Average precipitation and temperatures at the study sites (1971-2000). January and July refer to the coldest and warmest months in the study region.

Study Site	Precipitation (mm)		Temperature (°C)	
	Annual	Annual	January	July
Beech/Oak West	662	8.8	0.8	17.3
Pine West	637	9.0	0.9	17.7
Beech/Oak Center	609	8.2	-0.2	17.2
Pine Center	592	8.4	-0.2	17.5
Beech/Oak East	506	8.8	0.0	18.1
Pine East	496	9.0	0.1	18.4

riable reduction, that are described in details hereafter.

The following procedure was applied to each of the 9 chronologies. Partial least squares regression (PLSR – Wold et al. 2001) models were built by using the R package “autopl” version 1.2-3 (Schmidlein et al. 2012). PLSR has the advantage that variables can be highly inter-correlated and that the number of variables can be larger than the number of observations, which is a constraint for other regression techniques. We used stepwise backward selection combined with a 10-fold cross-validation to substantially reduce the number of variables, *i.e.*, to extract the variables with the highest explanatory power. The PLSR procedure was repeated 100 times, because the results were not stable, meaning that the obtained PLSR models differed widely both in the number and in the choice of variables and, hence, in their predictive performance. The 100 runs yielded 100 models, and we extracted the 5 “best” models based on a performance index I_p , which was taken by combining important model statistics (eqn. 1):

$$I_p = \frac{N_s}{N} + (1 - R_{cal}^2) + (1 - R_{val}^2) + RMSE_{cal} + RMSE_{val} + R_{diff}^2 + RMSE_{diff}$$

where N is the number of variables that entered the model ($N=162$), N_s the number of significant variables, R_{cal}^2 and R_{val}^2 the coefficients of determination for calibration and validation, respectively; $RMSE_{cal}$ and $RMSE_{val}$ the root mean square errors for calibration and validation, respectively; $R_{diff}^2 = R_{cal}^2 - R_{val}^2$, and $RMSE_{diff} = RMSE_{cal} - RMSE_{val}$. Thus, the model showing the lowest number of retained variables, the highest R^2 s and lowest $RMSE$ s (both for calibration and validation), and the smallest differences between the last two, has the lowest (*i.e.*, best) performance index I_p . This seems reasonable to us because in models with high coefficients of determination and

low error terms for calibration and validation the retained variables have high predictive power. In addition, when aiming at modeling scenarios it is also important that calibration and validation performances are similar. Therefore, we included the difference terms. Finally, N_s was included because we were looking for the best performing model with the least number of variables to avoid overfitting.

We further reduced the number of variables by applying ordinary least squares regression (OLSR) to the set of final variables included in the 5 “best” PLSR models. This step was necessary, because it became obvious in initial tests that after performing OLSR, the former 1st, 2nd, 3rd, or 4th best PLSR model could be the best OLSR model based on the Akaike information criterion (AIC). We used the function “step” of the R package “stats” (R Development Core Team 2011) with an iterative approach of combined forward and backward selection, using the lowest AIC as selection criterion for deciding on the final regression equations. Eventually, the final models consisted of five to ten predictor variables. The regression coefficients used for modeling future growth response were obtained by fitting these models over the data of the complete observation period 1910-2009.

Calibration-verification procedure

To evaluate the stability and quality of the regression models, the predictors that had been identified with the above approach were subjected to an extensive calibration-verification procedure. From the entire 100 years data set, 50 years were randomly selected as calibration data set and the remaining 50 years were used as verification data set. This procedure was repeated 100 times resulting in 100 regression coefficients for each variable. Several quality parameters that are described below were calculated for each run, resulting in 100 values for each quality parameter. Finally, the overall robustness and predictive perfor-

mance of the models were evaluated by calculating mean values and standard deviations of the quality parameters.

We used the following parameters to verify the quality of the regression models: adjusted coefficient of determination (adj. R^2) and root mean square error (RMSE) for calibration; R^2 , RMSE, sign test (ST), cross-product mean test (PM), reduction of error (RE), and coefficient of efficiency (CE) for verification. The ST statistic compares the direction of change in tree-ring width from one year to the other in the observed and the predicted data set. This test counts the number of agreements and disagreements between both series. A significant relation between the observed and predicted chronology is accepted if the number of agreements is significantly larger than the number of disagreements (Fritts 1976). The PM statistic calculates the product of observed and predicted yearly departure from their respective mean values. The products of agreements and disagreements are summed up separately, and the difference between both sums is tested with the t-statistic (Fritts 1976). The RE and CE statistics provide other methods to test the strength of associations between observed and predicted values, which both result in values from $-\infty$ to $+1$ (Cook et al. 1994). RE and CE > 0 indicate that the predicted values are better than the mean of the observed values in the calibration period (RE) and in the verification period (CE). For details, see Fritts (1976) and Cook et al. (1994).

Climate change scenario

Future weather data (Fig. 2) were taken from the regional climate model WETTREG2010 (Kreienkamp et al. 2010). WETTREG2010 uses a statistical downscaling method and is forced by the atmospheric general circulation model ECHAM5/MPI-OM (Roeckner et al. 2003). It provides daily weather data until 2100. To forecast the tree-ring growth of the three tree species under study, the greenhouse gas emission

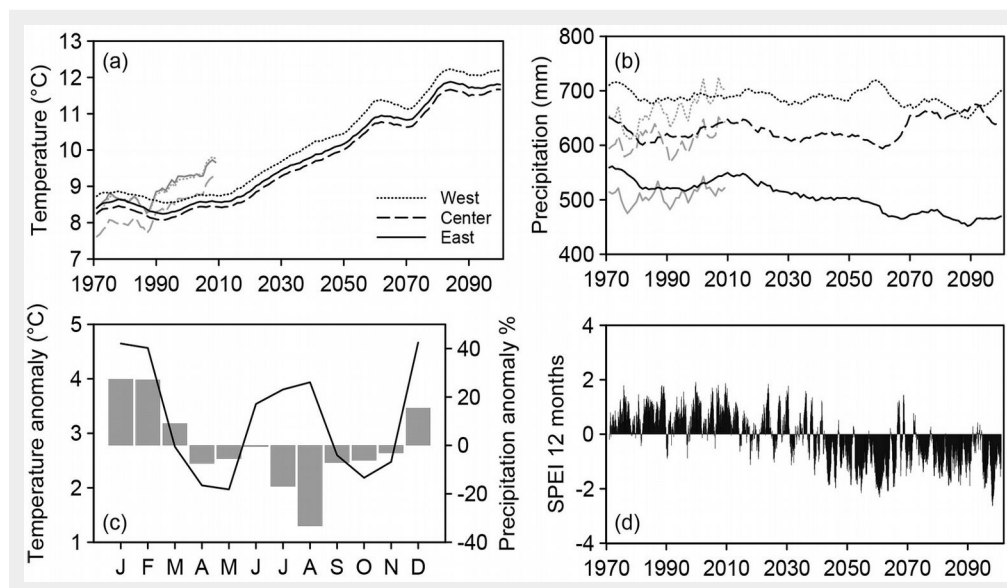


Fig. 2 - Climate projections according to the A1B emission scenario of the regional climate model WETTREG2010 for the period 1971-2100. (a) Mean annual temperature and (b) annual precipitation with corresponding observed values for the period 1971-2010 (gray lines). (c) Monthly deviation of temperature and precipitation in the distant future (2071-2100) from the reference period (1971-2000) averaged over the study sites. (d) Twelve-months standardized precipitation- evaporation index (SPEI) for the central beech/oak site.

scenario A1B was assumed. Scenario A1B is based on a balanced emphasis on all energy sources (IPCC 2007). Data are available in ten data sets for 398 climate and 3012 precipitation stations across Germany. For each site, we used the data from the nearest precipitation (4-7 km) and climate stations (4-24 km) for every site, and applied the final models to predict future RWIs for all ten data sets. To evaluate growth trends, we used the following periods for comparison: 1971-2000 as reference period, 2021-2050 as near future and 2071-2100 as distant future.

Results

Calibration and verification

Chronology statistics showed that for the common period 1910-2009 the EPS was well above the generally applied threshold of 0.85 (Wigley et al. 1984) for all species at all sites. A comparatively high Rbar between 0.34 and 0.59 indicates a common (climatic) forcing for all species (Tab. S1, Fig. S1 in Appendix 1).

The number of variables and the selection of climatic elements that entered the final models differed slightly among the sites (Tab. 3). The number of predictors in the final regression models, on the basis of 162 source variables, were relatively low, and ranged from 5 (*Pinus*, west) to 10 (*Fagus*, east) with a mean value of 8. In general, all climatic elements were relevant for model building, except SPEI24 which was only significant for the central pine stand. Variables of the growing year were more important (n=67) than variables of the previous year (n=26). Some seasonal patterns were observed: variables of the summer months were most frequently retained in the models, whereby June dominated the SPEI variables at the one and three month time scales, and July and August dominated the temperature variables (mean, min).

The final regression models were able to reproduce the tree-ring growth for both the mixed beech and oak stands and the pine stands (Tab. 4, Fig. 3). The goodness-of-fit parameters of the models revealed two general patterns: (i) prediction accu-

Tab. 3 - Climate variables of the final regression models. Numbers refer to months of the growing year. (*): indicates months of the previous year.

Study Site	Precipitation	Temperature			SPEI				
		max	mean	min	01	03	06	12	24
Pine West	-	2	2	-	6*/6	-	-	9	-
Pine Center	6	2/5/10	3/8	5*	-	-	-	-	1
Pine East	9*	10	-	8	3/5/6	-	-	7	-
Beech West	-	-	12*	2/7/10	6	7	3	1/9	-
Beech Center	11*	-	-	6*	6	9*/7/10	-	-	-
Beech East	8	10	6*/10*	7	-	6/7	12*	6*/12*	-
Oak West	4/6	-	-	10*	-	7	7*/8	6	-
Oak Center	1	6*	10*/8	-	6/7	9*	-	-	-
Oak East	1/2/5/8	-	-	8	6	-	10	6	-

cy was species-dependent and increased in the order from pine, to oak, to beech; and (ii) prediction accuracy was location-dependent, with a higher predictive power eastwards for all three tree species. One exception from the latter was the central pine stand, at which the predictive performance was slightly higher than in the east. The adjusted coefficients of determination over the 50-year calibration period ranged from comparably low (adj. $R^2 = 0.24$) for the western pine stand to very high (adj. $R^2 = 0.67$) for beech at the eastern site (Tab. 4). Coefficients of determination (R^2) for the verification period were only slightly lower, ranging from 0.21 for the western pine stand to 0.62 for beech at the eastern site. The sign test (ST), the cross-product means test (PM), the reduction of error (RE), and the coefficient of efficiency (CE) indicated that all models properly predicted the tree-ring growth, hence the inter-annual change and the magnitude of tree-ring width. These four tests showed fair values for the pine stands and excellent values for beech and oak, especially in the east (Tab. 4). In addition, the low standard deviations of the quality parameters indicate that the developed models were robust and valid for any chosen data set for calibration and verification.

Radial-growth forecast

The predicted chronologies, based on the regional climate model, are in the range of the observed data for the common period

1971-2009 (Fig. 4) and illustrate the good agreement of the climate model with the actual climatic conditions over the past 40 years (see also Fig. 2). Excellent fits were obtained for all pine stands, and for beech and oak at the central site as well. For the western and eastern mixed stands of beech and oak, slightly higher RWIs were predicted for the reference period. Since the simulated chronologies depicted in Fig. 4 are the mean of 10 predicted chronologies constructed from 10 WETTREG2010 simulations, inter-annual dynamics appear much lower as compared with the observed RWIs.

The models yielded different trends in tree-ring indexes under future climate scenarios (Fig. 4). The chronologies illustrate a tendency of decreasing tree-ring widths towards the end of the 21st century (Fig. 4, Fig. 5). The strength of this trend varies both across species and regions. For pine, a weak decrease of RWI is projected for the western (-3.5%) and the eastern stand (-4.5%) in the near future (2021-2050) compared to the reference period (1971-2000). In contrast, the central stand will experience a slight increase of 1.5% over the same period. The tree-ring growth of beech and oak is projected to decrease at all sites in the near future. For these tree-species, the strongest change of RWI was predicted for beech in the West (-11%) and oak in the East (-8%). The predicted trends for the near future will continue for all three tree species up to the year 2100. For the distant

Tab. 4 - Calibration and verification statistics of the regression models. The observation period is 1910-2009. One-hundred calibration-verification runs were conducted with 50 randomly chosen years for calibration and the rest for verification. (R^2): coefficient of determination; (RMSE): root mean square error; (ST): sign test ($p < 0.05$ if $n(-) < 18$); (PM): cross-product means test ($p < 0.05$ if $PM > 1.677$); (RE): reduction of error (satisfactory if $RE > 0$); (CE): coefficient of efficiency (satisfactory if $CE > 0$). Mean values and standard deviations are given.

Study Site	Calibration			Verification					
	R^2	adj. R^2	RMSE	R^2	RMSE	ST (+/-)	PM	RE	CE
Pine West	0.32 ± 0.06	0.24 ± 0.07	0.098 ± 0.007	0.21 ± 0.06	0.109 ± 0.008	32/17 ± 3	4.19 ± 0.38	0.15 ± 0.11	0.11 ± 0.12
Pine Center	0.53 ± 0.06	0.43 ± 0.07	0.079 ± 0.008	0.38 ± 0.07	0.095 ± 0.009	36/13 ± 3	4.56 ± 0.51	0.34 ± 0.10	0.31 ± 0.10
Pine East	0.44 ± 0.08	0.34 ± 0.10	0.092 ± 0.007	0.32 ± 0.07	0.108 ± 0.009	34/15 ± 3	3.96 ± 0.50	0.26 ± 0.13	0.24 ± 0.14
Beech West	0.62 ± 0.06	0.54 ± 0.08	0.078 ± 0.007	0.46 ± 0.08	0.098 ± 0.010	36/13 ± 3	4.06 ± 0.59	0.42 ± 0.13	0.40 ± 0.14
Beech Center	0.61 ± 0.06	0.56 ± 0.07	0.115 ± 0.009	0.52 ± 0.07	0.133 ± 0.010	38/11 ± 3	4.25 ± 0.45	0.48 ± 0.10	0.45 ± 0.11
Beech East	0.74 ± 0.05	0.67 ± 0.06	0.098 ± 0.010	0.62 ± 0.07	0.128 ± 0.012	39/10 ± 3	5.18 ± 0.60	0.60 ± 0.08	0.58 ± 0.09
Oak West	0.50 ± 0.07	0.42 ± 0.08	0.066 ± 0.006	0.36 ± 0.08	0.080 ± 0.007	35/14 ± 3	4.05 ± 0.44	0.33 ± 0.12	0.30 ± 0.14
Oak Center	0.59 ± 0.06	0.53 ± 0.07	0.072 ± 0.007	0.47 ± 0.07	0.087 ± 0.008	37/12 ± 3	4.55 ± 0.40	0.44 ± 0.09	0.42 ± 0.09
Oak East	0.70 ± 0.05	0.65 ± 0.06	0.067 ± 0.007	0.60 ± 0.07	0.081 ± 0.007	38/11 ± 3	5.48 ± 0.54	0.59 ± 0.09	0.57 ± 0.09

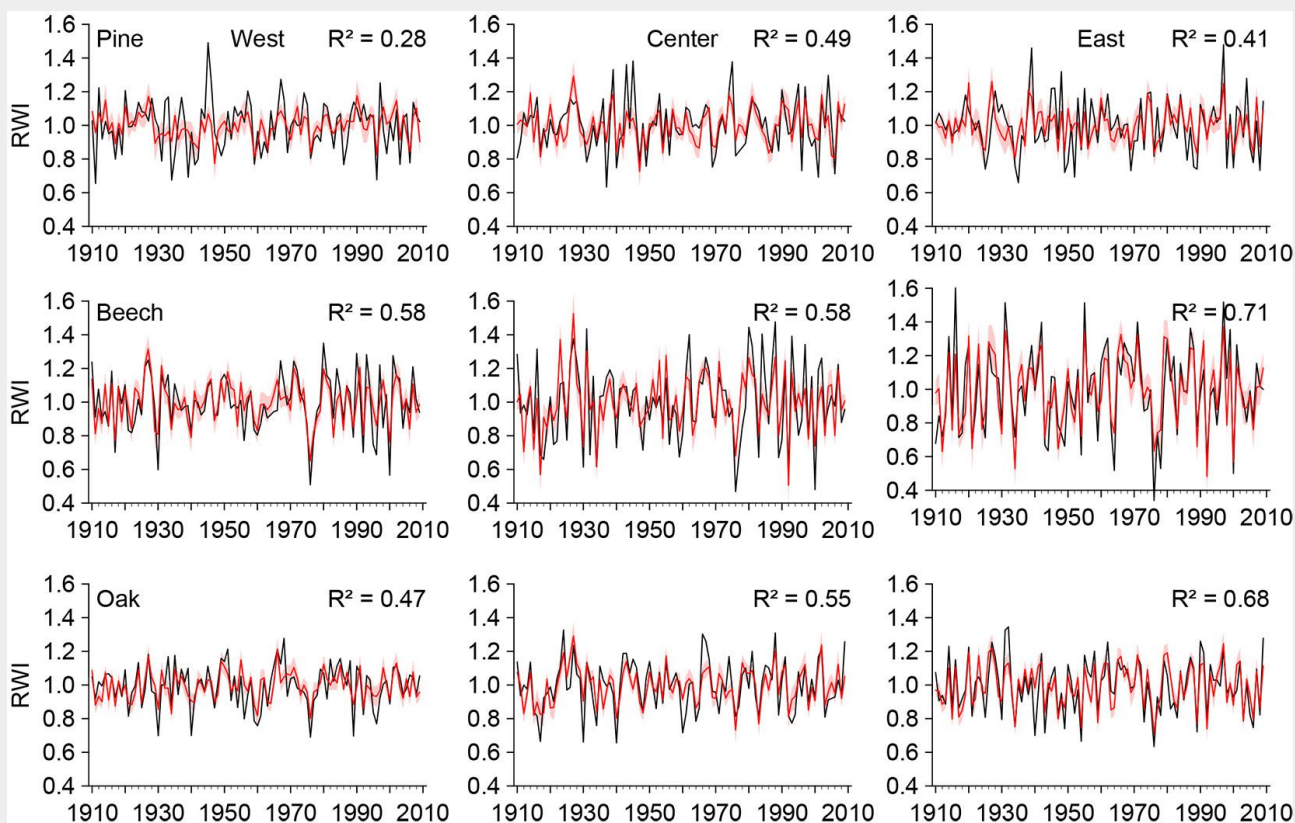


Fig. 3 - Observed (black) and predicted (red) ring-width indices (RWI) over the calibration period 1910-2009 with 95% confidence interval (light red bands). (R^2): coefficient of determination.

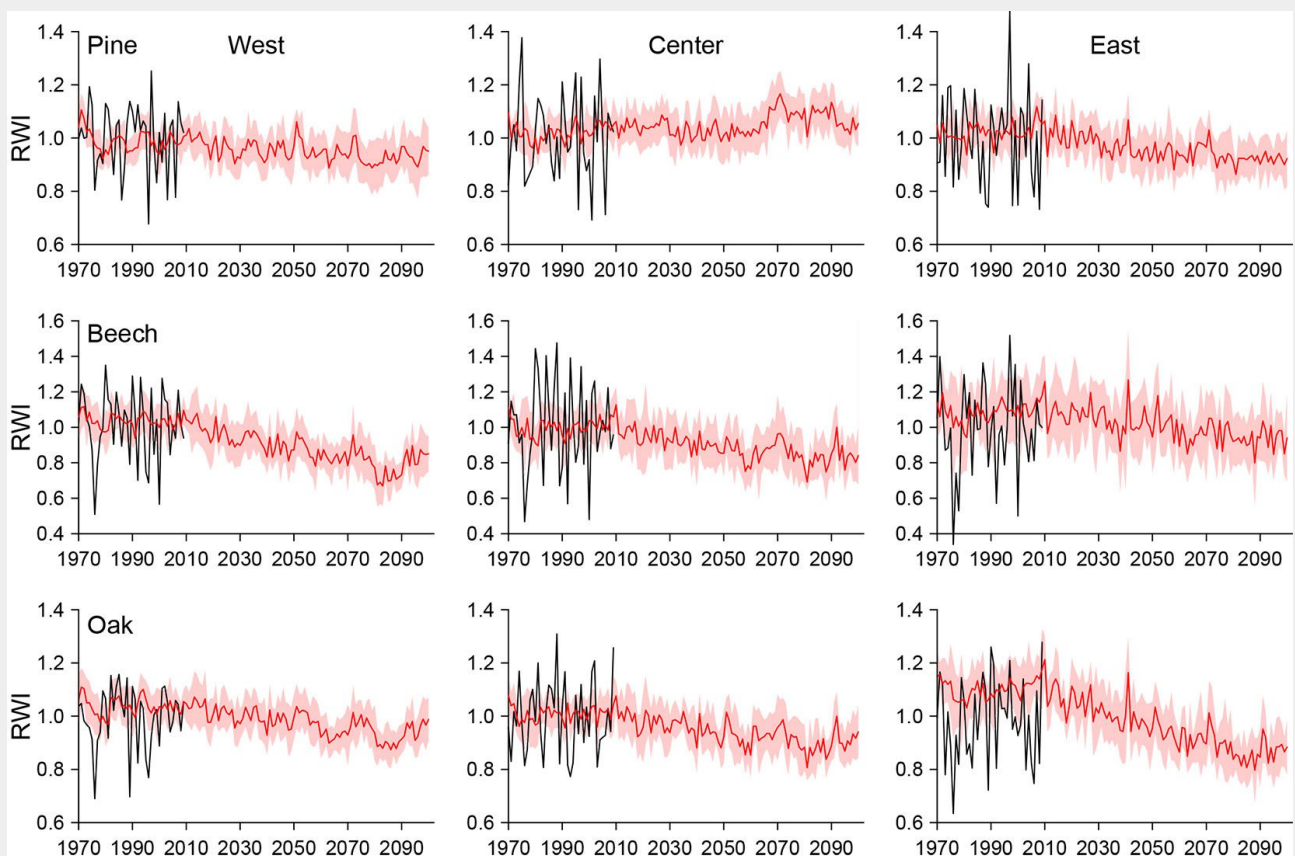


Fig. 4 - Predicted ring-width indices (RWI) for pine, beech, and oak in the regions west, center, and east as mean values of 10 WET-TREG2010 simulations (red lines) and standard deviations (light red bands). Observed chronologies for the period 1970-2009 are also shown for comparison.

future (2071-2100), the most extreme growth depressions were predicted for beech at the western (-23%) and for oak at the eastern site (-20%) compared to the reference period, whereas a slight growth increase is projected for pine at the central site (+7%).

Discussion

Calibration and verification

The calibration-verification approach that we used had, to our knowledge, not yet been applied before to tree-ring growth forecasts. In contrast to comparable studies that divided the entire data set once into two periods for calibration and verification (Laroque & Smith 2003, Takahashi & Okuhara 2013), we randomly selected half of the observation years for calibration and the remaining half for verification and repeated this procedure many times. This results in a large number of regression models with the same predictors but different coefficients, depending on the chosen calibration years, and allows a comprehensive evaluation of the robustness of the final model and the quality of the predictors by analyzing the statistical spread across the calibration-verification runs. Two statistics show the high robustness of the regression models: (i) the low standard deviations of the goodness-of-fit parameters indicate that the chosen predictors yielded similar growth estimations for any chosen data subset; and (ii) the values of the verification statistics were only slightly weaker compared to the calibration statistics for all 9 regression models, indicating that all models represent new data very well.

The quality of the resulting models is also supported by the fact that most of the retained predictor variables have an eco-physiological meaning. The dominance of variables representing data of June and July of the growing year illustrates the importance of early summer weather conditions, the period of maximum ring growth, for radial increments of all three tree species (Lebourgeois et al. 2005, Drobyshev et al. 2008, Friedrichs et al. 2009a). In addition, the frequent occurrence of previous years' parameters illustrates the importance of preceding weather conditions such as severe drought periods for tree growth (Scharnweber et al. 2011). Nevertheless, some variables or variable combinations are not easily explained with eco-physiological processes. For example, the inclusion of November precipitation of the previous year for beech at the central site in the final model is difficult to explain, and it may be that a small number of predictors were retained because of statistical mathematics only. To avoid the inclusion of spurious interaction terms, the models could have been constructed with a restricted number of exclusively significant climate variables resulting from foregoing correlation and/or response function analysis (Takahashi & Okuhara 2013), including the removal of

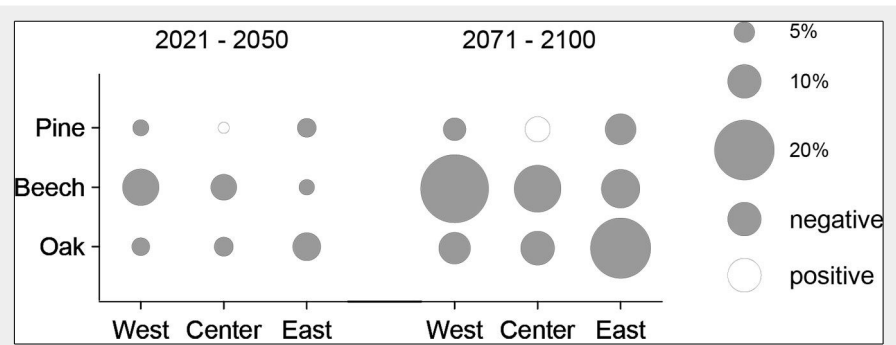


Fig. 5 - Percentage change of ring-width indexes for pine, beech, and oak and the regions west, center, and east between the reference period (1971-2000) and both the near (2021-2050) and the distant future (2071-2100). The size of the circles represents the mean change according to 10 WETTREG2010 simulations.

inter-correlations. However, we favored to include all variables into model building to allow for capturing potential lag effects or hidden interactions between environmental factors affecting tree-ring growth.

The large number of SPEI-variables in the final regression models demonstrates that the inclusion of this parameter was beneficial. Moreover, the incorporation of this multiscalar drought index (Vicente-Serrano et al. 2010) across different time scales took into account the fact that the strongest relationships between tree-ring width and drought indexes are usually found for time scales larger than one month. The relevant time scales seem to be species- and site-dependent (Pasho et al. 2011, Vicente-Serrano et al. 2014). This was also apparent in our models, in which one month SPEIs were often selected as predictors for pine, whereas SPEIs over longer time scales (3-12 months) were frequent in the final models for beech and oak.

Tree growth response to a changing climate

Scots pine

According to our results the direct impact of changing climatic conditions on pine growth in northeastern Germany will be moderate. Divergent growth trends with slight growth reductions in the west and east and a slight growth increase at the central site were predicted. The comparably low predictive power of the final regression models suggests a weak climatic forcing on tree-ring growth of Scots pine. Climatic differences across the study area did not influence growth trends of pine, which may be related to the good climatic adaptation of this species in the northeastern German lowlands (Bauwe et al. 2013). In line with the findings of Von Lührte (1991) and Bauwe et al. (2013), we found an influence of winter temperatures on pine growth for the western and central stand. The growth promoting influence of warmer winters in the climate projections, thus, seems to balance the negative impact of increasing summer drought (inclusion of SPEIs referring to June in the models).

Together with the relatively high drought resistance of Scots pine, this might explain the more or less stable future growth trends in our models.

These results confirm that in the temperate lowland forests of north-east Germany Scots pine experiences optimal growth conditions in a physiological sense (Ellenberg & Leuschner 2010). On a broader European scale, increased growth trends for far northern and decreased growth trends for central and southern Europe have been suggested (Reich & Oleksyn 2008). Our results with indifferent and weak growth trends match these findings, thus it can be assumed that northeastern Germany is located in the transition zone from the increasing growth trends northwards to the decreasing growth trends southwards. However, although no growth trends were found throughout the 20th century (Pérez et al. 2005, Kint et al. 2012), a potential growth decline in central Europe is expected for Belgian (Kint et al. 2012) and for northeastern German (Pérez et al. 2005) pine stands. Overall, our results suggest that potential future risks for Scots pine trees are not primarily direct effects of changing climatic conditions but may rather be driven by possible biotic disturbances such as needle-feeding and bark-breeding insects (Kätzler & Höppner 2011).

Common beech

The regression models predicted a notable decline in growth trends at all investigated sites for beech until 2100. The good predictive power of the models suggests a relatively strong climate signal in the tree rings of beech in northeastern German lowlands. In particular, the large number of variables for temperature and SPEI referring to June and July underlines the importance of early summer weather conditions for tree-ring growth. Soil water availability in early summer has been identified as the main driver for beech growth at different locations and under different site conditions in central Europe (Dittmar & Elling 1999, Lebourgeois et al. 2005, Friedrichs et al. 2009a, Scharnweber et al. 2011, 2013). Rising temperatures and a fall in the

amounts of precipitation in spring and summer will trigger more frequent drought periods in the upcoming decades, which presumably will lead to less growth for beech in the northeastern German lowlands. Our model forecasts confirm an ongoing trend during several decades and that is likely to continue. For example, increased drought sensitivity of beech has been observed at low mountain forest sites with different site conditions both in western/central Germany (Friedrichs et al. 2009a) and at our study sites (Scharnweber et al. 2011) during the last decades. Moreover, several factors ascribed to global change have already negatively affected the growth of beech at different locations in Europe (Jump et al. 2006, Piovesan et al. 2008, Kint et al. 2012, Härdtle et al. 2013).

The larger growth reduction at the wetter western stand (-23%) in comparison to the drier eastern stand (-12%) was surprising. The study plots were selected under the premise of similar properties with respect to soil conditions and stand structures. Because of the similarity of the stands, it seems unlikely that the larger growth reduction at the wetter western stand is driven by site-related attributes. Different site-specific adaptations are a much more likely explanation. An increase in sensitivity together with a higher frequency of negative pointer years at the western compared to the eastern site during the last decades was observed by Scharnweber et al. (2011). A better adaptation of beech forests to climatic extremes at dry sites have also been observed for forests in Luxembourg (Härdtle et al. 2013) and in Switzerland (Weber et al. 2013). In the last quarter of the 20th century, Weber et al. (2013) observed increased drought sensitivity at mesic sites, while drought sensitivity remained nearly constant at dry sites, suggesting a better adaptation of beech forests to climatic extremes at dry sites. Härdtle et al. (2013) reported of a similar sensitivity to long-term shifts in temperature and precipitation both for stands with sufficient and poor water supply in temperate lowland beech forests in Luxembourg, and state a strong adaptation of trees growing at dryer sites. Taking up our model projections and these recent findings, we conclude that trees at the drier eastern site might be better prepared to projected climate change. Trees growing at the wetter western site might respond with growth depressions due to a higher frequency of drought periods in the future.

It must be noted that the mixed composition of beech and oak trees in our study sites may have affected the climate-growth relationships and consequently the modeling results. The deeper rooting oaks may alter the soil water conditions considerably due to their hydraulic lift. This may lead to a drought-stress release for beech trees (Pretzsch et al. 2013). Consequently,

drought reactions of mixed beech forests differ from those in pure stands. This means that in a strict sense our results should only be generalized for mixed forests. However, the general tendency of decreasing future growth will likely be the same in pure stands and, without facilitation by surrounding oaks, even stronger.

Pedunculate oak

The regression models predicted decreasing growth rates for pedunculate oak until 2100 at all investigated sites. The predictive power was slightly lower compared to beech, but still high enough to suggest a strong climate signal in the tree rings. As for beech, tree-ring growth seems to be mainly driven by early summer weather conditions, as indicated by the large number of predictor variables for such months. This is in accordance with a bundle of European studies that identified soil water availability in early summer as the main growth limiting factor for oak (Kelly et al. 2002, Drobyshev et al. 2008, Friedrichs et al. 2009a, Scharnweber et al. 2011). Due to climate change, drought periods are expected to be more frequent in the future (Lindner et al. 1997, Grigoryan et al. 2010), probably inducing growth reductions of oak in northeastern Germany.

Our results are in contrast with those from temperate lowland oak forests of Belgium (Kint et al. 2012) and France (Becker et al. 1994, Bergès et al. 2000) reporting increased growth rates. The first study attributed the increased oak growth to the increase of temperature in the growing season, the latter suggested a number of environmental changes in, *inter alia*, temperature regime, CO₂ concentration, and N deposition as drivers of increased growth rates for both sessile and pedunculate oak in northern and northeastern France. One possible explanation for the projected reductions in growth rates at our study sites could be the poor soils consisting mainly of sand with medium to low water storage capacity (Scharnweber et al. 2011), whereas the oaks analyzed by Kint et al. (2012) grow on deep loamy soils with excellent water holding capacity. The impact of sufficient water supply on tree-ring growth was reflected in notably higher growth reductions in the east compared to the west. The models showed that different precipitation regimes across the northeastern German lowlands may influence the magnitude of future decrease in growth rates for oak substantially. An increased climate forcing resulting from decreasing precipitation eastwards has been described previously (Scharnweber et al. 2011). Already in the recent past, unfavorable environmental conditions such as summer drought or winter frost combined with biotic disturbances have led to oak decline in central Europe (Thomas et al. 2002). However, general estimates of future growth rates for oak in Central Europe are uncertain (Friedrichs et al. 2009b). We recommend cau-

tion in transferring the predictions made for northeastern Germany to broader regions, because climate is not the only forcing factor here, and the future growth of oak depends on multiple environmental factors.

Uncertainty and limitations

Our predictions are based on average population series instead of individual tree chronologies. This approach may have implications on the overall results. It has been shown by Carrer (2011) that due to the chronology computation procedure (averaging) the climate responsiveness of single trees is often overestimated. In our case this would mean that the modeled trends of declining growth are possibly slightly overestimating the “real” trend of single trees. However, Carrer (2011) concludes that the application of average population series, as in our study, is the most effective way to extract the climatic signal from the tree-ring sequences. Due to the inherent age trend of the raw data and possible influences of management and other disturbances, it was necessary to base our models on detrended ring-width indexes. The applied detrending procedure might also have removed potential climatically-induced long-term growth trends. We assume this potential bias is small because the conservative negative exponential detrending – preserving much of the decadal variations – and the rather flexible spline detrending led to very similar index chronologies.

We predicted the response of the tree-ring growth solely on the basis of projected meteorological variables. When interpreting the results one should be aware of the boundary conditions of the modeling approach and the subsequent restrictions. First of all, the climatic variables of the greenhouse gas emission scenario are factors of uncertainty (IPCC 2007). Secondly, the growth of trees is a function of multiple abiotic and biotic factors of which many were not considered. For instance, growth trends may be influenced by further CO₂-enrichment of the atmosphere (Ainsworth & Long 2005, Huang et al. 2007, Martínez-Vilalta et al. 2008) and the associated possible increase in intrinsic water use efficiency of trees (Ellsworth 1999), changes in nitrogen deposition (Solberg et al. 2004, Laubhann et al. 2009) or increasing occurrence of defoliating insects (Mansion 1991, Thomas et al. 2002) due to global warming. Therefore, our predictions should be considered as growth scenarios that may be refined by future analyses of other abiotic and biotic variables affecting tree growth.

Conclusions

We were able to predict future tree-ring growth of Scots pine, common beech, and pedunculate oak based on rigorous variable selection using PLSR and OLSR techniques, and a comprehensive calibration-

verification scheme. Our projections are based on a regional climate change scenario with moderate forcing and suggest that climate change will influence tree-ring widths, i.e., radial growth of the three major tree species in northeastern Germany during the 21st century. The impact of regional climate change seems to be species-dependent. Whereas Scots pine has a great potential to remain an important tree species, able to deal with the projected warmer and dryer conditions without any greater impairment, beech and oak are expected to suffer a moderate growth decline in the future. Projected future growth varies across the study area with larger growth reductions for oak towards the drier east. In contrast, site-specific adaptations for beech seem to override the influence of different precipitation regimes.

Forest management should be adapted to mitigate the possible negative effects of climate change in particular for beech and oak. Although the study area is restricted to the northeastern German lowlands, it is likely that the estimated growth trends for Scots pine and common beech can be extended to similar landscapes in central Europe. In the case of pedunculate oak, a general transfer of our results to other regions is not advisable, since this species is currently affected by a complex interplay of biotic and abiotic pathogens, the so called “oak-decline” (Thomas et al. 2002, Marçais & Desprez-Loustau 2014, Denman et al. 2014). Since our predictions are based on meteorological variables only, the analysis of the impact of other important abiotic or biotic factors potentially affecting the future tree growth may be necessary to obtain a more comprehensive picture of potential future risks on forest vitality due to climate change.

Acknowledgements

AB developed the research idea and wrote the manuscript with input from GJ, TS and BL. AB and GJ performed the statistical analysis. TS and CS collected and prepared the tree-ring data for analysis. BL was involved in the design of the study. All authors were involved in the manuscript revision prior submission. We thank the regional forest management (Landesforstanstalt Mecklenburg-Vorpommern, Germany) for their valuable support during field-work and for the provision of data. The study was financed by the “Exzellenzförderprogramm” of the Ministry of Education, Science and Culture of the Federal State Mecklenburg-Vorpommern – UG 08-035). This study is a contribution to the Virtual Institute of Integrated Climate and Landscape Evolution Analysis -ICLEA- of the Helmholtz Association.

References

Ainsworth EA, Long SP (2005). What have we learned from 15 years of free-air CO₂ enrichment (FACE): A meta-analytic review of the responses of photosynthesis, canopy proper-

ties and plant production to rising CO₂. *New Phytologist* 165: 351-372. - doi: [10.1111/j.1469-8137.2004.01224.x](https://doi.org/10.1111/j.1469-8137.2004.01224.x)

Bauwe A, Koch M, Kallweit R, Konopatzky A, Strohbach B, Lennartz B (2013). Tree-ring growth response of Scots pine (*Pinus sylvestris* L.) to climate and soil water availability in the lowlands of North-Eastern Germany. *Baltic Forestry* 19: 212-225. [online] URL: [http://www.balticforestry.mi.lt/bf/PDF_Articles/2013-19\[2\]/](http://www.balticforestry.mi.lt/bf/PDF_Articles/2013-19[2]/)

Becker M, Nieminen TM, Gérémiá F (1994). Short-term variations and long-term changes in oak productivity in north-eastern France: the role of climate and atmospheric CO₂. *Annals of Forest Science* 51: 477-492. - doi: [10.1051/forest:19940504](https://doi.org/10.1051/forest:19940504)

Beguiría S, Vicente-Serrano SM (2012). SPEI: calculation of the standardised precipitation-evapotranspiration index. R package version 1.2, web site. [online] URL: <http://CRAN.R-project.org/package=SPEI>

Bergès L, Dupouey JL, Franc A (2000). Long-term changes in wood density and radial growth of *Quercus petraea* Liebl. in northern France since the middle of the nineteenth century. *Trees – Structure and Function* 14: 398-408. - doi: [10.1007/s004680000055](https://doi.org/10.1007/s004680000055)

BMELF (2002). Bundeswaldinventur 2 [National Forest Inventory 2]. Bundesministerium für Ernährung, Landwirtschaft und Verbraucherschutz, Berlin, Germany. [online] URL: <http://www.bundeswaldinventur.de>

Bolte A, Ammer C, Löf M, Madsen P, Nabuurs G-J, Schall P, Spathef P, Rock J (2009). Adaptive forest management in central Europe: climate change impacts, strategies and integrative concept. *Scandinavian Journal of Forest Research* 24: 473-482. - doi: [10.1080/02827580903418224](https://doi.org/10.1080/02827580903418224)

Carrer M (2011). Individualistic and time-varying tree-ring growth to climate sensitivity. *PLoS One* 6: e22813. - doi: [10.1371/journal.pone.0022813](https://doi.org/10.1371/journal.pone.0022813)

Cook ER, Kairiukstis LA (1990). Methods of dendrochronology: applications in the environmental sciences. Springer Science+Business Media B.V., The Netherlands, pp. 394. - doi: [10.1007/978-94-015-7879-0](https://doi.org/10.1007/978-94-015-7879-0)

Cook ER, Peters K (1981). The smoothing spline: a new approach to standardizing forest interior tree-ring width series for dendroclimatic studies. *Tree-Ring Bulletin* 41: 45-53. [online] URL: <http://arizona.openrepository.com/arizona/handle/10150/261038>

Cook ER (1985). A time series analysis approach to tree-ring standardization. University of Arizona, Tucson, OK, USA, pp. 171. [online] URL: <http://arizona.openrepository.com/arizona/handle/10150/188110>

Cook ER, Briffa KR, Jones PD (1994). Spatial regression methods in dendroclimatology: a review and comparison of two techniques. *International Journal of Climatology* 14: 379-402. - doi: [10.1002/joc.3370140404](https://doi.org/10.1002/joc.3370140404)

Denman S, Brown N, Kirk S, Jeger M, Webber J (2014). A description of the symptoms of acute oak decline in Britain and a comparative review on causes of similar disorders on oak in Europe. *Forestry* 87: 535-551. - doi: [10.1093/forestry/cpu010](https://doi.org/10.1093/forestry/cpu010)

Dittmar C, Elling W (1999). Radial growth of Norway spruce and European beech in relation to

weather and altitude. *Forstwissenschaftliches Centralblatt* 118: 251-270. - doi: [10.1007/BF02768990](https://doi.org/10.1007/BF02768990)

Dittmar C, Zech W, Elling W (2003). Growth variations of common beech (*Fagus sylvatica* L.) under different climatic and environmental conditions in Europe – a dendroecological study. *Forest Ecology and Management* 173: 63-78. - doi: [10.1016/S0378-1127\(01\)00816-7](https://doi.org/10.1016/S0378-1127(01)00816-7)

Drobyshev I, Niklasson M, Eggertsson O, Linderon H, Sonesson K (2008). Influence of annual weather on growth of Pedunculate oak in southern Sweden. *Annals of Forest Science* 65: 512 (1-14). - doi: [10.1051/forest:2008033](https://doi.org/10.1051/forest:2008033)

EEA (2012). Climate change, impacts and vulnerability in Europe 2012. European Environment Agency Report 12/2012, Copenhagen, Denmark, pp. 253-300. [online] URL: <http://www.envia.bl.uk/handle/123456789/4221>

Ellenberg H, Leuschner C (2010). Vegetation Mitteleuropas mit den Alpen in ökologischer, dynamischer und historischer Sicht [Vegetation ecology of Central Europe]. Ulmer, Stuttgart, Germany, pp. 1357. [in German]

Ellsworth DS (1999). CO₂ enrichment in a maturing pine forest: are CO₂ exchange and water status in the canopy affected? *Plant, Cell and Environment* 22: 461-472. - doi: [10.1046/j.1365-3040.1999.00433.x](https://doi.org/10.1046/j.1365-3040.1999.00433.x)

Friedrichs DA, Trouet V, Büntgen U, Frank DC, Esper J, Neuwirth B, Löffler J (2009a). Species-specific climate sensitivity of tree growth in Central-West Germany. *Trees - Structure and Function* 23: 729-739. - doi: [10.1007/s00468-009-0315-2](https://doi.org/10.1007/s00468-009-0315-2)

Friedrichs DA, Büntgen U, Frank DC, Esper J, Neuwirth B, Löffler J (2009b). Complex climate controls on 20th century oak growth in Central-West Germany. *Tree Physiology* 29: 39-51. - doi: [10.1093/treephys/tpn003](https://doi.org/10.1093/treephys/tpn003)

Fritts HC (1976). Tree rings and climate. Academic Press, London, UK, pp. 329-340.

Girardin MP, Raulier F, Bernier PY, Tardif JC (2008). Response of tree growth to a changing climate in boreal central Canada: a comparison of empirical, process-based, and hybrid modeling approaches. *Ecological Modelling* 213: 209-228. - doi: [10.1016/j.ecolmodel.2007.12.010](https://doi.org/10.1016/j.ecolmodel.2007.12.010)

Goldblum D, Rigg LS (2005). Tree growth response to climate change at the deciduous-boreal forest ecotone, Ontario, Canada. *Canadian Journal of Forest Research* 35: 2709-2718. - doi: [10.1139/x05-185](https://doi.org/10.1139/x05-185)

Grigoryan GV, Casper MC, Gauer J, Vasconcelos AC, Reiter PP (2010). Impact of climate change on water balance of forest sites in Rhineland-Palatinate, Germany. *Advances in Geosciences* 27: 37-43. - doi: [10.5194/adgeo-27-37-2010](https://doi.org/10.5194/adgeo-27-37-2010)

Helama S, Lindholm M, Timonen M, Eronen M (2004). Detection of climate signal in dendrochronological data analysis: a comparison of tree-ring standardization methods. *Theoretical and Applied Climatology* 79: 239-254. - doi: [10.1007/s00704-004-0077-0](https://doi.org/10.1007/s00704-004-0077-0)

Holmes RL (1999). Dendrochronological program library (DPL). Users Manual, web site. [online] URL: <http://www.ltrr.arizona.edu/pub/dpl/>

Huang JG, Bergeron Y, Denneler B, Berninger F, Tardif J (2007). Response of forest trees to increased atmospheric CO₂. *Critical Reviews in*

- Plant Sciences 26: 265-283. - doi: [10.1080/07352680701626978](https://doi.org/10.1080/07352680701626978)
- Härdtle W, Niemeyer T, Assmann T, Baiboks S, Fichtner A, Friedrich U, Lang AC, Neuwirth B, Pfister L, Ries C, Schuldt A, Simon N, Von Oheimb G (2013). Long-term trends in tree-ring width and isotope signatures ($\delta^{13}\text{C}$, $\delta^{15}\text{N}$) of *Fagus sylvatica* L. on soils with contrasting water supply. *Ecosystems* 16: 1413-1428. - doi: [10.1007/s10021-013-9692-x](https://doi.org/10.1007/s10021-013-9692-x)
- IPCC (2007). Climate change 2007: the physical science basis. Contribution of Working Group I to the Fourth Assessment Report of the IPCC (Solomon S, Qin D, Manning M, Chen Z, Marquis M, Averyt KB, Tignor M, Miller HL eds). Cambridge University Press, Cambridge, UK and New York, NY, USA, pp. 18.
- Jump AS, Hunt JM, Peñuelas J (2006). Rapid climate change-related growth decline at the southern range edge of *Fagus sylvatica*. *Global Change Biology* 12: 2163-2174. - doi: [10.1111/j.1365-2486.2006.01250.x](https://doi.org/10.1111/j.1365-2486.2006.01250.x)
- Kelly PM, Leuschner HH, Briffa KR, Harris IC (2002). The climatic interpretation of pan-European signature years in oak ring-width series. *Holocene* 12: 689-694. - doi: [10.1191/0959683602hl582rp](https://doi.org/10.1191/0959683602hl582rp)
- Kint V, Aertsen W, Campioli M, Vansteenkiste D, Delcloc A, Muys B (2012). Radial growth change of temperate tree species in response to altered regional climate and air quality in the period 1901-2008. *Climatic Change* 115: 343-363. - doi: [10.1007/s10584-012-0465-x](https://doi.org/10.1007/s10584-012-0465-x)
- Kreienkamp F, Spekat A, Enke W (2010). Ergebnisse eines regionalen Szenarienlaufs für Deutschland mit dem statistischen Modell WETTREG2010 [Results of a regional scenario run for Germany using the statistical model WETTREG2010]. Umweltbundesamt, Potsdam, Germany, pp. 19-32. [in German]
- Kätzel R, Höppner K (2011). Adaptation strategies in forest management under the conditions of climate change in Brandenburg. *Folia Forestalia Polonica Series A - Forestry* 53: 43-51. [online] URL: <http://depot.ceon.pl/handle/123456789/5435>
- Laroque CP, Smith DJ (2003). Radial-growth forecasts for five high-elevation conifer species on Vancouver Island, British Columbia. *Forest Ecology and Management* 183: 313-325. - doi: [10.1016/S0378-1127\(03\)00110-5](https://doi.org/10.1016/S0378-1127(03)00110-5)
- Laubhann D, Sterba H, Reinds GJ, De Vries W (2009). The impact of atmospheric deposition and climate on forest growth in European monitoring plots: an individual tree growth model. *Forest Ecology and Management* 258: 1751-1761. - doi: [10.1016/j.foreco.2008.09.050](https://doi.org/10.1016/j.foreco.2008.09.050)
- Lebourgeois F, Bréda N, Ulrich E, Granier A (2005). Climate-tree-growth relationships of European beech (*Fagus sylvatica* L.) in the French Permanent Plot Network (RENECOFOR). *Trees - Structure and Function* 19: 385-401. - doi: [10.1007/s00468-004-0397-9](https://doi.org/10.1007/s00468-004-0397-9)
- Lindner M, Bugmann H, Lasch P, Flechsig M, Cramer W (1997). Regional impacts of climatic change on forests in the state of Brandenburg, Germany. *Agricultural and Forest Meteorology* 84: 123-135. - doi: [10.1016/S0168-1923\(96\)02381-7](https://doi.org/10.1016/S0168-1923(96)02381-7)
- Manion PD (1991). *Tree disease concepts* (2nd edn). Prentice-Hall, Upper Saddle River, NJ, USA, pp. 416.
- Martínez-Vilalta J, Lopez BC, Adell N, Badiella L, Ninyerola M (2008). Twentieth century increase of Scots pine radial growth in NE Spain shows strong climate interactions. *Global Change Biology* 14: 2868-2881. - doi: [10.1111/j.1365-2486.2008.01685.x](https://doi.org/10.1111/j.1365-2486.2008.01685.x)
- Marçais B, Desprez-Loustau M-L (2014). European oak powdery mildew: impact on trees, effects of environmental factors, and potential effects of climate change. *Annals of Forest Science* 71: 633-642. - doi: [10.1007/s13595-012-0252-x](https://doi.org/10.1007/s13595-012-0252-x)
- McKee TBN, Doesken J, Kleist J (1993). The relationship of drought frequency and duration to time scales. In: Proceedings of the "8th Conference on Applied Climatology". Anaheim (CA, USA) 17-22 Jan 1993. American Meteorological Society, Anaheim, CA, USA, pp. 179-184. [online] URL: <http://ccc.atmos.colostate.edu/relationshipofdroughtfrequency.pdf>
- Orlowsky B, Seneviratne SI (2012). Global changes in extreme events: regional and seasonal dimension. *Climatic Change* 110: 669-696. - doi: [10.1007/s10584-011-0122-9](https://doi.org/10.1007/s10584-011-0122-9)
- Pasho E, Camarero JJ, De Luis M, Vicente-Serrano SM (2011). Impacts of drought at different time scales on forest growth across a wide climatic gradient in north-eastern Spain. *Agricultural and Forest Meteorology* 151: 1800-1811. - doi: [10.1016/j.agrformet.2011.07.018](https://doi.org/10.1016/j.agrformet.2011.07.018)
- Piovesan G, Biondi F, Di Filippo A, Alessandrini A, Maugeri M (2008). Drought-driven growth reduction in old beech (*Fagus sylvatica* L.) forests of the central Apennines, Italy. *Global Change Biology* 14: 1265-1281. - doi: [10.1111/j.1365-2486.2008.01570.x](https://doi.org/10.1111/j.1365-2486.2008.01570.x)
- Pretzsch H (1996). Growth trends of forests in southern Germany. In: "Growth Trends in European Forests" (Spiecker H, Mielikäinen K, Köhl M, Skovsgaard J eds). Springer, Berlin, Germany, pp. 107-131. - doi: [10.1007/978-3-642-61178-0_11](https://doi.org/10.1007/978-3-642-61178-0_11)
- Pretzsch H, Schütze G, Uhl E (2013). Resistance of European tree species to drought stress in mixed versus pure forests: evidence of stress release by inter-specific facilitation. *Plant Biology* 15: 483-495. - doi: [10.1111/j.1438-8677.2012.0670.x](https://doi.org/10.1111/j.1438-8677.2012.0670.x)
- Pérez PJ, Kahle HP, Spiecker H (2005). Growth trends and relationships with environmental factors for scots pine [*Pinus sylvestris* (L.)] in Brandenburg. *Investigación Agraria: Sistemas y Recursos Forestales* 14: 64-78. - doi: [10.5424/srf/2005141-00874](https://doi.org/10.5424/srf/2005141-00874)
- R Development Core Team (2011). R: a language and environment for statistical computing. R Foundation for Statistical Computing, Vienna. [online] URL: <http://www.R-project.org/>
- Rathgeber CBK, Misson L, Nicault A, Guiot J (2005). Bioclimatic model of tree radial growth: application to the French Mediterranean Aleppo pine forests. *Trees - Structure and Function* 19: 162-176. - doi: [10.1007/s00468-004-0378-z](https://doi.org/10.1007/s00468-004-0378-z)
- Reich PB, Oleksyn J (2008). Climate warming will reduce growth and survival of Scots pine except in the far north. *Ecological Letters* 11: 588-597. - doi: [10.1111/j.1461-0248.2008.01172.x](https://doi.org/10.1111/j.1461-0248.2008.01172.x)
- Rinn F (2003). TSAP-Win: time series analysis and presentation for dendrochronology and related applications. Version 0.59 for Microsoft Windows, Rinntech, Heidelberg, Germany.
- Roeckner E, Bäuml G, Bonaventura L, Brokopf R, Esch M, Giorgetta M, Hagemann S, Kirchner I, Kornblüeh L, Manzini E, Rhodin A, Schlese U, Schulzweida U, Tompkins A (2003). The atmospheric general circulation model ECHAM5 - Part I: Model description, Tech. Rep. 349. Max-Planck-Institut für Meteorologie, Hamburg, Germany, pp. 127. [online] URL: <http://hdl.handle.net/11858/00-001M-0000-0012-0144-5>
- Scharnweber T, Manthey M, Criegee C, Bauwe A, Schröder C, Wilmking M (2011). Drought matters - declining precipitation influences growth of *Fagus sylvatica* L. and *Quercus robur* L. in north-eastern Germany. *Forest Ecology and Management* 262: 947-961. - doi: [10.1016/j.foreco.2011.05.026](https://doi.org/10.1016/j.foreco.2011.05.026)
- Scharnweber T, Manthey M, Wilmking M (2013). Differential radial growth patterns between beech (*Fagus sylvatica* L.) and oak (*Quercus robur* L.) on periodically waterlogged soils. *Tree Physiology* 33: 425-437. - doi: [10.1093/treephys/tpt020](https://doi.org/10.1093/treephys/tpt020)
- Schmidtlein S, Feilhauer H, Bruehlheide H (2012). Mapping plant strategy types using remote sensing. *Journal of Vegetation Science* 23: 395-604. - doi: [10.1111/j.1654-1103.2011.01370.x](https://doi.org/10.1111/j.1654-1103.2011.01370.x)
- Solberg S, Andreassen K, Clarke N, Torseth K, Tveito OE, Strand GH, Tomter S (2004). The possible influence of nitrogen and acid deposition on forest growth in Norway. *Forest Ecology and Management* 192: 241-249. - doi: [10.1016/j.foreco.2004.01.036](https://doi.org/10.1016/j.foreco.2004.01.036)
- Takahashi K, Okuhara I (2013). Forecasting the effects of global warming on radial growth of subalpine trees at the upper and lower distribution limits in central Japan. *Climatic Change* 117: 273-287. - doi: [10.1007/s10584-012-0547-9](https://doi.org/10.1007/s10584-012-0547-9)
- Tegel W, Seim A, Hakelberg D, Hoffmann S, Panev M, Westphal T, Büntgen U (2014). A recent growth increase of European beech (*Fagus sylvatica* L.) at its Mediterranean distribution limit contradicts drought stress. *European Journal of Forest Research* 133: 61-71. - doi: [10.1007/s10342-013-0737-7](https://doi.org/10.1007/s10342-013-0737-7)
- Thomas M, Blank R, Hartmann G (2002). Abiotic and biotic factors and their interactions as causes of oak decline in Central Europe. *Forest Pathology* 32: 277-307. - doi: [10.1046/j.1439-0329.2002.00291.x](https://doi.org/10.1046/j.1439-0329.2002.00291.x)
- Thorntwaite CW (1948). An approach toward a rational classification of climate. *Geographical Review* 38: 55-94. - doi: [10.2307/210739](https://doi.org/10.2307/210739)
- Van der Schrier G, Briffa KR, Jones PD, Osborn TJ (2006). Summer moisture variability across Europe. *Journal of Climate* 19: 2818-2834. - doi: [10.1175/JCLI3734.1](https://doi.org/10.1175/JCLI3734.1)
- Vicente-Serrano SM, Beguería S, López-Moreno JI (2010). A multiscale drought index sensitive to global warming. The standardized precipitation evapotranspiration index. *Journal of Climate* 23: 1696-1718. - doi: [10.1175/2009JCLI2909.1](https://doi.org/10.1175/2009JCLI2909.1)
- Vicente-Serrano SM, Camarero JJ, Azorin-Molina C (2014). Diverse responses of forest growth to drought time-scales in the Northern Hemisphere. *Global Ecology and Biogeography* 23: 1019-1030. - doi: [10.1111/geb.12183](https://doi.org/10.1111/geb.12183)
- Von Lührte A (1991). Dendroökologische Untersuchungen an Kiefern und Eichen in den stadtnahen Berliner Forsten [Dendroecological investigations of pines and oaks in the urban fo-

rests of Berlin]. Landschaftsentwicklung und Umweltforschung. Schriftenreihe des Fachbereichs Landschaftsentwicklung der TU Berlin 77, Germany, pp. 186. [in German]

Weber P, Bugmann H, Pluess AR, Walthert L, Rigling A (2013). Drought response and changing mean sensitivity of European beech close to the dry distribution limit. *Trees - Structure and Function* 27: 171-181. - doi: [10.1007/s00468-012-0786-4](https://doi.org/10.1007/s00468-012-0786-4)

Wigley TML, Briffa KR, Jones PD (1984). On the average value of correlated time-series, with applications in dendroclimatology and hydro-meteorology. *Journal of Climate and Applied*

Meteorology 23: 201-213. - doi: [10.1175/1520-0450\(1984\)023<0201:OTAVOC>2.0.CO;2](https://doi.org/10.1175/1520-0450(1984)023<0201:OTAVOC>2.0.CO;2)

Wold S, Sjöström M, Eriksson L (2001). PLS-regression: a basic tool of chemometrics. *Chemometrics and Intelligent Laboratory Systems* 58: 109-130. - doi: [10.1016/S0169-7439\(01\)00155-1](https://doi.org/10.1016/S0169-7439(01)00155-1)

WRB (2006). World reference base for soil resources 2006. A framework for international classification, correlation and communication. World Soil Resources Reports No. 103, FAO, Rome, Italy, pp. 128.

Supplementary Material

Appendix 1

Fig. S1 – Comparison of different detrending methods for the (prewhitened) residual chronologies.

Tab. S1 – Statistics of (prewhitened) residual chronologies.

Link: Bauwe_1421@suppl001.pdf