

Supplementary Material

Fig. S1 - Relationship between carbon content in the wood of snags and time since tree dieback (a) and stem diameter (b).

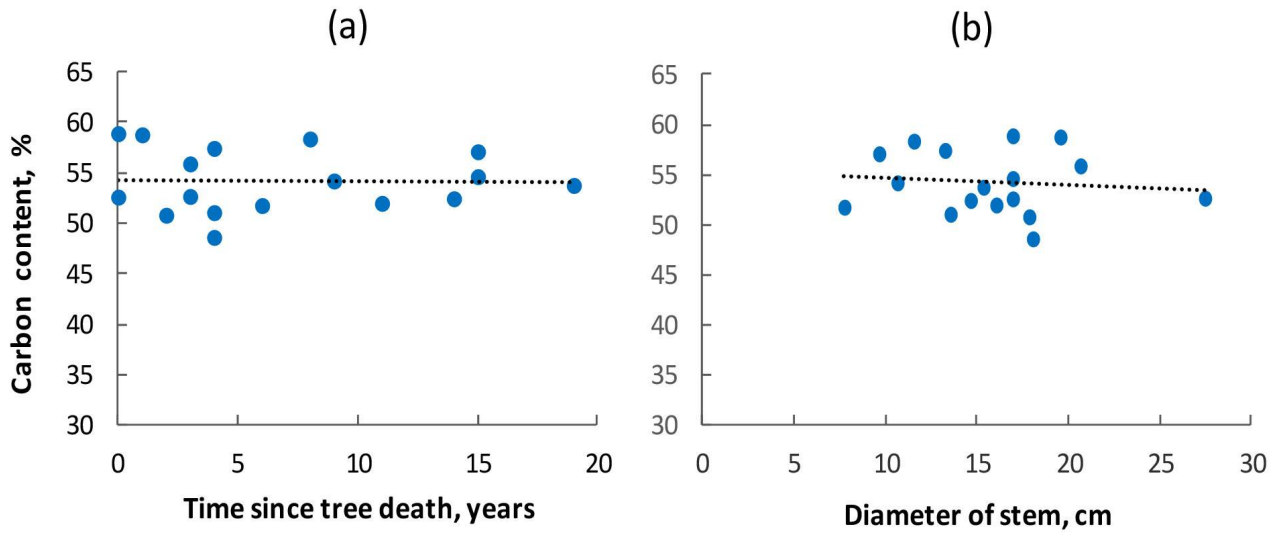


Fig. S2 - The structure of the stock of logs on the sample plots: DC I, DC II, DC III – classes of decomposition; E1, E2, K3, E4 – sample plots with different level of damage by *P. proximus*.

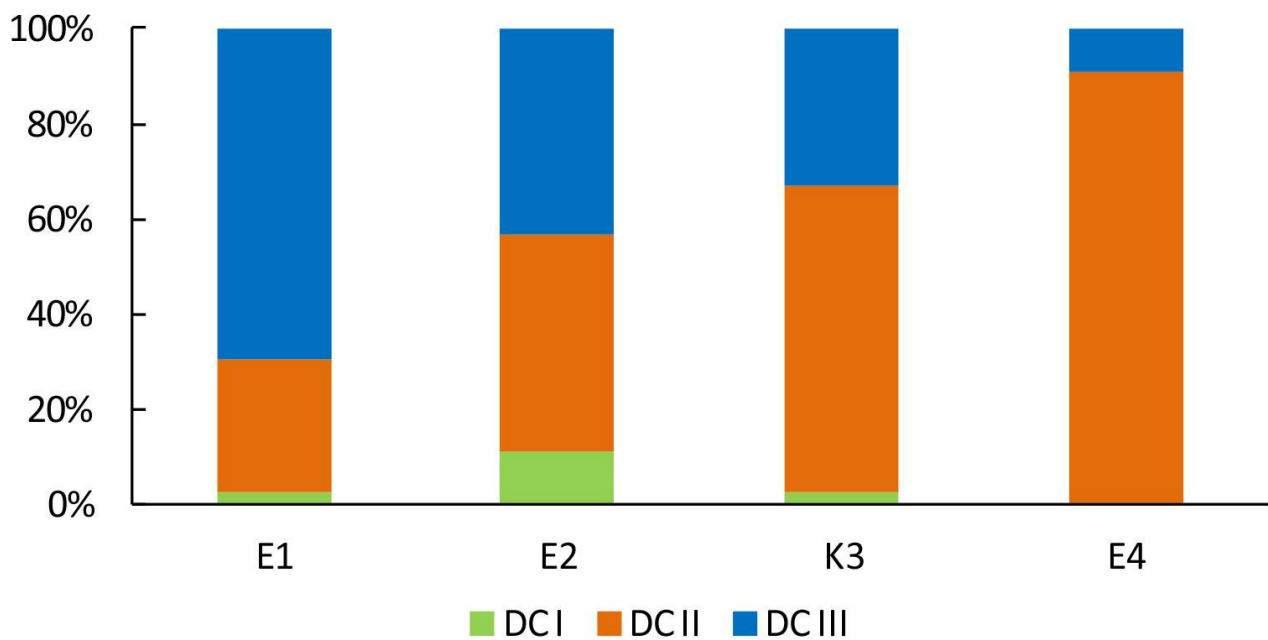


Fig. S3 - Structure of the stump pool: DC I, DC II, DC III - classes of decomposition; E1, E2, K3, E4 - sample plots with different levels of damage by *P. proximus*.

