

Supplementary Material

Fig. S1 - Climate records from the three meteorological stations used in this study. PA: annual precipitation of Aldea, PN: annual precipitation of Navacerrada, PL: annual precipitation of Linares. TA: mean annual temperature of Aldea, TN: mean annual temperature of Navacerrada, TL: mean annual temperature of Linares and its lineal trends in solid line.

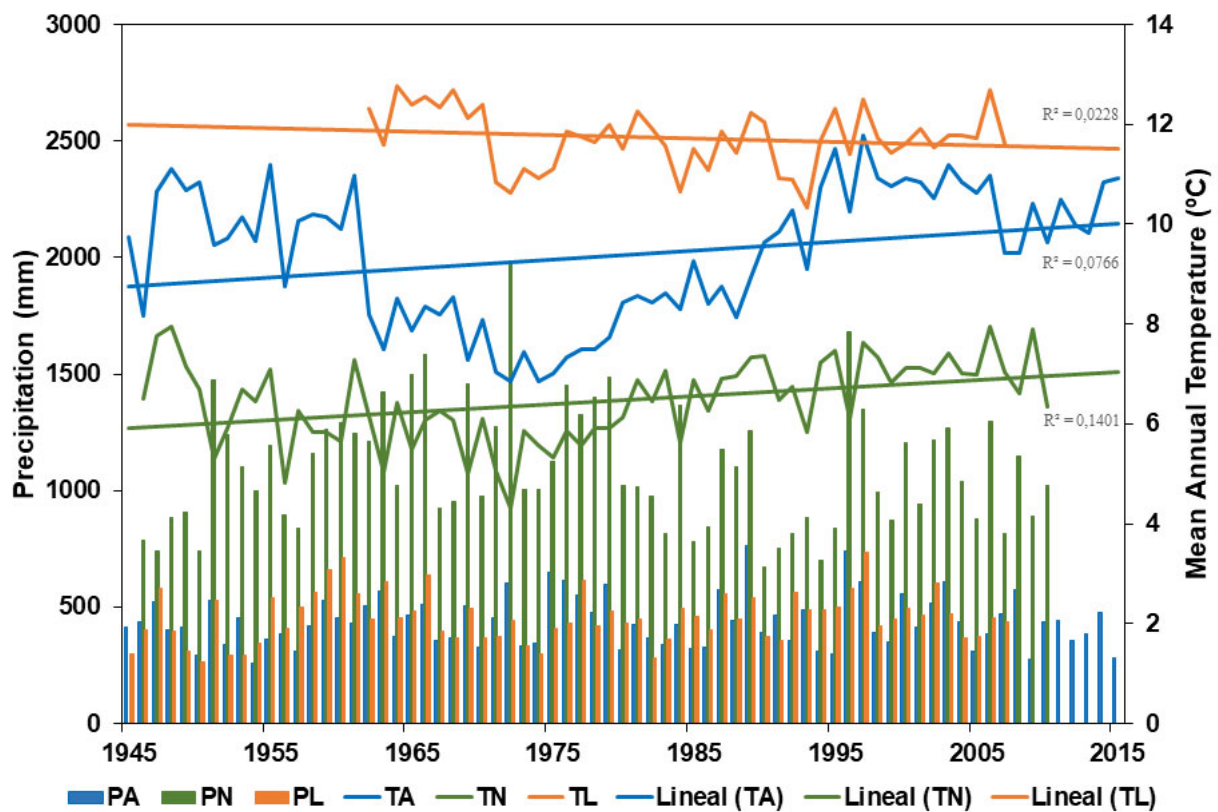


Fig. S2 - Correlation values of partial residual chronologies to mean monthly temperature and monthly precipitation of the nearest meteorological record. The window starts in August of the previous year (upper case) and ends in October of the current year (lower case), every 2 months are indicated in abscissas. RU trees (green line), RT trees (violet line), and average (blue line) climate response. The black lines indicate the significance level ($p < 0.05$). a) VEN-site/ Aldea del Rey Niño (Ávila); b) ALM-site/ Aldea del Rey Niño (Ávila); c) JAR-site/ Navacerrada (Madrid) and d) HOR-site/ Linares del Arroyo (Segovia).

