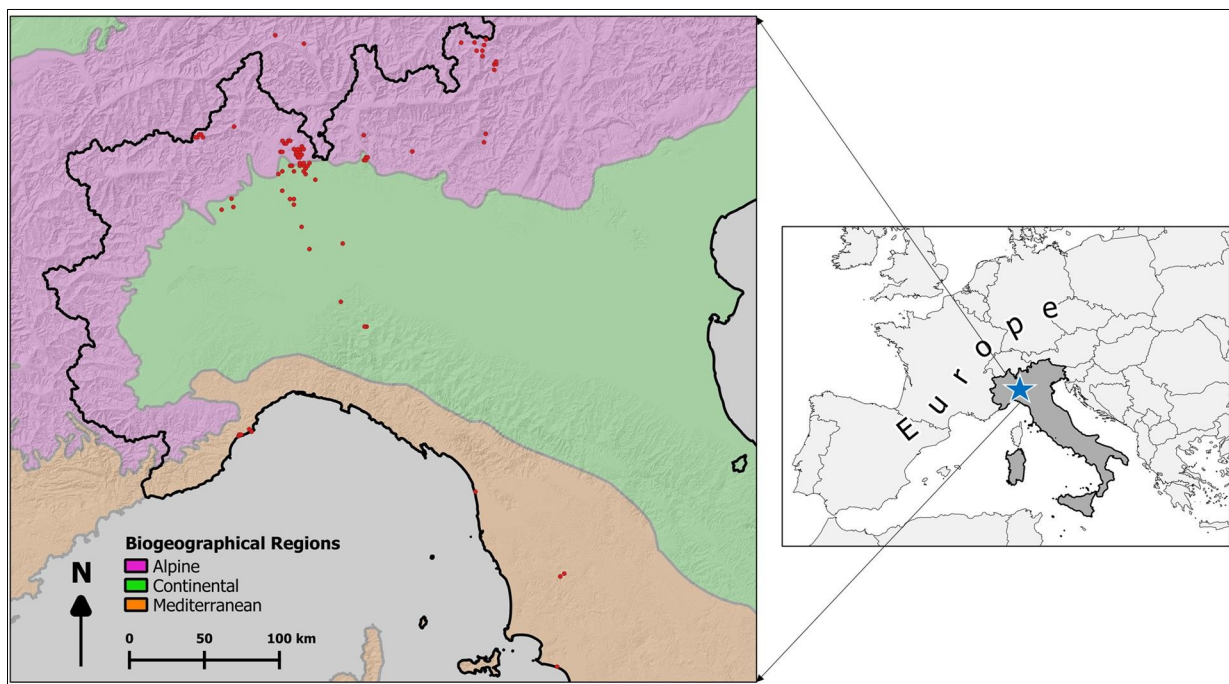
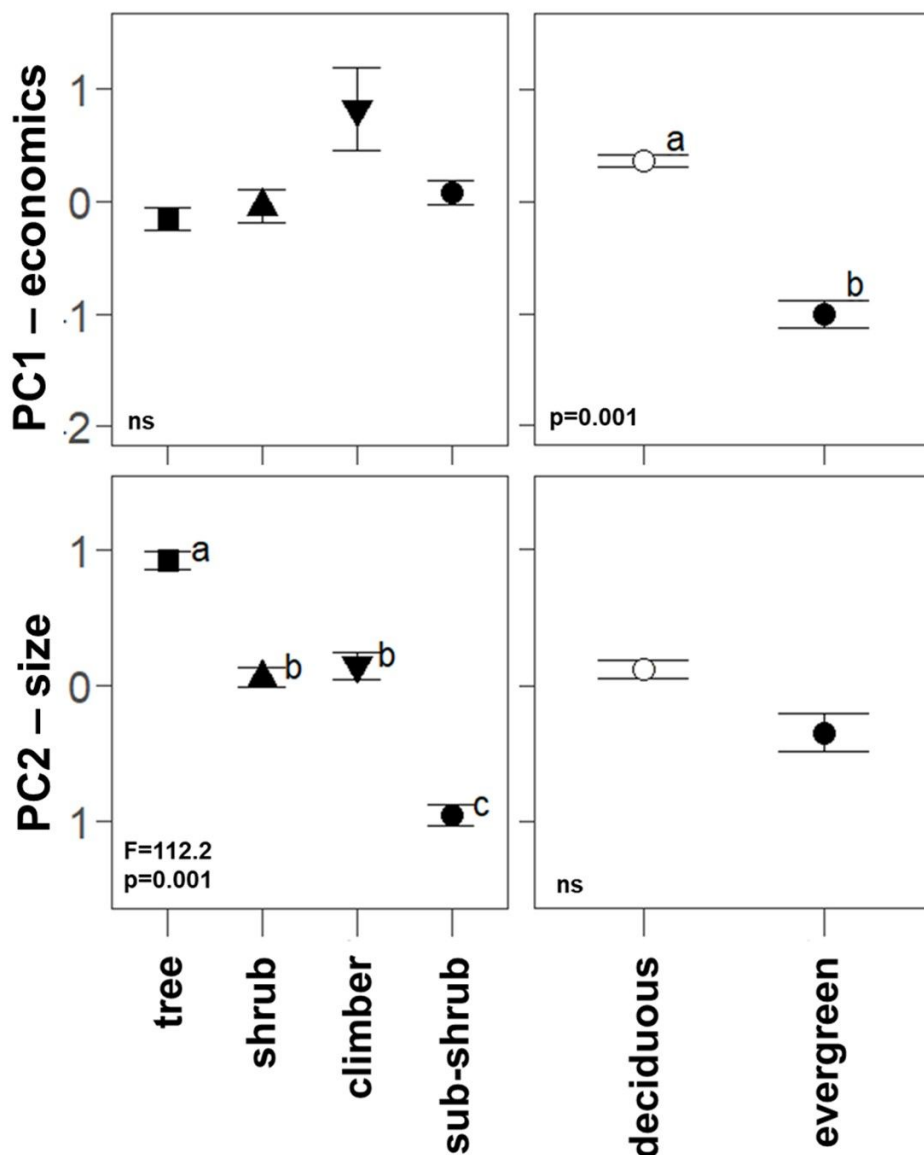


## Supplementary Material

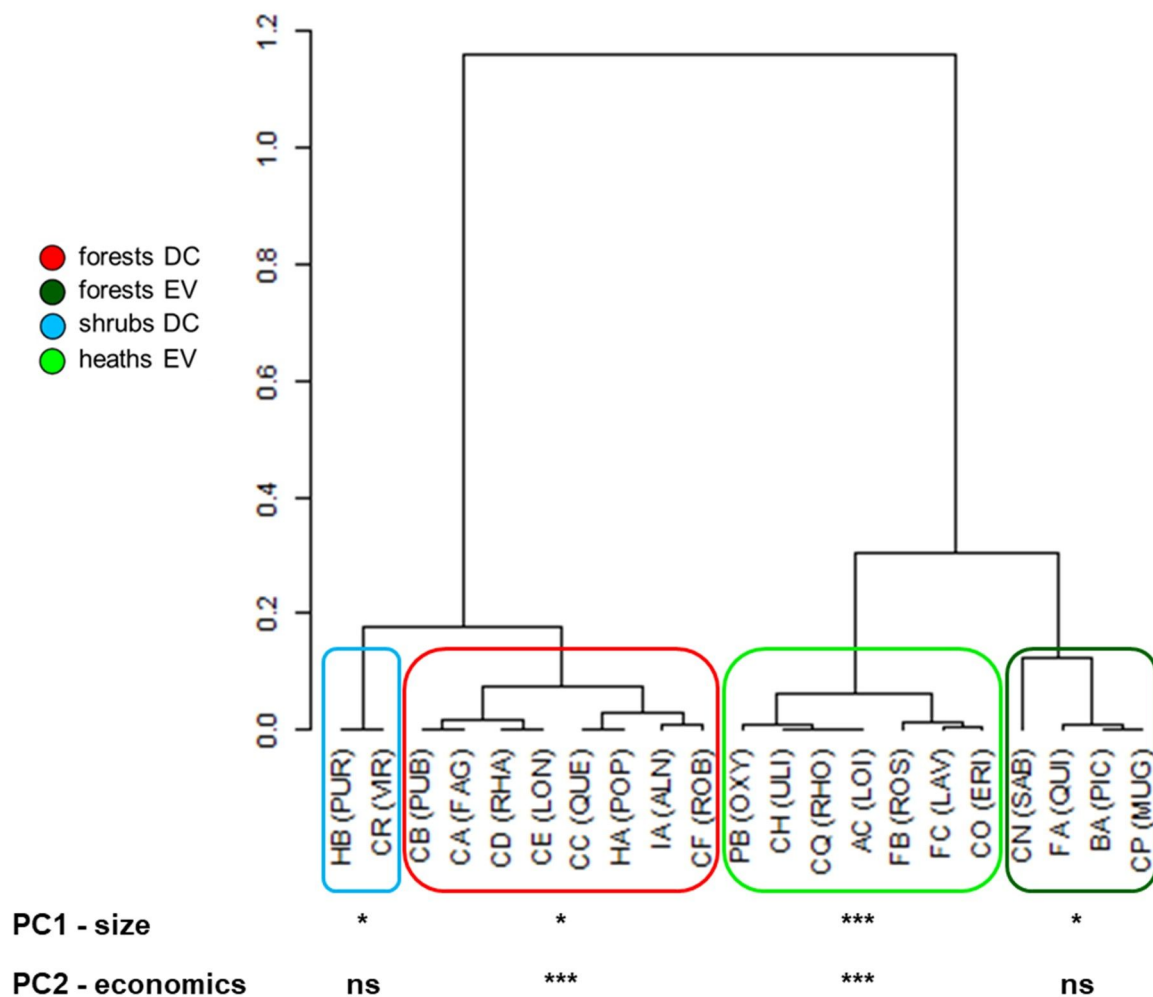
**Fig. S1** - Distribution of the 89 sampling sites, over three biogeographical regions of Europe (Alpine, Continental and Mediterranean - EEA, <https://www.eea.europa.eu/data-and-maps/figures/biogeographical-regions-in-europe-2>).



**Fig. S2** - Mean values ( $\pm$  se) of the scores of growth forms (left panels) and leaf life span (right panels) along the two axes of the principal component analysis (PC1 and PC2). Results of the phylogenetic ANOVA are also reported in each subplot; small letters indicate post-hoc comparisons.



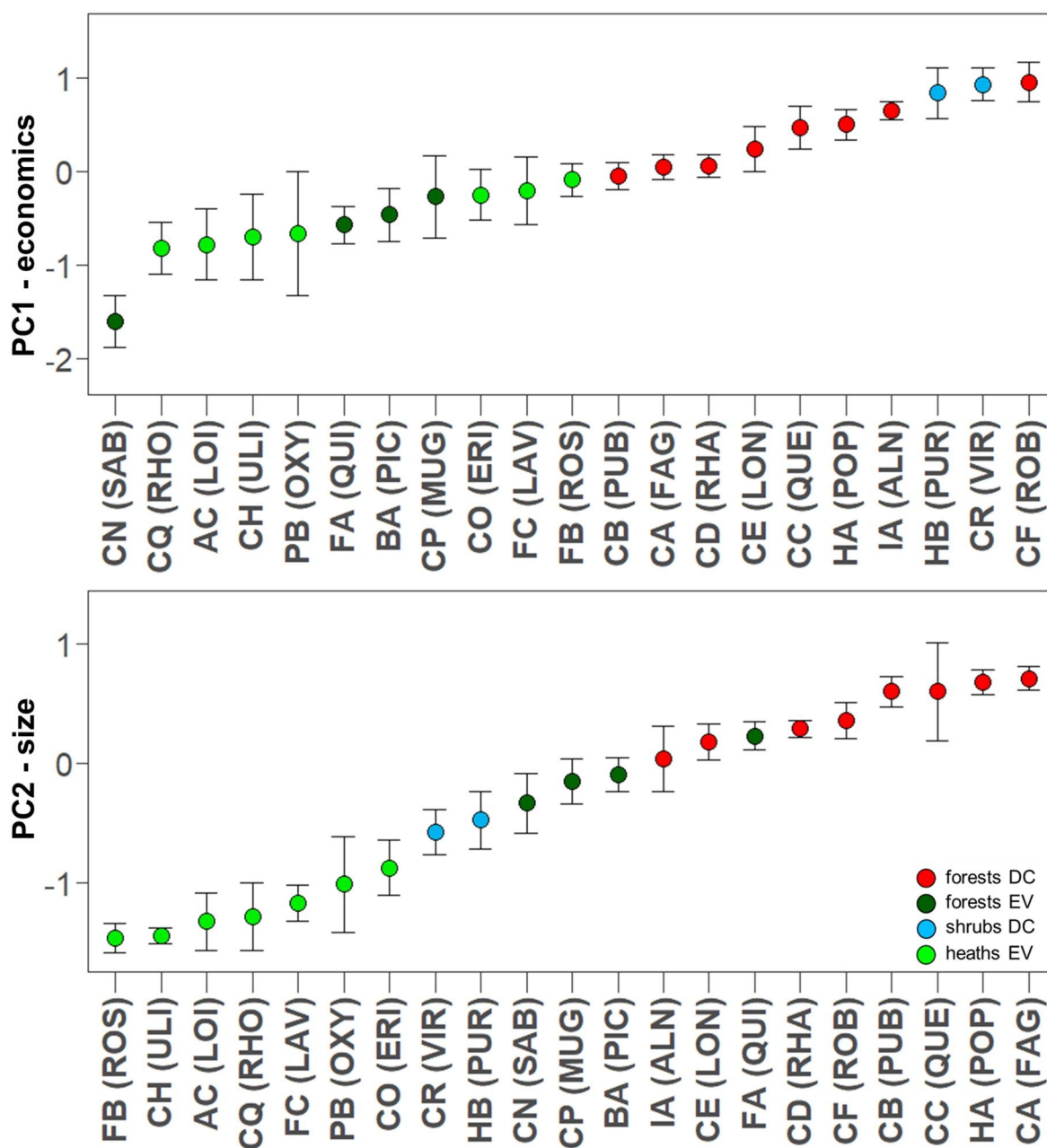
**Fig. S3** - Dendrogram resulting from the Hierarchical Clustering on the mean values of Principal Components (PC1 and PC2) of diagnostic species of each class of European woody vegetation. Both axes contributed significantly ( $p < 0.001$ ) to the clustering at  $k = 4$ , respectively  $Eta2 = 0.92$  and  $0.72$ . The significance ( $p$ -value) of the contribution to each cluster by PC1 and PC2 is also reported in the figure. Classes (full names are reported in Tab. 1) are grouped into evergreen heaths and scrubs (light green), deciduous shrublands (light blue), evergreen forests (dark green) and deciduous forests (red). Legend: DC = deciduous, EV = evergreen, ns = not significant, \* =  $p \leq 0.05$ , \*\* =  $p \leq 0.01$ , \*\*\* =  $p \leq 0.001$ .



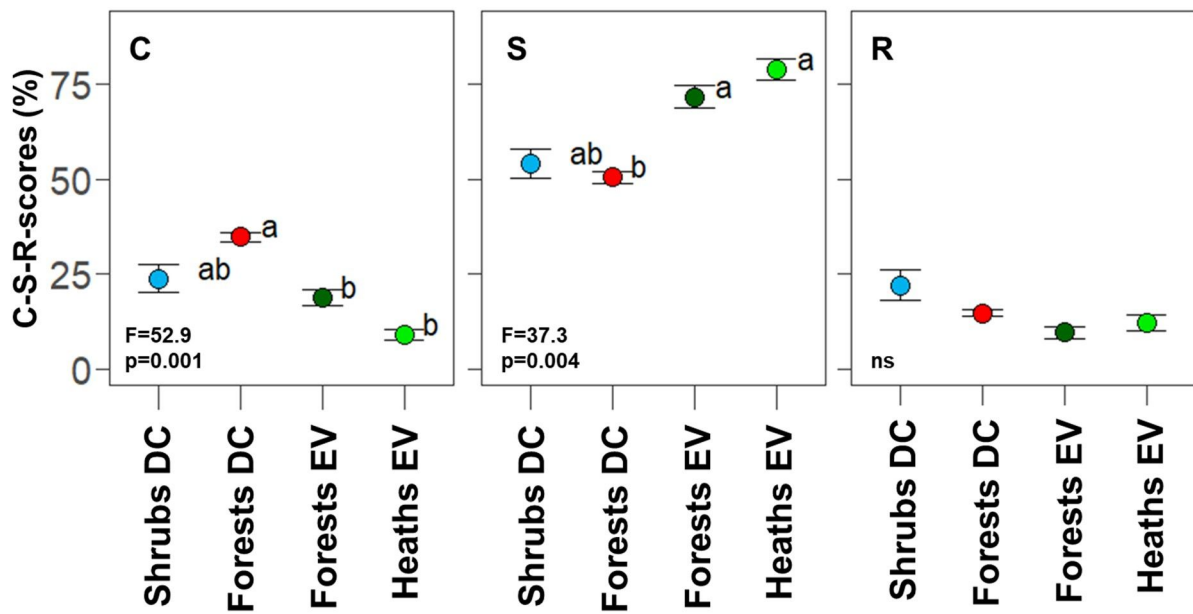
**Towards a functional phytosociology: the functional ecology of woody diagnostic species and their vegetation classes in Northern Italy**

iForest – Biogeosciences and Forestry – doi: [10.3832/ifor3730-014](https://doi.org/10.3832/ifor3730-014)

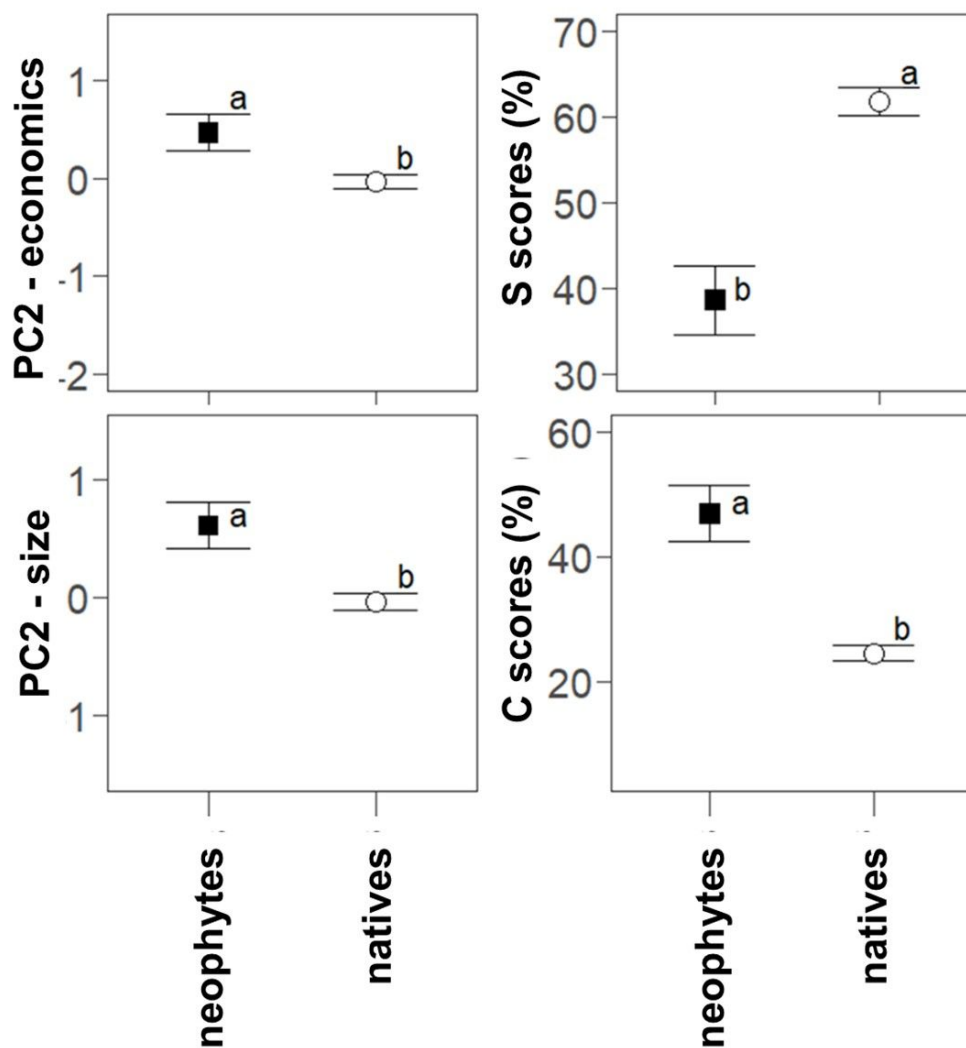
**Fig. S4** - Mean values ( $\pm$  SE) of the scores of classes (full names are reported in Tab. 1) along the two axes of the principal component analysis (PC1 and PC2), grouped into evergreen heaths and scrubs (light green), deciduous shrublands (light blue), evergreen forests (dark green) and deciduous forests (red).



**Fig. S5** - Mean values ( $\pm$  SE) of classes along C-, S- and R-scores. Results of the phylogenetic ANOVA are also reported in each subplot; small letters indicate *post-hoc* comparisons.



**Fig. S6** - Mean values ( $\pm$  SE) of the scores of neophyte species and the native species considered along the two axes of the principal component analysis (PC1 and PC2) and C-, and S- scores. For each subplot, differences were always significantly different at  $p < 0.001$  according to the phylogenetic ANOVA; R- scores did not show significant differences and are not shown.



**Towards a functional phytosociology: the functional ecology of woody diagnostic species and their vegetation classes in Northern Italy**iForest – Biogeosciences and Forestry – doi: [10.3832/ifor3730-014](https://doi.org/10.3832/ifor3730-014)

**Tab. S1** - List of the 89 sampling sites (see also Fig. S1) with their coordinates and their properties in relation to elevation, biogeographical regions of Europe (EEA, <https://www.eea.europa.eu/data-and-maps/figures/biogeographical-regions-in-europe-2>), land units of Italy (Smiraglia et al. 2013), and main bioclimatic indices of Italy (Pesaresi et al. 2017). For the two sampling sites located in Switzerland, both land units and bioclimatic indices are based on Authors knowledge.

ID	Latitude (N)	Longitude (E)	Altitude (m a.s.l.)	Province	Location	land units (Smiraglia et al 2013)	Bioclimate (Pesaresi et al 2017)	continentality type	ombrotypes	thermotypes
1	45° 52' 09"	09° 46'	1864	BG	Alben	carbonate sedimentary - slope	10 - Temperate Oceanic	10 – Oceanic – Euoceanic weak	2 - Hyperumid upper	21 - Orotemperate lower
2	45° 31' 08"	08° 08'	320	BI	Candelo	terraced clastic sedimentary - piedmont slope	10 - Temperate Oceanic	12 – Oceanic – Semicontinental strong	4 - Humid upper	19 - Supratemperate lower
3	45° 35' 08"	08° 13'	283	BI	Masserano	clastic sedimentary - table land	10 - Temperate Oceanic	12 – Oceanic – Semicontinental strong	4 - Humid upper	19 - Supratemperate lower
4	45° 55' 10"	23° 23'	1903	BS	Bagolino-Bazena	clastic sedimentary - valley	10 - Temperate Oceanic	10 - Oceanic – Euoceanic weak	2 - Hyperumid upper	21 - Orotemperate lower
5	45° 58' 10"	24° 24'	1700	BS	Braone	intrusive igneous - valley	10 - Temperate Oceanic	9 - Oceanic - Euoceanic strong	2 - Hyperumid upper	22 - Orotemperate upper
6	46° 31' 08"	50° 50'	1650	Swi ss	Lucomagno	<i>intrusive igneous -slope</i>	<i>10 - Temperate Oceanic</i>	<i>8 - Oceanic - Semihyperoceanic weak</i>	<i>1 - Ultrahyperhumid</i>	<i>23 - Cryotemperate lower</i>
7	46° 34' 08"	35° 2440'	2440	Swi ss	S.Gottardo	<i>intrusive igneous -slope</i>	<i>10 - Temperate Oceanic</i>	<i>8 - Oceanic - Semihyperoceanic weak</i>	<i>1 - Ultrahyperhumid</i>	<i>23 - Cryotemperate lower</i>
8	42° 45' 10"	54° 3'	3	GR	Castiglione della Pescaia	clastic sedimentary - coast	1 - Mediterranean Pluviseasonal Oceanic	10 - Oceanic - Euoceanic weak	8 - Dry upper	5 - Mesomediterranean lower
12	45° 50' 09"	23° 375'	375	LC	Monte Barro (San Michele)	carbonate sedimentary - slope	10 - Temperate Oceanic	12 - Oceanic - Semicontinental strong	3 - Hyperumid lower	19 - Supratemperate lower
9	45° 49' 09"	21° 380'	380	LC	Monte Barro (cava Valle Oscura)	carbonate sedimentary - slope	10 - Temperate Oceanic	12 - Oceanic - Semicontinental strong	4 - Humid upper	19 - Supratemperate lower
10	45° 49' 09"	22° 744'	744	LC	Monte Barro (Eremo)	carbonate sedimentary - slope	10 - Temperate Oceanic	12 - Oceanic - Semicontinental strong	4 - Humid upper	19 - Supratemperate lower
11	45° 50' 09"	22° 815'	815	LC	Monte Barro (Pra della Corna)	carbonate sedimentary - plain	10 - Temperate Oceanic	12 - Oceanic - Semicontinental strong	4 - Humid upper	19 - Supratemperate lower



**Towards a functional phytosociology: the functional ecology of woody diagnostic species and their vegetation classes in Northern Italy**iForest – Biogeosciences and Forestry – doi: [10.3832/ifer3730-014](https://doi.org/10.3832/ifer3730-014)

ID	Latitude (N)	Longitude (E)	Altitude (m a.s.l.)	Province	Location	land units (Smiraglia et al 2013)	Bioclimate (Pesaresi et al 2017)	continentality type	ombrotypes	thermotypes
13	45° 58' 09"	21° 09' 21"	1780	LC	Monte Croce	carbonate sedimentary - slope	10 - Temperate Oceanic	10 - Oceanic - Euoceanic weak	2 - Hyperumid upper	21 - Orotemperate lower
14	43° 49' 10"	15° 10' 15"	2	LU	Torre del Lago	clastic sedimentary - coast	1 - Mediterranean Pluvio-seasonal Oceanic	10 - Oceanic - Euoceanic weak	6 - Subhumid upper	5 - Mesomediterranean lower
16	45° 25' 08"	08° 49' 49"	111	MI	Magenta (La Fagiana)	clastic sedimentary - plain	11 - Temperate Continental	13 - Continental - Subcontinental weak	5 - Humid lower	18 - Mesotemperate upper
17	45° 33' 08"	08° 45' 186	MI	Castano Primo	terraced clastic sedimentary - plain	11 - Temperate Continental	13 - Continental - Subcontinental weak	5 - Humid lower	18 - Mesotemperate upper	
15	45° 19' 09"	10° 09' 10"	94	MI	Lacchiarella	terraced clastic sedimentary - plain	11 - Temperate Continental	13 - Continental - Subcontinental weak	6 - Subhumid upper	18 - Mesotemperate upper
18	44° 49' 09"	09° 22' 850	PC	Pecorara (loc. Cicogni)	terrigenous sedimentary - slope	10 - Temperate Oceanic	11 - Oceanic - Semicontinental weak	4 - Humid upper	20 - Supratemperate upper	
20	44° 58' 09"	09° 09' 295	PV	Calvignano loc. bosco Ceresino	terrigenous sedimentary - valley	11 - Temperate Continental	13 - Continental - Subcontinental weak	6 - Subhumid upper	18 - Mesotemperate upper	
21	45° 17' 08"	08° 53' 101	PV	Vigevano (Sforzesca)	terraced clastic sedimentary - plain	11 - Temperate Continental	13 - Continental - Subcontinental weak	6 - Subhumid upper	18 - Mesotemperate upper	
19	44° 49' 09"	09° 21' 900	PV	Romagnese (Pietra Corva)	terrigenous sedimentary - piedmont slope	10 - Temperate Oceanic	11 - Oceanic - Semicontinental weak	4 - Humid upper	20 - Supratemperate upper	
22	43° 18' 10"	10° 57' 270	SI	Casole d'Elsa	clastic sedimentary - slope	10 - Temperate Oceanic	11 - Oceanic - Semicontinental weak	6 - Subhumid upper	17 - Mesotemperate lower	
23	43° 19' 10"	10° 59' 250	SI	Casole d'Elsa	clastic sedimentary - piedmont slope	10 - Temperate Oceanic	11 - Oceanic - Semicontinental weak	6 - Subhumid upper	17 - Mesotemperate lower	
30	46° 28' 10"	10° 23' 1335	SO	Uzza	clastic sedimentary - piedmont slope	10 - Temperate Oceanic	11 - Oceanic - Semicontinental weak	5 - Humid lower	21 - Orotemperate lower	
27	46° 24' 10"	10° 30' 1752	SO	Santa Caterina Valfurva	metamorphic - piedmont slope	10 - Temperate Oceanic	9 - Oceanic - Euoceanic strong	3 - Hyperumid lower	22 - Orotemperate upper	
33	46° 31' 10"	10° 19' 2000	SO	Valdidentro (loc. Grasso di Solena)	carbonate sedimentary - piedmont slope	10 - Temperate Oceanic	10 - Oceanic - Euoceanic weak	3 - Hyperumid lower	22 - Orotemperate upper	
28	46° 26' 10"	10° 23' 1955	SO	Bormio 2000	metamorphic - valley	10 - Temperate Oceanic	10 - Oceanic - Euoceanic weak	4 - Humid upper	22 - Orotemperate upper	



**Towards a functional phytosociology: the functional ecology of woody diagnostic species and their vegetation classes in Northern Italy**iForest – Biogeosciences and Forestry – doi: [10.3832/ifer3730-014](https://doi.org/10.3832/ifer3730-014)

ID	Latitude (N)	Longitude (E)	Altitude (m a.s.l.)	Province	Location	land units (Smiraglia et al 2013)	Bioclimate (Pesaresi et al 2017)	continentality type	ombrotypes	thermotypes
29	46° 28'	10° 20'	1712	SO	Oga (Paluaccio)	clastic sedimentary - slope	10 - Temperate Oceanic	10 - Oceanic - Eucoceanic weak	4 - Humid upper	22 - Orotemperate upper
24	46° 21'	10° 29'	2650	SO	Passo di Gavia	metamorphic - slope	10 - Temperate Oceanic	8 - Oceanic - Semihyperoceanic weak	1 - Ultrahyperh umid	23 - Cryotemperate lower
25	46° 23'	10° 29'	2275	SO	Passo di Gavia	metamorphic - valley	10 - Temperate Oceanic	8 - Oceanic - Semihyperoceanic weak	1 - Ultrahyperh umid	23 - Cryotemperate lower
26	46° 23'	10° 30'	2050	SO	Santa Caterina Valfurva	metamorphic - piedmont slope	10 - Temperate Oceanic	8 - Oceanic - Semihyperoceanic weak	1 - Ultrahyperh umid	23 - Cryotemperate lower
31	46° 30'	10° 24'	2160	SO	Valle dei Vitelli	clastic sedimentary - slope	10 - Temperate Oceanic	8 - Oceanic - Semihyperoceanic weak	1 - Ultrahyperh umid	23 - Cryotemperate lower
32	46° 31'	10° 12'	2160	SO	Val Pila	metamorphic - slope	10 - Temperate Oceanic	8 - Oceanic - Semihyperoceanic weak	1 - Ultrahyperh umid	23 - Cryotemperate lower
34	46° 32'	10° 25'	2580	SO	Stelvio (pendici Monte Umbrail)	carbonate sedimentary - slope	10 - Temperate Oceanic	8 - Oceanic - Semihyperoceanic weak	1 - Ultrahyperh umid	23 - Cryotemperate lower
35	44° 09'	08° 18'	18	SV	Finale Ligure	clastic sedimentary - coast	1 - Mediterranean Pluviseasonal Oceanic	10 - Oceanic - Eucoceanic weak	7 - Subhumid lower	5 - Mesomediterranea n lower
36	44° 10'	08° 18'	305	SV	Finale Ligure (Gorra)	carbonate sedimentary - slope	1 - Mediterranean Pluviseasonal Oceanic	10 - Oceanic - Eucoceanic weak	7 - Subhumid lower	5 - Mesomediterranea n lower
37	44° 10'	08° 19'	52	SV	Finale Ligure (Borgo)	carbonate sedimentary - slope	1 - Mediterranean Pluviseasonal Oceanic	10 - Oceanic - Eucoceanic weak	6 - Subhumid upper	6 - Mesomediterranea n upper
38	44° 11'	08° 25'	40	SV	Noli (Capo Noli)	carbonate sedimentary - coast	10 - Temperate Oceanic	10 - Oceanic - Eucoceanic weak	6 - Subhumid upper	17 - Mesotemperate lower
39	44° 12'	08° 23'	300	SV	Voze	carbonate sedimentary - plain	10 - Temperate Oceanic	10 - Oceanic - Eucoceanic weak	6 - Subhumid upper	17 - Mesotemperate lower
60	45° 51'	08° 46'	1140	VA	Campo dei Fiori	clastic sedimentary - slope	10 - Temperate Oceanic	11 - Oceanic - Semicontinental weak	3 - Hyperumid lower	19 - Supratemperate lower
61	45° 51'	08° 47'	690	VA	Varese (Sacromonte )	clastic sedimentary - slope	10 - Temperate Oceanic	11 - Oceanic - Semicontinental weak	3 - Hyperumid lower	19 - Supratemperate lower

**Towards a functional phytosociology: the functional ecology of woody diagnostic species and their vegetation classes in Northern Italy**iForest – Biogeosciences and Forestry – doi: [10.3832/ifor3730-014](https://doi.org/10.3832/ifor3730-014)

ID	Latitude (N)	Longitude (E)	Altitude (m a.s.l.)	Province	Location	land units (Smiraglia et al 2013)	Bioclimate (Pesaresi et al 2017)	continentality type	ombrotypes	thermotypes
62	45° 51'	08° 49'	580	VA	Induno Olona	carbonate sedimentary - table land	10 - Temperate Oceanic	11 - Oceanic - Semicontinental weak	3 - Hyperumid lower	19 - Supratemperate lower
66	45° 52'	08° 48'	880	VA	Monte Chiusarella	carbonate sedimentary - slope	10 - Temperate Oceanic	11 - Oceanic - Semicontinental weak	3 - Hyperumid lower	19 - Supratemperate lower
67	45° 53'	08° 45'	570	VA	Castello Cabiaglio	clastic sedimentary - piedmont slope	10 - Temperate Oceanic	11 - Oceanic - Semicontinental weak	3 - Hyperumid lower	19 - Supratemperate lower
68	45° 53'	08° 47'	510	VA	Lago di Brinzio	clastic sedimentary - piedmont slope	10 - Temperate Oceanic	11 - Oceanic - Semicontinental weak	3 - Hyperumid lower	19 - Supratemperate lower
70	45° 53'	08° 50'	795	VA	Alpe Tedesco	clastic sedimentary - piedmont slope	10 - Temperate Oceanic	11 - Oceanic - Semicontinental weak	3 - Hyperumid lower	19 - Supratemperate lower
71	45° 54'	08° 49'	443	VA	Ghirla	clastic sedimentary - piedmont slope	10 - Temperate Oceanic	11 - Oceanic - Semicontinental weak	3 - Hyperumid lower	19 - Supratemperate lower
74	45° 56'	08° 39'	204	VA	Castelveccan a (Caldè)	carbonate sedimentary - piedmont slope	10 - Temperate Oceanic	11 - Oceanic - Semicontinental weak	3 - Hyperumid lower	19 - Supratemperate lower
75	45° 56'	08° 42'	820	VA	Porto Valtravaglia (loc. S.Michele)	carbonate sedimentary - piedmont slope	10 - Temperate Oceanic	11 - Oceanic - Semicontinental weak	3 - Hyperumid lower	19 - Supratemperate lower
58	45° 50'	08° 47'	590	VA	Varese (loc. Oronco)	clastic sedimentary - piedmont slope	10 - Temperate Oceanic	12 - Oceanic - Semicontinental strong	3 - Hyperumid lower	19 - Supratemperate lower
59	45° 50'	08° 48'	478	VA	Villa Toepliz	clastic sedimentary - piedmont slope	10 - Temperate Oceanic	12 - Oceanic - Semicontinental strong	3 - Hyperumid lower	19 - Supratemperate lower
63	45° 52'	08° 38'	275	VA	Caravate	metamorphic - piedmont slope	10 - Temperate Oceanic	12 - Oceanic - Semicontinental strong	3 - Hyperumid lower	19 - Supratemperate lower
64	45° 52'	08° 39'	390	VA	Caravate (Sasso Poiano)	carbonate sedimentary - table land	10 - Temperate Oceanic	12 - Oceanic - Semicontinental strong	3 - Hyperumid lower	19 - Supratemperate lower
43	45° 42'	08° 56'	310	VA	Tradate (Abbate Guazzone)	terraced clastic sedimentary - plain	10 - Temperate Oceanic	12 - Oceanic - Semicontinental strong	4 - Humid upper	19 - Supratemperate lower
44	45° 44'	08° 37'	320	VA	Sesto Calende (masso di Preja Buia)	terraced clastic sedimentary - piedmont slope	10 - Temperate Oceanic	12 - Oceanic - Semicontinental strong	4 - Humid upper	19 - Supratemperate lower
45	45° 44'	08° 51'	327	VA	Gornate Olona	terraced clastic sedimentary - valley	10 - Temperate Oceanic	12 - Oceanic - Semicontinental strong	4 - Humid upper	19 - Supratemperate lower

**Towards a functional phytosociology: the functional ecology of woody diagnostic species and their vegetation classes in Northern Italy**iForest – Biogeosciences and Forestry – doi: [10.3832/ifer3730-014](https://doi.org/10.3832/ifer3730-014)

ID	Latitude (N)	Longitude (E)	Altitude (m a.s.l.)	Province	Location	land units (Smiraglia et al 2013)	Bioclimate (Pesaresi et al 2017)	continentality type	ombrotypes	thermotypes
46	45° 45' 08"	08° 39'	328	VA	Lentate Verbano	clastic sedimentary - table land	10 - Temperate Oceanic	12 - Oceanic - Semicontinental strong	4 - Humid upper	19 - Supratemperate lower
47	45° 45' 08"	08° 45'	303	VA	Mornago	clastic sedimentary - plain	10 - Temperate Oceanic	12 - Oceanic - Semicontinental strong	4 - Humid upper	19 - Supratemperate lower
48	45° 45' 08"	08° 50'	405	VA	Morazzone	terraced clastic sedimentary - plain	10 - Temperate Oceanic	12 - Oceanic - Semicontinental strong	4 - Humid upper	19 - Supratemperate lower
49	45° 46' 08"	08° 51'	340	VA	Lozza	terraced clastic sedimentary - piedmont slope	10 - Temperate Oceanic	12 - Oceanic - Semicontinental strong	4 - Humid upper	19 - Supratemperate lower
50	45° 47' 08"	08° 43'	241	VA	Cazzago Brabbia	clastic sedimentary - plain	10 - Temperate Oceanic	12 - Oceanic - Semicontinental strong	4 - Humid upper	19 - Supratemperate lower
51	45° 47' 08"	08° 44'	265	VA	Bodio	clastic sedimentary - plain	10 - Temperate Oceanic	12 - Oceanic - Semicontinental strong	4 - Humid upper	19 - Supratemperate lower
52	45° 47' 08"	08° 48'	240	VA	Varese (Capolago)	clastic sedimentary - table land	10 - Temperate Oceanic	12 - Oceanic - Semicontinental strong	4 - Humid upper	19 - Supratemperate lower
53	45° 47' 08"	08° 50'	390	VA	Bizzozzero (loc. UnInsubria)	clastic sedimentary - table land	10 - Temperate Oceanic	12 - Oceanic - Semicontinental strong	4 - Humid upper	19 - Supratemperate lower
54	45° 47' 08"	08° 52'	345	VA	Malnate	terraced clastic sedimentary - piedmont slope	10 - Temperate Oceanic	12 - Oceanic - Semicontinental strong	4 - Humid upper	19 - Supratemperate lower
55	45° 48' 08"	08° 48'	267	VA	Casbeno (loc. Ronchi)	terraced clastic sedimentary - piedmont slope	10 - Temperate Oceanic	12 - Oceanic - Semicontinental strong	4 - Humid upper	19 - Supratemperate lower
56	45° 48' 08"	08° 50'	400	VA	ospedale	clastic sedimentary - table land	10 - Temperate Oceanic	12 - Oceanic - Semicontinental strong	4 - Humid upper	19 - Supratemperate lower
57	45° 48' 08"	08° 53'	410	VA	Malnate (Birlinghina)	terraced clastic sedimentary - piedmont slope	10 - Temperate Oceanic	12 - Oceanic - Semicontinental strong	4 - Humid upper	19 - Supratemperate lower
40	45° 35' 08"	08° 43'	200	VA	Tornavento	clastic sedimentary - plain	10 - Temperate Oceanic	12 - Oceanic - Semicontinental strong	5 - Humid lower	19 - Supratemperate lower
41	45° 35' 08"	08° 45'	200	VA	Tornavento	terraced clastic sedimentary - plain	10 - Temperate Oceanic	12 - Oceanic - Semicontinental strong	5 - Humid lower	19 - Supratemperate lower
42	45° 38' 08"	08° 39'	173	VA	Castelnovate	clastic sedimentary - plain	10 - Temperate Oceanic	12 - Oceanic - Semicontinental strong	5 - Humid lower	19 - Supratemperate lower

**Towards a functional phytosociology: the functional ecology of woody diagnostic species and their vegetation classes in Northern Italy**iForest – Biogeosciences and Forestry – doi: [10.3832/ifer3730-014](https://doi.org/10.3832/ifer3730-014)

ID	Latitude (N)	Longitude (E)	Altitude (m a.s.l.)	Province	Location	land units (Smiraglia et al 2013)	Bioclimate (Pesaresi et al 2017)	continentality type	ombrotypes	thermotypes
65	45° 52' 08"	08° 46'	1070	VA	Campo dei Fiori	carbonate sedimentary - slope	10 - Temperate Oceanic	11 - Oceanic - Semicontinental weak	2 - Hyperumid upper	20 - Supratemperate upper
76	45° 56' 08"	08° 43'	740	VA	Porto Valtravaglia (loc. San Michele)	carbonate sedimentary - piedmont slope	10 - Temperate Oceanic	11 - Oceanic - Semicontinental weak	2 - Hyperumid upper	20 - Supratemperate upper
69	45° 53' 08"	08° 49'	465	VA	Ganna (San Gemolo)	metamorphic - piedmont slope	10 - Temperate Oceanic	11 - Oceanic - Semicontinental weak	3 - Hyperumid lower	20 - Supratemperate upper
72	45° 55' 08"	08° 40'	850	VA	Cuvignone	carbonate sedimentary - slope	10 - Temperate Oceanic	11 - Oceanic - Semicontinental weak	3 - Hyperumid lower	20 - Supratemperate upper
73	45° 55' 08"	08° 41'	720	VA	Castelveccana (loc. Sant'Antonio)	carbonate sedimentary - slope	10 - Temperate Oceanic	11 - Oceanic - Semicontinental weak	3 - Hyperumid lower	20 - Supratemperate upper
82	46° 01' 08"	08° 14'	410	VB	Piedimulera	metamorphic - plain	10 - Temperate Oceanic	11 - Oceanic - Semicontinental weak	3 - Hyperumid lower	19 - Supratemperate lower
81	45° 58' 07"	07° 57'	1375	VB	Macugnaga (loc. Pecetto)	metamorphic - plain	10 - Temperate Oceanic	10 - Oceanic - Euoceanic weak	3 - Hyperumid lower	21 - Orotemperate lower
80	45° 58' 07"	07° 56'	1480	VB	Macugnaga (loc. Pecetto)	metamorphic - plain	10 - Temperate Oceanic	10 - Oceanic - Euoceanic weak	2 - Hyperumid upper	22 - Orotemperate upper
77	45° 57' 07"	07° 54'	2015	VB	Macugnaga (loc. Zamboni Zappa)	metamorphic - summit	10 - Temperate Oceanic	10 - Oceanic - Euoceanic weak	2 - Hyperumid upper	23 - Cryotemperate lower
78	45° 57' 07"	07° 55'	1920	VB	Macugnaga (loc. Belvedere)	metamorphic - summit	10 - Temperate Oceanic	10 - Oceanic - Euoceanic weak	2 - Hyperumid upper	23 - Cryotemperate lower
79	45° 57' 07"	07° 58'	1275	VB	Macugnaga (loc. Pecetto)	metamorphic - piedmont slope	10 - Temperate Oceanic	10 - Oceanic - Euoceanic weak	2 - Hyperumid upper	23 - Cryotemperate lower
83	45° 32' 08"	08° 14'	219	VC	Castelletto Cervo-Rovasenda	clastic sedimentary - plain	10 - Temperate Oceanic	12 - Oceanic - Semicontinental strong	4 - Humid upper	19 - Supratemperate lower

**References**Pesaresi S, Biondi E, Casavecchia S (2017). Bioclimates of Italy. *Journal of Maps* 13 (2): 955-960.Smiraglia D, Capotorti G, Guida D, Mollo B, Siervo V, Blasi C (2013). Land units map of Italy. *Journal of Maps* 9 (2): 239-244.

**Towards a functional phytosociology: the functional ecology of woody diagnostic species and their vegetation classes in Northern Italy**iForest – Biogeosciences and Forestry – doi: [10.3832/ifor3730-014](https://doi.org/10.3832/ifor3730-014)**Tab. S2** - Distribution of the 221 woody diagnostic species among the 21 classes of European woody vegetation considered for the analysis. Species names and classes refers to the EuroVeg checklist (Mucina et al. 2016). Full name of classes is reported in Tab. 1.

species	AC (LOI)	BA (PIC)	CA (FAG)	CB (PUB)	CC (QUE)	CD (RHA)	CE (LON)	CF (ROB)	CH (ULI)	CN (SAB)	CO (ERI)	CP (MUG)	CQ (RHO)	CR (VIR)	FA (QUI)	FB (ROS)	FC (LAV)	HA (POP)	HB (PUR)	IA (ALN)	PB (OXY)
<i>Abies alba</i>	.	X	X	.	.	.	.	.	.	.	.	.	.	.	.	.	.	.	.	.	.
<i>Acer campestre</i>	.	.	X	.	.	X	.	.	.	.	.	.	.	.	.	.	.	X	.	.	.
<i>Acer negundo</i>	.	.	.	.	.	.	.	X	.	.	.	.	.	.	.	.	.	.	.	.	.
<i>Acer opalus opalus</i>	.	.	.	X	.	.	.	.	.	.	.	.	.	.	.	.	.	.	.	.	.
<i>Acer platanoides</i>	.	.	X	.	.	.	.	.	.	.	.	.	.	.	.	.	.	.	.	.	.
<i>Acer pseudoplatanus</i>	.	.	X	.	.	.	.	.	.	.	.	.	.	.	.	.	.	.	.	.	.
<i>Acer saccharinum</i>	.	.	.	.	.	.	.	.	.	.	.	.	.	.	.	.	.	X	.	.	.
<i>Aesculus hippocastanum</i>	.	.	.	X	.	.	.	.	.	.	.	.	.	.	.	.	.	.	.	.	.
<i>Ailanthus altissima</i>	.	.	.	.	.	.	.	X	.	.	.	.	.	.	.	.	.	.	.	.	.
<i>Alnus alnobetula alnobetula</i>	.	.	.	.	.	.	.	.	.	.	.	.	.	X	.	.	.	.	.	.	.
<i>Alnus cordata</i>	.	.	X	.	.	.	.	.	.	.	.	.	.	.	.	.	.	.	.	.	.
<i>Alnus glutinosa</i>	.	.	.	.	.	.	.	.	.	.	.	.	.	.	.	.	.	X	.	X	.
<i>Alnus incana</i>	.	X	.	.	.	.	.	.	.	.	.	.	.	.	.	.	.	X	.	.	.
<i>Amelanchier ovalis ovalis</i>	.	.	.	X	.	X	.	.	.	.	X	.	.	.	.	.	.	.	.	.	.
<i>Andromeda polifolia</i>	.	.	.	.	.	.	.	.	.	.	.	.	.	.	.	.	.	.	.	.	X
<i>Arbutus unedo</i>	.	.	.	.	.	.	.	.	.	.	.	.	.	.	X	.	.	.	.	.	.
<i>Arctostaphylos alpina</i>	X	.	.	.	.	.	.	.	.	.	.	.	.	.	.	.	.	.	.	.	.
<i>Arctostaphylos uva-ursi</i>	.	X	.	.	.	.	.	.	.	X	.	.	.	.	.	.	.	.	.	.	.
<i>Asparagus acutifolius</i>	.	.	.	.	.	.	.	.	.	.	.	.	.	.	X	.	.	.	.	.	.
<i>Berberis vulgaris</i>	.	.	.	.	.	X	.	.	.	.	.	.	.	.	.	.	.	.	.	.	.
<i>Betula pendula</i>	.	.	X	.	X	.	.	.	.	.	.	.	.	.	.	.	.	.	.	.	.
<i>Betula pubescens sl</i>	.	X	X	.	.	.	X	.	.	.	.	.	.	X	.	.	.	.	.	X	X
<i>Buddleja davidii</i>	.	.	.	.	.	.	.	X	.	.	.	.	.	.	.	.	.	.	.	.	.
<i>Buxus sempervirens</i>	.	.	.	X	.	.	.	.	.	.	.	.	.	.	.	.	.	.	.	.	.
<i>Calluna vulgaris</i>	.	.	.	.	.	.	.	.	X	.	.	.	.	.	.	.	X	.	.	.	X
<i>Carpinus betulus</i>	.	.	X	.	.	.	.	.	.	.	.	.	.	.	.	.	.	.	.	.	.
<i>Castanea sativa</i>	.	.	.	.	X	.	.	.	.	.	.	.	.	.	.	.	.	.	.	.	.
<i>Celtis australis</i>	.	.	.	X	.	.	.	.	.	.	.	.	.	.	.	.	.	.	.	.	.
<i>Cercis siliquastrum</i>	.	.	.	X	.	.	.	.	.	.	.	.	.	.	.	.	.	X	.	.	.
<i>Cistus albidus</i>	.	.	.	.	.	.	.	.	.	.	.	.	.	.	.	X	X	.	.	.	.
<i>Cistus creticus</i>	.	.	.	.	.	.	.	.	.	.	.	.	.	.	.	X	X	.	.	.	.
<i>Cistus monspeliensis</i>	.	.	.	.	.	.	.	.	.	.	.	.	.	.	.	X	X	.	.	.	.
<i>Cistus salviifolius</i>	.	.	.	.	.	.	.	.	.	.	.	.	.	.	.	X	X	.	.	.	.
<i>Clematis alpina</i>	.	X	.	.	.	.	.	.	.	.	.	X	.	.	.	.	.	.	.	.	.

**Towards a functional phytosociology: the functional ecology of woody diagnostic species and their vegetation classes in Northern Italy**iForest – Biogeosciences and Forestry – doi: [10.3832/ifor3730-014](https://doi.org/10.3832/ifor3730-014)

species	AC (LOI)	BA (PIC)	CA (FAG)	CB (PUB)	CC (QUE)	CD (RHA)	CE (LON)	CF (ROB)	CH (ULI)	CN (SAB)	CO (ERI)	CP (MUG)	CQ (RHO)	CR (VIR)	FA (QUI)	FB (ROS)	FC (LAV)	HA (POP)	HB (PUR)	IA (ALN)	PB (OXY)
<i>Clematis flammula</i>	.	.	.	.	.	.	.	.	.	.	.	.	.	.	X	.	.	.	.	.	.
<i>Clematis vitalba</i>	.	.	.	.	.	X	.	X	.	.	.	.	.	.	.	.	.	X	.	.	.
<i>Colutea arborescens</i>	.	.	.	X	.	.	.	.	.	.	.	.	.	.	.	.	.	.	.	.	.
<i>Coriaria myrtifolia</i>	.	.	.	.	.	X	.	.	.	.	.	.	.	.	.	.	.	.	.	.	.
<i>Cornus mas</i>	.	.	.	X	.	.	.	.	.	.	.	.	.	.	.	.	.	.	.	.	.
<i>Cornus sanguinea</i>	.	.	X	.	.	X	.	.	.	.	.	.	.	.	.	.	.	.	.	.	.
<i>Corylus avellana</i>	.	.	.	.	.	X	.	.	.	.	.	.	.	.	.	.	.	.	.	.	.
<i>Cotinus coggygria</i>	.	.	.	X	.	.	.	.	.	.	.	.	.	.	.	.	.	.	.	.	.
<i>Cotoneaster nebrodensis</i>	.	.	X	.	.	X	.	.	.	.	.	.	.	.	.	.	.	.	.	.	.
<i>Crataegus germanica</i>	.	.	X	.	.	X	.	.	.	.	.	.	.	.	.	.	.	.	.	.	.
<i>Crataegus laevigata</i>	.	.	X	.	.	X	.	.	.	.	.	.	.	.	.	.	X	.	.	.	.
<i>Crataegus monogyna</i>	.	.	.	X	.	X	.	.	.	.	.	.	.	.	.	.	.	.	.	.	.
<i>Cupressus sempervirens</i>	.	.	.	.	.	.	.	.	.	.	.	.	.	.	X	.	.	.	.	.	.
<i>Cytisophyllum sessilifolium</i>	.	.	.	.	.	X	.	.	.	.	.	.	.	.	.	.	.	.	.	.	.
<i>Cytisus emeriflorus</i>	.	.	.	.	.	.	.	.	.	.	X	.	.	.	.	.	.	.	.	.	.
<i>Cytisus hirsutus hirsutus</i>	.	.	.	.	X	.	.	.	.	.	.	.	.	.	.	.	.	.	.	.	.
<i>Cytisus nigricans nigricans</i>	.	.	.	.	X	.	.	.	.	.	.	.	.	.	.	.	.	.	.	.	.
<i>Cytisus purpureus</i>	.	.	.	.	.	.	.	.	.	.	X	.	.	.	.	.	.	.	.	.	.
<i>Cytisus scoparius</i>	.	.	.	.	.	.	X	.	.	.	.	.	.	.	.	.	.	.	.	.	.
<i>Cytisus spinosus</i>	.	.	.	.	.	.	.	.	.	.	.	.	.	.	X	.	.	.	.	.	.
<i>Daphne cneorum</i>	.	.	.	.	.	.	.	.	.	.	X	.	X	.	.	.	.	.	.	.	.
<i>Daphne gnidium</i>	.	.	.	.	.	.	.	.	.	.	.	.	.	.	X	.	.	.	.	.	.
<i>Daphne laureola</i>	.	.	X	X	.	.	.	.	.	.	.	.	.	.	.	.	.	.	.	.	.
<i>Daphne mezereum</i>	.	.	X	.	.	.	.	.	.	.	.	.	.	.	.	.	.	.	.	.	.
<i>Daphne striata</i>	.	.	.	.	.	.	.	.	.	.	X	.	X	.	.	.	.	.	.	.	.
<i>Dorycnium hirsutum</i>	.	.	.	.	.	.	.	.	.	.	.	.	.	.	.	X	.	.	.	.	.
<i>Dorycnium pentaphyllum pentaphyllum</i>	.	.	.	.	.	.	.	.	.	.	.	.	.	.	.	X	.	.	.	.	.
<i>Elaeagnus pungens</i>	.	.	.	.	X	.	.	.	.	.	.	.	.	.	.	.	.	.	.	.	.
<i>Empetrum hermaphroditum</i>	X	.	.	.	.	.	.	.	.	.	.	.	.	.	.	.	.	.	.	.	.
<i>Empetrum nigrum</i>	X	.	.	.	.	.	.	.	X	.	.	.	.	.	.	.	.	.	.	.	.
<i>Erica arborea</i>	.	.	.	.	.	.	.	.	.	.	.	.	.	.	X	.	.	.	.	.	.
<i>Erica carnea</i>	.	.	.	.	.	.	.	.	.	.	X	.	X	.	.	.	.	.	.	.	.
<i>Erica scoparia</i>	.	.	.	.	.	.	.	.	X	.	.	.	.	.	.	.	.	.	.	.	.
<i>Euonymus europaeus</i>	.	.	X	.	.	X	.	.	.	.	.	.	.	.	.	.	.	.	.	.	.
<i>Euphorbia characias</i>	.	.	.	.	.	.	.	.	.	.	.	.	.	.	X	.	.	.	.	.	.
<i>Euphorbia dendroides</i>	.	.	.	.	.	.	.	.	.	.	.	.	.	.	X	.	.	.	.	.	.
<i>Fagus sylvatica</i>	.	.	X	.	X	.	.	.	.	.	.	.	.	.	.	.	.	.	.	.	.
<i>Ficus carica</i>	.	.	.	.	.	.	.	.	.	.	.	.	.	.	X	.	.	.	.	.	.

**Towards a functional phytosociology: the functional ecology of woody diagnostic species and their vegetation classes in Northern Italy**iForest – Biogeosciences and Forestry – doi: [10.3832/ifer3730-014](https://doi.org/10.3832/ifer3730-014)

species	AC (LOI)	BA (PIC)	CA (FAG)	CB (PUB)	CC (QUE)	CD (RHA)	CE (LON)	CF (ROB)	CH (ULI)	CN (SAB)	CO (ERI)	CP (MUG)	CQ (RHO)	CR (VIR)	FA (QUI)	FB (ROS)	FC (LAV)	HA (POP)	HB (PUR)	IA (ALN)	PB (OXY)
<i>Frangula alnus</i>	.	.	.	.	.	.	X	.	.	.	.	.	.	.	.	.	.	X	.	X	.
<i>Fraxinus angustifolia oxycarpa</i>	.	.	.	.	.	.	.	.	.	.	.	.	.	.	.	.	.	X	.	.	.
<i>Fraxinus excelsior</i>	.	.	X	.	.	.	.	.	.	.	.	.	.	.	.	.	.	.	.	.	.
<i>Fraxinus ornus</i>	.	.	.	X	.	.	.	.	.	.	.	.	.	.	.	.	.	.	.	.	.
<i>Fumana ericoides</i>	.	.	.	.	.	.	.	.	.	.	.	.	.	.	.	X	.	.	.	.	.
<i>Fumana laevipes</i>	.	.	.	.	.	.	.	.	.	.	.	.	.	.	.	X	.	.	.	.	.
<i>Fumana thymifolia</i>	.	.	.	.	.	.	.	.	.	.	.	.	.	.	.	X	.	.	.	.	.
<i>Genista germanica</i>	.	.	.	.	.	.	.	X	.	.	.	.	.	.	.	.	.	.	.	.	.
<i>Genista pilosa</i>	.	.	.	.	.	.	.	X	.	.	.	.	.	.	.	.	.	.	.	.	.
<i>Genista radiata</i>	.	.	.	.	.	.	.	.	X	X	.	X	.	.	.	.	.	.	.	.	.
<i>Genista tinctoria sl</i>	.	.	.	X	.	.	.	X	.	.	.	.	.	.	.	.	.	.	.	.	.
<i>Hedera helix</i>	.	.	X	.	.	.	.	.	.	.	.	.	.	.	.	.	.	X	.	.	.
<i>Helianthemum apenninum</i>	.	.	.	.	.	.	.	.	.	.	.	.	.	.	.	X	.	.	.	.	.
<i>Helianthemum italicum</i>	.	.	.	.	.	.	.	.	.	.	.	.	.	.	.	X	.	.	.	.	.
<i>Helichrysum italicum italicum</i>	.	.	.	.	.	.	.	.	.	.	.	.	.	.	.	X	.	.	.	.	.
<i>Helichrysum stoechas stoechas</i>	.	.	.	.	.	.	.	.	.	.	.	.	.	.	.	X	.	.	.	.	.
<i>Hippocrepis emerus emerus</i>	.	.	.	X	.	.	.	.	.	.	.	.	.	.	.	.	.	.	.	.	.
<i>Hippophaë rhamnoides fluviatilis</i>	.	.	.	.	.	.	.	.	.	.	.	.	.	.	.	.	.	.	X	.	.
<i>Ilex aquifolium</i>	.	.	X	.	.	.	.	.	.	.	.	.	.	.	.	.	.	.	.	.	.
<i>Juglans regia</i>	.	.	.	.	.	.	.	.	.	.	.	.	.	.	.	.	.	X	.	.	.
<i>Juniperus communis communis</i>	.	X	.	.	.	X	.	.	.	.	.	.	.	.	.	.	.	.	.	.	.
<i>Juniperus communis nana</i>	X	.	.	.	.	.	.	.	X	.	X	X	.	.	.	.	.	.	.	.	.
<i>Juniperus oxycedrus oxycedrus</i>	.	.	.	X	.	X	.	.	.	.	.	.	.	.	.	.	.	.	.	.	.
<i>Kalmia procumbens</i>	X	.	.	.	.	.	.	.	.	.	.	.	.	.	.	.	.	.	.	.	.
<i>Kerria japonica</i>	.	.	.	.	.	.	X	.	.	.	.	.	.	.	.	.	.	.	.	.	.
<i>Laburnum alpinum</i>	.	.	X	.	.	.	.	.	.	.	.	.	.	.	.	.	.	.	.	.	.
<i>Laburnum anagyroides</i>	.	.	.	X	.	.	.	.	.	.	.	.	.	.	.	.	.	.	.	.	.
<i>Larix decidua</i>	.	X	.	.	.	.	.	.	.	.	.	.	.	.	.	.	.	.	.	.	.
<i>Laurus nobilis</i>	.	.	.	.	.	.	.	.	.	.	.	.	.	.	X	.	.	.	.	.	.
<i>Lavandula stoechas</i>	.	.	.	.	.	.	.	.	.	.	.	.	.	.	.	X	X	.	.	.	.
<i>Ligustrum lucidum</i>	.	.	X	.	.	.	.	.	.	.	.	.	.	.	.	.	.	.	.	.	.
<i>Ligustrum vulgare</i>	.	.	.	.	.	X	.	.	.	.	.	.	.	.	.	.	.	.	.	.	.
<i>Lonicera alpigena</i>	.	.	X	.	.	.	.	.	.	.	.	.	.	.	.	.	.	.	.	.	.
<i>Lonicera caerulea</i>	.	X	.	.	.	.	.	.	.	.	.	.	.	.	.	.	.	.	.	.	.
<i>Lonicera caprifolium</i>	.	.	X	.	.	X	.	.	.	.	.	.	.	.	.	.	.	.	.	.	.
<i>Lonicera implexa</i>	.	.	.	.	.	X	.	.	.	.	.	.	.	.	X	.	.	.	.	.	.
<i>Lonicera japonica</i>	.	.	.	.	.	X	.	.	.	.	.	.	.	.	.	.	.	.	.	.	.
<i>Lonicera nigra</i>	.	X	X	.	.	.	.	.	.	.	.	.	.	.	.	.	.	.	.	.	.



**Towards a functional phytosociology: the functional ecology of woody diagnostic species and their vegetation classes in Northern Italy**iForest – Biogeosciences and Forestry – doi: [10.3832/ifer3730-014](https://doi.org/10.3832/ifer3730-014)

species	AC (LOI)	BA (PIC)	CA (FAG)	CB (PUB)	CC (QUE)	CD (RHA)	CE (LON)	CF (ROB)	CH (ULI)	CN (SAB)	CO (ERI)	CP (MUG)	CQ (RHO)	CR (VIR)	FA (QUI)	FB (ROS)	FC (LAV)	HA (POP)	HB (PUR)	IA (ALN)	PB (OXY)
<i>Lonicera xylosteum</i>	.	.	X	.	.	X	.	.	.	.	.	.	.	.	.	.	.	.	.	.	.
<i>Malus dasycarpa</i>	.	.	.	.	.	X	.	.	.	.	.	.	.	.	.	.	.	.	.	.	.
<i>Malus sylvestris</i>	.	.	.	.	.	.	.	.	.	.	.	.	.	.	.	.	.	X	.	.	.
<i>Myricaria germanica</i>	.	.	.	.	.	.	.	.	.	.	.	.	.	.	.	.	.	.	X	.	.
<i>Myrtus communis</i>	.	.	.	.	.	.	.	.	.	.	.	.	.	.	X	.	.	.	.	.	.
<i>Olea europaea</i>	.	.	.	.	.	.	.	.	.	.	.	.	.	.	X	.	.	.	.	.	.
<i>Ostrya carpinifolia</i>	.	.	.	X	.	.	.	.	.	.	.	.	.	.	.	.	.	.	.	.	.
<i>Osiris alba</i>	.	.	.	.	.	.	.	.	.	.	.	.	.	.	X	.	.	.	.	.	.
<i>Parthenocissus quinquefolia</i>	.	.	.	.	.	.	.	X	.	.	.	.	.	.	.	.	.	.	.	.	.
<i>Phillyrea angustifolia</i>	.	.	.	.	.	.	.	.	.	.	.	.	.	.	X	.	.	.	.	.	.
<i>Phillyrea latifolia</i>	.	.	.	X	.	.	.	.	.	.	.	.	.	.	X	.	.	.	.	.	.
<i>Picea abies</i>	.	X	.	.	.	.	.	.	.	.	.	.	.	.	.	.	.	.	.	.	.
<i>Pinus cembra</i>	.	X	.	.	.	.	.	.	.	.	.	.	.	.	.	.	.	.	.	.	.
<i>Pinus halepensis halepensis</i>	.	.	.	.	.	.	.	.	.	.	.	.	.	.	X	.	.	.	.	.	.
<i>Pinus mugo mugo</i>	X	X	.	.	.	.	.	.	.	.	X	X	X	.	.	.	.	.	.	.	.
<i>Pinus mugo rotundata</i>	.	.	.	.	.	.	.	.	.	.	.	.	.	.	.	.	.	.	.	.	X
<i>Pinus mugo uncinata</i>	.	X	.	.	.	.	.	.	.	X	.	.	.	.	.	.	.	.	.	.	.
<i>Pinus nigra laricio</i>	.	.	X	.	.	.	.	.	.	.	.	.	.	.	.	.	.	.	.	.	.
<i>Pinus nigra nigra</i>	.	.	.	.	.	.	.	.	.	.	X	.	.	.	.	.	.	.	.	.	.
<i>Pinus pinaster</i>	.	.	.	.	.	.	.	.	.	.	.	.	.	.	X	.	.	.	.	.	.
<i>Pinus pinea</i>	.	.	.	.	.	.	.	.	.	.	.	.	.	.	X	.	.	.	.	.	.
<i>Pinus sylvestris</i>	.	X	.	.	.	.	.	.	.	X	X	.	.	.	.	.	.	.	.	.	.
<i>Pistacia lentiscus</i>	.	.	.	.	.	.	.	.	.	.	.	.	.	.	X	.	.	.	.	.	.
<i>Pistacia terebinthus</i>	.	.	.	X	.	.	.	.	.	.	.	.	.	.	X	.	.	.	.	.	.
<i>Polygala chamaebuxus</i>	.	.	.	.	.	.	.	.	.	.	X	.	.	.	.	.	.	.	.	.	.
<i>Populus alba</i>	.	.	.	.	.	.	.	.	.	.	.	.	.	.	.	.	.	X	.	.	.
<i>Populus nigra</i>	.	.	.	.	.	.	.	.	.	.	.	.	.	.	.	.	.	X	.	.	.
<i>Populus tremula</i>	.	.	X	.	.	X	.	.	.	.	.	.	.	.	.	.	.	.	.	.	.
<i>Prunus avium</i>	.	.	X	.	.	X	.	.	.	.	.	.	.	.	.	.	.	X	.	.	.
<i>Prunus cerasifera</i>	.	.	.	.	.	X	.	.	.	.	.	.	.	.	.	.	.	.	.	.	.
<i>Prunus cerasus</i>	.	.	.	.	.	X	.	.	.	.	.	.	.	.	.	.	.	.	.	.	.
<i>Prunus laurocerasus</i>	.	.	X	.	.	.	.	.	.	.	.	.	.	.	.	.	.	.	.	.	.
<i>Prunus mahaleb</i>	.	.	.	X	.	X	.	.	.	.	.	.	.	.	.	.	.	.	.	.	.
<i>Prunus padus</i>	.	.	.	.	.	.	.	.	.	.	.	.	.	.	.	.	.	X	.	.	.
<i>Prunus serotina</i>	.	.	.	.	X	.	.	.	.	.	.	.	.	.	.	.	.	.	.	.	.
<i>Prunus spinosa</i>	.	.	.	.	.	X	.	.	.	.	.	.	.	.	.	.	.	.	.	.	.
<i>Punica granatum</i>	.	.	.	X	.	.	.	.	.	.	.	.	.	.	X	.	.	.	.	.	.
<i>Pyracantha coccinea</i>	.	.	.	X	.	X	.	.	.	.	.	.	.	.	.	.	.	.	.	.	.

**Towards a functional phytosociology: the functional ecology of woody diagnostic species and their vegetation classes in Northern Italy**iForest – Biogeosciences and Forestry – doi: [10.3832/ifer3730-014](https://doi.org/10.3832/ifer3730-014)

species	AC (LOI)	BA (PIC)	CA (FAG)	CB (PUB)	CC (QUE)	CD (RHA)	CE (LON)	CF (ROB)	CH (ULI)	CN (SAB)	CO (ERI)	CP (MUG)	CQ (RHO)	CR (VIR)	FA (QUI)	FB (ROS)	FC (LAV)	HA (POP)	HB (PUR)	IA (ALN)	PB (OXY)
<i>Pyrus communis communis</i>	.	.	X	.	.	.	.	.	.	.	.	.	.	.	.	.	.	.	.	.	.
<i>Quercus cerris</i>	.	.	.	X	.	.	.	.	.	.	.	.	.	.	.	.	.	.	.	.	.
<i>Quercus ilex</i>	.	.	.	.	.	.	.	.	.	.	.	.	.	.	X	.	.	.	.	.	.
<i>Quercus petraea</i>	.	.	X	X	X	.	.	.	.	.	.	.	.	.	.	.	.	.	.	.	.
<i>Quercus pubescens</i>	.	.	.	X	.	.	.	.	.	.	.	.	.	.	.	.	.	.	.	.	.
<i>Quercus robur robur</i>	.	.	X	.	X	.	.	.	.	.	.	.	.	.	.	X	.	.	.	.	.
<i>Quercus suber</i>	.	.	.	.	.	.	.	.	.	.	.	.	.	.	X	.	.	.	.	.	.
<i>Quercus virgiliana</i>	.	.	.	X	.	.	.	.	.	.	.	.	.	.	.	.	.	.	.	.	.
<i>Rhamnus alaternus</i>	.	.	.	.	.	.	.	.	.	.	.	.	.	.	X	.	.	.	.	.	.
<i>Rhamnus carthartica</i>	.	.	.	.	.	X	.	.	.	.	.	.	.	.	.	.	.	.	.	X	.
<i>Rhamnus saxatilis saxatilis</i>	.	.	.	.	.	X	.	.	.	.	X	.	.	.	.	.	.	.	.	.	.
<i>Rhododendron ferrugineum</i>	X	.	.	.	.	.	.	.	.	.	.	.	.	.	.	.	.	.	.	.	.
<i>Rhododendron hirsutum</i>	.	.	.	.	.	.	.	.	.	.	.	.	X	.	.	.	.	.	.	.	.
<i>Rhodothamnus chamaecistus</i>	.	.	.	.	.	.	.	.	.	.	X	.	X	.	.	.	.	.	.	.	.
<i>Robinia pseudoacacia</i>	.	.	.	.	.	.	.	X	.	.	.	.	.	.	.	.	.	.	.	.	.
<i>Rosa agrestis</i>	.	.	.	.	.	X	.	.	.	.	.	.	.	.	.	.	.	.	.	.	.
<i>Rosa arvensis</i>	.	.	X	X	.	.	.	.	.	.	.	.	.	.	.	.	.	.	.	.	.
<i>Rosa canina</i>	.	.	.	.	.	X	.	.	.	.	.	.	.	.	.	.	.	.	.	.	.
<i>Rosa dumalis</i>	.	.	.	.	.	X	.	.	.	.	.	.	.	.	.	.	.	.	.	.	.
<i>Rosa pendulina</i>	.	X	.	.	.	X	.	.	.	.	.	X	.	.	.	.	.	.	.	.	.
<i>Rosa rubiginosa</i>	.	.	.	.	.	X	.	.	.	.	.	.	.	.	.	.	.	.	.	.	.
<i>Rosmarinus officinalis</i>	.	.	.	.	.	.	.	.	.	.	.	.	.	.	.	X	.	.	.	.	.
<i>Rubus caesius</i>	.	.	.	.	.	.	.	X	.	.	.	.	.	.	.	.	.	X	.	.	.
<i>Rubus hirtus</i>	.	.	.	.	.	X	.	.	.	.	.	.	.	.	.	.	.	.	.	.	.
<i>Rubus idaeus</i>	.	.	.	.	.	X	X	.	.	.	.	.	.	.	.	.	.	.	.	.	.
<i>Rubus praecox</i>	.	.	.	.	.	X	.	.	.	.	.	.	.	.	.	.	.	.	.	.	.
<i>Rubus ulmifolius</i>	.	.	.	.	.	X	.	.	.	.	.	.	.	.	.	.	.	.	.	.	.
<i>Ruscus aculeatus</i>	.	.	.	X	.	.	.	.	.	.	.	.	.	.	X	.	.	.	.	.	.
<i>Salix alba</i>	.	.	.	.	.	.	.	.	.	.	.	.	.	.	.	.	.	.	X	.	.
<i>Salix appendiculata</i>	.	.	.	.	.	.	.	.	.	.	.	X	.	X	.	.	.	.	.	.	.
<i>Salix babylonica</i>	.	.	.	.	.	.	.	.	.	.	.	.	.	.	.	.	.	X	.	.	.
<i>Salix caesia</i>	.	.	.	.	.	.	.	.	.	.	.	.	.	X	.	.	.	.	.	.	.
<i>Salix capreae</i>	.	.	.	.	.	.	.	X	.	.	.	.	.	.	.	.	.	.	.	.	.
<i>Salix cinerea</i>	.	.	.	.	.	.	.	.	.	.	.	.	.	.	.	.	.	.	.	X	.
<i>Salix eleagnos eleagnos</i>	.	.	.	.	.	.	.	.	.	.	.	.	.	.	.	.	.	.	X	.	.
<i>Salix foetida</i>	.	.	.	.	.	.	.	.	.	.	.	.	.	X	.	.	.	.	.	.	.
<i>Salix glabra</i>	.	.	.	.	.	.	.	.	.	.	.	.	.	X	.	.	.	.	.	.	.
<i>Salix hastata</i>	.	.	.	.	.	.	.	.	.	.	.	.	.	X	.	.	.	.	.	.	.

**Towards a functional phytosociology: the functional ecology of woody diagnostic species and their vegetation classes in Northern Italy**iForest – Biogeosciences and Forestry – doi: [10.3832/ifor3730-014](https://doi.org/10.3832/ifor3730-014)

species	AC (LOI)	BA (PIC)	CA (FAG)	CB (PUB)	CC (QUE)	CD (RHA)	CE (LON)	CF (ROB)	CH (ULI)	CN (SAB)	CO (ERI)	CP (MUG)	CQ (RHO)	CR (VIR)	FA (QUI)	FB (ROS)	FC (LAV)	HA (POP)	HB (PUR)	IA (ALN)	PB (OXY)	
<i>Salix helvetica</i>	.	.	.	.	.	.	.	.	.	.	.	.	.	X	.	.	.	.	.	.	.	.
<i>Salix myrsinifolia</i>	.	.	.	.	.	.	.	.	.	.	.	.	.	X	.	.	.	.	X	.	.	.
<i>Salix pentandra</i>	.	.	.	.	.	.	.	.	.	.	.	.	.	X	.	.	.	.	.	.	.	.
<i>Salix purpurea</i>	.	.	.	.	.	.	.	.	.	.	.	.	.	.	.	.	.	.	X	.	.	.
<i>Salix rosmarinifolia</i>	.	.	.	.	.	.	.	.	.	.	.	.	.	.	.	.	.	.	.	X	.	.
<i>Salix triandra triandra</i>	.	.	.	.	.	.	.	.	.	.	.	.	.	.	.	.	.	.	X	.	.	.
<i>Salix waldsteiniana</i>	.	.	.	.	.	.	.	.	.	.	.	.	.	X	.	.	.	.	.	.	.	.
<i>Sambucus nigra</i>	.	.	.	.	.	.	.	X	.	.	.	.	.	.	.	.	X	.	.	.	.	.
<i>Sambucus racemosa</i>	.	.	.	.	.	.	.	X	.	.	.	.	.	X	.	.	.	.	.	.	.	.
<i>Smilax aspera</i>	.	.	.	.	.	.	.	.	.	.	.	.	.	.	X	.	.	.	.	.	.	.
<i>Sorbaria sorbifolia</i>	.	.	.	.	.	X	.	.	.	.	.	.	.	.	.	.	.	.	.	.	.	.
<i>Sorbus aria</i>	.	.	X	X	.	.	.	.	.	.	.	.	.	.	.	.	.	.	.	.	.	.
<i>Sorbus aucuparia sl</i>	.	X	.	.	.	X	X	.	.	.	.	X	.	.	.	.	.	.	.	.	.	.
<i>Sorbus chamaemespilus</i>	.	X	.	.	.	.	.	.	.	.	X	X	.	.	.	.	.	.	.	.	.	.
<i>Sorbus domestica</i>	.	.	.	X	.	.	.	.	.	.	.	.	.	.	.	.	.	.	.	.	.	.
<i>Sorbus torminalis</i>	.	.	.	X	.	.	.	.	.	.	.	.	.	.	.	.	.	.	.	.	.	.
<i>Spiraea japonica</i>	.	.	.	.	.	.	.	X	.	.	.	.	.	.	.	.	.	.	.	.	.	.
<i>Syringa vulgaris</i>	.	.	.	X	.	.	.	.	.	.	.	.	.	.	.	.	.	.	.	.	.	.
<i>Taxus baccata</i>	.	.	X	X	.	.	.	.	.	.	.	.	.	.	.	.	.	.	.	.	.	.
<i>Teucrium capitatum</i>	.	.	.	.	.	.	.	.	.	.	.	.	.	.	.	X	.	.	.	.	.	.
<i>Thymus vulgaris</i>	.	.	.	.	.	.	.	.	.	.	.	.	.	.	.	X	.	.	.	.	.	.
<i>Tilia cordata</i>	.	.	X	.	.	.	.	.	.	.	.	.	.	.	.	.	.	.	.	.	.	.
<i>Tilia platyphyllos</i>	.	.	X	.	.	.	.	.	.	.	.	.	.	.	.	.	.	.	.	.	.	.
<i>Tilia tomentosa</i>	.	.	.	X	.	.	.	.	.	.	.	.	.	.	.	.	.	.	.	.	.	.
<i>Trachycarpus fortunei</i>	.	.	X	.	.	.	.	.	.	.	.	.	.	.	.	.	.	.	.	.	.	.
<i>Ulmus glabra</i>	.	.	X	.	.	.	.	.	.	.	.	.	.	.	.	.	.	.	.	.	.	.
<i>Ulmus laevis</i>	.	.	.	.	.	.	.	X	.	.	.	.	.	.	.	.	.	X	.	.	.	.
<i>Ulmus minor</i>	.	.	X	.	.	.	.	X	.	.	.	.	.	.	.	.	.	X	.	.	.	.
<i>Vaccinium gaultherioides</i>	X	.	.	.	.	.	.	.	.	.	.	.	.	.	.	.	.	.	.	.	.	.
<i>Vaccinium myrtillus</i>	.	X	.	.	X	.	.	X	.	.	.	.	.	.	.	.	.	.	.	.	.	.
<i>Vaccinium uliginosum</i>	X	.	.	.	.	.	.	.	.	.	.	.	.	.	.	.	.	.	.	.	.	X
<i>Vaccinium vitis-idaea</i>	X	X	.	.	.	.	.	X	.	.	.	.	.	.	.	.	.	.	.	.	.	.
<i>Viburnum lantana</i>	.	.	.	.	.	X	.	.	.	.	.	.	.	.	.	.	.	X	.	.	.	.
<i>Viburnum opulus</i>	.	.	.	.	.	X	.	.	.	.	.	.	.	.	.	.	.	X	.	.	.	.
<i>Viburnum tinus</i>	.	.	.	.	.	.	.	.	.	.	.	.	.	.	X	.	.	.	.	.	.	.

**Towards a functional phytosociology: the functional ecology of woody diagnostic species and their vegetation classes in Northern Italy**iForest – Biogeosciences and Forestry – doi: [10.3832/ifer3730-014](https://doi.org/10.3832/ifer3730-014)**Tab. S3** - List of the 221 woody diagnostic species indicating their growth form, leaf life span, neophyte vs. native species, functional traits and Grime's CSR (Competitive, Stress-tolerant, Ruderal) plant strategies. Species names refers to the EuroVeg checklist (Mucina et al. 2016).

species	NEOPHYTES	GROWTH FORM	LEAF LIFE SPAN	LNC (%)	C/N (% / %)	LA (mm <sup>2</sup> )	SLA (mm <sup>2</sup> /mg)	LDMC (%)	CANH (mm)	SM (1000 seeds / gr)	PC1	PC2	C (%)	S (%)	R (%)
<i>Abies alba</i>	.	tree	evergreen	1.3	35.2	102.5	6.1	40.5	22500.0	60.2	-1.3	0.7	5.2	94.8	0.0
<i>Acer campestre</i>	.	tree	deciduous	1.4	33.7	3564.0	22.3	25.0	13300.0	82.4	0.1	0.8	42.8	29.2	27.9
<i>Acer negundo</i>	yes	tree	deciduous	2.5	19.8	8241.4	27.0	25.4	12500.0	36.0	1.0	0.9	50.3	23.7	25.9
<i>Acer opalus opalus</i>	.	tree	deciduous	1.3	37.1	6756.8	26.2	25.9	6200.0	100.0	0.2	0.7	48.1	24.7	27.2
<i>Acer platanoides</i>	.	tree	deciduous	1.9	25.0	14788.8	23.1	40.8	11500.0	125.5	0.1	1.4	48.9	35.6	15.5
<i>Acer pseudoplatanus</i>	.	tree	deciduous	2.9	14.7	20312.7	11.3	36.0	17500.0	96.4	0.5	1.6	64.3	33.2	2.5
<i>Acer saccharinum</i>	yes	tree	deciduous	2.5	19.0	4174.7	14.4	41.1	11500.0	201.5	0.1	1.4	36.8	52.7	10.5
<i>Aesculus hippocastanum</i>	.	tree	deciduous	2.7	17.0	65366.4	10.6	37.2	12500.0	12976.0	0.2	2.4	76.2	23.1	0.7
<i>Ailanthus altissima</i>	yes	tree	deciduous	2.4	20.2	64503.0	12.9	35.5	10000.0	29.4	0.3	1.4	75.0	21.2	3.7
<i>Alnus alnobetula alnobetula</i>	.	shrub	deciduous	3.1	15.7	2235.3	14.6	36.6	2000.0	25.6	0.6	0.4	31.6	55.2	13.2
<i>Alnus cordata</i>	.	tree	deciduous	2.7	19.2	5557.8	22.7	30.3	6000.0	4.8	0.9	0.5	42.7	34.4	22.9
<i>Alnus glutinosa</i>	.	tree	deciduous	2.9	15.6	3974.2	18.0	33.2	13500.0	5.0	0.8	0.7	38.9	43.0	18.2
<i>Alnus incana</i>	.	tree	deciduous	4.2	10.7	2235.9	16.8	31.1	8500.0	1.4	1.4	0.4	34.0	47.1	18.8
<i>Amelanchier ovalis ovalis</i>	.	shrub	deciduous	2.4	20.7	754.8	17.7	43.0	1500.0	5.1	0.1	0.0	16.3	64.9	18.9
<i>Andromeda polifolia</i>	.	sub-shrub	deciduous	1.4	37.6	50.0	5.4	42.3	250.0	0.2	-1.1	-1.5	2.3	97.7	0.0
<i>Arbutus unedo</i>	.	shrub	evergreen	0.7	75.2	1066.2	11.9	41.0	4500.0	5.7	-1.6	0.2	22.8	69.9	7.3
<i>Arctostaphylos alpina</i>	.	sub-shrub	deciduous	2.0	25.8	263.9	15.8	31.6	400.0	2.6	0.2	-0.9	12.2	65.0	22.8
<i>Arctostaphylos uva-ursi</i>	.	sub-shrub	evergreen	0.9	58.5	162.3	6.1	45.9	600.0	18.5	-1.8	-0.4	7.4	92.6	0.0
<i>Asparagus acutifolius</i>	.	sub-shrub	evergreen	2.0	23.5	314.0	9.0	43.5	900.0	81.3	-0.5	0.1	12.3	87.7	0.0
<i>Berberis vulgaris</i>	.	sub-shrub	deciduous	2.0	26.1	605.3	12.9	37.8	1500.0	13.0	-0.2	0.0	18.1	70.9	11.0
<i>Betula pendula</i>	.	tree	deciduous	2.2	20.8	1386.3	12.3	43.0	17500.0	0.5	-0.1	0.5	24.4	67.8	7.7
<i>Betula pubescens sl</i>	.	tree	deciduous	2.8	16.3	1929.1	19.1	33.0	12500.0	0.3	0.8	0.2	29.5	48.6	21.9
<i>Buddleja davidii</i>	yes	shrub	deciduous	1.3	38.5	4268.7	11.9	30.2	2500.0	0.1	-0.3	-0.5	48.6	44.6	6.8
<i>Buxus sempervirens</i>	.	shrub	evergreen	2.2	23.3	214.0	6.8	38.6	2500.0	13.9	-0.4	0.0	10.9	89.1	0.0
<i>Calluna vulgaris</i>	.	sub-shrub	evergreen	1.4	34.2	0.9	12.8	56.0	550.0	0.0	-1.2	-1.9	0.0	90.7	9.3
<i>Carpinus betulus</i>	.	tree	deciduous	2.2	19.5	2558.1	12.1	45.5	11500.0	42.0	-0.2	1.1	30.3	63.7	6.0
<i>Castanea sativa</i>	.	tree	deciduous	2.5	17.9	6696.5	13.3	38.6	17500.0	9944.0	0.1	2.1	45.5	46.8	7.7
<i>Celtis australis</i>	.	tree	deciduous	3.7	12.1	4369.9	19.7	30.5	17500.0	226.8	1.2	1.4	41.2	38.4	20.4
<i>Cercis siliquastrum</i>	.	tree	deciduous	2.7	19.4	4888.5	15.2	31.7	5500.0	40.0	0.5	0.8	45.1	41.7	13.1
<i>Cistus albidus</i>	.	sub-shrub	deciduous	2.2	20.6	728.0	22.6	13.7	650.0	1.2	1.2	-1.1	37.6	0.0	62.4
<i>Cistus creticus</i>	.	sub-shrub	deciduous	1.0	48.5	194.3	9.6	34.2	650.0	1.1	-1.0	-1.0	11.8	88.2	0.0
<i>Cistus monspeliensis</i>	.	sub-shrub	deciduous	1.7	29.3	136.0	9.0	29.2	650.0	1.0	-0.3	-1.1	11.2	88.8	0.0
<i>Cistus salviifolius</i>	.	sub-shrub	deciduous	1.6	30.5	958.5	9.4	26.7	400.0	1.1	-0.1	-0.9	36.7	63.3	0.0

**Towards a functional phytosociology: the functional ecology of woody diagnostic species and their vegetation classes in Northern Italy**iForest – Biogeosciences and Forestry – doi: [10.3832/ifer3730-014](https://doi.org/10.3832/ifer3730-014)

species	NEOPHYTES	GROWTH FORM	LEAF LIFE SPAN								PC1	PC2	C (%)	S (%)	R (%)
				LNC (%)	CIN (% / %)	LA (mm <sup>2</sup> )	SLA (mm <sup>2</sup> /mg)	LDMC (%)	CANH (mm)	SM (1000 seeds / gr)					
<i>Clematis alpina</i>	.	climber	deciduous	2.9	16.0	3078.2	21.6	22.1	800.0	3.3	1.4	-0.4	46.0	24.7	29.3
<i>Clematis flammula</i>	.	climber	deciduous	2.5	18.9	2253.1	21.8	21.8	2500.0	8.1	1.1	0.0	41.0	24.7	34.3
<i>Clematis vitalba</i>	.	climber	deciduous	4.3	10.3	11390.7	42.9	18.1	8500.0	2.1	2.7	0.4	58.8	4.9	36.4
<i>Colutea arborescens</i>	.	shrub	deciduous	2.2	18.4	3330.6	24.7	24.9	2500.0	16.7	1.0	0.2	40.7	28.0	31.3
<i>Coriaria myrtifolia</i>	.	sub-shrub	deciduous	1.7	26.4	1173.1	15.8	28.6	1000.0	9.9	0.2	-0.3	29.8	50.9	19.4
<i>Cornus mas</i>	.	shrub	deciduous	1.2	39.0	1128.7	22.4	33.9	2674.0	210.0	-0.4	0.4	21.9	50.9	27.2
<i>Cornus sanguinea</i>	.	shrub	deciduous	2.7	18.1	5061.7	16.8	32.7	4000.0	52.8	0.6	0.7	43.2	41.5	15.3
<i>Corylus avellana</i>	.	shrub	deciduous	2.4	18.9	8151.5	22.9	31.8	3000.0	1097.3	0.7	1.1	46.6	32.8	20.6
<i>Cotinus coggygria</i>	.	sub-shrub	deciduous	1.7	30.3	2817.1	14.6	42.8	500.0	8.7	-0.3	-0.1	31.2	58.0	10.8
<i>Cotoneaster nebrodensis</i>	.	shrub	deciduous	1.6	28.9	599.6	10.2	45.3	2000.0	12.0	-0.8	0.2	16.8	82.0	1.1
<i>Crataegus germanica</i>	.	shrub	evergreen	1.5	34.0	2298.0	25.4	34.2	4000.0	113.7	0.0	0.6	28.3	43.8	27.9
<i>Crataegus laevigata</i>	.	shrub	deciduous	1.5	30.4	817.1	20.0	38.4	3500.0	88.5	-0.3	0.5	17.7	58.4	23.9
<i>Crataegus monogyna</i>	.	shrub	deciduous	2.1	24.9	627.7	9.4	40.8	4000.0	98.0	-0.5	0.6	19.2	80.8	0.0
<i>Cupressus sempervirens</i>	.	tree	evergreen	2.3	17.7	0.6	10.9	30.7	20000.0	8.7	0.0	-0.5	0.0	92.5	7.5
<i>Cytisophyllum sessilifolium</i>	.	shrub	deciduous	5.0	10.5	278.0	22.0	24.9	742.0	15.0	2.0	-0.5	14.0	43.6	42.4
<i>Cytisus emeriflorus</i>	.	sub-shrub	deciduous	3.0	17.1	137.3	19.4	24.2	278.0	8.8	1.1	-1.1	9.4	48.4	42.2
<i>Cytisus hirsutus hirsutus</i>	.	sub-shrub	deciduous	3.8	13.0	780.9	31.1	18.1	450.0	5.5	2.1	-0.8	28.6	8.1	63.3
<i>Cytisus nigricans nigricans</i>	.	sub-shrub	deciduous	3.4	14.3	214.1	14.8	25.8	379.4	4.3	1.1	-0.9	14.1	59.0	26.9
<i>Cytisus purpureus</i>	.	sub-shrub	deciduous	3.8	13.4	217.4	21.6	27.1	158.0	6.7	1.5	-1.1	11.2	55.9	32.9
<i>Cytisus scoparius</i>	.	shrub	evergreen	2.4	19.2	155.4	6.4	27.2	2000.0	9.0	0.1	-0.4	13.9	86.1	0.0
<i>Cytisus spinosus</i>	.	shrub	deciduous	4.2	11.8	111.2	12.8	26.0	2250.0	9.0	1.3	-0.4	9.4	71.7	18.9
<i>Daphne cneorum</i>	.	sub-shrub	deciduous	2.3	22.2	55.0	15.1	29.8	150.0	100.3	0.3	-1.0	3.3	73.2	23.6
<i>Daphne gnidium</i>	.	shrub	deciduous	2.6	18.7	99.5	16.3	23.2	1050.0	7.6	0.8	-0.8	8.6	54.0	37.4
<i>Daphne laureola</i>	.	sub-shrub	deciduous	2.8	16.4	1794.7	11.2	26.0	900.0	35.8	0.7	0.0	44.2	49.5	6.3
<i>Daphne mezereum</i>	.	sub-shrub	deciduous	3.0	15.9	1328.0	37.4	18.0	720.0	85.9	1.9	-0.2	32.6	7.4	60.0
<i>Daphne striata</i>	.	sub-shrub	deciduous	1.9	26.6	43.5	15.0	30.0	85.0	4.9	0.1	-1.6	2.3	78.7	19.1
<i>Dorycnium hirsutum</i>	.	sub-shrub	evergreen	2.0	23.4	428.4	11.9	32.7	300.0	4.1	0.1	-0.8	18.0	73.0	9.0
<i>Dorycnium pentaphyllum pentaphyllum</i>	.	sub-shrub	evergreen	2.6	18.4	95.7	14.4	26.5	450.0	2.9	0.7	-1.1	7.4	67.1	25.5
<i>Elaeagnus pungens</i>	yes	shrub	evergreen	2.9	17.0	2488.4	13.5	33.1	2000.0	16.0	0.6	0.3	36.4	51.7	11.8
<i>Empetrum hermaphroditum</i>	.	sub-shrub	evergreen	1.2	44.1	58.7	6.5	47.9	225.0	1.0	-1.4	-1.2	2.6	97.4	0.0
<i>Empetrum nigrum</i>	.	sub-shrub	evergreen	1.2	48.0	5.7	6.2	36.6	850.0	1.0	-1.3	-1.4	0.0	0	0.0
<i>Erica arborea</i>	.	shrub	evergreen	1.6	34.2	6.5	19.2	44.8	3000.0	0.1	-0.6	-1.3	0.0	75.8	24.2
<i>Erica carnea</i>	.	sub-shrub	evergreen	1.3	39.5	6.4	10.2	32.6	132.0	0.1	-0.7	-2.3	0.0	98.7	1.3
<i>Erica scoparia</i>	.	shrub	evergreen	0.5	122.7	15.3	3.9	52.2	1500.0	0.0	-2.9	-1.4	0.0	0	0.0
<i>Euonymus europaeus</i>	.	shrub	deciduous	2.2	23.1	1916.3	17.2	34.3	3000.0	39.7	0.2	0.4	29.9	51.1	19.0
<i>Euphorbia characias</i>	.	sub-shrub	evergreen	1.6	30.8	518.4	10.6	27.5	900.0	4.1	-0.2	-0.6	26.1	69.3	4.6

**Towards a functional phytosociology: the functional ecology of woody diagnostic species and their vegetation classes in Northern Italy**iForest – Biogeosciences and Forestry – doi: [10.3832/ifer3730-014](https://doi.org/10.3832/ifer3730-014)

species	NEOPHYTES	GROWTH FORM	LEAF LIFE SPAN	LNC (%)	CIN (% / %)	LA (mm <sup>2</sup> )	SLA (mm <sup>2</sup> /mg)	LDMC (%)	CANH (mm)	SM (1000 seeds / gr)	PC1	PC2	C (%)	S (%)	R (%)
<i>Euphorbia dendroides</i>	.	sub-shrub	evergreen	1.8	24.1	276.1	16.5	24.3	2000.0	6.7	0.3	-0.5	16.7	51.1	32.3
<i>Fagus sylvatica</i>	.	tree	deciduous	2.7	16.4	2429.7	19.5	39.0	25000.0	234.0	0.4	1.5	28.6	51.8	19.6
<i>Ficus carica</i>	.	tree	deciduous	3.0	14.3	22632.5	14.5	29.3	6500.0	1.3	1.0	0.6	67.6	24.6	7.8
<i>Frangula alnus</i>	.	shrub	deciduous	3.2	14.3	1665.4	16.0	33.1	3500.0	20.6	0.8	0.4	29.4	52.7	17.9
<i>Fraxinus angustifolia oxycarpa</i>	.	tree	deciduous	3.7	13.9	7193.4	12.8	33.7	12500.0	38.5	0.9	1.2	50.8	41.7	7.6
<i>Fraxinus excelsior</i>	.	tree	deciduous	2.5	16.3	23522.6	13.6	30.6	19000.0	62.8	0.6	1.4	67.5	26.7	5.8
<i>Fraxinus ornus</i>	.	tree	deciduous	2.3	20.4	5241.6	11.9	37.5	5500.0	22.4	0.1	0.8	44.3	50.0	5.7
<i>Fumana ericoides</i>	.	sub-shrub	deciduous	1.6	29.0	12.2	11.7	25.0	90.0	2.4	0.0	-2.0	0.0	82.9	17.1
<i>Fumana laevipes</i>	.	sub-shrub	deciduous	1.0	45.5	8.4	7.2	37.0	100.0	1.2	-1.2	-2.0	0.0	0	0.0
<i>Fumana thymifolia</i>	.	sub-shrub	deciduous	1.8	26.0	15.7	9.5	32.1	200.0	1.2	-0.2	-1.7	0.0	0	0.0
<i>Genista germanica</i>	.	sub-shrub	deciduous	2.0	25.2	52.0	37.5	28.5	334.0	1.4	0.9	-1.5	2.0	45.0	53.0
<i>Genista pilosa</i>	.	sub-shrub	deciduous	1.6	31.3	25.0	11.9	37.9	250.0	2.9	-0.5	-1.3	0.0	90.0	9.9
<i>Genista radiata</i>	.	sub-shrub	evergreen	2.3	22.7	60.3	6.2	44.8	350.0	9.8	-0.6	-0.7	2.9	97.1	0.0
<i>Genista tinctoria sl</i>	.	sub-shrub	deciduous	2.1	23.9	27.0	15.5	26.6	356.0	5.2	0.3	-1.3	0.3	69.3	30.4
<i>Hedera helix</i>	.	climber	deciduous	2.8	18.1	1718.0	31.4	19.1	8000.0	22.7	1.5	0.3	36.5	13.7	49.8
<i>Helianthemum apenninum</i>	.	sub-shrub	evergreen	2.2	21.6	50.7	7.6	33.0	300.0	0.9	-0.1	-1.3	3.3	96.7	0.0
<i>Helianthemum italicum</i>	.	sub-shrub	evergreen	2.2	21.3	89.4	11.7	30.4	110.0	0.5	0.3	-1.7	6.5	81.7	11.8
<i>Helichrysum italicum italicum</i>	.	sub-shrub	evergreen	0.9	47.8	32.7	13.2	13.9	325.0	0.0	-0.2	-2.3	0.4	92.8	6.8
<i>Helichrysum stoechas stoechas</i>	.	sub-shrub	evergreen	1.1	40.0	29.8	12.5	23.2	291.7	0.0	-0.3	-2.2	1.1	74.8	24.1
<i>Hippocrepis emerus emerus</i>	.	sub-shrub	deciduous	4.2	10.5	1060.2	28.3	21.5	524.0	6.1	2.2	-0.6	29.4	24.3	46.3
<i>Hippophaë rhamnoides fluviatilis</i>	.	shrub	deciduous	3.4	14.7	2488.4	13.5	33.1	1050.0	38.0	0.8	0.2	36.4	51.7	11.8
<i>Ilex aquifolium</i>	.	shrub	evergreen	1.3	39.1	2487.5	9.6	29.9	2220.0	36.1	-0.6	0.2	45.2	54.8	0.0
<i>Juglans regia</i>	.	tree	deciduous	2.3	23.6	56528.2	14.3	34.5	12500.0	11490.0	0.1	2.2	73.2	21.5	5.2
<i>Juniperus communis communis</i>	.	shrub	evergreen	1.5	33.0	159.1	7.0	46.8	4250.0	12.5	-1.2	0.2	7.2	92.8	0.0
<i>Juniperus communis nana</i>	.	sub-shrub	evergreen	1.0	51.6	14.2	5.0	48.7	200.0	25.2	-1.9	-1.0	0.0	0	0.0
<i>Juniperus oxycedrus oxycedrus</i>	.	shrub	evergreen	0.7	70.3	40.3	13.4	43.4	3000.0	72.9	-1.7	-0.1	1.3	85.1	13.6
<i>Kalmia procumbens</i>	.	sub-shrub	evergreen	0.9	62.9	11.3	4.2	43.8	7.4	0.0	-1.7	-3.1	0.0	0	0.0
<i>Kerria japonica</i>	yes	shrub	deciduous	2.5	18.9	1956.8	28.1	30.0	1500.0	12.5	1.0	0.0	28.1	39.6	32.4
<i>Laburnum alpinum</i>	.	tree	deciduous	2.4	19.8	4072.6	17.9	30.7	8300.0	26.5	0.6	0.8	41.3	40.4	18.3
<i>Laburnum anagyroides</i>	.	tree	deciduous	2.9	15.0	4083.2	16.3	34.5	3500.0	34.6	0.7	0.7	39.5	45.8	14.7
<i>Larix decidua</i>	.	tree	deciduous	2.3	19.8	25.4	13.7	33.0	24000.0	6.4	0.0	0.0	0.1	81.6	18.3
<i>Laurus nobilis</i>	.	tree	evergreen	1.8	30.0	2059.1	8.7	42.7	5000.0	508.4	-0.8	1.1	31.2	68.8	0.0
<i>Lavandula stoechas</i>	.	sub-shrub	evergreen	1.6	30.8	308.0	9.6	19.8	750.0	0.9	0.0	-1.1	43.1	56.9	0.0
<i>Ligustrum lucidum</i>	yes	tree	evergreen	1.4	34.8	3841.3	7.2	37.6	5500.0	31.0	-0.8	0.7	42.8	57.2	0.0
<i>Ligustrum vulgare</i>	.	sub-shrub	deciduous	1.6	28.9	200.7	12.6	38.9	1050.0	18.8	-0.5	-0.3	9.2	79.9	10.9

**Towards a functional phytosociology: the functional ecology of woody diagnostic species and their vegetation classes in Northern Italy**iForest – Biogeosciences and Forestry – doi: [10.3832/ifer3730-014](https://doi.org/10.3832/ifer3730-014)

species	NEOPHYTES	GROWTH FORM	LEAF LIFE SPAN	LNC (%)	CIN (% / %)	LA (mm <sup>2</sup> )	SLA (mm <sup>2</sup> /mg)	LDMC (%)	CANH (mm)	SM (1000 seeds / gr)	PC1	PC2	C (%)	S (%)	R (%)
<i>Lonicera alpigena</i>	.	shrub	deciduous	1.5	31.0	3512.2	25.3	22.9	770.0	18.6	0.5	-0.2	43.1	24.3	32.6
<i>Lonicera caerulea</i>	.	shrub	deciduous	2.7	18.6	449.0	18.6	26.6	1000.0	1.4	0.9	-0.7	18.3	49.3	32.3
<i>Lonicera caprifolium</i>	.	climber	deciduous	1.5	30.8	1897.7	19.6	29.2	3000.0	15.3	0.1	0.1	32.4	44.3	23.3
<i>Lonicera implexa</i>	.	climber	evergreen	2.0	22.3	2330.3	9.9	28.4	1150.0	9.2	0.2	-0.1	46.4	53.6	0.0
<i>Lonicera japonica</i>	yes	climber	deciduous	1.6	31.8	2413.5	15.0	33.9	3500.0	1.8	-0.2	0.0	34.1	51.4	14.6
<i>Lonicera nigra</i>	.	shrub	deciduous	1.7	28.0	683.2	17.3	32.6	628.0	3.9	0.1	-0.6	19.6	57.8	22.7
<i>Lonicera xylosteum</i>	.	shrub	deciduous	2.7	18.1	2413.5	15.0	33.9	1000.0	3.7	0.6	-0.1	34.1	51.4	14.6
<i>Malus dasycphylla</i>	.	tree	deciduous	1.7	27.7	2347.1	10.3	44.1	9000.0	49.0	-0.7	1.0	31.9	67.2	1.0
<i>Malus sylvestris</i>	.	tree	deciduous	1.2	43.3	1263.7	10.9	37.7	6500.0	25.2	-1.0	0.5	27.3	69.4	3.3
<i>Myricaria germanica</i>	.	shrub	deciduous	4.4	10.8	14.9	20.1	19.5	2000.0	0.0	1.9	-1.6	0.0	34.0	66.0
<i>Myrtus communis</i>	.	shrub	evergreen	1.1	43.0	279.7	7.7	64.7	1500.0	8.4	-2.0	0.2	7.9	92.1	0.0
<i>Olea europaea</i>	.	tree	evergreen	1.6	27.2	623.2	5.3	41.7	6000.0	250.0	-1.0	0.9	19.0	81.0	0.0
<i>Ostrya carpinifolia</i>	.	tree	deciduous	2.5	18.3	2137.3	15.1	42.0	8500.0	7.3	0.2	0.7	28.0	59.4	12.7
<i>Osyris alba</i>	.	sub-shrub	deciduous	3.5	13.4	46.0	17.0	22.0	900.0	111.6	1.2	-0.5	3.4	51.6	45.0
<i>Parthenocissus quinquefolia</i>	yes	climber	deciduous	3.3	15.3	21116.3	26.4	22.3	3500.0	25.2	1.6	0.6	66.4	13.3	20.3
<i>Phillyrea angustifolia</i>	.	shrub	evergreen	0.6	99.9	370.0	6.0	51.0	2000.0	23.4	-2.5	0.1	11.7	88.3	0.0
<i>Phillyrea latifolia</i>	.	shrub	evergreen	1.2	40.9	211.7	6.4	68.0	5500.0	31.6	-2.2	0.8	6.3	93.7	0.0
<i>Picea abies</i>	.	tree	evergreen	1.0	46.2	21.7	6.3	39.0	24000.0	7.0	-1.6	0.0	0.0	0	0.0
<i>Pinus cembra</i>	.	tree	evergreen	1.1	46.9	74.4	4.7	39.8	19000.0	257.0	-1.7	0.7	4.2	95.8	0.0
<i>Pinus halepensis halepensis</i>	.	tree	evergreen	1.1	45.0	53.0	3.5	45.1	12500.0	21.0	-1.8	0.3	2.4	97.6	0.0
<i>Pinus mugo mugo</i>	.	shrub	evergreen	1.4	35.3	123.2	4.0	46.9	3500.0	6.0	-1.5	0.0	5.8	94.2	0.0
<i>Pinus mugo rotundata</i>	.	shrub	evergreen	0.6	90.4	38.0	2.5	46.1	3500.0	8.4	-2.6	-0.3	1.2	98.8	0.0
<i>Pinus mugo uncinata</i>	.	tree	evergreen	0.8	63.7	127.8	4.1	48.5	8500.0	7.9	-2.2	0.2	5.8	94.2	0.0
<i>Pinus nigra laricio</i>	.	tree	evergreen	1.0	49.8	251.5	5.0	40.9	15000.0	19.7	-1.7	0.5	11.2	88.8	0.0
<i>Pinus nigra nigra</i>	.	tree	evergreen	0.5	116.1	167.3	5.4	21.4	8000.0	18.0	-1.9	-0.2	4.5	95.5	0.0
<i>Pinus pinaster</i>	.	tree	evergreen	0.9	53.0	307.5	2.1	43.2	17500.0	47.0	-2.1	0.8	9.5	90.5	0.0
<i>Pinus pinea</i>	.	tree	evergreen	1.0	48.9	244.8	4.0	41.0	16500.0	718.0	-1.8	1.1	11.2	88.8	0.0
<i>Pinus sylvestris</i>	.	tree	evergreen	1.2	43.2	95.6	4.5	41.5	17500.0	6.0	-1.6	0.3	5.2	94.8	0.0
<i>Pistacia lentiscus</i>	.	shrub	deciduous	1.1	45.9	1818.4	7.5	43.3	3500.0	25.7	-1.3	0.5	29.5	70.5	0.0
<i>Pistacia terebinthus</i>	.	shrub	deciduous	3.1	16.6	10691.3	18.3	31.3	3000.0	40.8	0.9	0.7	54.8	33.8	11.4
<i>Polygala chamaebuxus</i>	.	sub-shrub	deciduous	1.3	41.5	145.8	11.0	22.5	112.0	7.8	-0.3	-1.5	18.6	73.1	8.3
<i>Populus alba</i>	.	tree	deciduous	2.6	19.9	3953.7	12.5	37.8	17500.0	0.1	0.3	0.4	40.3	52.3	7.4
<i>Populus nigra</i>	.	tree	deciduous	2.1	21.5	1422.0	10.8	40.3	17500.0	1.1	-0.2	0.5	27.3	69.3	3.3
<i>Populus tremula</i>	.	tree	deciduous	2.2	19.2	2743.2	9.2	44.2	12500.0	0.1	-0.2	0.3	33.9	66.1	0.0
<i>Prunus avium</i>	.	tree	deciduous	2.4	18.1	4837.9	12.6	36.8	11500.0	183.0	0.2	1.3	43.1	49.6	7.3
<i>Prunus cerasifera</i>	.	tree	deciduous	1.8	27.6	2044.4	23.2	38.7	4750.0	437.0	0.0	1.0	25.7	50.9	23.4
<i>Prunus cerasus</i>	.	tree	deciduous	2.2	20.3	2736.5	8.4	35.9	7500.0	164.4	-0.2	1.0	39.6	60.4	0.0



**Towards a functional phytosociology: the functional ecology of woody diagnostic species and their vegetation classes in Northern Italy**iForest – Biogeosciences and Forestry – doi: [10.3832/ifer3730-014](https://doi.org/10.3832/ifer3730-014)

species	NEOPHYTES	GROWTH FORM	LEAF LIFE SPAN	LNC (%)	CIN (% / %)	LA (mm <sup>2</sup> )	SLA (mm <sup>2</sup> /mg)	LDMC (%)	CANH (mm)	SM (1000 seeds / gr)	PC1	PC2	C (%)	S (%)	R (%)
<i>Prunus laurocerasus</i>	.	shrub	deciduous	1.3	39.5	4975.7	6.6	38.8	5000.0	287.0	-1.1	1.1	45.0	55.0	0.0
<i>Prunus mahaleb</i>	.	shrub	deciduous	2.2	23.3	511.0	13.0	40.5	3000.0	83.0	-0.2	0.5	15.6	75.0	9.4
<i>Prunus padus</i>	.	tree	deciduous	2.2	22.9	2967.9	22.1	35.7	8500.0	84.0	0.3	0.9	31.5	45.6	22.9
<i>Prunus serotina</i>	yes	tree	deciduous	2.6	18.3	2079.8	15.4	40.7	8500.0	83.9	0.2	1.0	28.2	58.9	12.9
<i>Prunus spinosa</i>	.	shrub	deciduous	2.9	15.5	147.1	15.9	37.1	1750.0	175.0	0.5	0.2	6.9	72.3	20.8
<i>Punica granatum</i>	.	shrub	deciduous	1.2	36.1	440.3	12.2	45.2	3000.0	26.3	-1.0	0.3	13.3	78.6	8.2
<i>Pyracantha coccinea</i>	.	shrub	deciduous	1.5	33.4	355.1	10.9	42.9	1250.0	11.0	-0.8	-0.2	12.8	82.8	4.4
<i>Pyrus communis communis</i>	.	tree	deciduous	1.8	25.4	2750.8	9.5	45.0	12500.0	32.0	-0.7	1.1	33.4	66.6	0.0
<i>Quercus cerris</i>	.	tree	deciduous	2.7	17.4	3672.6	13.6	41.5	13500.0	4263.0	0.1	1.8	35.7	55.4	9.0
<i>Quercus ilex</i>	.	tree	evergreen	1.8	29.5	1586.4	13.6	42.2	10500.0	2311.0	-0.6	1.5	25.4	64.0	10.6
<i>Quercus petraea</i>	.	tree	deciduous	2.3	20.4	7196.3	14.0	38.6	17500.0	2342.2	0.0	1.9	45.8	45.2	9.0
<i>Quercus pubescens</i>	.	tree	deciduous	2.4	20.2	4364.2	10.3	42.0	8500.0	633.7	-0.2	1.5	40.8	58.5	0.8
<i>Quercus robur robur</i>	.	tree	deciduous	2.2	21.2	4963.0	11.7	44.7	17500.0	3378.0	-0.4	2.0	39.2	55.8	5.0
<i>Quercus suber</i>	.	tree	deciduous	1.4	35.5	1603.2	12.1	42.4	10000.0	3469.0	-1.0	1.5	26.6	67.1	6.3
<i>Quercus virgiliana</i>	.	tree	deciduous	1.7	29.2	4419.8	12.6	45.6	15000.0	1239.0	-0.7	1.7	36.9	57.0	6.2
<i>Rhamnus alaternus</i>	.	shrub	deciduous	1.8	25.7	663.0	7.5	40.4	3000.0	9.6	-0.6	0.2	19.9	80.1	0.0
<i>Rhamnus carthartica</i>	.	shrub	deciduous	3.0	16.7	1513.8	18.0	33.8	3500.0	15.9	0.8	0.4	26.9	52.1	21.1
<i>Rhamnus saxatilis saxatilis</i>	.	sub-shrub	deciduous	2.7	16.8	158.8	11.5	42.6	392.0	10.1	0.1	-0.5	7.5	86.8	5.7
<i>Rhododendron ferrugineum</i>	.	sub-shrub	evergreen	1.4	35.1	293.5	6.7	44.0	650.0	0.0	-1.0	-1.2	11.7	88.3	0.0
<i>Rhododendron hirsutum</i>	.	sub-shrub	evergreen	1.0	54.7	245.9	8.5	48.5	550.0	0.0	-1.5	-1.2	9.6	90.4	0.0
<i>Rhodothamnus chamaecistus</i>	.	sub-shrub	deciduous	1.4	36.1	27.3	8.6	45.9	91.0	0.0	-0.9	-2.4	0.2	99.8	0.0
<i>Robinia pseudoacacia</i>	yes	tree	deciduous	3.7	12.6	11289.3	17.8	32.6	8500.0	19.2	1.2	1.0	53.2	33.1	13.7
<i>Rosa agrestis</i>	.	sub-shrub	deciduous	2.2	20.9	1546.2	15.2	31.1	2000.0	18.0	0.4	0.1	30.5	51.8	17.6
<i>Rosa arvensis</i>	.	sub-shrub	deciduous	1.2	37.8	1380.5	35.8	33.0	854.0	13.3	0.2	-0.3	21.2	41.9	37.0
<i>Rosa canina</i>	.	sub-shrub	deciduous	1.2	43.2	202.4	10.5	43.1	1150.0	16.0	-1.1	-0.2	9.1	88.3	2.7
<i>Rosa dumalis</i>	.	sub-shrub	deciduous	1.7	30.1	1857.2	10.1	41.5	1888.0	19.2	-0.6	0.3	30.8	68.4	0.8
<i>Rosa pendulina</i>	.	sub-shrub	deciduous	2.4	20.2	1011.6	18.9	36.4	750.0	17.3	0.4	-0.1	20.9	57.0	22.1
<i>Rosa rubiginosa</i>	.	sub-shrub	deciduous	2.2	22.7	763.9	14.0	37.9	2000.0	15.6	0.0	0.1	19.7	66.5	13.8
<i>Rosmarinus officinalis</i>	.	sub-shrub	evergreen	0.8	68.3	62.5	7.7	38.7	950.0	1.0	-1.6	-1.0	3.6	96.4	0.0
<i>Rubus caesius</i>	.	sub-shrub	deciduous	2.3	19.6	9735.6	29.0	24.8	1500.0	3.6	1.2	0.0	52.6	20.7	26.6
<i>Rubus hirtus</i>	.	sub-shrub	deciduous	2.1	20.1	15702.9	19.1	35.7	2000.0	4.3	0.5	0.4	55.1	31.5	13.4
<i>Rubus idaeus</i>	.	sub-shrub	deciduous	2.3	19.4	3786.8	16.9	34.2	1500.0	1.7	0.5	-0.1	38.6	45.8	15.6
<i>Rubus praecox</i>	.	sub-shrub	deciduous	2.6	17.9	12663.3	14.9	36.4	1000.0	2.7	0.6	0.2	53.9	37.2	8.8
<i>Rubus ulmifolius</i>	.	sub-shrub	deciduous	2.6	18.8	9229.4	13.1	35.6	1000.0	2.5	0.5	0.1	52.2	40.9	7.0
<i>Ruscus aculeatus</i>	.	sub-shrub	evergreen	1.7	29.1	225.4	8.1	38.2	402.0	188.5	-0.6	-0.2	11.4	88.6	0.0
<i>Salix alba</i>	.	tree	deciduous	2.3	20.5	1762.9	10.7	38.1	11500.0	0.1	0.0	0.1	31.1	65.5	3.3
<i>Salix appendiculata</i>	.	shrub	deciduous	2.1	22.9	2382.7	10.5	43.4	3500.0	0.1	-0.2	-0.1	32.1	65.8	2.1

**Towards a functional phytosociology: the functional ecology of woody diagnostic species and their vegetation classes in Northern Italy**iForest – Biogeosciences and Forestry – doi: [10.3832/ifor3730-014](https://doi.org/10.3832/ifor3730-014)

species	NEOPHYTES	GROWTH FORM	LEAF LIFE SPAN	LNC (%)	CIN (% / %)	LA (mm <sup>2</sup> )	SLA (mm <sup>2</sup> /mg)	LDMC (%)	CANH (mm)	SM (1000 seeds / gr)	PC1	PC2	C (%)	S (%)	R (%)
<i>Salix babylonica</i>	yes	tree	deciduous	2.4	18.4	1941.4	14.2	34.3	7500.0	0.2	0.4	0.0	31.7	54.9	13.4
<i>Salix caesia</i>	.	sub-shrub	deciduous	3.9	13.1	302.0	20.6	29.7	750.0	0.1	1.5	-1.1	12.7	55.5	31.8
<i>Salix capreae</i>	.	shrub	deciduous	2.3	19.3	3651.2	9.8	41.2	4500.0	0.3	0.0	0.1	39.3	60.7	0.0
<i>Salix cinerea</i>	.	shrub	deciduous	2.3	22.5	1716.4	14.7	32.0	3500.0	0.2	0.4	-0.3	31.9	52.7	15.4
<i>Salix eleagnos eleagnos</i>	.	tree	deciduous	2.6	19.0	545.3	12.7	29.2	8000.0	0.5	0.5	-0.2	22.4	63.7	13.9
<i>Salix foetida</i>	.	sub-shrub	deciduous	2.5	18.7	124.0	10.5	39.0	650.0	0.1	0.1	-1.2	6.9	89.3	3.8
<i>Salix glabra</i>	.	sub-shrub	deciduous	3.2	14.7	309.4	20.5	31.0	1000.0	0.1	1.2	-1.0	12.2	56.1	31.7
<i>Salix hastata</i>	.	sub-shrub	deciduous	3.1	15.6	1214.1	10.3	39.3	1000.0	0.1	0.5	-0.6	26.7	71.9	1.4
<i>Salix helvetica</i>	.	sub-shrub	deciduous	3.5	13.5	218.8	18.5	29.9	550.0	0.1	1.3	-1.2	10.6	59.0	30.5
<i>Salix myrsinifolia</i>	.	sub-shrub	deciduous	3.0	17.7	618.7	24.1	25.9	3000.0	0.1	1.2	-0.7	21.1	38.8	40.0
<i>Salix pentandra</i>	.	shrub	deciduous	3.5	14.8	612.3	13.9	28.2	5500.0	0.2	1.0	-0.4	23.3	58.1	18.6
<i>Salix purpurea</i>	.	shrub	deciduous	2.3	22.6	623.4	12.8	39.2	4500.0	0.2	0.0	-0.3	17.8	71.4	10.9
<i>Salix rosmarinifolia</i>	.	sub-shrub	deciduous	2.6	18.3	360.8	12.4	40.2	300.0	0.2	0.3	-1.1	13.2	77.0	9.8
<i>Salix triandra triandra</i>	.	shrub	deciduous	2.8	17.0	1672.7	27.1	26.1	3000.0	0.0	1.4	-0.8	29.3	33.9	36.7
<i>Salix waldsteiniana</i>	.	sub-shrub	deciduous	3.2	16.3	307.1	19.7	29.6	350.0	0.1	1.1	-1.4	12.9	55.5	31.6
<i>Sambucus nigra</i>	.	shrub	deciduous	3.1	13.7	5525.1	16.0	24.8	4500.0	12.0	1.2	0.5	54.0	29.2	16.8
<i>Sambucus racemosa</i>	.	shrub	deciduous	4.6	9.1	16974.6	14.7	22.2	3000.0	2.4	1.9	0.3	73.8	16.3	9.9
<i>Smilax aspera</i>	.	climber	evergreen	1.3	36.9	1394.4	9.6	37.0	2500.0	40.0	-0.8	0.3	30.3	69.7	0.0
<i>Sorbaria sorbifolia</i>	yes	shrub	deciduous	2.8	18.8	36192.6	26.5	31.6	2000.0	50.3	1.1	0.8	64.2	20.5	15.3
<i>Sorbus aria</i>	.	tree	deciduous	1.9	26.5	5070.5	17.1	37.0	6900.0	92.0	-0.1	1.0	40.2	45.8	14.0
<i>Sorbus aucuparia sl</i>	.	tree	deciduous	1.2	41.3	10094.5	13.3	35.4	6000.0	7.0	-0.6	0.6	53.2	40.2	6.6
<i>Sorbus chamaemespilus</i>	.	sub-shrub	deciduous	2.7	17.4	1527.9	13.9	33.5	1000.0	16.7	0.5	0.0	29.6	56.9	13.5
<i>Sorbus domestica</i>	.	tree	deciduous	1.7	27.0	6223.8	21.1	41.4	12500.0	18.4	-0.1	1.0	38.2	44.5	17.3
<i>Sorbus torminalis</i>	.	tree	deciduous	2.0	23.3	4858.0	16.1	46.0	8500.0	53.0	-0.3	1.2	35.4	52.9	11.7
<i>Spiraea japonica</i>	yes	shrub	deciduous	2.6	19.3	3052.5	35.7	31.4	1000.0	0.1	1.3	-0.8	30.3	35.4	34.4
<i>Syringa vulgaris</i>	.	shrub	deciduous	2.4	18.8	3988.7	12.3	35.4	4000.0	5.6	0.3	0.4	41.9	51.0	7.1
<i>Taxus baccata</i>	.	tree	evergreen	1.3	36.6	53.7	5.0	45.5	12500.0	60.6	-1.6	0.5	2.4	97.6	0.0
<i>Teucrium capitatum</i>	.	sub-shrub	deciduous	2.0	25.6	74.6	11.5	26.6	140.0	1.7	0.2	-1.6	7.0	83.0	10.0
<i>Thymus vulgaris</i>	.	sub-shrub	evergreen	2.4	20.0	10.3	19.9	17.4	250.0	1.4	1.0	-1.9	0.0	16.4	83.6
<i>Tilia cordata</i>	.	tree	deciduous	1.1	47.1	4080.5	15.7	33.2	13500.0	34.0	-0.7	0.9	41.2	44.8	14.0
<i>Tilia platyphyllos</i>	.	tree	deciduous	4.3	11.6	8432.3	25.3	27.7	17500.0	94.8	1.7	1.3	49.4	27.5	23.2
<i>Tilia tomentosa</i>	.	tree	deciduous	2.5	17.7	6839.9	14.0	34.3	13500.0	103.4	0.4	1.3	48.5	42.2	9.3
<i>Trachycarpus fortunei</i>	yes	tree	evergreen	2.2	24.0	776815.9	6.4	44.6	8500.0	181.3	-0.4	2.2	77.9	22.1	0.0
<i>Ulmus glabra</i>	.	tree	deciduous	2.5	17.4	8110.0	9.6	39.4	10000.0	12.8	0.1	1.0	51.3	48.7	0.0
<i>Ulmus laevis</i>	.	tree	deciduous	2.4	18.2	5345.4	11.1	42.5	12500.0	6.9	0.0	1.0	42.1	54.8	3.1
<i>Ulmus minor</i>	.	tree	deciduous	2.6	16.9	2104.6	15.3	28.8	13500.0	5.1	0.7	0.5	36.5	45.8	17.8
<i>Vaccinium gaultherioides</i>	.	sub-shrub	deciduous	3.8	12.4	120.0	22.0	28.0	150.0	0.3	1.6	-1.6	6.6	54.1	39.2

Zanzottera M, Dalle Fratte M, Caccianiga M, Pierce S, Cerabolini BEL (2021).

**Towards a functional phytosociology: the functional ecology of woody diagnostic species and their vegetation classes in Northern Italy**

iForest – Biogeosciences and Forestry – doi: [10.3832/ifor3730-014](https://doi.org/10.3832/ifor3730-014)

species	NEOPHYTES	GROWTH FORM	LEAF LIFE SPAN								PC1		C (%)	S (%)	R (%)
				LNC (%)	CIN (% / %)	LA (mm <sup>2</sup> )	SLA (mm <sup>2</sup> /mg)	LDMC (%)	CANH (mm)	SM (1000 seeds / gr)	PC2				
<i>Vaccinium myrtillus</i>	.	sub-shrub	deciduous	1.8	29.0	399.2	29.9	28.3	205.0	0.3	0.7	-1.5	13.2	43.9	42.9
<i>Vaccinium uliginosum</i>	.	sub-shrub	deciduous	2.8	18.9	206.6	16.2	30.2	150.0	0.3	0.8	-1.5	10.7	63.7	25.6
<i>Vaccinium vitis-idaea</i>	.	sub-shrub	evergreen	0.9	52.8	253.3	6.0	47.9	200.0	0.3	-1.6	-1.2	9.8	90.2	0.0
<i>Viburnum lantana</i>	.	shrub	deciduous	1.6	27.8	3042.1	9.7	36.3	2000.0	48.0	-0.4	0.5	40.9	59.1	0.0
<i>Viburnum opulus</i>	.	shrub	deciduous	2.1	22.1	6091.9	17.5	33.5	2000.0	33.3	0.3	0.5	44.6	40.0	15.4
<i>Viburnum tinus</i>	.	shrub	deciduous	1.6	34.0	2480.2	16.1	32.0	2000.0	61.3	-0.2	0.3	35.3	50.0	14.7