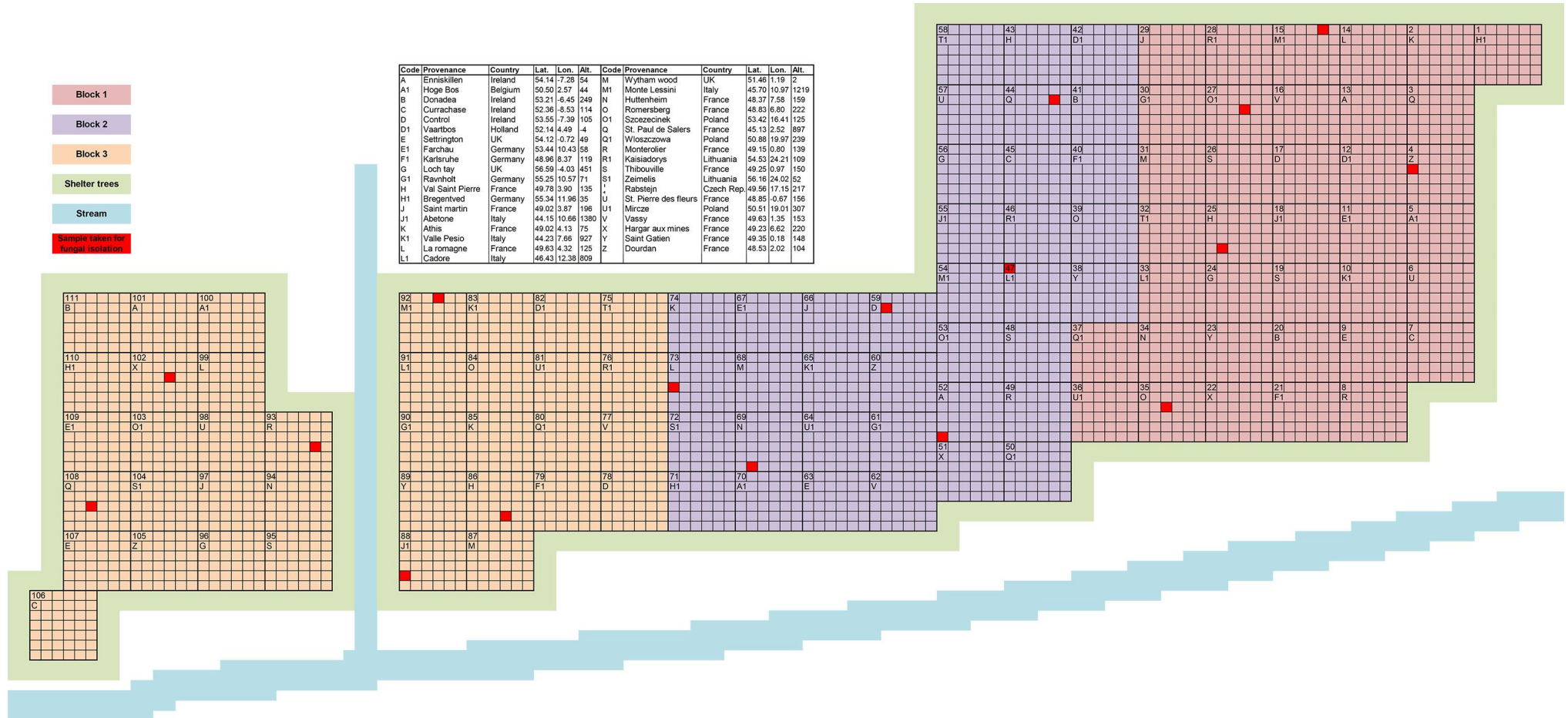


Lenticel infection in shoots in the context of ash dieback

iForest – Biogeosciences and Forestry – doi: [10.3832/ifer2897-012](https://doi.org/10.3832/ifer2897-012)

Supplementary Material

Fig. S1 - Information about the RAP trial in Slatta, Co. Roscommon (Ireland), 53.79 N, 7.98 W.



Lenticel infection in shoots in the context of ash dieback

iForest – Biogeosciences and Forestry – doi: [10.3832/ifor2897-012](https://doi.org/10.3832/ifor2897-012)

Fig. S2 - Scoring for each tree in the RAP trial in Roosky for the presence (red) or absence (green) of lenticel necrosis, shoot dieback and canker lesion.



Lenticel infection in shoots in the context of ash diebackiForest – Biogeosciences and Forestry – doi: [10.3832/ifor2897-012](https://doi.org/10.3832/ifor2897-012)**Tab. S1** - Geographic information and mean bud burst values for each of the 37 provenances in the study and statistical categories after the ANOVA analysis.

Code	Provenance	Country	Latitude	Longitude	Altitude	AVG budburst	Statistical category
K1	Valle Pesio	Italy	44.23	7.66	927	3.58	A
U	St. Pierre des fleurs	France	48.85	-0.67	156	3.52	A B
H	Val Saint Pierre	France	49.78	3.90	135	3.33	A B C
M1	Monte Lessini	Italy	45.70	10.97	1219	3.30	A B C D
Y	Saint Gatien	France	49.35	0.18	148	3.26	A B C D
J1	Abetone	Italy	44.15	10.66	1380	3.26	A B C D
R	Monterolier	France	49.15	0.80	139	3.25	A B C D
S	Thibouville	France	49.25	0.97	150	3.23	A B C D
X	Hargar aux mines	France	49.23	6.62	220	3.15	B C D E
K	Athis	France	49.02	4.13	75	3.01	C D E F
S1	Zeimelis	Lithuania	56.16	24.02	52	2.97	C D E F
Z	Dourdan	France	48.53	2.02	104	2.97	C D E F
Q	St. Paul de Salers	France	45.13	2.52	897	2.97	C D E F
V	Vassy	France	49.63	1.35	153	2.97	C D E F
M	Wytham wood	United Kingdom	51.46	1.19	2	2.91	C D E F G
J	Saint martin	France	49.02	3.87	196	2.90	D E F G
N	Huttenheim	France	48.37	7.58	159	2.89	D E F G
T1	Rabstejn	Czech Republic	49.56	17.15	217	2.79	E F G H
D1	Vaartbos	Holland	52.14	4.50	-4	2.74	E F G H I
F1	Karlsruhe	Germany	48.96	8.37	119	2.70	F G H I
L1	Cadore	Italy	46.43	12.38	809	2.67	F G H I
O	Romersberg	France	48.83	6.80	222	2.50	G H I J
L	La romagne	France	49.63	4.32	125	2.44	H I J K
Q1	Wloszczowa	Poland	50.88	19.97	239	2.37	H I J K L
G1	Ravnholt	Germany	55.25	10.57	71	2.35	I J K L
B	Donadea	Ireland	53.21	-6.45	249	2.23	J K L M
O1	Szczecinek	Poland	53.42	16.41	125	2.16	J K L M
C	Currachase	Ireland	52.36	-8.53	114	2.14	J K L M
U1	Mircze	Poland	50.51	19.01	307	2.12	J K L M
E1	Farchau	Germany	53.44	10.43	58	2.08	J K L M
A1	Hoge Bos	Belgium	50.50	2.57	44	2.06	K L M
R1	Kaisiadorys	Lithuania	54.53	24.21	109	2.06	K L M
D	Control	Ireland	53.55	-7.39	105	2.05	K L M
A	Enniskillen	Ireland	54.14	-7.28	54	2.03	K L M
H1	Bregentved	Germany	55.34	11.96	35	2.00	L M
E	Settrington	United Kingdom	54.12	-0.72	49	1.96	L M
G	Loch tay	United Kingdom	56.59	-4.03	451	1.81	M