

Hemlock woolly adelgid niche models from the invasive eastern North American range with projections to native ranges and future climates

Tuula Kantola, James L. Tracy, Päivi Lyytikäinen-Saarenmaa, Hannu Saarenmaa, Robert N. Coulson, Antonio Trabucco, and Markus Holopainen

Supplementary Material

GIS data sources

Hemlock range GIS data sources

Farjon, A (1990). Pinaceae: Drawings and Descriptions of the Genera *Abies*, *Cedrus*, *Pseudolarix*, *Keteleeria*, *Nothotsuga*, *Tsuga*, *Cathaya*, *Pseudotsuga*, *Larix* and *Picea*. Koeltz Scientific Books, Königstein, Germany.

Holman G, Del Tredici P, Havill N, Lee NS, Cronn R, Cushman K, Mathews S, Raubeson L, Campbell CS (2017). A New Species and Introgression in Eastern Asian Hemlocks (Pinaceae: *Tsuga*). *Systematic Botany*. 42(4): 733-746.

Little, EL (1971). Atlas of United States Trees, Volume 1: Conifers and Important Hardwoods. USDA Miscellaneous Publication 1146. Shapefiles available at: <https://web.archive.org/web/20170127093428/https://gec.cr.usgs.gov/data/little/> (25 July 2018)

Hemlock woolly adelgid occurrence GIS data sources

Canadian Food Inspection Agency. (2018) Hemlock woolly adelgid locations in Nova Scotia, Canada. RJ Neville, personal communication.

deHaas, T. (2018) Hemlock woolly adelgid in Lake and Geauga County, Ohio. 8 February 2018, Buckeye Yard and Garden online, Ohio State University. Available at: <https://bygl.osu.edu/index.php/node/972> (25 July 2018)

Fidgen, JG, Turgeon JJ, Allison JD, Humble LM. (2014) Alien, invasive hemlock woolly adelgid found in Ontario. Technical Note No. 114, Great Lakes Forestry Centre, Canadian Forest Service. Available at: http://publications.gc.ca/collections/collection_2015/rncan-rncan/Fo123-1-114-eng.pdf (25 July 2018)

Global Biodiversity Information Facility (GBIF) (2018) Explore Species. Available at: <http://www.gbif.org/species> (25 July 2018)

Havill NP, Shiyake S, Lamb Galloway A, Footitt RG, Yu G, Paradis A, Elkinton J, Montgomery ME, Sano M, Caccone A (2016). Ancient and modern colonization of North America by

hemlock woolly adelgid, *Adelges tsugae* (Hemiptera: Adelgidae), an invasive insect from East Asia. *Molecular Ecology* 25: 2065-2080. NP Havill, personal communication.

iNaturalist.org (2018) Hemlock woolly adelgid (*Adelges tsugae*). Available at: <https://www.inaturalist.org/taxa/61513-Adelges-tsugae> (25 July 2018)

Kentucky Division of Forestry (2018). Hemlock woolly adelgid treatment locations. Abe Nielsen, personal communication.

Kohler GR, Stiefel VL, Wallin KF, Ross DW (2008). Predators associated with the hemlock woolly adelgid (Hemiptera: Adelgidae) in the Pacific Northwest. *Environmental Entomology* 37:494-504.

Mausel DL. (2007) Release and Monitoring of *Laricobius nigrinus* (Coleoptera: Derodontidae) for biological control of the hemlock woolly adelgid in the eastern US. PhD Dissertation, Virginia Polytechnic Institute and State University, Blacksburg, Virginia. Available at: https://vtechworks.lib.vt.edu/bitstream/handle/10919/29785/Mausel_ETD.pdf?s (25 July 2018)

McAvoy TJ, Régnière J, St-Amant R, Schneeberger NF, Salom SM (2017). Mortality and recovery of hemlock woolly adelgid (*Adelges tsugae*) in response to winter temperatures and predictions for the future. *Forests* 8(12): 497. ME McAvoy, personal communication.

Michigan Department of Agriculture (2018). Hemlock Woolly Adelgid (HWA) Infestation History in Michigan; 2015-2017. Available at: https://www.michigan.gov/documents/mdard/Hemlock_Woolly_Adelgid_Infestation_History_in_Michigan_500168_7.pdf (25 July 2018)

Montgomery ME, Keena MA (2011). *Scymnus* (*Neopullus*) lady beetles from China. In: “Implementation and status of biological control of the hemlock woolly adelgid” (Onken B, Reardon R eds). USDA Forest Service, Forest Health Technology Enterprise Team, FHTET-2011-04, Morgantown, West Virginia, pp. 53-76. Available at: https://www.fs.fed.us/nrs/pubs/jrnl/2011/nrs_2011_montgomery_002.pdf (25 July 2018). ME Montgomery, personal communication.

Montgomery ME, Shiyake S, Havill NP, Leschen RA (2011). A new species of *Laricobius* (Coleoptera: Derodontidae) from Japan with phylogeny and a key for native and introduced congeners in North America. *Annals of the Entomological Society of America*. 104:389-401. ME Montgomery, personal communication.

Ohio Department of Natural Resources (2018). County level infestation map. <http://ohiodnr.gov/hemlock-woolly-adelgid-in-ohio/learn-more-about-hwa/post/updated-infestation-map> (25 July 2018). T Macy, personal communication.

Purdue University Pest Tracker (2018). Exotic Pest Reporting Maps. <http://pest.ceris.purdue.edu/map.php?code=IRAZAHA> (25 July 2018)

- Sharma KK, Subedi IP, Thapa VK (2013). Predatory insects of *Adelges tsugae* Annand (Homoptera: Adelgidae) at Dhungharka, Kavrepalanchok, Nepal. *Nepalese Journal of Zoology* 1:59-69.
- Sorg, L (2012) How the hemlock woolly adelgid threatens the N.C. mountains. 27 July 2012, INDY week. Available at: <https://www.indyweek.com/indyweek/how-the-hemlock-woolly-adelgid-threatens-the-nc-mountains/Content?oid=3094079> (25 July 2018)
- Tennessee Department of Agriculture. (2018) Hemlock woolly adelgid treatment grids. N Hoover, personal communication.
- USDA Forest Service (2016). County Level Infestation Map, 2016. Available at: https://www.fs.usda.gov/naspf/sites/default/files/naspf/pdf/2015_hwa_infestation_map_2016_0502.pdf (25 July 2018)
- USDA Forest Service (2018). County Level Infestation Map, 2018. Available at: <http://hiro.ento.vt.edu/arcgis/rest/services> (25 July 2018)
- Virginia Polytechnic Institute and State University (2018) HWA Predator Database: Hemlock Woolly Adelgid. Available at: <http://hiro.ento.vt.edu/pdb/> (25 July 2018)
- New Hampshire Division of Forests and Lands (2018) Hemlock woolly adelgid locations in New Hampshire. J. Weimer, personal communication.
- West Virginia Department of Agriculture Plant Industries. (2018) Hemlock woolly adelgid treatment locations. Kristen Carrington, personal communication.
- Zimmer, DM (2017) West coast beetle saving East Coast's hemlocks. 28 September 2017, northjersey.com. Available at <https://www.northjersey.com/story/news/environment/2017/09/28/west-coast-beetle-saving-east-coasts-hemlocks/708989001/> (25 July 2018)

Environmental predictors (Table S1)

- Evans JS, Oakleaf J, Cushman SA, Theobald D (2014) An ArcGIS Toolbox for Surface Gradient and Geomorphometric Modeling, version 2.0-0. Available from: <https://www.arcgis.com/home/item.html?id=63ffcecf3b2a45bf99a84cdaedefaccf> (13 December, 2016)
- Hengl T, de Jesus JM, Heuvelink GB, Gonzalez MR, Kilibarda M, Blagotić A, Shangguan W, Wright MN, Geng X, Bauer-Marschallinger B, Guevara MA (2017) SoilGrids250m: Global gridded soil information based on machine learning. *PLoS one* 12(2):e0169748.
- Hijmans RJ, Cameron SE, Parra JL, Jones PG, Jarvis A (2005) A very high resolution interpolated climate surfaces for global land areas. *International Journal Climatology* 25:1965–1978

- Lehner B, Verdin K, Jarvis A (2008) New global hydrography derived from spaceborne elevation data. *Eos* 89:93-94.
- Trabucco A, Zomer RJ (2010) Global Soil Water Balance Geospatial Database. Consultive Group on International Agricultural Research (CGIAR)- Consortium for Spatial Information, Washington, DC. Available at: <http://www.cgiar-csi.org/data/global-high-resolution-soil-water-balance> (11 January 2017).
- WorldClim (2017) Global climate data. Available at: <http://www.worldclim.org/version1> (12 March 2017).
- Zomer RJ, Trabucco A, Bossio DA, van Straaten O, Verchot LV (2008) Climate change mitigation: A spatial analysis of global land suitability for clean development Mechanism Afforestation and Reforestation. *Agric Ecosyst Environ* 126: 67-80. Publication and data available from CGIAR Consortium for Spatial Information- Global aridity and PET database: <http://www.cgiar-csi.org/data/global-aridity-and-pet-database> (11 January 2017).
- Zomer RJ, Bossio DA, Trabucco A, Yuanjie L, Gupta DC, Singh VP (2007) Trees and water: smallholder agroforestry on irrigated lands in northern India. Colombo, Sri Lanka: International Water Management Institute. pp 45. (IWMI Research Report 122). Publication and data available from CGIAR Consortium for Spatial Information- Global aridity and PET database: <http://www.cgiar-csi.org/data/global-aridity-and-pet-database> (11 January 2017).

Tables

Tab. S1 - One hundred nineteen environmental predictor indices (1 km resolution) used in developing 12 selected MaxEnt hemlock woolly adelgid niche models with six of 119 variables.^a

Variable Index (Source)	Grid Name Abbreviation	Variable Frequency in 12 Selected Models (% of 72) ^b
79 Climatic Indices (for 1960–1990 derived from WorldClim [2017] of Hijmans et al. [2005])		
19 Bioclim Indices (WorldClim 2017)		
Annual mean temperature	<i>bio_1</i>	0 (0.0)
Mean diurnal range (mean of monthly TMAX – TMIN)	<i>bio_2</i>	0 (0.0)
Isothermality (<i>bio_2/bio_7</i>) (× 100)	<i>bio_3</i>	0 (0.0)
Temperature seasonality (standard deviation × 100)	<i>bio_4</i>	1 (1.4)
Maximum temperature of warmest month	<i>bio_5</i>	0 (0.0)
Minimum temperature of coldest month	<i>bio_6</i>	0 (0.0)
Temperature annual range (<i>bio_5</i> – <i>bio_6</i>)	<i>bio_7</i>	0 (0.0)
Mean temperature of wettest quarter	<i>bio_8</i>	2 (2.8)
Mean temperature of driest quarter	<i>bio_9</i>	0 (0.0)
Mean temperature of warmest quarter	<i>bio_10</i>	0 (0.0)
Mean temperature of coldest quarter	<i>bio_11</i>	0 (0.0)
Annual precipitation	<i>bio_12</i>	0 (0.0)
Precipitation of wettest month	<i>bio_13</i>	0 (0.0)
Precipitation of driest month	<i>bio_14</i>	0 (0.0)
Precipitation seasonality (coefficient of variation)	<i>bio_15</i>	1 (1.4)
Precipitation of wettest quarter	<i>bio_16</i>	0 (0.0)
Precipitation of driest quarter	<i>bio_17</i>	0 (0.0)
Precipitation of warmest quarter	<i>bio_18</i>	1 (1.4)
Precipitation of coldest quarter	<i>bio_19</i>	1 (1.4)
Subtotal		6 (8.3)
36 Monthly Temperature/Precipitation Indices (WorldClim 2017)		
Mean monthly minimum temperature (12)	<i>tmin_1</i> - <i>tmin_12</i>	<i>tmin_10</i> - 1 (1.4); 11 × 0 (0.0)

Tab. S1 (Cont.)- One hundred nineteen environmental predictor indices (1 km resolution) used in developing 12 selected MaxEnt hemlock woolly adelgid niche models with six of 119 variables.^a

Variable Index (Source)	Variable Index (Source)	Variable Index (Source)
Mean monthly maximum temperature (12)	<i>tmax_1</i> - <i>tmax_12</i>	<i>tmax_1</i> - 1 (1.4); <i>tmax_2</i> - 2 (2.8); <i>tmax_3</i> - 1 (1.4); 9 × 0 (0.0)
Mean monthly rainfall (50%) (12)	<i>prec_1</i> - <i>prec_12</i>	<i>prec_1</i> - 3 (4.2); <i>prec_2</i> - 2 (2.8); 10 × 0 (0.0)
Subtotal		10 (13.8)
24 Monthly Actual and Potential Evapotranspiration (AET-PET) Indices (PET; Zomer et al. 2007; 2008; AET; Trabucco and Zomer 2010)		
Mean monthly AET (12)	<i>aet_1</i> - <i>aet_12</i>	<i>aet_2</i> - 1 (1.4); <i>aet_6</i> - 1 (1.4); <i>aet_7</i> - 1 (2.8); 9 × 0 (0.0)
Mean monthly PET (12)	<i>pet_1</i> - <i>pet_12</i>	<i>pet_1</i> - 1 (1.4); <i>pet_3</i> - 2 (2.8); <i>pet_7</i> - 1 (1.4); <i>pet_11</i> - 4 (5.6); 8 × 0 (0.0)
Subtotal		11 (15.2)
16 Topographic Indices		
<i>Twelve Geomorphologic Indices</i> (derived from 15 arc second resolution HydroSHEDs grids of Lehner et al. 2008; last 10 indices calculated using Geomorphometry and Gradient Metrics Toolbox for ArcGIS [Evans et al. 2014]) ^c		
Elevation	<i>elev</i>	3 (4.2)
Slope	<i>slope</i>	4 (5.5)
Martonne's Modified Dissection Coefficient (Dissection, DISS), 3 km circular radius	<i>diss3kr</i>	0 (0.0)
Topographic Position Index (TPI), 3 km circular radius	<i>tpi3kr</i>	0 (0.0)
TPI, 9 km circular radius	<i>tpi9kr</i>	1 (1.4)
TPI, 19 km circular radius	<i>tpi19kr</i>	1 (1.4)
Elevation Relief Ratio (ERR, = Surface Relief Ratio, SRR), 3 km circular radius	<i>err3kr</i>	0 (0.0)

Tab. S1 (Cont.)- One hundred nineteen environmental predictor indices (1 km resolution) used in developing 12 selected MaxEnt hemlock woolly adelgid niche models with six of 119 variables.^a

Variable Index (Source)	Variable Index (Source)	Variable Index (Source)
Compound Topographic Index (CTI)	<i>cti</i>	0 (0.0)
Heat Load Index (HLI)	<i>hli</i>	0 (0.0)
Integrated Moisture Index (IMI)	<i>imi</i>	0 (0.0)
Site Exposure Index (SEI)	<i>sei</i>	2 (2.8)
Slope Cosine Aspect Index (SCAI)	<i>scai</i>	0 (0.0)
<i>Four Hydrogeomorphologic Indices</i> (derived from 15 arc second resolution HydroSHEDs polyline river network shapefile of Lehner et al. 2008)		
Distance to Streams (STRMDIST)	<i>strmdist</i>	1 (1.4)
Distance to Low Flow Accumulation Areas (< 5,000 cells; STRMLOFLODIST)	<i>strmloflodist</i>	2 (2.8)
Distance to Medium Flow Accumulation Areas (5,000–60,000 cells; STRMMDFLODIST)	<i>strmmdflodist</i>	1 (1.4)
Distance to High Flow Accumulation Areas (>60,000 cells; STRMHIFLODIST)	<i>strmhiflodist</i>	0 (0.0)
Subtotal		15 (20.8)
24 Edaphic Indices (derived from 250 m resolution global SoilGrids250m of Hengl et al. [2017])		
12 Soil Property Indices		
<i>Top Soil: 0–5 cm</i>		
% Sand	<i>sand5cm</i>	1 (1.4)
% Clay	<i>clay5cm</i>	0 (0.0)
% Silt	<i>silt5cm</i>	5 (6.9)
Bulk Density	<i>blkden5cm</i>	2 (2.8)
Coarse Fragments	<i>frags5cm</i>	2 (2.8)
Soil pH in H ₂ O	<i>pH5cm</i>	2 (2.8)
Subtotal		0 (0.0)
<i>Deep Soil: 0–30 cm</i>		
% Sand	<i>sand30cm</i>	2 (2.8)
% Clay	<i>clay30cm</i>	0 (0.0)

Tab. S1 (Cont.)- One hundred nineteen environmental predictor indices (1 km resolution) used in developing 12 selected MaxEnt hemlock woolly adelgid niche models with six of 119 variables.^a

Variable Index (Source)	Variable Index (Source)	Variable Index (Source)
% Silt	<i>silt30cm</i>	2 (2.8)
Bulk Density	<i>blkden30cm</i>	1 (1.4)
Coarse Fragments	<i>frags30cm</i>	0 (0.0)
Soil pH in H ₂ O	<i>silt30cm</i>	1 (1.4)
Subtotal		18 (25.0)
<i>12 USDA Soil Classification Suborder Indices (six orders; percent probability per grid cell)^d</i>		
<i>Spodosols Order</i>		
Aquods	<i>aquods</i>	0 (0.0)
Orthods	<i>orthods</i>	1 (1.4)
<i>Alfisols Order</i>		
Aqualfs	<i>aqualfs</i>	0 (0.0)
Udalfs	<i>udalfs</i>	1 (1.4)
<i>Entisols Order</i>		
Orthents	<i>orthents</i>	2 (2.8)
Psamments	<i>psamments</i>	1 (1.4)
<i>Inceptisols Order</i>		
Aquepts	<i>aquepts</i>	1 (1.4)
Ochrepts	<i>ochrepts</i>	4 (5.5)
Udepts	<i>udepts</i>	2 (2.8)
<i>Ultisols Order</i>		
Aqults	<i>aqults</i>	0 (0.0)
Udults	<i>udults</i>	0 (0.0)
<i>Andisols Order</i>		
Cryands	<i>cryands</i>	0 (0.0)
Subtotal		12 (16.7)

^aSee Table S3 for six variables used in each of 12 feature-selected MaxEnt models and Table S2 for ranking of all variables.

^bFrequency out of six variables times 12 models = 72 instances.

^cFor additional sources of indices and details see Tracy et al. (2018).

^dCommon soil suborders over the range of *Tsuga* spp. in North America and Asia.

Tab. S2 - MaxEnt model variable permutation importance for 42 of 119 variables used in top 12 six-variable hemlock woolly adelgid models selected by random subset feature selection algorithm.

Variable ^a	MaxEnt Model Permutation Importance, Mean \pm SD (number of top 12 models)	Multi Multi-Objective Optimization Ranking by Mean Permutation Importance (0.6 weight) and Number Appearances in Top 12 Models (0.4 weight) ^b
<i>pet_11</i>	43.4 \pm 4.8 (4)	1
<i>slope</i>	33.4 \pm 6.4 (4)	2
<i>ochrepts</i>	19.4 \pm 7.1 (4)	3
<i>silt5cm</i>	12.7 \pm 3.3 (5)	4
<i>udepts</i>	44.3 \pm 8.9 (2)	5
<i>tmax_2</i>	40.2 \pm 5.4 (2)	6
<i>frags5cm</i>	35.5 \pm 5.2 (2)	7
<i>ph5cm</i>	19.5 \pm 7.4 (2)	8
<i>blkden5cm</i>	18.7 \pm 4.7 (2)	9
<i>prec_1</i>	9.1 \pm 9.1 (3)	10
<i>elev</i>	8.7 \pm 7.1 (3)	11
<i>sand30cm</i>	11.8 \pm 3.5 (2)	12
<i>silt30cm</i>	7 \pm 0.9 (2)	13
<i>orthents</i>	5.3 \pm 1.1 (2)	14
<i>prec_2</i>	4.5 \pm 2.2 (2)	15
<i>bio_8</i>	3.5 \pm 1.2 (2)	16
<i>strmloflodist</i>	2.5 \pm 0.1 (2)	17
<i>aet_7</i>	1.9 \pm 0.8 (2)	18
<i>sei</i>	0.4 \pm 0.5 (2)	19
<i>pet_1</i>	39.5 \pm 0 (1)	20
<i>bio_4</i>	38.3 \pm 0 (1)	21
<i>pet_3</i>	36.5 \pm 0 (1)	22
<i>aet_2</i>	35.6 \pm 0 (1)	23
<i>tmax_1</i>	33.2 \pm 0 (1)	24
<i>tmax_3</i>	33 \pm 0 (1)	25
<i>blkden30cm</i>	16.2 \pm 0 (1)	26
<i>ph30cm</i>	14.6 \pm 0 (1)	27
<i>orthods</i>	13 \pm 0 (1)	28
<i>aquepts</i>	12.2 \pm 0 (1)	29
<i>pet_7</i>	7.7 \pm 0 (1)	30
<i>tmin_10</i>	7.6 \pm 0 (1)	31
<i>udalfs</i>	5.3 \pm 0 (1)	32
<i>sand5cm</i>	4.8 \pm 0 (1)	33
<i>strmdist</i>	2.3 \pm 0 (1)	34
<i>tpi9kr</i>	1.6 \pm 0 (1)	35
<i>bio_19</i>	1.6 \pm 0 (1)	36
<i>tpi3kr</i>	1.4 \pm 0 (1)	37

Tab. S2 (Cont.) - MaxEnt model variable permutation importance for 42 of 119 variables used in top 12 six-variable hemlock woolly adelgid models selected by random subset feature selection algorithm.

Variable ^a	Variable ^a	Variable ^a
<i>strmmdflodist</i>	1.2 ± 0 (1)	38
<i>aet_6</i>	1.1 ± 0 (1)	39
<i>bio_18</i>	0.5 ± 0 (1)	40
<i>psammets</i>	0.5 ± 0 (1)	41
<i>bio_15</i>	0.1 ± 0 (1)	42

^aSee Table S1 for variable abbreviations and sources of variables and Table S3 for variables used in each of top 12 models.

^bVariables ranked using weighted joint criteria with MCDM R package.

Tab. S3 - Hemlock woolly adelgid feature-selected MaxEnt model environmental variables.

Model Number					
Model 1	Model 2	Model 3	Model 4	Model 5	Model 6
<i>elev</i>	<i>bio_19</i>	<i>aquepts</i>	<i>blkden5cm</i>	<i>bio_8</i>	<i>bio_4</i>
<i>prec_2</i>	<i>ochrepts</i>	<i>bio_8</i>	<i>ochrepts</i>	<i>orthents</i>	<i>orthods</i>
<i>sei</i>	<i>pet_3</i>	<i>bio_15</i>	<i>orthents</i>	<i>prec_1</i>	<i>pet_7</i>
<i>silt5cm</i>	<i>ph5cm</i>	<i>frags5cm</i>	<i>pet_11</i>	<i>silt5cm</i>	<i>psamments</i>
<i>tmax_3</i>	<i>silt30cm</i>	<i>pet_11</i>	<i>sand30cm</i>	<i>slope</i>	<i>strmfloflodist</i>
<i>udepts</i>	<i>tmin_10</i>	<i>strmdist</i>	<i>tpi3kr</i>	<i>tmax_1</i>	<i>udepts</i>
Model 7	Model 8	Model 9	Model 10	Model 11	Model 12
<i>aet_7</i>	<i>aet_2</i>	<i>elev</i>	<i>aet_7</i>	<i>aet_6</i>	<i>elev</i>
<i>ph5cm</i>	<i>bio_18</i>	<i>frags5cm</i>	<i>blkden5cm</i>	<i>blkden30cm</i>	<i>prec_1</i>
<i>silt5cm</i>	<i>ph30cm</i>	<i>pet_11</i>	<i>ochrepts</i>	<i>ochrepts</i>	<i>silt5cm</i>
<i>slope</i>	<i>prec_2</i>	<i>prec_1</i>	<i>pet_1</i>	<i>pet_11</i>	<i>strmlloflodist</i>
<i>tmax_2</i>	<i>sand5cm</i>	<i>sand30cm</i>	<i>silt5cm</i>	<i>silt30cm</i>	<i>strmmdflodist</i>
<i>tpi9kr</i>	<i>slope</i>	<i>sei</i>	<i>udalfs</i>	<i>slope</i>	<i>tmax_2</i>

^aFor variable abbreviations, see Table S1.

Figures

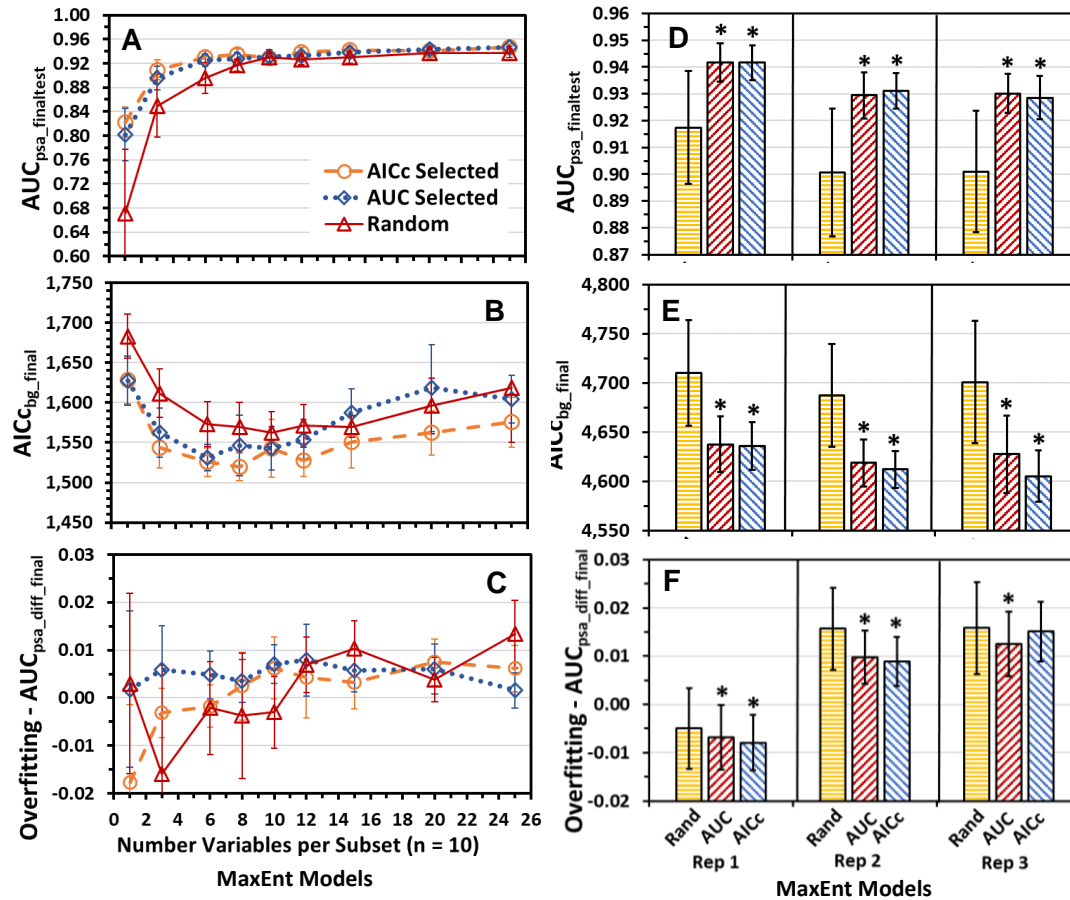


Fig. S1 - Hemlock woolly adelgid MaxEnt model evaluation statistics (mean \pm SD) of $AUC_{psa_finaltest}$ (A,D), $AICc_{bg_final}$ (B,E), and $AUC_{psa_diff_final}$ (overfitting; C,F) for models developed from (A-C) top ten variable subsets selected by AUC_{psa} or $AICc$ using random subset feature selection (RSFSA) and ten random subsets out of 250 randomly generated six-variable subsets of various sizes derived from 119 variables; and (D-F) top 250 variable subsets out of 3,000 subsets per three training set replicates selected by AUC_{psa} or $AICc$ using RSFSA and top 300 random generated six-variable subsets out of 3,000 subsets derived from 119 variables. Means for AUC_{psa} selected or $AICc$ selected model statistics within a replicate with an asterisk are significantly more optimal (higher for $AUC_{psa_finaltest}$ and lower for $AICc_{bg_final}$ and $AUC_{psa_diff_final}$) from that of random selected models ($P < 0.05$; Welch t test with Holm correction, preceded by significant Welch ANOVA test, $P < 0.05$)

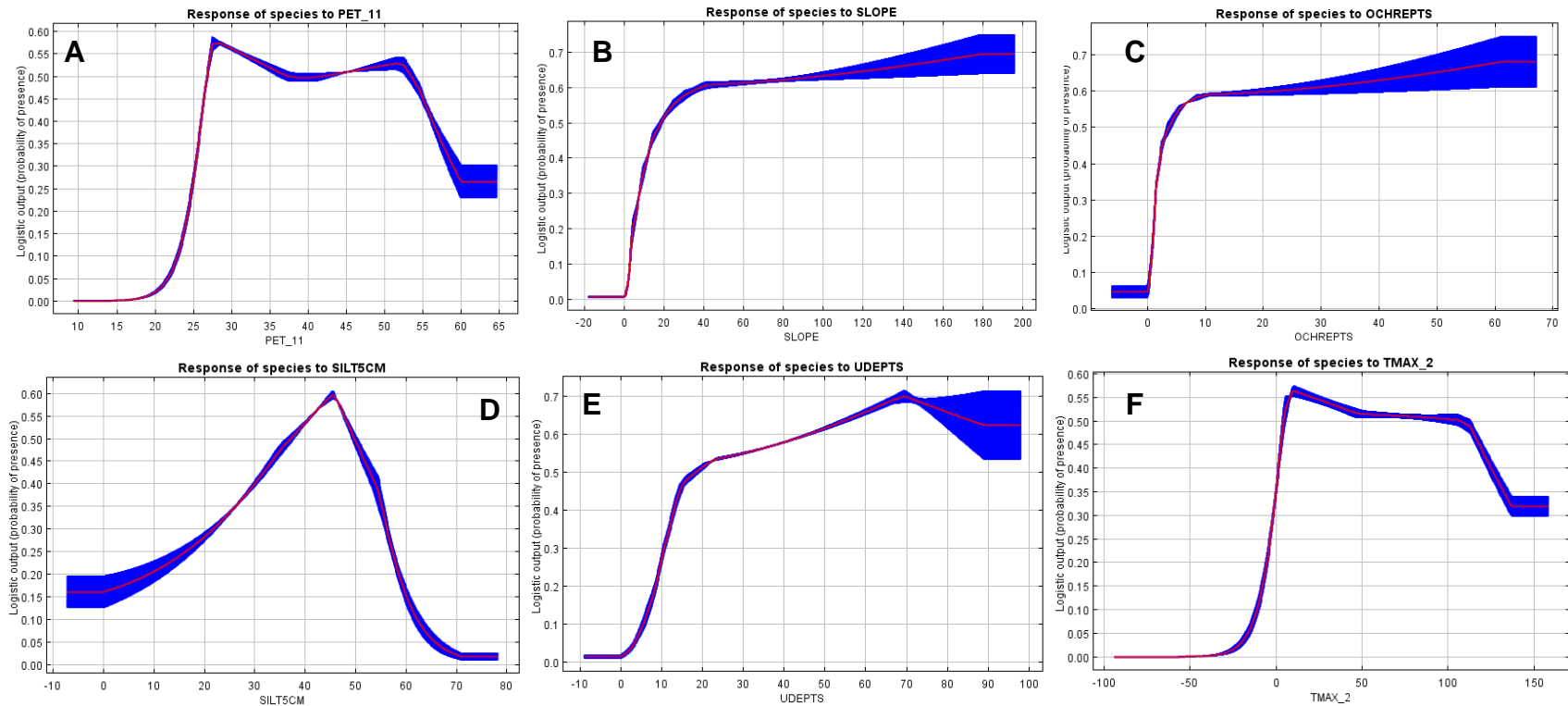


Fig. S2 - Hemlock woolly adelgid single-variable MaxEnt model variable response curves (logistic output probability of presence vs. variable) for the six top ranked variables (Table S2) from feature-selected models (Table S3): (A) *pet_11*, (B) *slope*, (C) *ochrepts*, (D) *silt5cm*, (E) *udepts*, and (F) *tmax_2* (see Table S1 for abbreviations and Table S2 for variable ranking and permutation importance).

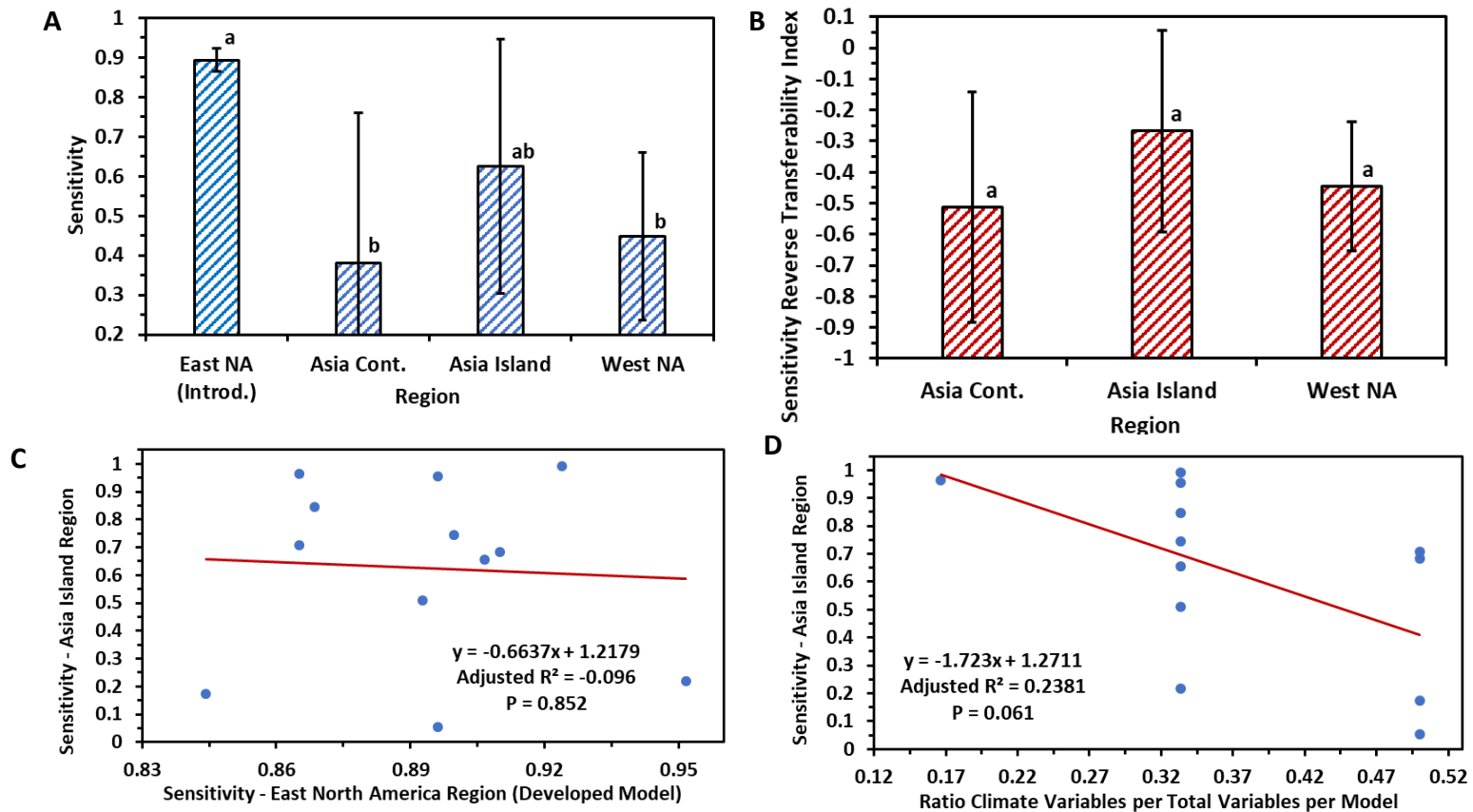


Fig. S3 - (A) Sensitivity of introduced hemlock woolly adelgid mean Maxent model projections ($\bar{X} \pm SD$; $n = 12$) for introduced (East North America) range and native ranges of Asia continental, Asia island, and West North America; (B) Sensitivity reverse transferability index from introduced range to native ranges ($\bar{X} \pm SD$; $n = 12$) (means with same letters are not significantly different, $P < 0.05$, Games Howell multiple comparison test with Holm correction following significant Welch ANOVA test, $P < 0.05$); (C) relationship between sensitivity of introduced model for Asia island region and sensitivity of introduced model in introduced region (East North America); (D) relationship between sensitivity of introduced model for Asia island region and percent of climate variables used in model ($n = 12$; P values from F-test of linear regression).

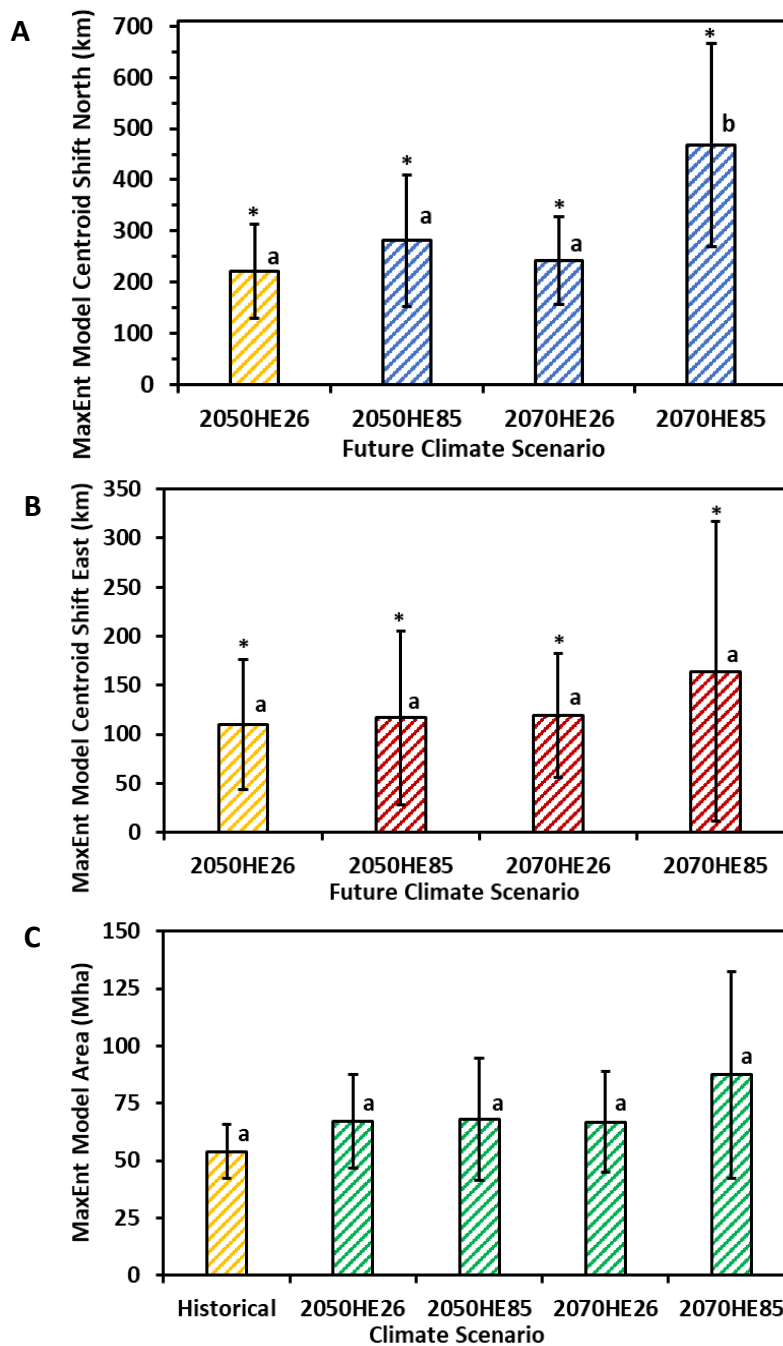


Fig. S4 - Characteristics of introduced hemlock woolly adelgid mean Maxent model projections ($\bar{X} \pm SD$; $n = 12$) under historical and future climate scenarios in eastern North America: (A) northward and (B) eastward shifts of future model centroids from historical model centroids (at zero shift); (C) areas of historical and future models. (* = mean significantly different from zero; $P < 0.02$; Welch t-test with Holm correction) (means with same letter are not significantly different from mean at far left, $P < 0.05$, paired Welch t-test with Holm correction).

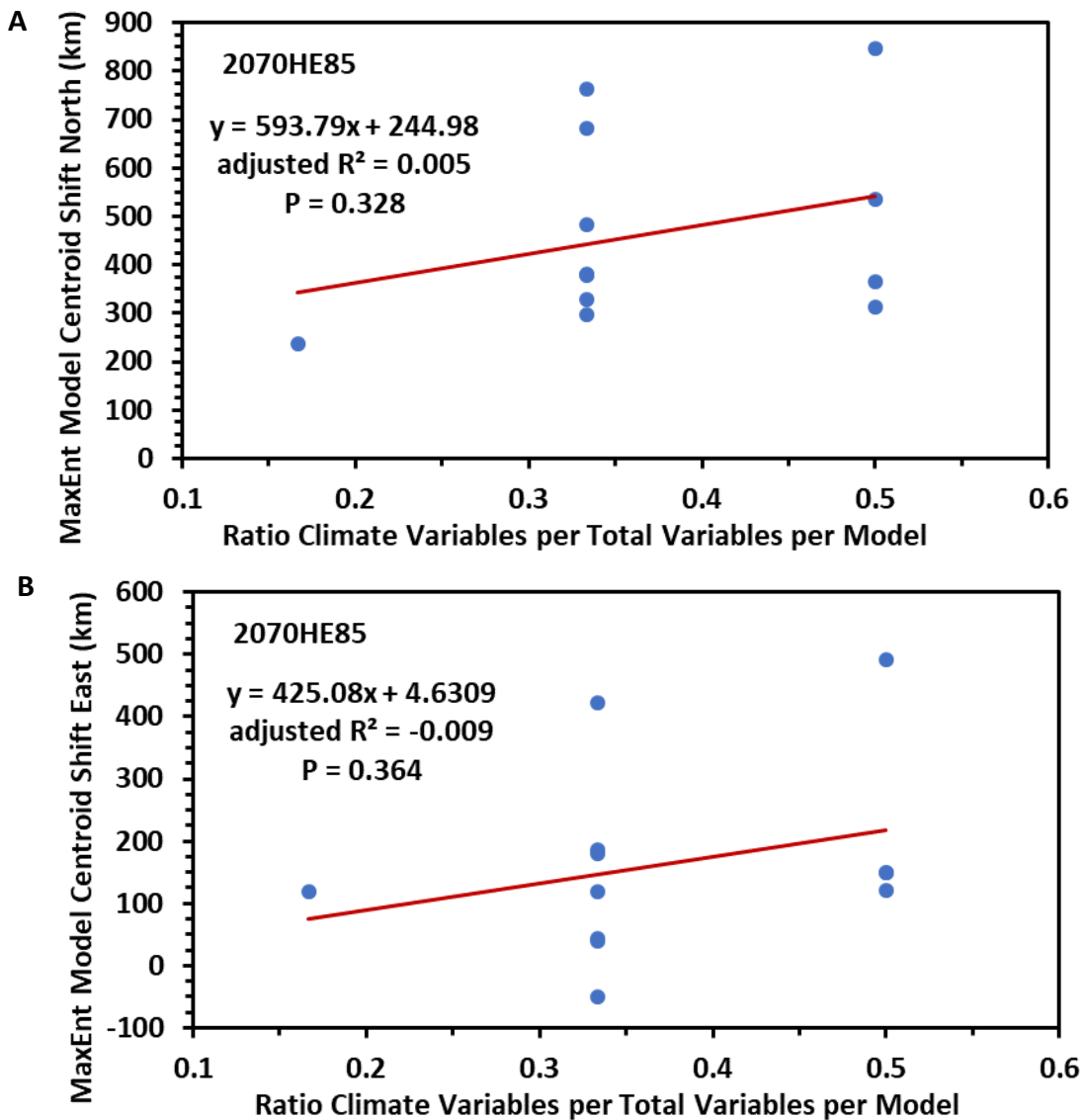


Fig. S5 - Relationship between northward (A) and eastward (B) shifts of centroids of introduced hemlock woolly adelgid MaxEnt model projections from historical to future 2070HE85 climates and the ratio of climate variables (1-3) to the number of total variables (6) per model ($n = 12$; P values from F-test of linear regression).

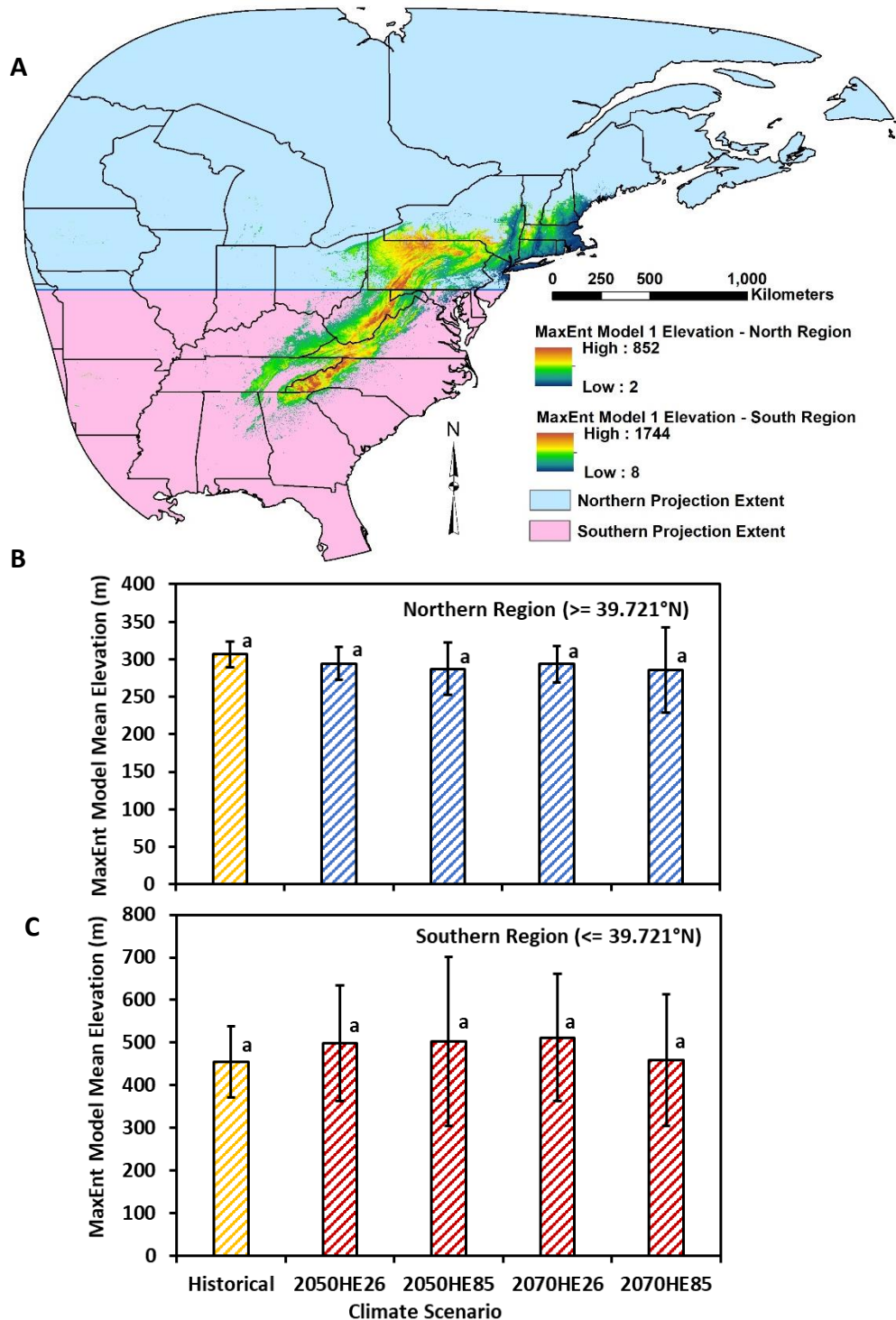


Fig. S6 - (A) North and South regions (divided at 39.721°N) for introduced hemlock woolly adelgid MaxEnt model projections with elevation for MaxEnt historical climate model 1 in two regions. Mean elevation ($\bar{X} \pm \text{SD}$; $n = 11-12$) within historical and future MaxEnt model projections for North (B) and South (C) regions (means with same letter are not significantly different from mean at far left, $P < 0.05$, paired Welch t-test with Holm correction).