

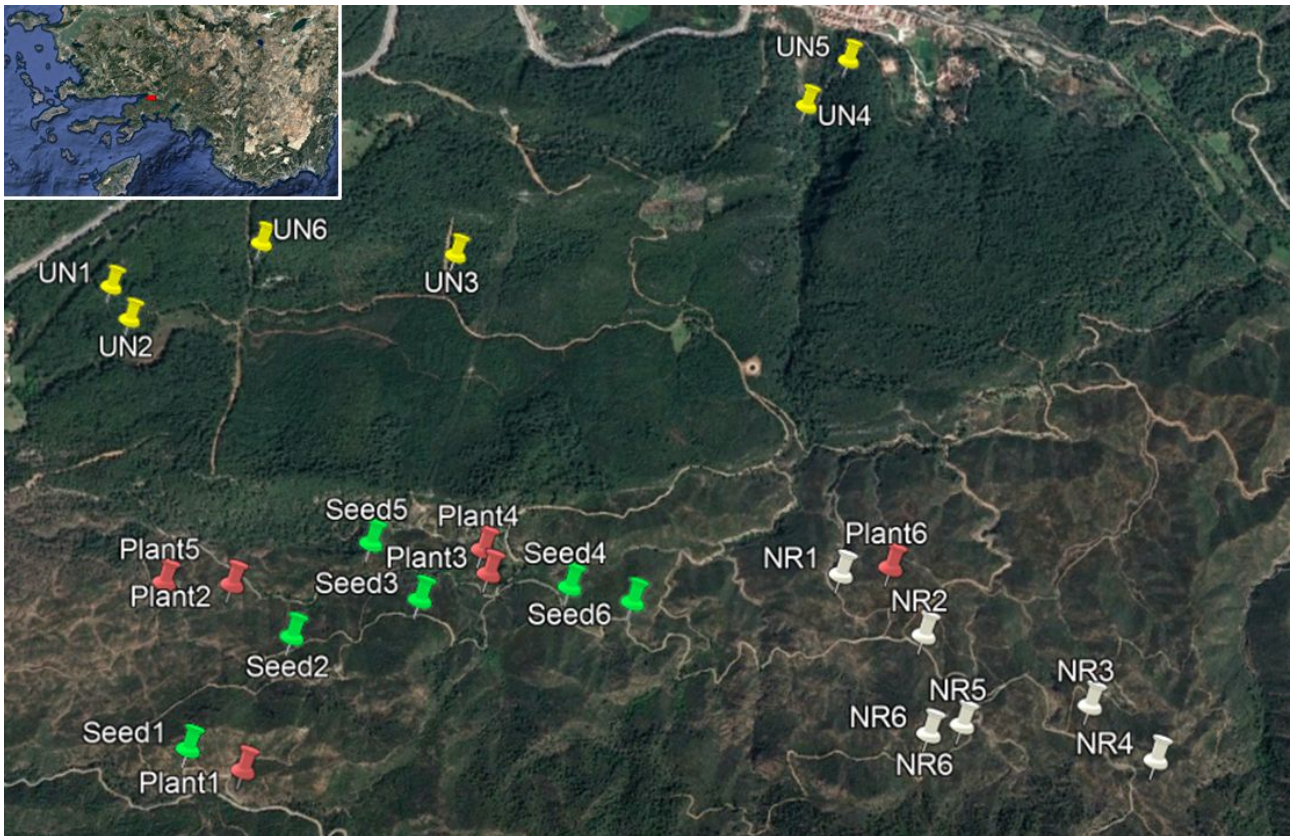
Ürker O, Tavşanoğlu C, Gürkan B (2018).

Post-fire recovery of the plant community in *Pinus brutia* forests: active vs. indirect restoration techniques after salvage logging

iForest – Biogeosciences and Forestry – doi: [10.3832/ifer2645-011](https://doi.org/10.3832/ifer2645-011)

Supplementary Material

Fig. S1 - Location of plots in the study area and location of study area in south-western Turkey (top left). “UN”, “NR”, “Seed”, and “Plant” refer to unburned plots, natural regeneration plots, seeding plots, and plantation plots, respectively. The exact geographic coordinates of the plots are given in Tab. S1.



Ürker O, Tavşanoğlu C, Gürkan B (2018).

Post-fire recovery of the plant community in *Pinus brutia* forests: active vs. indirect restoration techniques after salvage logging

iForest – Biogeosciences and Forestry – doi: [10.3832/ifer2645-011](https://doi.org/10.3832/ifer2645-011)

Tab. S1 - Geographic locations, altitudes, and aspects of study plots.

Plot	Latitude (°N)	Longitude (°E)	Altitude (m)	Aspect
Unburned-1	37.00114	28.31895	89	Flat
Unburned-2	37.00086	28.31917	90	Flat
Unburned-3	37.00282	28.33528	110	South
Unburned-4	37.00844	28.35191	96	North (NE)
Unburned-5	37.01021	28.35397	76	North (NW)
Unburned-6	37.00335	28.32619	103	South
Seeding-1	36.98463	28.32316	218	South (SE)
Seeding-2	36.98863	28.32780	221	North
Seeding-3	36.98994	28.33371	268	North
Seeding-4	36.99033	28.34054	233	Flat
Seeding-5	36.99201	28.33133	164	South
Seeding-6	36.98977	28.34341	245	Flat
Plantation-1	36.98384	28.32565	238	North (NW)
Plantation-2	36.99054	28.32482	144	North (NE)
Plantation-3	36.99084	28.33680	196	Flat
Plantation-4	36.99172	28.33653	181	South
Plantation-5	36.99062	28.32162	126	Flat
Plantation-6	36.99092	28.35517	251	South
Natural regeneration-1	36.99069	28.35291	249	North
Natural regeneration-2	36.98847	28.35657	311	North
Natural regeneration-3	36.98594	28.36381	352	South
Natural regeneration-4	36.98403	28.36657	375	South (SE)
Natural regeneration-5	36.98531	28.35809	348	Flat
Natural regeneration-6	36.98502	28.35657	360	Flat

Ürker O, Tavşanoğlu C, Gürkan B (2018).

Post-fire recovery of the plant community in *Pinus brutia* forests: active vs. indirect restoration techniques after salvage logging

iForest – Biogeosciences and Forestry – doi: [10.3832/ifer2645-011](https://doi.org/10.3832/ifer2645-011)

Tab. S2 - Families, growth forms, and regeneration modes (RM) of the taxa considered in the study. Nomenclature follows Davis (1965–1985), Güner et al. (2012), and Stevens (2001–onwards) for the current family names. R is obligate resprouter, FR is facultative resprouter, S is obligate seeder, and ‘none’ is the species with no specific regeneration trait.

Family	Taxon	Growth form	RM
Anacardiaceae	<i>Pistacia terebinthus</i> L. ssp. <i>terebinthus</i>	large shrub	R
Apiaceae	<i>Bupleurum orientale</i> Snogerup	annual forb	none
	<i>Daucus involucratus</i> Sibth. & Sm.	annual forb	none
Asparagaceae	<i>Asparagus aphyllus</i> L. ssp. <i>orientalis</i> (Baker) PH Davis	scrub	R
	<i>Ruscus aculeatus</i> L.	scrub	R
Asteraceae	<i>Anthemis cretica</i> L. ssp. <i>leucanthemoides</i> (Boiss.) Grierson	annual forb	none
	<i>Carlina corymbosa</i> L.	perennial forb	R
	<i>Centaurea solstitialis</i> L. ssp. <i>pyracantha</i> (Boiss.) Wagenitz	annual forb	none
	<i>Echinops spinosissimus</i> Turra ssp. <i>spinosissimus</i>	perennial forb	none
	<i>Dittrichia viscosa</i> (L.) Greuter	perennial forb	FR
Brassicaceae	<i>Alyssum hirsutum</i> M.Bieb. ssp. <i>hirsutum</i>	perennial forb	S
	<i>Thlaspi</i> sp.L.	annual forb	none
Caryophyllaceae	<i>Silene tunicoides</i> Boiss.	perennial forb	FR
Cistaceae	<i>Cistus creticus</i> L.	shrub	S
	<i>Cistus salviifolius</i> L.	shrub	S
Ericaceae	<i>Arbutus andrachne</i> L.	large shrub	R
	<i>Erica manipuliflora</i> Salisb.	shrub	FR
Fabaceae	<i>Calicotome villosa</i> (Poir.) Link	shrub	FR
	<i>Cytisopsis pseudocytisus</i> (Boiss.) Fertig ssp. <i>reeseana</i> (Guyot) Lassen	scrub	S
	<i>Genista acanthoclada</i> DC.	shrub	FR
	<i>Spartium junceum</i> L.	large shrub	FR
	<i>Trifolium campestre</i> Schreb. ssp. <i>campestre</i> var. <i>campestre</i>	annual forb	S

Ürker O, Tavşanoğlu C, Gürkan B (2018).

Post-fire recovery of the plant community in *Pinus brutia* forests: active vs. indirect restoration techniques after salvage logging

iForest – Biogeosciences and Forestry – doi: [10.3832/ifer2645-011](https://doi.org/10.3832/ifer2645-011)

Family	Taxon	Growth form	RM
	<i>Trifolium</i> L. sp.1	annual forb	S
Fagaceae	<i>Quercus infectoria</i> Oliv. ssp. <i>boissieri</i> (Reuter) O. Schwarz	large shrub	R
	<i>Quercus coccifera</i> L.	large shrub	R
Hypericaceae	<i>Hypericum empetrifolium</i> Willd. sup. <i>empetrifolium</i>	scrub	FR
Juncaceae	<i>Juncus maritimus</i> Lam.	perennial graminoid	R
Lamiaceae	<i>Lavandula stoechas</i> L. ssp. <i>stoechas</i>	scrub	S
	<i>Phlomis</i> L. sp.	scrub	FR
	<i>Salvia viridis</i> L.	annual forb	S
	<i>Teucrium polium</i> L. ssp. <i>polium</i>	scrub	R
	<i>Teucrium divaricatum</i> Sieber ssp. <i>divaricatum</i>	scrub	FR
	<i>Thymus</i> L. sp.	scrub	FR
	<i>Ziziphora tenuior</i> L.	annual forb	none
Myrtaceae	<i>Myrtus communis</i> L. ssp. <i>communis</i>	large shrub	R
Oleaceae	<i>Olea europaea</i> L. ssp. <i>europaea</i>	tree	R
	<i>Phillyrea latifolia</i> L.	large shrub	R
Pinaceae	<i>Pinus brutia</i> Ten.	tree	S
Poaceae	<i>Avena fatua</i> L.	annual graminoid	none
	<i>Briza maxima</i> L.	annual graminoid	S
	<i>Bromus</i> L. sp. 1	annual graminoid	none
	<i>Bromus</i> L. sp. 2	annual graminoid	none
	<i>Cynosorus echinatus</i> L.	annual graminoid	none
	<i>Dactylis glomerata</i> L. ssp. <i>hispanica</i> (Roth) Nyman	perennial graminoid	R
	<i>Oryzopsis coerulescens</i> (Desf.) Hack.	perennial graminoid	R
	<i>Phalaris</i> L. sp.	perennial graminoid	R

Ürker O, Tavşanoğlu C, Gürkan B (2018).

Post-fire recovery of the plant community in *Pinus brutia* forests: active vs. indirect restoration techniques after salvage logging

iForest – Biogeosciences and Forestry – doi: [10.3832/ifer2645-011](https://doi.org/10.3832/ifer2645-011)

Family	Taxon	Growth form	RM
	Poaceae1	annual	none
		graminoid	
	Poaceae3	annual	none
		graminoid	
	Poaceae4	annual	none
		graminoid	
	Poaceae5	annual	none
		graminoid	
	<i>Polypogon monspeliensis</i> (L.) Desf.	perennial	R
		graminoid	
	<i>Brachypodium distachyon</i> (L.) P.Beauv.	annual	none
		graminoid	
Rhamnaceae	<i>Ziziphus jujuba</i> Mill.	large shrub	R
Rosaceae	<i>Pyrus amygdaliformis</i> Vill. var. <i>amygdaliformis</i>	large shrub	R
	<i>Sarcopoterium spinosum</i> (L.) Spach	scrub	FR
Santalaceae	<i>Thesium</i> L. sp.	perennial forb	FR
Scrophulariaceae	<i>Verbascum</i> L. sp.	perennial forb	none
Smilacaceae	<i>Smilax aspera</i> L.	liana	R
Styracaceae	<i>Styrax officinalis</i> L.	large shrub	R
Xanthorroaceae	<i>Asphodelus aestivus</i> Brot.	geophyte	R

References

- Davis PH (ed.) (1965–1985). Flora of Turkey and the East Aegean Islands, Vol 1–9. Edinburgh University Press, Edinburgh.
- Güner A, Aslan S, Ekim T, Vural M, Babaç MT (2012). Türkiye Bitkileri Listesi (Damarlı Bitkiler) [The List of Plant of Turkey (Vascular Plants)]. İstanbul: Flora Araştırmaları Derneği ve Nezahat Gökyiğit Botanik Bahçesi Yayını [in Turkish].
- Stevens PF (2001–onwards). Angiosperm phylogeny website. [online] URL: <http://www.mobot.org/MOBOT/research/APweb/>

Post-fire recovery of the plant community in *Pinus brutia* forests: active vs. indirect restoration techniques after salvage logging

iForest – Biogeosciences and Forestry – doi: [10.3832/ifer2645-011](https://doi.org/10.3832/ifer2645-011)

Tab. S3 - Mean (\pm SE) cover values of each taxon considered in the present study in different treatment sites. The results of the one-way analysis of variance for the effects of treatments on the cover of each taxon were given (p values smaller than 0.05 are given in bold). The same letter on the cover values indicates no significant difference across treatments at $p < 0.05$ level.

Taxon	Treatment				Statistics F
	Unburned	Plantation	Seeding	Natural regeneration	
Anacardiaceae					
<i>Pistacia terebinthus</i> ssp. <i>terebinthus</i>	0.5 \pm 0.4 ab	0.2 \pm 0.2 a	0.4 \pm 0.3 ab	1.8 \pm 0.5 b	4.4
Apiaceae					
<i>Bupleurum orientale</i>	0 a	2.8 \pm 0.7 b	0.2 \pm 0.1 a	0.1 \pm 0.1 a	25.2
<i>Daucus involucratus</i>	0	2.2 \pm 1.4	0.2 \pm 0.2	0	3.0
Asparagaceae					
<i>Asparagus aphyllus</i> ssp. <i>orientalis</i>	0.9 \pm 0.7 ab	0.1 \pm 0.1 a	0.5 \pm 0.2 ab	2.9 \pm 0.9 b	3.6
<i>Ruscus aculeatus</i>	0.2 \pm 0.2	0	0	0	2.4
Asteraceae					
<i>Anthemis cretica</i> ssp. <i>leucanthemoides</i>	0	0.1 \pm 0.1	0.3 \pm 0.2	0.1 \pm 0.1	1.8
<i>Carlina corymbosa</i>	0.1 \pm 0.1	0	0	0	1.0
<i>Centaurea solstitialis</i> ssp. <i>pyracantha</i>	0	1.3 \pm 1.1	0.1 \pm 0.1	0.2 \pm 0.2	1.7
<i>Dittrichia viscosa</i>	0	0.1 \pm 0.1	0.4 \pm 0.4	0.6 \pm 0.6	0.4
<i>Echinops spinosissimus</i> ssp. <i>spinosissimus</i>	0	0	0	0.2 \pm 0.2	1.0
Brassicaceae					
<i>Alyssum hirsutum</i>	0	0	0.2 \pm 0.2	0.3 \pm 0.3	2.4
<i>Thlaspi</i> sp.	0	0	0	0.1 \pm 0.1	1.0
Caryophyllaceae					
<i>Silene tunicoides</i>	0	0	0.3 \pm 0.2	0	2.5
Cistaceae					
<i>Cistus creticus</i>	2.3 \pm 0.6 a	17.7 \pm 1.1 b	39.0 \pm 3.9 c	33.0 \pm 3.9 bc	50.3
<i>Cistus salvifolius</i>	0 a	0.3 \pm 0.3 ab	0.1 \pm 0.1 a	2.9 \pm 1.2 b	5.0
Ericaceae					
<i>Arbutus andrachne</i>	1.8 \pm 1.2	0	1.6 \pm 1.2	1.5 \pm 0.8	1.3

Ürker O, Tavşanoğlu C, Gürkan B (2018).

Post-fire recovery of the plant community in *Pinus brutia* forests: active vs. indirect restoration techniques after salvage logging

iForest – Biogeosciences and Forestry – doi: [10.3832/ifer2645-011](https://doi.org/10.3832/ifer2645-011)

Taxon	Treatment				Statistics	
	Unburned	Plantation	Seeding	Natural regeneration	F	
<i>Erica manipuliflora</i>	10.2±8.2	1.3±1.1	4.9±2.3	1.7±0.5	0.8	
Fabaceae						
<i>Calicotome villosa</i>	0	0.1±0.1	2.6±1.7	0	2.0	1.142
<i>Cytisopsis pseudocytisus</i> ssp. <i>reeseana</i>	0 a	3.8±3.8 ab	16.0±7.8 b	12.2±7.6 ab	4.2	0.018
<i>Genista acanthoclada</i>	0.2±0.2	3.6±1.4	3.8±2.1	7.8±2.1	7.9	0.001
<i>Spartium junceum</i>	0	0	0.6±0.6	0	1.0	0.413
<i>Trifolium campestre</i> ssp. <i>campestre</i>	0 a	3.4±1.7 b	0.3±0.3 ab	0 a	5.2	0.008
<i>Trifolium</i> sp. 1	0	2.9±1.5	0.6±0.6	1.9±1.6	2.8	0.070
Fagaceae						
<i>Quercus infectoria</i> ssp. <i>boissieri</i>	18.2±6.5 a	0.9±0.6 b	0 b	7.9±3.4 a	15.4	<0.0001
<i>Quercus coccifera</i>	3.8±3.4	0	2.7±2.4	0	1.5	0.241
Hypericaceae						
<i>Hypericum empetrifolium</i> ssp. <i>empetrifolium</i>	0.2±0.2	0	0	0	1.0	0.413
Juncaceae						
<i>Juncus maritimus</i>	0	1.1±1.1	0	0	1.0	0.413
Lamiaceae						
<i>Lavandula stoechas</i> ssp. <i>stoechas</i>	0.1±0.1	1.3±0.8	0.6±0.4	0.1±0.1	2.3	0.109
<i>Phlomis</i> sp.	0	0	0	0.1±0.1	1.0	0.413
<i>Salvia viridis</i>	3.1±2.4 a	0 b	0.2±0.2 ab	0.1±0.1 ab	3.9	0.023
<i>Teucrium polium</i> ssp. <i>polium</i>	0	0.2±0.1	0.3±0.2	0.3±0.2	1.2	0.331
<i>Teucrium divaricatum</i> ssp. <i>divaricatum</i>	0.9±0.5 a	0 b	0 b	0 b	4.4	0.015
<i>Thymus</i> sp.	0	0.2±0.2	0	0	1.0	0.413
<i>Ziziphora tenuior</i>	0.4±0.4	0	0	0	1.0	0.413
Myrtaceae						
<i>Myrtus communis</i> ssp. <i>communis</i>	10.5±4.5 a	0 b	3.0±2.1 ab	0 b	4.8	0.011
Oleaceae						
<i>Olea europaea</i> ssp. <i>europaea</i>	0.3±0.3	0	0.1±0.1	0	0.7	0.558

Ürker O, Tavşanoğlu C, Gürkan B (2018).

Post-fire recovery of the plant community in *Pinus brutia* forests: active vs. indirect restoration techniques after salvage logging

iForest – Biogeosciences and Forestry – doi: [10.3832/ifor2645-011](https://doi.org/10.3832/ifor2645-011)

Taxon	Treatment				Statistics	
	Unburned	Plantation	Seeding	Natural regeneration	F	
<i>Phillyrea latifolia</i>	7.4±4.2	4.5±1.2	2.8±1.2	5.3±0.9	1.3	0.300
Pinaceae						
<i>Pinus brutia</i>	88.2±2.3 a	8.0±2.6 b	2.6±0.9 b	1.4±0.4 b	21.0	<0.0001
Poaceae						
<i>Avena fatua</i>	0 a	5.1±2.1 b	0.3±0.3 a	0 a	13.6	<0.0001
<i>Brachypodium distachyon</i>	0	0	0	0.3±0.3	1.0	0.413
<i>Briza maxima</i>	0	2.4±1.7	0.2±0.2	1.0±0.9	2.4	0.100
<i>Bromus</i> sp. 1	0 a	11.2±3.9 b	0.8±0.4 ab	2.8±2.4 ab	5.7	0.005
<i>Bromus</i> sp. 2	0.1±0.1 a	11.9±4.3 b	1.8±0.9 ab	0.4±0.2 a	6.1	0.004
<i>Cynosorus echinatus</i>	0.1±0.1	0	0	0	1.0	0.413
<i>Dactylis glomerata</i> ssp. <i>hispanica</i>	0 a	1.1±0.6 a	2.9±2.8 a	17.2±3.0 b	17.1	<0.0001
<i>Oryzopsis coerulescens</i> .	0	1.4±0.7	0.7±0.6	0	2.8	0.069
<i>Phalaris</i> sp.	0	0.2±0.2	0	0	1.0	0.413
Poaceae1	4.3±2.2	0	1.5±1.0	0	2.8	0.066
Poaceae3	0	0	0.2±0.2	0	1.0	0.413
Poaceae4	0	0	0.4±0.4	0	1.0	0.413
Poaceae5	0 a	5.9±2.2 b	1.8±1.4 ab	0.8±0.6 a	7.5	0.001
<i>Polypogon monspeliensis</i>	0	2.2±2.2	0	0.5±0.4	0.9	0.444
Rhamnaceae						
<i>Ziziphus jujuba</i>	1.8±1.2	0	0	0	2.5	0.090
Rosaceae						
<i>Pyrus amygdaliformis</i> var. <i>amygdaliformis</i>	0.1±0.1	0	0	0	1.0	0.413
<i>Sarcopoterium spinosum</i>	0 a	0.2±0.1 ab	1.2±0.5 b	0 a	6.2	0.004
Santalaceae						
<i>Thesium</i> sp.	0.5±0.5	0	0	0	1.0	0.413
Scrophulariaceae						
<i>Verbascum</i> sp.	0	0.1±0.1	0.4±0.2	0.1±0.1	2.0	0.154
Smilacaceae						
<i>Smilax aspera</i>	11.0±5.0	0.5±0.3	3.5±2.8	2.7±2.2	2.0	0.140

Ürker O, Tavşanoğlu C, Gürkan B (2018).

Post-fire recovery of the plant community in *Pinus brutia* forests: active vs. indirect restoration techniques after salvage logging

iForest – Biogeosciences and Forestry – doi: [10.3832/ifer2645-011](https://doi.org/10.3832/ifer2645-011)

Taxon	Treatment				Statistics	
	Unburned	Plantation	Seeding	Natural regeneration	F	
Styracaceae						
<i>Styrax officinalis</i>	18.1±6.4 a	0 b	0 b	0 b	22.6	<0.0001
Xanthorrhoeaceae						
<i>Asphodelus aestivus</i>	0.1±0.1	0.4±0.4	0	0	0.7	0.553