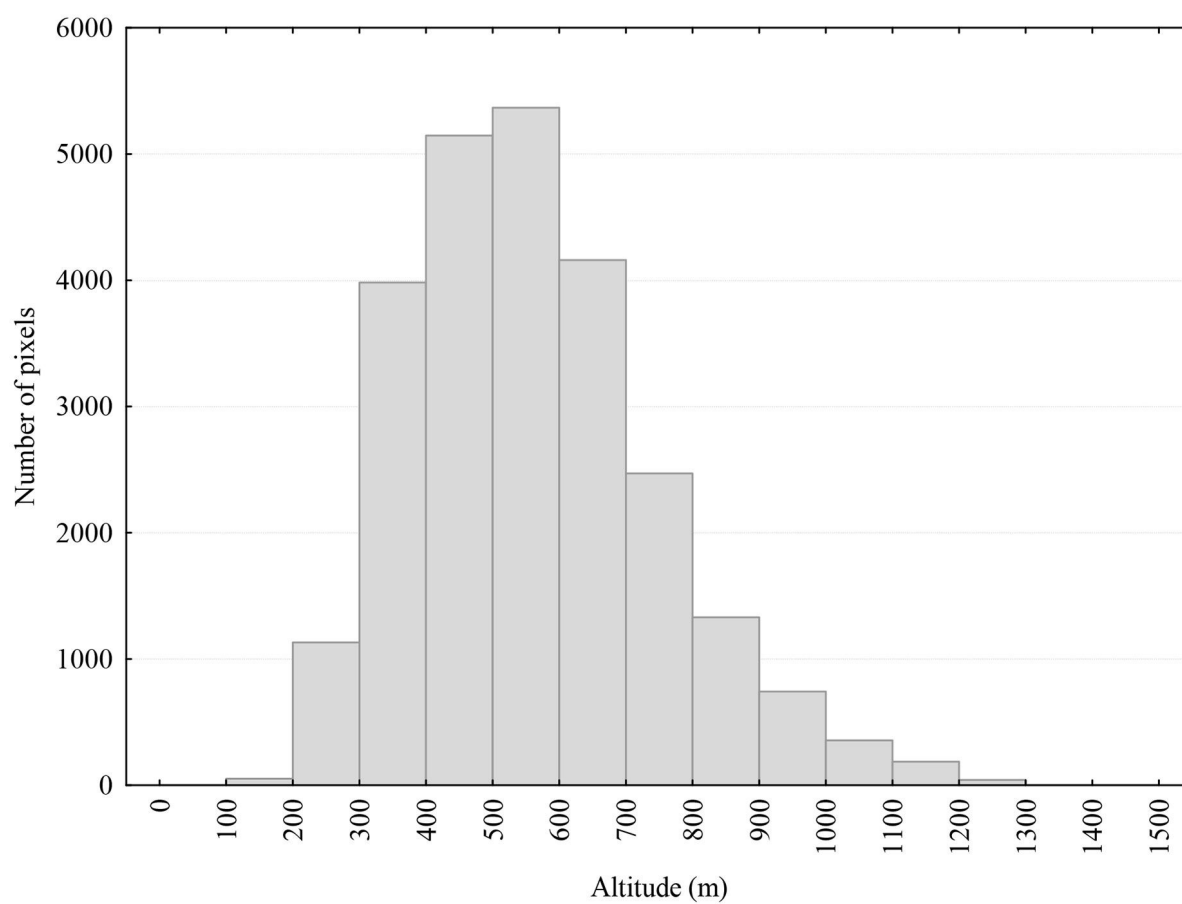


Supplementary material

Fig. S1 - The altitudinal distribution of analysed beech stands.



Tab. S1 - Description of MODIS dataset for analysis and overview of interpolation parameters.

| | 2000 | 2001 | 2002 | 2003 | 2004 | 2005 | 2006 | 2007 | 2008 | 2009 | 2010 | 2011 | 2012 | 2013 | 2014 | 2015 |
|---------------|-------|-------|-------|-------|-------|-------|-------|-------|-------|-------|-------|-------|-------|-------|-------|-------|
| n | 45 | 35 | 44 | 39 | 59 | 46 | 47 | 43 | 54 | 51 | 81 | 77 | 49 | 31 | 57 | 45 |
| \bar{x} | 14.6 | 16.7 | 22.9 | 14.0 | 31.6 | 15.7 | 20.5 | 14.5 | 27.2 | 20.9 | 42 | 28.9 | 12.7 | 10.0 | 27.5 | 12.8 |
| $s_{\bar{x}}$ | 3.5 | 3.3 | 3.8 | 4.3 | 6.7 | 4.8 | 4.0 | 4.1 | 5.8 | 4.1 | 5.8 | 6.1 | 3.9 | 3.6 | 5.1 | 3.7 |
| RMS | 0.035 | 0.036 | 0.040 | 0.035 | 0.037 | 0.032 | 0.038 | 0.032 | 0.051 | 0.029 | 0.039 | 0.041 | 0.037 | 0.043 | 0.037 | 0.034 |
| s_{RMS} | 0.006 | 0.011 | 0.012 | 0.009 | 0.006 | 0.008 | 0.009 | 0.007 | 0.016 | 0.007 | 0.007 | 0.006 | 0.006 | 0.012 | 0.009 | 0.007 |

n – number of images used for analyses; \bar{x} – mean number of missing pixels; $s_{\bar{x}}$ – standard deviation of \bar{x} ; RMS – average RMS of interpolated sigmoidal logistic curves (from all pixels) [1]; s_{RMS} - standard deviation of RMS

Fig. S2 - Leaf unfolding and temperature deviation from long-term average. y-left axis: Deviation (in days) of leaf unfolding onset from GSD₂₀₀₁₋₂₀₁₅ average; y-right axis: Deviation (in °C) of February-April mean air temperature from normal 1961-1990 in Slovakia (2001-2015).

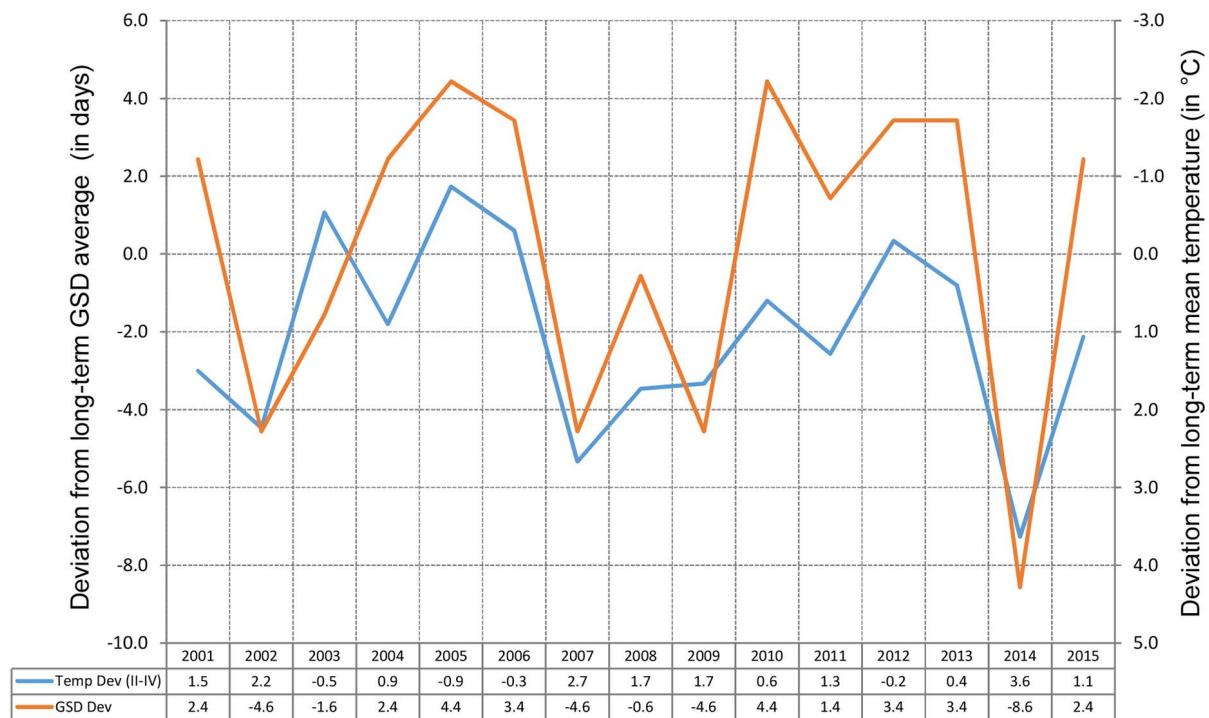


Fig. S3 - Leaf fall and temperature deviation from long-term average. y-left axis: Deviation (in days) of leaf fall onset from DSD₂₀₀₁₋₂₀₁₅ average; y-right axis: Deviation (in °C) of September monthly mean air temperature from normal 1961-1990 in Slovakia (2001-2015).

