

A resource capture efficiency index to compare differences in early growth of four tree species in northern England

Andrew D Leslie⁽¹⁾,
Maurizio Mencuccini⁽²⁾,
Mike P Perks⁽³⁾

At a trial established in Cumbria, northern England, significant differences in growth rate between tree species were apparent, with cider gum (*Eucalyptus gunnii*) and alder (*Alnus glutinosa*) exhibiting most rapid volume and biomass accumulation. Estimations were made of leaf area, specific leaf area, leaf area ratio (based on stem mass not whole tree mass) and length of growing season. These measurements were undertaken to explain tree growth difference and developing a growth potential index based on growing season length and leaf area. The high leaf area of cider gum and alder explained some of their superior growth, while alder also had the longest period in leaf, compared with ash (*Fraxinus excelsior*) and sycamore (*Acer pseudoplatanus*). The slow growth of ash can be explained by the short period in leaf and also the relatively low leaf area ratio. Leaf area to stem weight also differed between species with that of ash being relatively low. Specific leaf area was also low for ash, a trait shared with cider gum, which suggests that these species invest highly in each unit of leaf area. Of the tree species assessed, the length of the growing season was longest for alder, enabling it to maintain growth for a longer period. By multiplying growing season by leaf area a resource capture index was calculated and this explained 56% of the variation in stem dry weight between trees. The potential and limitations for using this index are discussed.

Keywords: *Eucalyptus gunnii*, *Fraxinus excelsior*, *Acer pseudoplatanus*, *Alnus glutinosa*, Resource Capture Efficiency

Introduction

This paper compares the early growth at a trial in northern England of four broadleaved trees species identified as having potential for short rotation forestry (Hardcastle 2006). Short rotation forestry for bioenergy was identified as a cost-effective and rapid means of reducing greenhouse gases (Matthews & Broadmeadow 2009), yet there is very limited experience of such systems in the UK. While quantifying yields from tree species in short rotation forestry systems is crucial, understanding the underlying factors contributing to their productivity is also important. Yield varies considerably between tree species and on a specific site is dependent on their resource

capture efficiency and resource use efficiency (Stape et al. 2004). Resource capture efficiency represents how efficiently a tree is able to allocate its resources to harvesting light for photosynthesis. There are two components: leaf mass fraction (LMF) and specific leaf area (SLA – Poorter et al. 2012). LMF (the ratio of leaf dry mass to total plant dry mass) reflects the priority of allocation of photosynthate to the leaves. Differences in LMF exist among tree species, with higher LMF being an attribute of faster growing trees (Poorter et al. 2012) and also shade bearing trees (Valladares & Niinemets 2008). LMF is higher in evergreen than deciduous trees but this is partly because evergreen trees retain leaves

for two or more years (Poorter et al. 2012). This higher LMF in evergreens may therefore be largely because of the lifespan of the leaf rather than higher partitioning of annual photosynthate to leaves (Poorter et al. 2012).

SLA reflects the amount of resources allocated to each unit of leaf area and is the ratio of leaf area to leaf dry mass. SLA is generally higher in conifers, compared with broadleaves and higher in fast growing trees that those that are slow growing. A meta-analysis undertaken by Poorter et al. (2009 in Poorter et al. 2012) found differences in SLA between types of trees were greater than for LMF. High SLA is a characteristic of plants that have a high relative growth rate (RGR), small seed mass and both RGR and SLA were good predictors of a plant's potential invasiveness. Leaf area ratio (LAR) is a variable that combines LMF and SLA, being the ratio between leaf area and total tree weight and strongly influences RGR, particularly on nutrient rich sites (Poorter & Remkes 1990).

Growth of a tree is also influenced by the duration of its growing season. The length of growing season has a strong influence on a tree's productivity and differences exist among species, origins and individual trees in terms of their period of dormancy. The dormancy in pioneer trees is largely determined by temperature, rather than photoperiod. In contrast, late successional trees follow a more conservative ap-

□ (1) National School of Forestry, University of Cumbria, Ambleside Campus, Rydal Road, Ambleside, LA22 9BB (UK); (2) School of Geosciences, University of Edinburgh, Crew Building, The King's Buildings, West Mains Road, Edinburgh EH9 3JN (UK); (3) Centre for Forestry and Climate Change, Forest Research, Northern Research Station, Roslin, Midlothian EH25 9SY (UK)

@ Andrew D Leslie (andrew.leslie@cumbria.ac.uk)

Received: Oct 12, 2016 - Accepted: Feb 01, 2017

Citation: Leslie AD, Mencuccini M, Perks MP (2017). A resource capture efficiency index to compare differences in early growth of four tree species in northern England. *iForest* 10: 397-405. - doi: 10.3832/ifor2248-010 [online 2017-03-24]

Communicated by: Silvano Fares

Tab. 1 - Origins of trees used in the trial and recommendations for the origins. A map of regions of provenance (Zones) for Great Britain is available in Forestry Commission (2016). Recommendations from: (1): Worrell (1992); (2): Hubert & Cundall (2006); (3): J. Purse, pers. comm.; (4): Evans (1986); (5): Cope et al. (2008).

Species	Origin	Recommendations
Alder	Zone 108, South west Scotland	Use British provenances ¹
Ash	Zone 108, South west Scotland	Seed stand material or material slightly to the south of planting site ²
Birch	Zone 202, central to north east Scotland	Avoid origins from long distances away from the planting site (slightly southern/ eastern locations seems to give more rapid growth) ²
Cider gum	Likely to be from a seed stand at Dipton, New Zealand ³ . Original origin unknown.	Origins from Lake McKenzie and Mount Cattley, Tasmania perform particularly well ⁴⁻⁵
Shining gum	Likely to be from a seed stand at Dipton, New Zealand ³ . Origin Central Victoria	Victoria provenances are most frost hardy ⁴
Sycamore	Zone 403, Midlands, England	Most British provenances grow well at most sites. May increase productivity by using origins from sites slightly to the south of the planting site ²

proach, requiring a longer period of chilling and are highly sensitive to photoperiod (Basler & Korner 2012). Nutrition has also an influence on period of dormancy; tree species with enhanced access to nutrients, including nitrogen fixing trees like alder adopt a higher risk approach to the development of their foliage, in a similar way to pioneer trees (Tateno 2003).

At this trial, growth was measured but also attributes important in influencing this growth were quantified, and these were compared between the tree species. A resource capture efficiency index was devised (leaf area \times period in leaf) and its relationship to stem volume was investigated. Results are compared with those of other researchers and differences observed be-

tween the tree species explained by their ecology.

The hypotheses tested were that: (i) there were differences in volume and biomass growth, SLA and LAR between the tree species at the trial; (ii) growth of stem volume was positively related to leaf area and growing season; (iii) the differences in growth between individuals and species can be explained by their resource capture efficiency and other aspects of their ecology.

Materials and methods

Experimental design

A one hectare trial was established at Newton Rigg, Cumbria, England (55° 40' 56" N, 02° 47' 22" W) at an elevation of 160 m above sea level. Ash (*Fraxinus excelsior*), sycamore (*Acer pseudoplatanus*) and alder (*Alnus glutinosa*) were planted in winter 2008 and cider gum (*Eucalyptus gunnii*) and shining gum (*Eucalyptus nitens*) in April 2009. Excluding the eucalypts, species selected for the trial were all classified by EMIS (Perks et al. 2006) as being "suitable", rather than "very suitable" or "unsuitable" for the site. The transplants were cell grown 20-40 cm plants raised by Alba Trees in the Scottish borders and origins are described in Tab. 1, along with recommended origins for the species.

Aspects of the climate at the trial were obtained from the weather station at the Newton Rigg campus and from the Establishment Management Information System (EMIS – Perks et al. 2006) and are shown in Tab. 2.

The trial site was originally grass pasture, the soil being a slightly acid (pH 6.0) clay loam brown earth. Soil bulk density was 0.76 at 0 cm to 15 cm depth and 1.07 at 15 cm to 30 cm depth, while the soil nitrogen concentration was 0.36 g cm⁻³ and 0.29 g cm⁻³ at 0 cm to 15 cm and 15 cm to 30 cm depth, respectively (Centre for Ecology and

Hydrology 2013). Soil depth was not measured but was sufficiently deep to avoid limitations to early tree growth.

The site use was previously improved pasture, which was sprayed before planting with Propazymide (3.75 litres ha⁻¹) to kill the sward. The transplants were planted manually using a "T" notch and protected in 60 cm tubes. Planting was at 2.5 m spacing between rows and 1.5 m spacing within rows giving a stocking rate of 2667 stems ha⁻¹. Routine spraying of weeds was undertaken twice during each growing season using glyphosate (5 litres ha⁻¹). The design adopted for the trial was a randomised complete block design, which is the most commonly used design in forest experiments (Wright & Andrew 1976) and large 10 \times 8 tree plots were adopted.

Measurements and overview of analysis for each study

Measurements taken in the studies are described in the four sections below. For the measurements two trees of each of the four species were selected randomly from each of the six replicates in the trial. Shining gum had died in its first winter and is not included as part of this study.

Stem volume and biomass

Height and root collar diameter were measured for the twelve trees of each species in November 2010 (after two growing seasons) and November 2011 (after three growing seasons). Between November 2010 and 2011 all the cider gum had died and so the later measurements were not possible for this species. Height was measured using a height rod, while the root collar diameter was measured to the nearest 0.1 mm using a digital vernier gauge and taking the mean of two measurements taken at 90° to one another. Stem volumes were calculated using height (h) and diameter (d) and assuming that the tree stems were conical in shape. To enable stem weights for the trees to be estimated, wood samples were taken from a different sample of five trees of each species and sections were cut from the base, middle and top of their stems. Volumes of these stem samples were measured by a water displacement method using OHAUS analytical standard scales to measure weight which was converted to a volume using a water density of 1 g cm⁻³. Stem samples were oven dried at a temperature of 80 °C for 3 days, until no further loss in weight was observed and then weighed again to obtain dry weight. Specific gravity (SG) was then calculated for the wood samples and SG (g cm⁻³) and V (cm³) were multiplied together to estimate whole-stem dry weight of the study trees.

Leaf area

In September 2010 after two growing seasons, the crowns of the twelve alder, ash and sycamore trees measured for stem volume were wrapped in plastic bird net-

Tab. 2 - Climate at the trial from: (1) the Establishment Management Information System (EMIS); and (2) from 1971 to 2000 average data from the Newton Rigg weather station (Met Office 2014a, except for minimum temperature, which is from Met Office 2014b). (AT5): accumulated temperature above 5 °C; (CT): continentality; (DAMS): detailed aspect method of scoring; (MD): moisture deficit. A detailed description of these variables is found in Pyatt et al. (2001). Annual rainfall = summer rainfall + winter rainfall.

Parameter	Value
AT5 ¹ (degrees yr ⁻¹)	1503.4
CT ¹ (°C)	6.3
DAMS ¹	14
MD ¹ (mm)	148.2
Summer Rainfall (mm) ¹	386.4
Winter Rainfall (mm) ¹	396.2
Mean Min Temp (°C) ²	0.4 (Jan)
Min Temp (°C) ²	-14°C
Frost days ²	57.6
Mean Max Temp (°C) ²	19.4 (Jul)

ting to trap leaves as they fell. For sycamore the collections of leaves in late October was straightforward as most of the leaves had already been shed, but for alder, many leaves had to be carefully removed from the crowns of the sample trees. For trees with less than fifty leaves all leaves were measured and for those with more than 50 leaves, all leaves were counted and a systematic sample of 50 was taken. For each leaf, length (L) along the mid rib and width (W) at the widest point of the lamina and petiole length (P) was measured to the nearest millimetre. The use of netting to capture leaves proved to be unsuitable for trapping leaves of ash as their compound leaves disintegrated and some of the small leaflets fell out of the bird netting. As such, the leaf length and width could not be measured but the leaf stalk (S) without the leaflets, which remained trapped in the netting was measured for each leaf. For cider gum, the evergreen species, the method of trapping fallen autumn leaves was not appropriate. For each of the twelve trees, all the leaves were counted, classified as mature or juvenile and 50 leaves were removed from the trees in a systematic way from the bottom to top of the trees to ensure a good spread. Measurements of L, W and P were taken for each type of leaf.

From the leaves collected, a sample of forty was taken for each tree species across the range of sizes. L, W and P was measured and also S for ash and the leaf area (LA) was then determined using Compu Eye software (<http://www.ehabsoft.com/CompuEye/LeafSArea>) and an Epson Perfection 1240[®] flatbed scanner. For cider gum forty juvenile leaves and forty mature leaves were measured. For all species, leaves were then dried for 48 hours at a temperature of 70 °C and weighed to obtain an oven-dried weight (M) using OHAUS analytical standard scales and following the approach adopted by Verwijst & Wen (1996). As the original ash leaves had disintegrated new ash leaves were collected at the end of the summer of the following year for leaf area and weight determination purposes.

The total leaf area for the twelve sample trees of the four species was calculated using allometric methods, similar to the approach adopted in other studies (Wargo 1978, Verwijst & Wen 1996, Serdar & Demirosoy 2006, Ugese et al. 2008). This involved the determination of relationships between measurements of L and W (and S for ash) to leaf area and leaf weight using least squares regression. Best fit functions were selected based on R² and standard error statistics. Best fit relationships were used to estimate the leaf area of each leaf sampled from the twelve trees of each species. For each tree, a mean leaf area was calculated and this was multiplied by the total number of leaves present to obtain an estimate of total leaf area per tree. For the twelve trees of each species,

the results from the leaf area measurements and of the stem weights were used to SLA (leaf area/leaf dry mass) and LAR (leaf area/stem dry weight) parameters. LAR was calculated based on stem dry weight rather than the whole tree weight as below ground biomass was not assessed.

Growing season

The same twelve trees of each species used in the leaf area study, were assessed during 2011 to determine the length of the third growing season of the tree species at the trial. The method adopted elements from a study of leaf development in rowan (*Sorbus aucuparia* – Forest Research 2010) and one investigating leaf senescence in birch (*Betula pendula* – Worrell 2006). The development of the bud was scored on a 0-5 scale with 0 for a dormant bud and 5 for full leaf expansion (the scale was 1 to 6 in original study from Forest Research 2010). The stages in the bud burst scoring were as follows:

0. bud is closed and in a fully dormant winter state;
1. bud is swollen and the bud scales just started to open, however the bud is still vertical;
2. bud scales have separated and the tightly furled leaves are visible. The bud is bent sideways and can appear “hooded”;
3. bud scales are completely separated, leaves are starting to unfurl and separate but the leaflets (pinnae) on each leaf remain still furled – the leaves appear brownish in colour since the underside is predominantly visible;
4. the leaves are elongated and leaflets have started to separate as well. The appearance is now much more green since the topside of the leaves is now visible;
5. all leaflets have separated on the lowest two leaves and the shoot is expanding.

The end of the growing season was assessed through a five stage leaf retention score based on a four stage scoring system originally developed by Worrell (2006 – a zero was added for no leaves). As the trees

were still relatively small, the assessment was made by estimating the percentage of the combined leaf area of the tree crown which was still green, not yellow or brown or had lost leaves. This was scored in the following categories:

0. No leaves present;
1. One leaf present to 20% of crown green;
2. 21-40% of crown green;
3. 41-60% of crown green;
4. 61-80% of crown green;
5. 81-100% of crown green.

For ash, sycamore and alder the growing season length was calculated by multiplying the bud development score or the leaf retention score by number of days. This gave a relative measure of photosynthetic duration. The growing season for cider gum, an evergreen tree could not directly be measured in the same way.

Resource capture efficiency

For each of the twelve ash, alder and sycamore trees the influence of growing season and leaf area on growth was examined using a resource capture efficiency index (RCI), calculated by multiplying tree growing season (collected in 2011) by leaf area (collected in 2010). The formula and units of measurement are described below (eqn. 1):

$$RCI = LA \cdot LR \cdot D$$

where LA is the leaf area (m²), LR is the leaf retention score, and D is the length (in days) of the growing season. The relationship between stem dry weight in 2010 and resource capture efficiency was investigated.

Statistical analysis

Statistical tests were conducted using IBM SPSS Statistics v19. The approaches used to test variables for significance of differences between species is described in Fig. 1.

Regression was used to characterise relationships between L, W and LA and between L, W and LDW. IN SPSS there were eleven functions available for regression

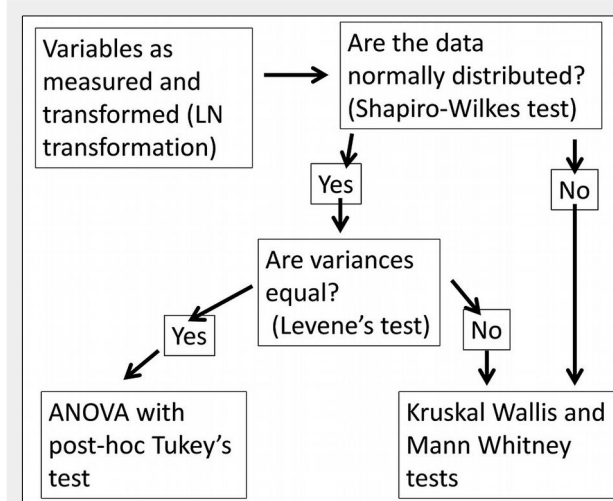


Fig. 1 - Approach used to determine significance of differences between variables.

Tab. 3 - Height, stem diameter and volume for each species after two and three growing seasons. (1): ANOVA and Tukey's test (mean shown); (2): Kruskal-Wallis and Mann-Whitney U test (median shown); (3): natural logarithm transformed then ANOVA and Tukey's test (mean shown). The same lower case letter (a, b or c) denotes no significant difference between species.

Species	2 growing seasons			3 growing seasons		
	Height ¹ (cm)	Diameter ² (mm)	Stem volume ² (cm ³)	Height ³ (cm)	Diameter ³ (mm)	Stem volume ² (cm ³)
Alder	155.5 ^a	28.7 ^a	9.6 ^a	194.5 ^a	43.8 ^a	23.0 ^a
Ash	119.0 ^b	20.7 ^b	6.4 ^b	133.8 ^b	27.4 ^b	9.5 ^b
Cider gum	199.5 ^c	35.7 ^c	18.0 ^c	-	-	-
Sycamore	134.0 ^{ab}	14.3 ^b	4.9 ^b	162.0 ^{ab}	20.0 ^b	8.1 ^b

Tab. 4 - Specific gravity (SG) and calculated stem dry weight (M) after two growing seasons from 12 randomly selected trees of each species. Kruskal-Wallis and Mann-Whitney U test applied to specific gravity and stem dry weight (medians shown). The same lower case letter (a, b or c) denotes no significant difference between species.

Species	Specific gravity (g cm ⁻³ = Mg m ⁻³)	Stem dry weight (g)
Alder	0.391 ^a	3.759 ^a
Ash	0.563 ^b	3.539 ^{ab}
Cider gum	0.553 ^c	9.896 ^c
Sycamore	0.497 ^c	2.390 ^b

and the best-fit equation was selected by a combination of the smallest standard error of the estimate (SEE) and the highest R². The same approach was used to define a relationship between stem dry weight and the resource capture efficiency.

Results

Where non parametric approaches to a-

analysis have been applied the median is shown as a measure of centrality, otherwise the mean for the data is presented.

Stem volume and biomass

The stem volumes of the twelve trees for the four tree species were assessed in late 2010 after two growing seasons and for the surviving three species in late 2011 after

three growing seasons. The data for height, basal stem diameter and calculated volume are shown in Tab. 3. For the two and three growing seasons height, diameter and stem volume were compared between species and significant differences were found by species (Tab. 3).

Tab. 4 shows the specific gravity and stem dry weights after two growing seasons. Kruskal-Wallis and Mann-Whitney tests were applied to these data and significant differences were found and are also described in Tab. 4. Medians for these data are shown.

Leaf area

To determine leaf area, relationships between L, W and LA and between L, W and LDW were investigated. The results from best-fit regressions are described in Tab. 5 and Tab. 6. LA (Tab. 5) and LDW (Tab. 6) were estimated for the twelve trees of each species by applying the regression models to the L × W measurements for all but ash, where they were estimated from leaf stalk length. Kruskal-Wallis test and Mann-Whitney tests showed highly significant differences in leaf number, LA and LDW between species. The LA of alder and sycamore were not significantly different, but all others were significantly different. The LDW of cider gum was different from all others, but differences between the other species were not significant. In terms of leaf number, differences between ash and sycamore were not significant but were significantly different from other species as were alder and cider gum.

LAR and SLA was calculated for the four tree species and the median values are shown in Fig. 2. Statistically significant differences in LAR and SLA were found between species.

Kruskal-Wallis and Mann-Whitney tests were applied to the LAR data and ash LAR was found to be significantly different from the other three species. Kruskal-Wallis and Mann-Whitney tests demonstrated that the SLA of all species were significantly different from each another, except for ash and cider gum. P values were significant for SLA and very highly significant for LAR.

Growing season

The period of bud burst and senescence for ash, sycamore and alder for 2011 are shown in Fig. 3. Alder had a longer growing season than the other two species, with an earlier and more rapid bud burst and a later and longer period leading up to complete leaf drop. Ash and sycamore showed a similar response, with sycamore having more rapid bud burst and being slower to drop its leaves.

Cumulative growing season index data was not normally distributed and a Kruskal-Wallis test showed that differences in growing season between species were highly significant, while Mann-Whitney tests showed that there were very highly

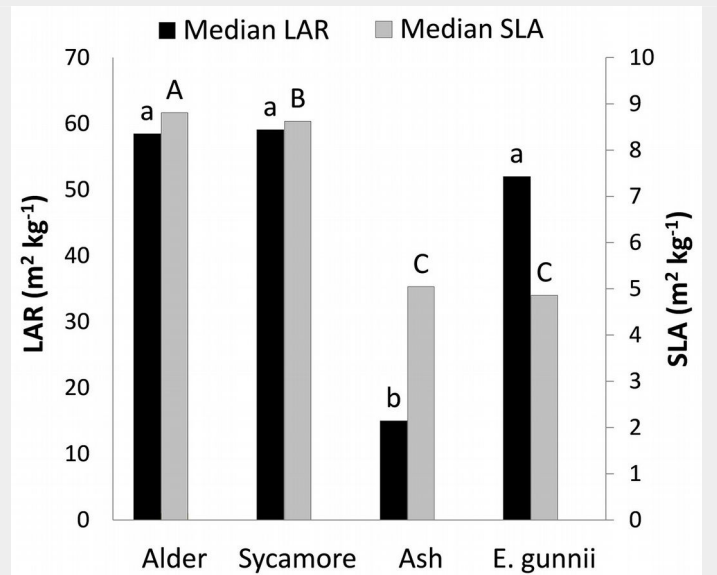
Tab. 5 - Description of the models predicting leaf area, where y is mean area of one leaf (LA) in cm² and x is L (cm) × W (cm) of the leaf, except for ash where x is leaf stalk length and median leaf area by species. Total tree LA was calculated by multiplying number of leaves by the mean area of one leaf and converted in m².

Species	Number leaves	Regression model	R ²	SEE	Median tree LA (m ²)
Alder	202 ^a	$y = 0.325 x^{1.102}$	0.941	0.202	0.1919 ^a
Ash	22 ^b	$y = 0.1201 x^{2.1891}$	0.707	0.524	0.0627 ^b
Sycamore	25 ^b	$y = 0.532 x^{1.021}$	0.964	0.197	0.1856 ^a
<i>E. gunnii</i> (mature)	657 ^c	$y = 0.052 x^2 + 0.448 x + 1.032$	0.967	0.947	0.4999 ^c
<i>E. gunnii</i> (juvenile)		$y = 0.7714 x^{0.943}$	0.881	0.216	

Tab. 6 - Description of the models predicting leaf area where y is LDW of a leaf in grammes and x is L (cm) × W (cm) of the leaf, except for ash where x is leaf stalk length. Whole tree LDW was calculated by multiplying number of leaves by the mean dry weight of a leaf.

Species	Regression model	R ²	SEE	Median tree LDW (g)
Alder	$y = 0.054 + 0.001 x + 0.0000751 x^2 - 0.000000292 x^3$	0.967	0.041	21.75 ^a
Ash	$y = 0.004 x^2 + 0.005 x - 0.029$	0.853	0.187	12.44 ^a
Sycamore	$y = 0.007 - 0.20 x$	0.970	0.099	23.63 ^a
<i>E. gunnii</i> (mature)	$y = 0.010 x + 0.001 x^2 + 0.029$	0.981	0.017	100.98 ^b
<i>E. gunnii</i> (juvenile)	$y = 0.012 x + 0.021$	0.932	0.300	

Fig. 2 - Leaf Area Ratios (LAR) and Specific Leaf Areas (SLA) for the four tree species. Different letters above the bars indicate a significant difference. Confidence intervals are not given because of lack of normality.



significant differences between sycamore and alder, and ash and alder.

Characterising resource capture efficiency

A correlation was performed of resource capture index against stem dry weight, which gave an R of 0.729 and was very

highly significant ($p < 0.0001$). A regression was conducted and the best fitting function was quadratic ($R^2 = 0.557$, $SEE = 1.233$, $y = -0.17x^2 + 0.683x + 2.267$ – Fig. 4).

As a comparison correlations were separately performed for the two components (growing season index and LA) of the resource capture index against stem dry

weight. For growing season index, the correlation with stem dry weight was relatively weak, with an R of 0.444 and a high significance ($p < 0.01$). In contrast, the correlation between dry weight and LA was stronger, with an R of 0.733 and was very highly significant ($p < 0.0001$). A regression showed the best fitting function to be

Fig. 3 - Bud burst and leaf retention of ash, sycamore and alder over the growing season of 2011.

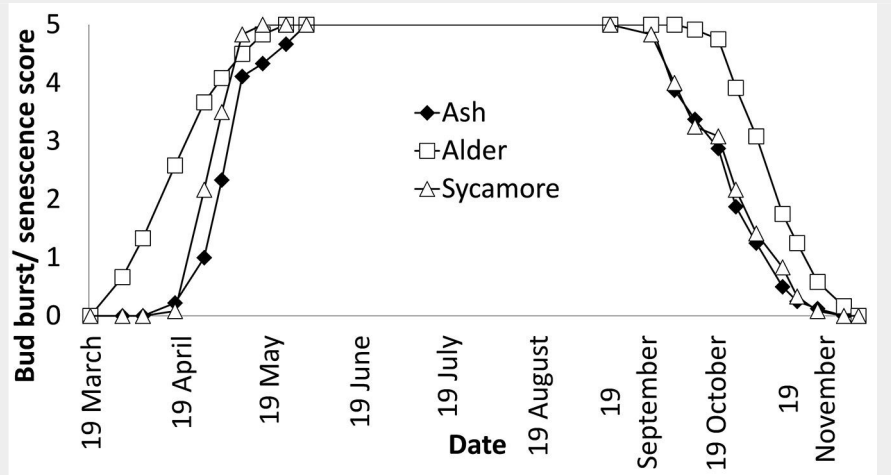
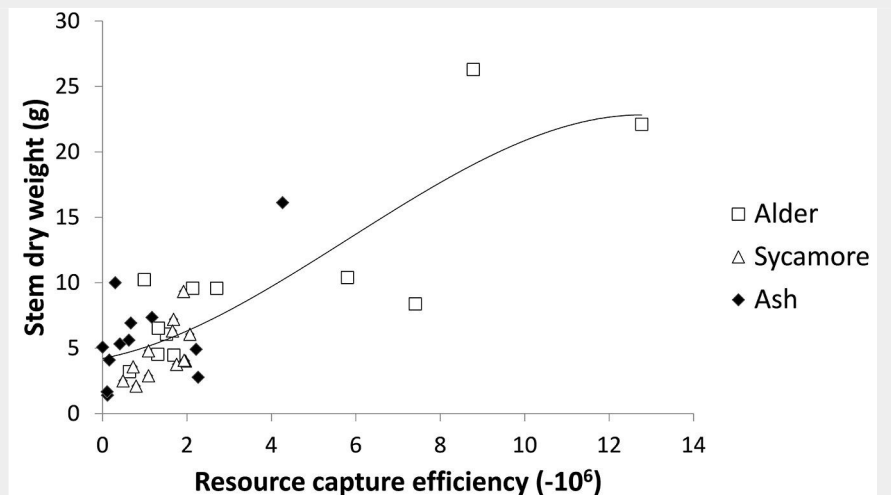


Fig. 4 - Relationship between stem dry weight and resource capture efficiency.



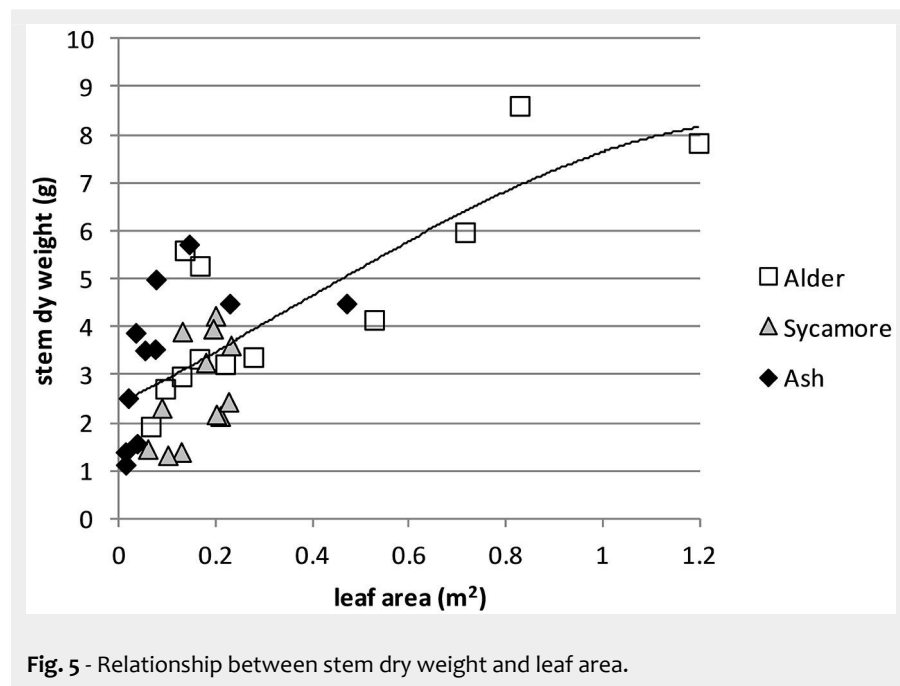


Fig. 5 - Relationship between stem dry weight and leaf area.

cubic ($R^2 = 0.542$, $SEE = 1.256$, $y = -1.977x^3 + 2.132x^2 + 5.093x + 2.391$ - Fig. 5).

Discussion

The winter of 2009-2010 was the coldest in the UK since 1978-1979 and the UK experienced the coldest December in 100 years (Prior & Kendon 2011). This was followed by another severe winter, which apart from that of 2009-2010, was the coldest since the winter of 1985-1986 (Anonymous 2011). The native and naturalised broadleaves were able to cope with these conditions, but the eucalypts fared badly, particularly the less cold-tolerant shining gum which exhibited complete mortality over each of the two severe winters. An analysis of the cold damage at the trial is described in Leslie et al. (2014). Eucalypts have been planted on a limited extent in the UK; between 2011 and 2016 nurseries sold 220,000 transplants (Purse & Leslie 2016b) and this scale represented trial rather than commercial planting. However, the limited information on suitable origins for cider gum (Cope et al. 2008) and shining gum (Evans 1986) suggests that the origins used in this trial were not particularly well adapted. Furthermore, it is accepted that shining gum is one of the least hardy eucalypts planted in the UK and it is recommended that it be planted only within 20 km of the coast in southern England and closer to the coast elsewhere in the UK (Purse & Leslie 2016a). The severely cold conditions and the origins planted explain some of the eucalypts poor performance.

Of the tree species that survived the first winter, the largest stem volumes were achieved by cider gum and alder, with the eucalypt producing nearly twice the volume of alder (Tab. 3). Cider gum had accumulated the largest leaf area, which would partly explain the fast growth of this species (Tab. 5). The median leaf area of

trees of alder (0.1919 m^2) was significantly different from ash (0.0627 m^2) and cider gum (0.4999 m^2), while that of sycamore (0.1856 m^2) was significantly different from cider gum. While ash had the lowest leaf area, it attained nearly the same stem volume as sycamore suggesting that it exhibits greater photosynthetic efficiency. Also, the leaf area of alder was not significantly different from sycamore yet it attained a significantly larger stem volume. These observations suggest sycamore has low photosynthetic efficiency. By the end of the third growing season cider gum had died in the winter of 2010-2011 and the relative ranking of the remaining species in terms of stem volume remained the same.

The leaf area of the trees was measured at the end of the growing season and this may not have fully captured the leaf area over the whole season, as it does not incorporate leaf turnover. There are considerable differences in leaf longevity between temperate tree species; mean leaf lifespan of alder is 90 days and in maples and oaks can be as long as 180 days (Kikuzawa 1995). Leaf longevity may explain some of the differences found between species in SLA. The SLA of alder and sycamore was relatively high and cider gum and ash was relatively low (with no significant difference between the two). This suggests a greater allocation of resources per unit leaf area in cider gum and ash and less resources per unit leaf area in sycamore and alder. Generally, there is a positive relationship between leaf mass, leaf area and the longevity of the leaves (Wright & Westoby 2002). Thus some trees invest relatively little in each metre of leaf area, allowing rapid build up of canopy, fast cycling of leaves and high initial growth. In contrast, other trees invest more heavily in each square metre of leaf area but retain these leaves for longer, resulting in a longer pe-

riod of return from those leaves (Wright & Westoby 2002).

In terms of SLA, this would suggest that trees which retain their leaves for longer periods will have a lower SLA and those with short leaf longevity have a high SLA. Alder leaves are retained by the tree for a relatively short period (Kikuzawa 1995) and so, as found in this study (Fig. 2) exhibit a relatively high SLA of ($8.8 \text{ m}^2 \text{ kg}^{-1}$) which would support such a strategy, each leaf being allocated a relatively low investment of resources. There are no studies of the leaf longevity of cider gum, but Whitehead & Beadle (2004) note that in general eucalypt leaves are thick, tough and long-lived, a reflection of their evergreen habit and their association with sites of low soil nutrients and mild winters. A study in Australia found *Eucalyptus paniculata* leaf lifespan to be 1.09 years and that of *Eucalyptus umbra* to be 2.06 years (Wright & Westoby 2002), but Laclau et al. (2009) studying *Eucalyptus grandis* in Brazil found unfertilised trees in plantation retained their leaves for 111 days. The relatively low SLA ($4.9 \text{ m}^2 \text{ kg}^{-1}$) of cider gum (Fig. 2) suggests a relatively long leaf lifespan. Ash also exhibited a low SLA and a study by Alberti et al. (2005) of older trees also found a low SLA for ash, compared with Wych elm (*Ulmus glabra*). Another characteristic of trees with high SLA, such as the alder and sycamore in this study, is that they tend to exhibit high photosynthetic nitrogen use efficiencies, whereas trees with a low SLA adopt a different strategy, absorbing a greater proportion of the light available through a higher chlorophyll content in the leaves (Poorter & Evans 1998).

Statistically significant differences in specific gravity were found between species, with alder having a particularly low density (Tab. 4), also being lower than the 0.540 Mg m^{-3} cited by Claessens (2005 in Claessens et al. 2010), perhaps due to the young age of the trees. The specific gravity of ash was similar (0.550 as opposed to 0.560 Mg m^{-3}) to that found in larger trees from Italy (Alberti et al. 2005) and that of cider gum was similar (0.548 as opposed to 0.500 Mg m^{-3}) to that found in French plantations (AFOCEL 2003). The specific gravity was multiplied by stem volume enabling LAR (using stem weight rather than the conventional whole tree weight) to be calculated. This was compared by species and very highly significant differences were found between ash and all other species. Therefore, ash supports a smaller leaf area per unit stem weight than sycamore, alder and cider gum (Fig. 2). A shortcoming of this experiment was not to estimate branch and root weight of the trees, as this would have enabled a true LAR to be calculated and a better understanding of the relative allocation of resources between different parts of these trees. There are known to be differences in the allocation of resources between stem and leaves and roots between tree species (Poorter et al. 2012). At

the trial differences were observed; some individuals of shining gum exhibited instability due to excessive above ground growth and had fallen over, despite being supported by a tree shelter and bamboo cane. The other species showed good stability.

Phenology of temperate trees is determined by temperature and photoperiod, with the importance of each of these factors varying with tree species (Basler & Korner 2012, Vitasse et al. 2012). This study used visual assessment of budburst, which is the normal method used in field dormancy studies (Cooke et al. 2012). The pattern of bud burst and leaf fall between ash, alder and sycamore is illustrated in Fig. 3. This shows that alder begins to come into leaf earlier than the other two species and also retains its foliage for longer into autumn, and that ash flushes later and loses leaves earlier in autumn than the other two tree species. Basler & Korner (2012) found that there was no effect of photoperiod on bud burst of ash or sycamore, while a study (Vitasse et al. 2012) on the effect of temperature on budburst in seven temperate trees showed that of those planted at this trial, ash had the highest sensitivity to temperature, with sycamore being in the middle of the ranking. Spring 2011, when the assessment was made was particularly warm, being the warmest across the UK since 1910 (Met Office 2014c). It is likely therefore that the growing season for 2011 was abnormally long for these species.

The phenology data for ash, sycamore and alder were based on monitoring the development and senescence of leaves on the terminal bud, but development of leaf area in trees is complex. Focusing on the terminal bud does not allow the pattern of whole tree leaf area to be examined and pioneer trees tend to adopt a different approach compared to climax species. Climax or forest tree species show a flushing habit of leaf development, whereas pioneers show a successive pattern of leaf development (Kikuzawa 1995). The patterns of flushing between alder, ash and sycamore showed differences (Fig. 3). The progression of leaf unfolding started earlier in alder but was also more gradual in alder than in the other two species, which exhibited rapid flushing over a relatively short period.

Combining leaf area measurements from 2010 with growing season data from 2011 to create a resource capture index explained 56% of the differences in 2010 stem dry weight of the trees (Fig. 4). The best fitting relationship in terms of R^2 was a curve, but a linear relationship also provided a good fit ($R^2=0.548$). The nature of the relationship is difficult to identify precisely because of the lack of data at the higher end of the combined leaf area and growing season index. A possible explanation for a curved relationship between growth potential index and stem dry weight is that light interception by canopies

is not linearly related to leaf area index, but follows a similar curved relationship due to mutual shading of leaves (Cannell et al. 1989). This is supported by the curvilinear relationship between leaf area and stem dry weight (Fig. 5). Using leaf area alone explained 54% of the variation in stem dry weight, only marginally poorer than combining leaf area and growing season. This can be explained by the relatively small differences in growing period between the tree species. Had the origins been collected across a wider range of latitudes it is likely that variation in growing season between species would have been greater.

Growth is related to three variables: the site resources, the resource capture efficiency and the resource use efficiency (Stape et al. 2004). Multiplying leaf area by growing season provided a measure of the resource capture efficiency of the tree species at this trial. A combination of greater leaf area and longer period of growth has enabled alder to accumulate stem dry weight more rapidly than ash and sycamore (Fig. 4). The rate of photosynthesis in a tree species is strongly linked to the nitrogen content of leaves due to large amount of leaf nitrogen devoted to chloroplasts (Poorter & Evans 1998) and alder, being a nitrogen fixing tree is likely to be able to devote larger concentrations of nitrogen to its leaves than the other species. This study also showed that alder exhibited a high SLA (Fig. 2), allocating relatively little biomass for every square metre of leaf area. Trees with high SLA are known to exhibit high photosynthetic nitrogen use efficiency (Poorter & Evans 1998) and in general high relative growth rates (Antinez et al. 2001). The higher leaf nitrogen concentration and this higher photosynthetic nitrogen efficiency may partly explain why alder has been able to build up leaf area rapidly and also use this leaf area efficiently. A further strength of alder is its relatively long growing season compared with sycamore and ash (Fig. 3). Alder, is also known to have a short leaf longevity (Koike & Sanada 1989, Kikuzawa 1995), enabling it to replace damaged leaves rapidly.

The most rapid growing species, cider gum was able to develop the highest leaf area of any of the species over two growing seasons (Tab. 5), a contributory factor being that it retains leaves for more than one growing season. Other factors contributing to the high productivity are the long period of photosynthetic activity and the high photosynthetic efficiency known of eucalypts, particularly under conditions of high stomatal conductance (Whitehead & Beadle 2004). Furthermore, the opportunistic nature of eucalypt growth is likely to have enabled cider gum to exhibit a longer growing season than alder.

The leaf area of alder and sycamore were not significantly different (Tab. 5) and they both exhibit high SLA, yet alder had accu-

mulated a greater stem dry weight (Tab. 4), due to a longer period in leaf and potentially due to higher leaf nitrogen content, allowing higher rates of photosynthesis (Koike & Sanada 1989). Ash was the slowest growing species, and had the lowest leaf area (Tab. 5) and the shortest growing period of the four tree species (Fig. 3). Another factor may be low rate of photosynthesis in ash; a study by Koike & Sanada (1989) found that ash (*Fraxinus mandshurica*) had a relatively low rate of photosynthesis across soils with a range of levels of soil nitrogen, when compared with alder (*Alnus hirsuta*) and birch (*Betula maximowicziana*).

There were several limitations to this study. The method used to harvest leaves at the end of the growing season was unsuitable for ash and measuring leaf area at one point in time ignored potential turnover of leaves during the growing season. The approach used to measure growing season did not allow the estimation of growing season for cider gum, an evergreen tree. This prevented a comprehensive comparison of the trees surviving the first winter. If the study was repeated the root and branch biomass would also be estimated to enable calculation of the LAR. Furthermore, growing season and leaf area was assessed in two different years and it would have been more consistent to measure these in the same year.

Conclusion

It is clear that there are significant differences in growth between the tree species tested at this trial. By the end of the second growing season all shining gum, the fastest growing species had been killed by the cold winter of 2009-2010. Of the surviving three species, the species with greatest stem volume after two growing seasons was cider gum followed by alder (Tab. 3). After three growing seasons none of the original eucalypts survived and alder exhibited the largest stem volume, although the specific gravity of the wood was less than the other species (Tab. 4). Cider gum had developed a particularly high LA after two growing seasons, with alder and sycamore following with LA that were not significantly different (Tab. 5). However, alder had grown much more quickly and its longer growing season (Fig. 3) may contribute to this higher growth rate. LAR (stem weight) was particularly low for ash (Fig. 2), indicating that ash allocates less relative resources to leaves than to its stem. SLA was also low for ash, as well as cider gum indicating that these species invest relatively high resources in each unit area of leaf area, relative to alder and sycamore (Fig. 2). The strong influence of LA and growing season on productivity was shown by creating a resource capture efficiency by multiplying growing season by LA, and this explained 56% of the variation in stem dry weight between trees (Fig. 4). However, this was only marginally better than

LA alone (Fig. 5). It is likely that growing season would have a greater influence on growth if origins had been selected from a wider range of latitudes.

The results show that for biomass production on similar sites, alder would be a good candidate, being capable of rapidly accumulating LA and exhibiting a long growing season, resulting in high productivity. However, studies have shown that stands of alder emit N₂O, which may possibly make it less attractive as a candidate tree for sequestration of greenhouse gas (Arnold et al. 2005, Mander et al. 2008).

List of abbreviations

The following abbreviations have been used throughout the text:

- L: length of leaf;
- LA: leaf area;
- LAR: leaf area ratio;
- LMF: leaf mass fraction;
- LDW: leaf dry weight;
- M: oven dry weight of stem;
- RGR: relative growth rate;
- S: length of petiole and main midrib in ash;
- SG: specific gravity;
- SLA: specific leaf area;
- V: stem volume;
- W: maximum width of leaf.

Acknowledgements

We would like to acknowledge funding from the University of Cumbria and Alastair Chalmers of Pyro Classic stoves that made the establishment of the field trial possible. We would also like to thank staff and students at the University of Cumbria for their help in establishing and maintaining the trial and to Graham and Chris Leslie for helping with assessments. Several people have provided useful information for this article; Ted Wooddisse of Nottinghamshire County Council and the late John Purse of Primabio on aspects of eucalypts and Matthew Wilkinson and Jason Hubert of Forest Research who provided methods for monitoring and assessing leaf phenology. The authors would like to acknowledge their important contribution and also that of Dr E. Bakr of the Plant protection Institute in Cairo who kindly provided the Compu Eye software used to measure leaf area. We also thank the two anonymous reviewers for making constructive suggestions for improvement to the original draft article.

References

AFOCEL (2003). Information Eucalyptus, Itineraire technique et production [Information Eucalyptus, technical route and production]. Fiche Information Eucalyptus no. 2, AFOCEL, Nangis, France, pp. 4. [in French]

Alberti G, Candido P, Peressotti A, Turco S, Piusi P, Zerbi G (2005). Aboveground biomass relationships for mixed ash (*Fraxinus excelsior* L. and *Ulmus glabra* Hudson) stands in Eastern Prealps of Friuli Venezia Giulia (Italy). *Annals of Forest Science* 62: 831-836. - doi: [10.1051/forest/2005089](https://doi.org/10.1051/forest/2005089)

Anonymous (2011). UK seasonal weather summary, winter 2010/2011. *Weather* 66: 99.

Antinez I, Retamosa EC, Villar R (2001). Relative growth rate in phylogenetically related deciduous and evergreen woody species. *Oecologia* 128: 172-180. - doi: [10.1007/s004420100645](https://doi.org/10.1007/s004420100645)

Arnold KV, Nilson M, Hinell B, Weslien P (2005). Fluxes of CO₂, CH₄ and N₂O from drained organic soils in deciduous forest. *Soil Biology and Biochemistry* 37: 1059-1071. - doi: [10.1016/j.soilbio.2004.11.004](https://doi.org/10.1016/j.soilbio.2004.11.004)

Basler D, Korner C (2012). Photoperiod sensitivity of bud burst in 14 temperate forest tree species. *Agricultural and Forest Meteorology* 165: 73-81. - doi: [10.1016/j.agrformet.2012.06.001](https://doi.org/10.1016/j.agrformet.2012.06.001)

Cannell MGR, Sheppard LJ, Milne R (1989). Light use efficiency and the woody biomass production of poplar and willow. *Forestry* 61 (2): 125-136. - doi: [10.1093/forestry/61.2.125](https://doi.org/10.1093/forestry/61.2.125)

Centre for Ecology and Hydrology (2013). Soil data sheet for the Newton Rigg trial. Centre for Ecology and Hydrology, Lancaster, UK, pp. 1.

Claessens H, Oosterbaan A, Savill P, Rondeux J (2010). A review of the characteristics of black alder (*Alnus glutinosa* (L.) Gaertn.) and their implications for silvicultural practices. *Forestry* 83 (2): 163-175. - doi: [10.1093/forestry/cpp038](https://doi.org/10.1093/forestry/cpp038)

Cooke JE, Eriksson ME, Juntilla O (2012). The dynamic nature of bud dormancy in trees: environmental control and molecular mechanisms. *Plant, Cell and the Environment* 35 (10): 1707-1728. - doi: [10.1111/j.1365-3040.2012.02552.x](https://doi.org/10.1111/j.1365-3040.2012.02552.x)

Cope M, Leslie AD, Weatherall A (2008). The potential suitability of provenances of *Eucalyptus gunnii* for short rotation forestry in the UK. *Quarterly Journal of Forestry* 102 (3): 185-194. [online] URL: <http://www.cabdirect.org/cabdirect/abstract/20083164207>

Evans J (1986). A re-assessment of cold-hardy eucalypts in Great Britain. *Forestry* 59 (2): 223-242. - doi: [10.1093/forestry/59.2.223](https://doi.org/10.1093/forestry/59.2.223)

Forestry Commission (2016). Regions of provenance and seed zones in Great Britain (including zones for indigenous Scots pine.) Forestry Commission, Edinburgh, UK. pp. 1. [online] URL: <http://www.forestry.gov.uk/pdf/FRMGuidelinesRoPmap.pdf>

Forest Research (2010). Assessing bud burst in rowan. Forest Research Northern Research Station, Roslin, UK, pp. 4.

Hardcastle PD (2006). A review of the impacts of short-rotation forestry. LTS International, Edinburgh, UK, pp. 153. [online] URL: <http://www.forestry.gov.uk/pdf/SRFFinalreport27Feb.pdf>

Hubert J, Cundall E (2006). Choosing provenance in broadleaved trees. Forestry Commission Information Note no. 82, Forestry Commission, Edinburgh, UK, pp. 12.

Kikuzawa K (1995). Leaf phenology as an optimal strategy for carbon gain in plants. *Canadian Journal of Botany* 73 (2): 158-163. - doi: [10.1139/b95-019](https://doi.org/10.1139/b95-019)

Koike T, Sanada M (1989). Photosynthesis and leaf longevity in alder, birch and ash seedlings grown under different nitrogen levels. *Annals of Forest Science* 46 supplement: 476s-478s. - doi: [10.1051/forest:198905ART0106](https://doi.org/10.1051/forest:198905ART0106)

Laclau JP, Almeida JC, Gonçalves JL, Saint-André L, Ventura M, Ranger J, Moreira RM, Nouvellon Y (2009). Influence of nitrogen and potassium fertilization on leaf lifespan and allocation of above-ground growth in *Eucalyptus* plantations. *Tree Physiology* 29 (1): 111-124. - doi: [10.1093/treephys/tpno10](https://doi.org/10.1093/treephys/tpno10)

Leslie A, Mencuccini M, Perks M (2014). Frost damage to eucalypts in a short-rotation forestry trial in Cumbria (England). *iForest* 7 (3): 156-161. - doi: [10.3832/ifor1161-007](https://doi.org/10.3832/ifor1161-007)

Mander U, Lohmus K, Teiter S, Keiko U, Augustin J (2008). Gaseous nitrogen and carbon fluxes in riparian alder stands. *Boreal Environment Research* 13: 231-242.

Matthews RW, Broadmeadow MSJ (2009). The potential of UK forestry to contribute to Government's emissions reduction commitments. In: "Combating climate change - A role for UK forests. An assessment of the potential of the UK's trees and woodlands to mitigate and adapt to climate change" (Read DJ, Freer-Smith PH, Morison JIL, Hanley N, West CC, Snowdon P eds). The Stationery Office, Edinburgh, UK, pp. 139-162. [online] URL: <http://www.cabdirect.org/cabdirect/abstract/20103082977>

Met Office (2014a). 1971-2000 averages. Met Office, Exeter, UK, web site. [online] URL: <http://www.metoffice.gov.uk/public/weather/climate>

Met Office (2014b). Minimum temperature monthly lowest [deg C] January 1961-1990. Met Office, Exeter, UK, web site. [online] URL: <http://www.metoffice.gov.uk/public/weather/climate>

Met Office (2014c). Spring 2011. Met Office, Exeter, UK, web site. [online] URL: <http://www.metoffice.gov.uk/public/weather/climate>

Perks MP, Harrison AJ, Bathgate SJ (2006). Establishment Management Information System [EMIS]: delivering good practice advice on tree establishment in the uplands of Britain. In: "Sustainable forestry: from monitoring and modelling to knowledge management and policy science" (Reynolds KM, Ray D, Thomson AJ eds). CABI International, Oxford, UK, pp. 412-424.

Poorter H, Remkes C (1990). Leaf area ratio and net assimilation rate of 24 wild species differing in relative growth rate. *Oecologia* 83: 553-559. - doi: [10.1007/BF00317209](https://doi.org/10.1007/BF00317209)

Poorter H, Evans JR (1998). Photosynthetic nitrogen-use efficiency of species that differ inherently in specific leaf area. *Oecologia* 116: 26-37. - doi: [10.1007/s004420050560](https://doi.org/10.1007/s004420050560)

Poorter H, Niklas KJ, Reich PB, Oleksyn J, Poot P, Mommer L (2012). Biomass allocation to leaves, stems and roots: meta-analyses of interspecific variation and environmental control. *New Phytologist* 193: 30-50. - doi: [10.1111/j.1469-8137.2011.03952.x](https://doi.org/10.1111/j.1469-8137.2011.03952.x)

Prior J, Kendon M (2011). The UK winter of 2009/2010 compared with severe winters of the last 100 years. *Weather* 66: 4-9. - doi: [10.1002/wea.735](https://doi.org/10.1002/wea.735)

Purse J, Leslie AD (2016a). *Eucalyptus* - Part 1, species with forestry potential in the British Isles. *Journal of Forestry* 110 (2): 88-97. [online] URL: <http://insight.cumbria.ac.uk/2696/>

Purse J, Leslie AD (2016b). *Eucalyptus* - Part 2, findings from trial plantings, and silvicultural requirements in the British Isles. *Quarterly Journal of Forestry* 110 (3): 161-168. [online]

- URL: <http://insight.cumbria.ac.uk/2695/>
- Pyatt DG, Ray D, Fletcher J (2001). An ecological site classification for forestry in Great Britain. Bulletin no. 124, Forestry Commission, Edinburgh, UK.
- Serdar U, Demirsoy H (2006). Non-destructive leaf area estimation in chestnut. *Scientia Horticulturae* 108: 227-230. - doi: [10.1016/j.scienta.2006.01.025](https://doi.org/10.1016/j.scienta.2006.01.025)
- Stape JL, Blinkley D, Ryan MG (2004). Eucalyptus production and the supply, use and the efficiency of use of water, light and nitrogen across a geographical gradient in Brazil. *Forest Ecology and Management* 193 (1-2): 17-31. - doi: [10.1016/j.foreco.2004.01.020](https://doi.org/10.1016/j.foreco.2004.01.020)
- Tateno M (2003). Benefit to N₂-fixing alder of extending growth period at the cost of leaf nitrogen loss without resorption. *Oecologia* 137 (3): 338-343. - doi: [10.1007/s00442-003-1357-6](https://doi.org/10.1007/s00442-003-1357-6)
- Ugese FD, Baiyeri KP, Mbah BN (2008). Leaf area determination of the shea butter tree (*Vitellaria paradoxia* C. F. Gaertn). *International Agrophysics* 22: 167-170.
- Valladares F, Niinemets U (2008). Shade tolerance, a key plant feature of complex nature and consequences. *Annual Review of Ecology, Evolution, and Systematics* 39: 237-257. - doi: [10.1146/annurev.ecolsys.39.110707.173506](https://doi.org/10.1146/annurev.ecolsys.39.110707.173506)
- Verwijst T, Wen D-Z (1996). Leaf allometry of *Salix viminalis* during the first growing season. *Tree Physiology* 16: 655-660. - doi: [10.1093/treephys/16.7.655](https://doi.org/10.1093/treephys/16.7.655)
- Vitasse Y, Delzon S, Dufrene E, Pontallier J-Y, Louvet J-M, Kremer A, Michalet R (2012). Leaf phenology sensitivity to temperature in European trees: do within species populations exhibit similar responses? *Agricultural and Forest Meteorology* 149 (5): 735-744. - doi: [10.1016/j.agrformet.2008.10.019](https://doi.org/10.1016/j.agrformet.2008.10.019)
- Wargo PM (1978). Correlations of leaf area with length and width measurements of leaves of black oak, white oak and sugar maple. Research Note NE-256, Northeastern Forest Experiment Station, USDA Forest Service, Newtown Square, PA, USA. pp. 3. [online] URL: <http://books.google.com/books?id=J1RC9EW2rKkC>
- Whitehead D, Beadle CL (2004). Physiological regulation of productivity and water use in *Eucalyptus*: a review. *Forest Ecology and Management* 193: 113-140. - doi: [10.1016/j.foreco.2004.01.026](https://doi.org/10.1016/j.foreco.2004.01.026)
- Worrell R (1992). A comparison between European, continental and British provenances of some British native trees: growth, survival and stem form. *Forestry* 65 (3): 253-280. - doi: [10.1093/forestry/65.3.253](https://doi.org/10.1093/forestry/65.3.253)
- Worrell R (2006). Protocol for assessment for senescence and leaf size in birch. Forest Research, Northern Research Station, Edinburgh, Scotland, UK.
- Wright HL, Andrew IA (1976). Principles of experimental design. In: "A manual on species and provenance research with particular reference to the tropics" (Burley J, Wood PJ eds). Tropical Forestry Papers no. 10, Commonwealth Forestry Institute, Oxford, UK, pp. 67-81.
- Wright IJ, Westoby M (2002). Leaves at low versus high rainfall: coordination of structure, life-span and physiology. *New Phytologist* 155 (3): 403-416. - doi: [10.1046/j.1469-8137.2002.00479.x](https://doi.org/10.1046/j.1469-8137.2002.00479.x)