

Integrating area-based and individual tree detection approaches for estimating tree volume in plantation inventory using aerial image and airborne laser scanning data

Emily T Shinzato⁽¹⁾,
Yosio E Shimabukuro⁽¹⁾,
Nicholas C Coops⁽²⁾,
Piotr Tompalski⁽²⁾,
Esthevan AG Gasparoto⁽³⁾

Remote sensing has been increasingly used to assist forest inventory. Airborne Laser Scanning (ALS) systems can accurately estimate tree height in forests, and are being combined with more traditional optical images that provide further details about the horizontal structure of forests. To predict forest attributes two main techniques are applied to process ALS data: the Area Based Approach (ABA), and the Individual Tree Detection (ITD). The first part of this study was focused on the effectiveness of integrating ALS data and aerial imagery to estimate the wood volume in *Eucalyptus urograndis* plantations using the ABA approach. To this aim, we analyzed three different approaches: (1) using only ALS points cloud metrics (RMSE = 6.84%); (2) using only the variables derived from aerial images (RMSE = 8.45%); and (3) the integration of both 1 and 2 (RMSE = 5.23%), which underestimated the true volume by 2.98%. To estimate individual tree volumes we first detected individual trees and corrected the density estimate for detecting mean difference, with an error of 0.37 trees per hectare and RMSE of 12.68%. Next, we downscaled the total volume prediction to single tree level. Our approach showed a better result of the overall volume in comparison with the traditional forest inventory. There is a remarkable advantage in using the Individual Tree Detection approach, as it allows for a spatial representation of the number of trees sampled, as well as their volume per unit area - an important metric in the management of forest resources.

Keywords: Forest Inventory, Airborne Laser Scanning, Treetop Detection, *Eucalyptus* Plantation, Area-based Approach, LiDAR

Introduction

Intensively managed forest plantations have an important role, both nationally and internationally, due to their ability to efficiently produce large quantities of biomass. This biomass can be utilized in forms suitable for bioenergy or, after processing into cellulose-derivatives, in materials such as paper. The myriad uses of fibers derived from intensively managed plantation forests can aid in the reduction of anthropogenic pressures on natural forests, while simultaneously generating millions of jobs

(Payn et al. 2015).

In Brazil, 4.4 million jobs are generated directly and indirectly by forest plantations, and the total reforested area exceeds 7.6 million hectares (IBA 2014). Of this area, 72% is composed of *Eucalyptus* spp., a key genus in Brazilian forest plantations. The reasons for the success of *Eucalyptus* spp. plantations in Brazil include *Eucalyptus*' rapid growth, genetic improvement, and its tolerance of a wide range of climatic conditions (Silva et al. 2014).

In order to manage the growth and yield

of these plantations, annual forest inventories are required. In general, the traditional approaches to conducting plantation inventories follow the precepts of sampling theory, which is based on ground measurements collected from simple random sampling plots. The forest attributes of interest are then inferred for an entire stand based on observations collected at each sample plot (Paris & Bruzzone 2015). However, considering the difficulties in field surveys such as sampling error, bias, and the intensive use of time and labor, remote sensing represents an important additional tool for monitoring large areas accurately and efficiently.

Both active and passive remote sensors have been presented as feasible alternatives for estimating forest variables. High spatial resolution optical data is useful at providing spectral information on species and condition (Wang et al. 2004, Monnet et al. 2010), while active remote sensing technologies, such as Airborne Laser Scanning (ALS), can provide highly accurate forest height data (Wulder et al. 2000). When predicting forest inventory attributes using ALS data or aerial images, two main approaches can be applied: the Area-based Approach (ABA - Næsset 2002, White et al. 2013) and the Individual Tree Detection

□ (1) Department of Remote Sensing, National Institute for Space Research - INPE, São Paulo (Brazil); (2) Department of Forest Resources Management, University of British Columbia, Victoria, BC (Canada); (3) Department of Forest Sciences, Luiz de Queiroz College of Agriculture, University of São Paulo, Piracicaba (Brazil)

@ Emily T Shinzato (emilyshinzato@florestal.eng.br)

Received: Sep 21, 2015 - Accepted: Aug 26, 2016

Citation: Shinzato ET, Shimabukuro YE, Coops NC, Tompalski P, Gasparoto EAG (2017). Integrating area-based and individual tree detection approaches for estimating tree volume in plantation inventory using aerial image and airborne laser scanning data. *iForest* 10: 296-302. - doi: [10.3832/ifor1880-009](https://doi.org/10.3832/ifor1880-009) [online 2016-12-15]

Communicated by: Piermaria Corona

(ITD) approach (Popescu et al. 2002, Kaarti-nen et al. 2012).

To estimate volume in *Eucalyptus* spp. plantations Packalén et al. (2011) applied the ABA approach. In the ABA, the response variable (e.g., wood volume per unit area in $\text{m}^3 \text{ha}^{-1}$) is aggregated over a grid cell of predetermined size or over a plot size (Breindenbach & Astrup 2014). This response variable is estimated using predictor variables, which are derived from the ALS metrics directly or indirectly, such as the mean height, height percentiles, densities and proportions, or from image, such as the reflectance (Næsset 2002, Zhu & Liu 2015).

The ABA approach is most suited to the estimation of a number of crucial forest stand attributes over large areas (Næsset 2002, White et al. 2013). The prediction of stand attribute variables from ALS data, such as biomass, volume, basal area, mean diameter, or average height have been shown to have similar or improved accuracy compared to traditional inventory methods (White et al. 2013). However, when tree-level information such as stem number or species is desired, the ABA approach is less suitable (Breindenbach & Astrup 2014).

In this case, the ITD approach is the most appropriate to estimate individual tree characteristics. However, algorithms nor-

mally used in the ITD approach detect, on average, 75% of trees (Persson et al. 2002, Monnet et al. 2010). Therefore, the use of automatic ITD may lead to the non-detection of some trees, and can interfere with forest attributes prediction (Breindenbach & Astrup 2014).

Vastaranta et al. (2011) applied an alternative method to overcome the shortcomings of ITD detection, involving the aggregation of the tree numbers in a grid cell, according to ABA. By aggregating trees into grid cells it is possible to know how many trees were detected or not in each cell, so long as detection rates are compared with ground truth data and the most appropriate methodology to correct deviations is used. This approach, also used in this study, can lead to a reduction in the number of systematic errors, and to an increased accuracy in the estimation of the number of trees per hectare, a variable extremely important to forest managers (Simões 2008, Breindenbach & Astrup 2014).

According to Packalén et al. (2011), the advantage of using ITD approaches is that the correct detection of individual trees could reduce the number of plots needed for an accurate and unbiased inventory. Breindenbach & Astrup (2014) also note that the ITD approach is inherently more intuitive than ABA because the response

variables are related to each tree (the smallest unit in a management system), providing coordinates that can be tied to individual tree growth, as well as explicit links to tree growth and yield models. In the case of ALS data, ITD approaches require high density point clouds, which can be impractical because of the cost of data collection (Mehtätalo et al. 2014).

The merging of ALS and optical remote sensing data can assist in the accurate estimation of forest attributes, with algorithms based on height or brightness (Hudak et al. 2002, Næsset 2002, Wulder & Seemann 2003, Wang et al. 2004, Roberts et al. 2005, Monnet et al. 2010, Packalén et al. 2011). Saarela et al. (2015) integrated ALS and Landsat image data to improve accuracy of timber volume estimation as compared with estimates based on ALS and images variables alone. This comparison is also employed in the present study, though we used high spatial resolution images. For instance, the ABA and ITD approaches can be combined to estimate wood biomass or volume in forest plantations (Næsset 2002, Brandtberg et al. 2003).

In this study, we use ABA and ITD to estimate stand volume in *Eucalyptus* spp. plantations using ALS and high spatial resolution multispectral image data. To this goal, we first modeled the stand volume using standard ABA approaches, using different combinations of ALS-based and image-based metrics as independent model variables. Second, we used an ITD-based approach to estimate tree count, applying a correction method to improve single tree detection, which is integrated with the stand volume predicted using ABA. Finally, we merge the two approaches (ITD and ABA), that yields volume predictions at the single tree level. We conclude by discussing the possibilities of using ABA for individual tree volume predictions.

Materials and methods

Study area

The study was performed in a forest plantation owned by FIBRIA S.A. company, located in São Luiz do Paraitinga in São Paulo State, Brazil ($23^{\circ} 33' \text{ S}$, $45^{\circ} 34' \text{ W}$ and $23^{\circ} 30' \text{ S}$, $45^{\circ} 31' \text{ W}$ – Fig. 1). The dominant species in the study area is *Eucalyptus urograndis*, which is a hybrid between *Eucalyptus urophylla* and *Eucalyptus grandis* (Ferreira 1979). According to Köppen & Geiger (1954), the climate is humid subtropical (Cwa) characterized by cold winters and rainy summers, with average annual precipitation of 1210 mm and a mean monthly temperature of 20.2°C (CEPAGRI 2014). The topography of the study area is complex, with elevations varying from 974 to 1266 m a.s.l. and the average slope is 24.3 degrees.

The forest stands in the study area were planted in December 2006 and harvested between April and May 2013, following a standard 6.5 year rotation period. All har-

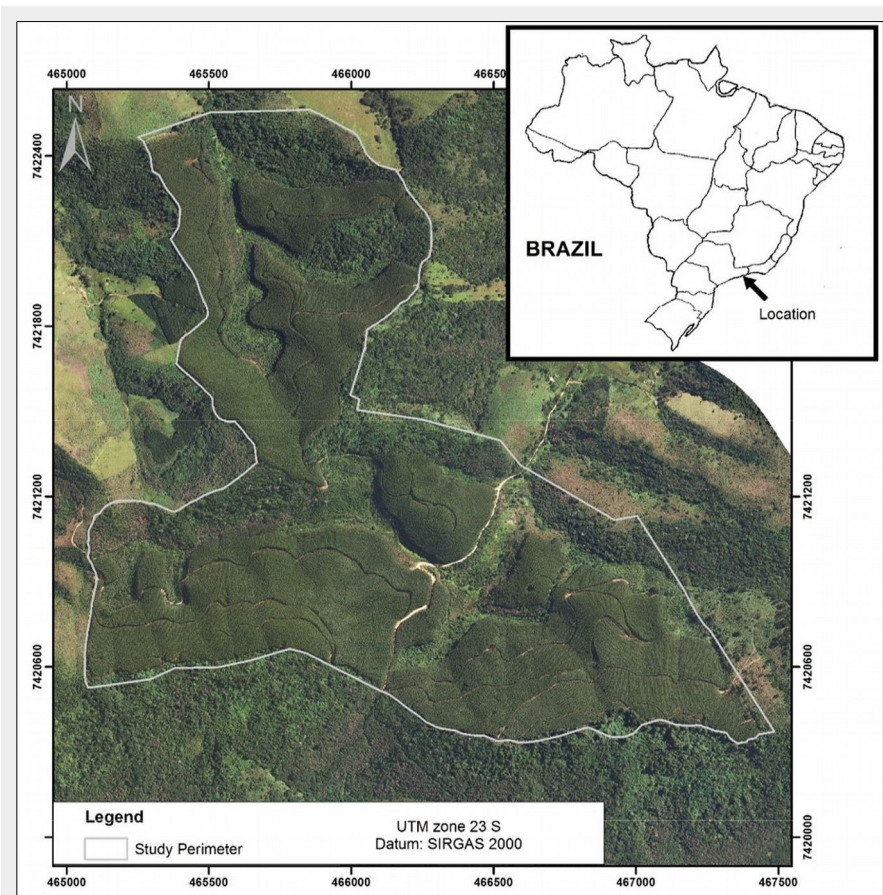


Fig. 1 - The study area near São Luiz do Paraitinga (São Paulo, Brazil), including the 6.5 year-old *Eucalyptus urograndis* forest plantation analyzed in this investigation.

vested wood was taken to a mill. The trees were planted in rows with fixed tree spacing (2 × 3 m), resulting in a density of 1667 stems per hectare.

Field measurements

Reference data were based on field measurements collected at 48 circular plots (r = 11.28 m, area of 400 m²) between April and May of 2013 prior to harvesting. In each plot, all diameter at breast height (DBH) were recorded, and the height of 10 trees were measured. Heights for all remaining trees in the plot were then estimated by applying the Curtis (1967) hypsometric model, adjusted based on the 10 measured trees in each plot. Tree volume was estimated with locally-developed volume models based on the model proposed by Schöepfer (1966 – Tab. 1). The geographical location of the plots was obtained using high-precision GPS receivers (ProXRT[®], Trimble Inc., Sunnyvale, CA, USA) at the center of each plot.

After harvesting, all wood arriving at the mill was weighed. The wood density was obtained according to Archimedes' principle and, therefore, the total volume of wood at the mill could be defined by weight-to-volume (W-V) relationships obtained in the density measurement process. A complete description can be found in Batista (2014).

Remote sensing data

ALS data were acquired by a RIEGL LMS - Q680l[®] system (Riegl GmbH, Horn, Austria) simultaneously on 15 January 2012 with aerial photographs under free-cloud conditions. The average ALS point density was 5 pulses per m². An orthophoto was generated from aerial images with a pixel size of 0.15 cm. The 4 spectral bands were blue (429-514 nm), green (514-600 nm), red (600-676 nm) and near-infrared (695-831 nm).

Initially we separated ALS ground returns from the vegetation returns, to generate a 15 cm resolution DTM and DSM, which is the minimum size resolution based on point density (McCullagh 1988). The DTM was used to normalize the point cloud, followed by the generation of the most usual metrics (such as tree height, canopy cover, topography, image bands and ratios) from each type of remote sensing data at a 5-meter resolution. This resolution was chosen following the ABA concept that pixel size should be larger than a tree crown (White et al. 2013), with *Eucalyptus* spp. crown diameter varying from 2 to 3 meters in the study area.

Predictor variables

We extracted LiDAR metrics from the ALS data (McGaughy 2013, White et al. 2013, R Developing Core Team 2007, Saarela et al. 2015) to extract image metrics (bands, ratios between bands and Normalized Difference Vegetation Index), as listed in Tab. 2. We generated the most common metrics

Tab. 1 - Descriptive statistics of the reference plots (n=48) for the basal area (G), diameter at breast height (DBH), total height (HT), dominant height (H_{DOM}) and cellulose volume without bark (V).

Variable	Min	Max	Mean	SD
G (m ² ha ⁻¹)	27.08	39.16	33.96	2.75
DBH (cm)	13.80	17.34	16.00	0.65
HT (m)	20.82	27.93	24.89	1.70
H _{DOM} (m)	25.20	33.27	29.79	2.06
V (m ³ ha ⁻¹)	223.19	391.99	331.16	37.27

(such as tree height, canopy cover, topography, image bands and ratios) from each type of remote sensing data by describing the properties of the point clouds and spectral properties of the images. For the generation of these metrics, only first returns of the ALS point cloud were used and the reflectance value of each pixel in the aerial image was aggregated into a 5 × 5 m grid cell. These metrics were then used in subsequent statistical modeling as explanatory variables. In total, 39 metrics were generated (Tab. 2).

Modeling approach to estimate total wood volume

The first step was the estimation of wood volume using the ABA. Three different methods were applied, depending on the input data source. In the first approach, only variables derived from ALS data were used, in the second approach only variables derived from the imagery were used, and in the final one we combined both sets of variables.

One of the most important considerations when working with a large number of predictor variables in a multiple linear regression is variable selection. To that end, we applied the Best Subset Selection (BSS), which matches an appropriate mod-

el to each model size (James et al. 2014, Lumley 2014, R Developing Core Team 2007). To select a model among those suggested by BSS, we applied a k-fold cross-validation (k=5). The application of a cross-validation, similar to the leave-one-out method, allows for a better understanding of model behavior, especially when using a database that was not utilized for model adjustment (James et al. 2014). After applying the cross-validation we chose the model according to the RMSE. In this study, we used a confidence interval with a p-value equal to 0.05 generated from 1000 simulations.

The total volume of the forest stands was obtained by the mean ABA estimation multiplied by the total area.

Variable selection and model adjustment

The k-fold estimate of RMSE is computed by averaging the values obtained by eqn. 1:

$$CV_k = \frac{1}{k} \sum_{i=1}^k MSE_i$$

where CV_k is the k-fold cross validation and MSE is the mean square error. The linear model assumptions were verified according to (Peña & Slate 2006), where the assumptions were verified for each of the chosen models with statistical tests and

Tab. 2 - List of the variables selected for model inclusion in each of the three approaches adopted in this study.

Data	Category	ALS metrics	Acronym
ALS	Height	Minimum height	<i>h</i> _{min}
		Maximum height	<i>h</i> _{max}
		Mean height	<i>h</i> _{mean}
		Variance of height	<i>h</i> _{var}
		Standard deviation of height	<i>h</i> _{sd}
		Coefficient of variation of height	<i>h</i> _{cv}
		Mode of height	<i>h</i> _{mode}
		Kurtosis of height	<i>h</i> _k
		Height percentiles: 1 st , 5 th , 10 th , 20 th , 25 th , 30 th , 40 th , 50 th , 60 th , 70 th , 75 th , 80 th , 90 th , 95 th , 99 th	<i>h</i> _{p01} , <i>h</i> _{p05} , <i>h</i> _{p10} , <i>h</i> _{p20} , <i>h</i> _{p25} , <i>h</i> _{p30} , <i>h</i> _{p40} , <i>h</i> _{p50} , <i>h</i> _{p60} , <i>h</i> _{p70} , <i>h</i> _{p75} , <i>h</i> _{p80} , <i>h</i> _{p90} , <i>h</i> _{p95} , <i>h</i> _{p99}
	Cover	Number of first returns above mean	<i>C</i> _{ab mean}
		Number of returns above 2 m	<i>C</i> _{ab2m}
		Percentage of canopy	<i>C</i> _%
	Topography	Slope (°)	<i>S</i>
Mean altitude		<i>A</i> _{mean}	
Aerial Image	Spectral Properties	Band 1 - blue	<i>B1</i>
		Band 2 - green	<i>B2</i>
		Band 3 - red	<i>B3</i>
		Band 4 - near infrared	<i>B4</i>
		Simple ratio between bands B1/B2, B1/B3, B1/B4, B2/B3, B2/B4, B3/B4	<i>B1/B2</i> , <i>B1/B3</i> , <i>B1/B4</i> , <i>B2/B3</i> , <i>B2/B4</i> , <i>B3/B4</i>
		Normalized Difference Vegetation Index	<i>NDVI</i>

Tab. 3 - Fitting statistics of the best regression models used to estimate the total tree volume in the investigated area with three different approaches. (MD): Mean difference; (RMSE): root mean squared error; (Adj): Adjusted. For the acronym of variables included in the models, see Tab. 2.

Approach	Regression Model Form	Adj-R ²	MD	MD %	RMSE	RMSE %	p-value (t-test)
(1) ALS data	$-585.17 + 22.48 \cdot (h_{p20}) - 165.27 \cdot (h_{p40}) + 170.09 \cdot (h_{p50}) + 0.22 \cdot (A_{mean})$	0.65	0.032	0.001	22.79	6.84	0.993
(2) Aerial images	$-585.17 + 7.859 \cdot (B3) - 16167.59 \cdot (NDVI) - 5101.24 \cdot (B1/B3) + 15192.15 \cdot (B1/B4)$	0.48	0.64	0.19	28.17	8.45	0.883
(3) Both datasets	$-625.16 + 27.74 \cdot (h_{mode}) + 0.32 \cdot (A_{mean}) + 1.97 \cdot (B4) - 377.84 \cdot (B2/B3)$	0.79	-0.06	-0.018	17.43	5.23	0.983

graphical analysis (Peña & Slate 2014, R Developing Core Team 2007). The approach was then chosen based on the lowest RMSE and the linear model assumptions analysis, generating a predicted wood volume map for the entire study area. This prediction was validated with stand inventory data and information about tree volume received by the mills, after harvesting.

Individual tree volume

Individual Tree Detection based on aerial images

For the second step we used high resolution multispectral images for detecting individual treetops, applying the local maximum filtering method, where the central location of the crown is assigned the highest spectral value (Wang et al. 2004, Kumar 2012). We applied fixed and varying sizes of moving window, based on the methodology proposed by Kumar (2012) and Pereira (2014). The window sizes varied from 0×3 m, 0×5 m, 0×7 m to 0×9 m (Kumar 2012, Pereira 2014). The individual tree detection procedure was performed for each of the 4 spectral bands, and the first principal component (first PCA) of the bands (Wang et al. 2004). According to Wang et al. (2004), the PCA effectively aggregates a large quantity of information and shows good results for ITD.

To generate the final ITD product, all five intermediate outputs were used. First, the layer with the highest number of detected trees, with their locations visually cor-

rected, was taken as the basis for ITD. From this layer, we removed all the tree-tops in a 0.7 m buffer around each tree to avoid multiple peaks from single tree. Tree-tops detected in the second layer, outside this buffer were added creating a new layer of additional ITD points. This layer was then taken as the new basis for ITD. This procedure was repeated until all layers had contributed to the generation of a single ITD layer.

Merging the ITD approach with ABA

Based on the final ITD layer, stem counts were aggregated into 5 × 5 m grid cells, according to ABA. Following this, the number of trees in each grid cell was identified by local maxima derived from the ITD approach, resulting in a graphical representation of the number of trees per hectare for the entire study area.

Detection and correction of the mean difference (MD) in total area

The mean difference (MD) detection of the ITD approach was done by comparing the number of detected trees and the number of observed trees in the inventory plots. The difference between the two was considered the response variable, while the ALS and image variables were considered the predictor variables, leading to the modeling of the ITD mean difference, and its prediction for the entire study area. In our case this MD was modeled with 3 variables, maximum height, slope, and ITD detection, as explanatory variables. These variables were selected by applying the

Best Subset Selection method and cross-validation, as described earlier. The MD detection model was applied to the entire study area, representing the MD per hectare, to correct the initial estimates of tree count per pixel.

Estimating individual tree volume

In order to generate the volume per tree in each 5 × 5 m cell, the previously-estimated stand volume for the entire study area (m³ ha⁻¹), obtained by the integration of ALS data and high-resolution imagery, was divided by the number of trees per hectare detected by the ITD approach.

Results

Modeling approach to estimate total wood volume

The best fitting models obtained by cross-validation contained 4 parameters, including the intercept, for all the three approaches tested (Tab. 3). In the first approach (using ALS data variables only), the chosen model was based on height percentiles (h_{p20} , h_{p40} , h_{p50}) and elevation (A_{mean}). In the second approach, where only image predictors were used, the selected variables were $B3$, $NDVI$, $B1/B3$ and $B1/B4$. In the third approach, where both remote sensing data sources were used as predictors, two ALS-based and two image-based variables were selected (h_{mode} , A_{mean} , $B4$, $B2/B3$). The RMSE for each approach was 6.84%, 8.45% and 5.23%, respectively. Among the three analyzed approach, we chose the model that combined ALS data

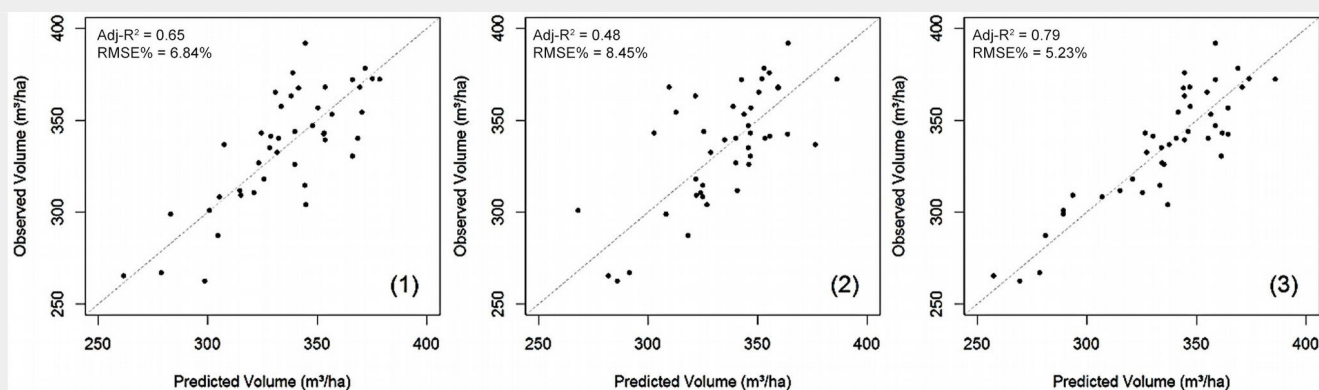


Fig. 2 - Scatterplot of the observed and predicted values of stand volume for each of the approaches analyzed in this study. (1) ALS data; (2) aerial images; (3) both datasets.

and image information, according to the corresponding adjusted R^2 value (Tab. 3).

Fig. 2 displays the relationship between the observed and predicted values of stand volume obtained for each approach. Although the homoscedasticity of residuals was not rejected, their distribution was asymmetric in the first and second approach, suggesting non-normality, while in approach 3 the distribution of residuals showed to match a normal distribution. Therefore, the third approach was selected for wall-to-wall stand volume prediction and subsequent comparisons with the inventory and mill-based volumes as reference values.

Across the whole study area, the mean estimated volume per hectare based on the ABA method was 319.9 m^3 , totaling $44,466.1 \text{ m}^3$. When this result was compared with the volume measured at the mill (considered the true volume by the company), we found a difference of 2.98%, while when comparing the forest inventory data with the mill volume, it overestimated by 3.29%. In addition, it was observed that the combination of both ALS and imagery data could provide more information regarding the occurrence of drought and canopy gaps in the forest.

Semi-ITD approach to estimate wood volume per tree

Overall, using the ABA method 151,048 trees were detected in the study area, with an average of $994 \text{ trees ha}^{-1}$, while the average number of trees per hectare estimated by the forest inventory was $1708 \text{ trees ha}^{-1}$. Therefore, approximately 42% of the trees were not detected using the above approach, reinforcing the need to correct the remotely sensed tree count by modeling the tree count mean difference (MD).

After identifying the predictive mean difference model, we performed a linear adjustment using the least squares method. The model selected used three variables: maximum height (h_{\max}); the slope (S) estimated from ALS data; and the number of trees detected in the aerial images found using the semi-ITD approach (Tab. 3), which had an RMSE of 12.66%.

The average number of trees per hectare detected by the conversion of ITD into ABA (semi-ITD) for the study area after mean difference (MD) correction was 1707.7, while the inventory data provided a figure of 1708.3 trees per hectare. Therefore, the mean volume per tree estimated from study data was 0.188 m^3 , while the mean volume of an individual tree derived from forest inventory was 0.195 m^3 . Fig. 3 shows the wall-to-wall tree volume maps generated in this work.

Discussion

Accurate stand attribute estimates are critical for effective forest plantation management, partly due to their markedly shorter rotation ages and faster growth rates relative to natural forests (Packalén

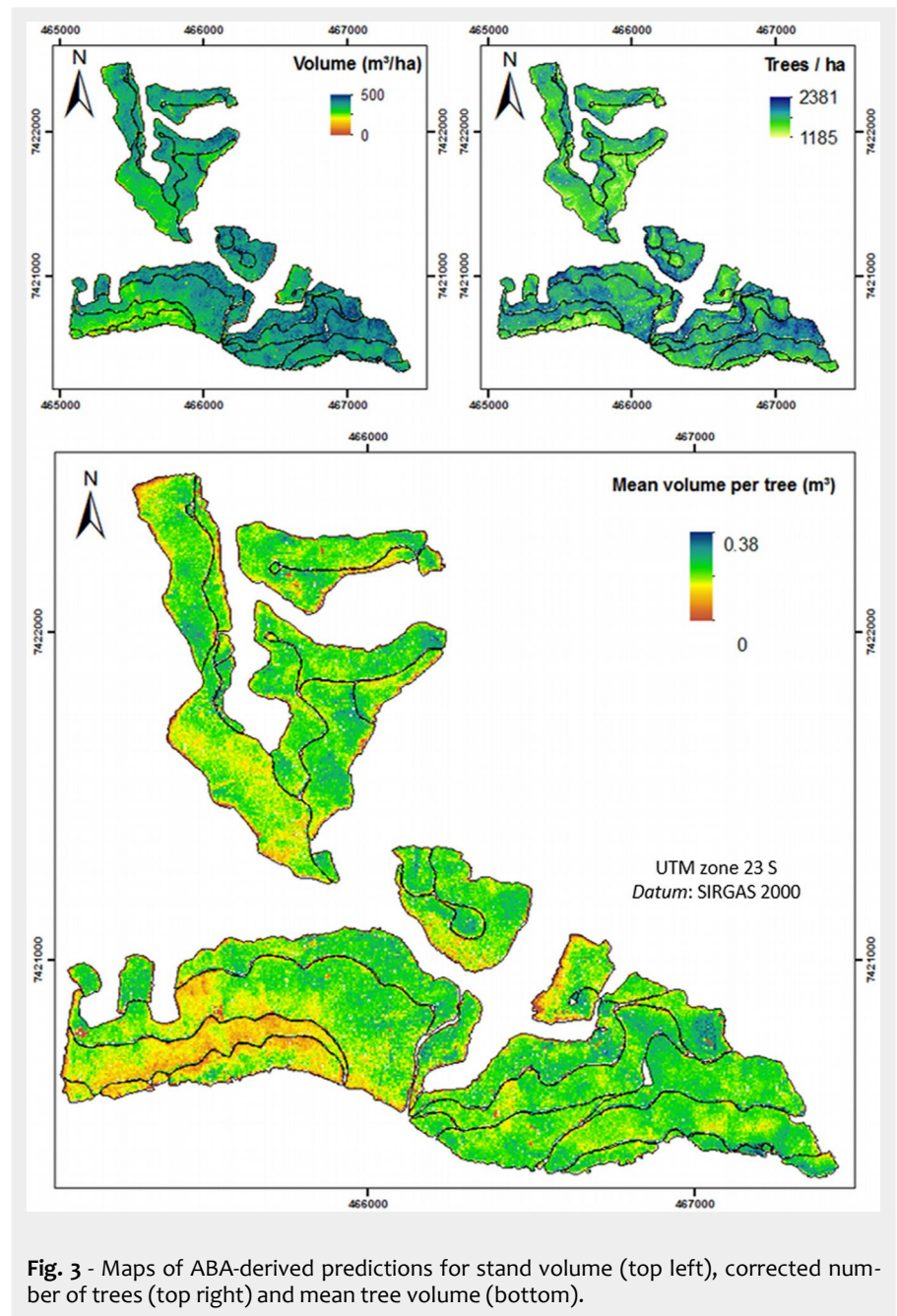


Fig. 3 - Maps of ABA-derived predictions for stand volume (top left), corrected number of trees (top right) and mean tree volume (bottom).

et al. 2011). Moreover, for proper management of forest plantations, information on individual trees is of high value (Simões 2008). Remote sensing has proven to be an excellent data source for supporting sustainable forest management (Wulder et al. 2000). However, obtaining accurate estimates of forest attributes is often still elusive (Saarela et al. 2015). Our results indicate that the combination of different remote sensing data sources to estimate stand volume can lead to improved accuracy of predictions (RMSE = 5.23%).

In this research, we used two approaches to estimate stand volume in *Eucalyptus* spp. plantations using ALS as well as high spatial resolution multispectral image data. We first modeled the stand volume using ABA with different combinations of ALS- and image-derived metrics as input data, in three different models. Despite ABA

slightly underestimated stand volume (2.98%) compared to the reference volume (total wood volume measured at the mill) the results were close to those obtained by the forest inventory. However this approach could be enhanced by predicting the number of trees using the ITD approach, this introducing a correction method to improve tree count predictions. We then integrated that information with stand volume previously predicted using the ABA method, allowing for the calculation of mean individual tree volume.

The model applied in the volumetric prediction used two variables derived from aerial imagery, the near infrared band (B_4) and the green/red (B_2/B_3) ratio, and two ALS-derived variables of height (h_{mode}) and cover (A_{mean}). Using the ratio between the green and red bands is analogous to using the near infrared and red bands ratio. The

reflectance in the near infrared band is linked to scattering in the mesophyll, which occurs due to the interaction of solar radiation with the internal leaf structure (Campbell & Wynne 2011). Similarly, green wavelengths are reflected by mesophilic leaf tissues, while red light is absorbed by chlorophyll (Campbell & Wynne 2011). Therefore, the ratio between these bands is indicative of vegetative vigor and vegetative abundance. Both vigor and abundance information were important complements to the ALS metrics.

Despite the use of high-resolution imagery, the second approach (which used the aerial image variables) showed the poorest performance among the three approaches tested (RMSE = 8.45%).

Our results show that use of information from a single remote sensing technology can meet the predictive needs of plantation managers, so long as expectations of accuracy and precision are attained accordingly. However, our results also highlight that the integration of data from multiple remote sensing technologies, such as the ALS and high-resolution passive imagery data used here, can lead to more accurate results than the use of a single technology.

This improvement in accuracy is achievable even in situations where the difference in time between data acquisition (2012) and field measurement (2013) is up to one year, as is the case in this study. Because ALS data acquisition can be costly, the field measurement-remote sensing hybrid approach can be of remarkable benefit to forest managers. The integration of data from different sources with different acquisition dates can increase the useful life of forest attribute data collected by any means, potentially decreasing the frequency of acquisition and therefore reducing costs.

While ABA provided estimates of total wood volume for the entire study area, individual tree delineation, detected from passive image data, allowed us to down-scale the estimates to the individual tree level. Images were used for tree detection instead of ALS data because the trees were planted at a relatively high density (3 × 2 m) resulting in small canopy sizes. Their small size made it challenging for crowns to intercept a sufficient number of LiDAR points for crown extent to be accurately defined. Therefore, the performance of ALS was poorer when detecting individual trees compared to image-based approaches.

Despite improvements over ALS data, we still found the accuracy of single tree detection from images to be unsatisfactory (58% correctly detected trees) and so a correction factor was introduced. This correction, based primarily on slope, allowed us to increase the accuracy of single tree detection and achieve unbiased individual tree volume estimates. Slope proved to be a key variable to include in the modeling of

tree detection error. With increasing slope more trees were located in the same projected area, leading to an aggregation of the canopies and an increase in the maximum tree height of the inventory plots. Increased maximum tree height, therefore, showed a higher correlation with the standard deviation (i.e., heterogeneity) of a plot, which made tree detection from the images more difficult.

In general, the correction procedure applied to our tree counting process performed well, showing good agreement with existing tree count estimates and leading to individual tree volumes with negligible mean difference and low RMSE (12.66%). Our corrected estimates of tree count were greater than uncorrected values identified from the image-based detection by 713.7 trees per hectare, very close to extant estimates based on the forest inventory. The final estimates of individual tree volume after mean difference correction were 0.188 m³ per tree, 3.5% less than the inventory estimate (Simões 2008, Packalén et al. 2011).

We demonstrated that a traditional ITD approach can be modified by using ABA, in spite of losing the exact location of each tree, but enabling to obtain the desired tree density information (Breindenbach & Astrup 2014).

Conclusions

Accurate information about wood volume at both the stand and individual tree levels is required to support the effective management of forest plantations. In this study we enhanced the traditional area-based approach using individual tree detection. The integration of geometrical and spectral information provided by ALS and aerial imagery, respectively, allows for the reliable predictions of volume at both spatial scales. Moreover, remote sensing data integration results in lower mean difference and RMSE. Our approach allowed for the estimation of individual tree volume with negligible bias.

Acknowledgements

The authors would like to acknowledge the Brazilian Research Foundation, CNPq, and the National Institute for Space Research (INPE) for supporting this research, FIBRIA S/A cellulose company for supplying data from their plantation, and the Integrated Remote Sensing Studio (IRSS) at the Faculty of Forestry, University of British Columbia, Canada, for its assistance, support and friendship. David Williams provided some editorial assistance.

References

Batista JLF (2014). Quantificação dos recursos florestais – árvores, arvoredos e florestas [Quantification of forest resources - trees, grove and forests]. Oficina de Textos, São Paulo, Brazil, pp. 384. [in Portuguese]

Brandtberg T, Warner TA, Landenberger RE, McGraw JB (2003). Detection and analysis of

individual leaf-off tree crowns in small footprint, high sampling density lidar data from the eastern deciduous forest in North America. *Remote Sensing of Environment* 85: 290-303. - doi: [10.1016/S0034-4257\(03\)00008-7](https://doi.org/10.1016/S0034-4257(03)00008-7)

Breindenbach J, Astrup R (2014). The semi-individual tree crown approach. In: "Forestry Applications of Airborne Laser Scanning: Concepts and Case Studies" (Maltamo M ed). Springer Science + Business Media, Dordrecht, Netherlands, pp. 113-133.

Campbell JB, Wynne RH (2011). Introduction to remote sensing. The Guildford Press, New York, USA, pp. 667. [online] URL: <http://books.google.com/books?id=NkLmDjSS8TsC>

CEPAGRI (2014). Clima dos municípios paulistas [Climate of the municipalities of São Paulo]. Web site. [in Portuguese] [online] URL: http://www.cpa.unicamp.br/outras-informacoes/clima_muni_562.html

Curtis R (1967). Height-diameter and height-diameter-age equations for second-growth Douglas-fir. *Forest science* 13 (4): 365-375. [online] URL: <http://www.ingentaconnect.com/content/saf/1967/00000013/00000004/art00007>

Ferreira M (1979). Escolha de espécies de eucalipto [Choosing *Eucalyptus* species]. Circular Técnica IPEF, Piracicaba, Brazil, vol. 47, pp. 1-30. [in Portuguese]

Hudak AT, Lefsky M, Cohen WB, Berterretche M (2002). Integration of lidar and Landsat ETM+ data for estimating and mapping forest canopy height. *Remote Sensing of Environment* 82: 397-416. - doi: [10.1016/S0034-4257\(02\)00056-1](https://doi.org/10.1016/S0034-4257(02)00056-1)

IBA (2014). Indústria Brasileira de Árvores [Brazilian Industry of trees]. IBA, Brasília, Brazil, pp. 100. [in Portuguese] [online] URL: http://www.bracelpa.org.br/shared/iba_2014_pt.pdf

James G, Witten D, Hastie T, Tibshirani R (2014). An introduction to statistical learning with applications in R. Springer Science+Business Media, New York, USA, pp. 426.

Kaartinen H, Hyppä J, Yu X, Vastaranta M, Hyppä H, Kukko A, Holopainen M, Heipke C, Hirschmugl M, Morsdorf F, Naesset E, Pitkänen J, Popescu S, Solberg BMW, Wu J (2012). An international comparison of individual tree detection and extraction using airborne laser scanning. *Remote Sensing* 4: 950-974. - doi: [10.3390/rs4040950](https://doi.org/10.3390/rs4040950)

Köppen W, Geiger R (1954). Klima der Erde (Climate of the earth). Wall Map 1:16 Mill. Klett-Perthes, Gotha, Germany. [online] URL: http://koeppen-geiger.vu-wien.ac.at/pics/Geiger_1954_Map.jpg

Kumar V (2012). Forest inventory parameters and carbon mapping from airborne LiDAR. Dissertation, The University of Twente, Enschede, The Netherlands, pp. 89.

Lumley T (2014). LEAPS: R package version 2.9 for regression subset selection including exhaustive search. University of Washington, Washington, DC, USA, pp. 8. [online] URL: <http://cran.r-project.org/web/packages/leaps/leaps.pdf>

Mccullagh MJ (1988). Terrain and surface modeling systems: theory and practice. *Photogrammetric Record* 2 (72): 747-749. - doi: [10.1111/j.1477-9730.1988.tb00627.x](https://doi.org/10.1111/j.1477-9730.1988.tb00627.x)

McGaughey RJ (2013). FUSION/LDV: software for LiDAR data analysis and visualization. Pacific

- Northwest Research Station, USDA Forest Service, WA, USA, pp. 150. [online] URL: <http://forsys.cfr.washington.edu>
- Mehtätalo L, Nyblom J, Virolainen A (2014). A model-based approach for the recovery of forest attributes using airborne laser scanning data. In: "Forestry Applications of Airborne Laser Scanning: Concepts and Case Studies" (Maltamo M ed). Springer Science + Business Media, Dordrecht, Netherlands, pp. 193-211. - doi: [10.1007/978-94-017-8663-8_10](https://doi.org/10.1007/978-94-017-8663-8_10)
- Monnet J, Mermim E, Chanussot J, Berger F (2010). Tree top detection using local maxima filtering: a parameter sensitivity analysis. In: Proceedings of the "10th International Conference on LiDAR Application for Assessing Forest Ecosystems". Freiburg (Germany) Sep 2010. Silvaser 2010, Freiburg, Germany, pp. 9. [online] URL: <http://hal-sde.archives-ouvertes.fr/hal-00523245>
- Næsset E (2002). Predicting forest stand characteristics with airborne laser using a practical two-stage procedure field data. *Remote Sensing of Environment* 80: 88-90. - doi: [10.1016/S034-4257\(01\)00290-5](https://doi.org/10.1016/S034-4257(01)00290-5)
- Packalén P, Mehtätalo L, Maltamo M (2011). ALS-based estimation of plot volume and site index in a *Eucalyptus* plantation with a nonlinear mixed-effect model that accounts for the clone effect. *Annals of Forest Science* 68: 1085. - doi: [10.1007/s13595-011-0124-9](https://doi.org/10.1007/s13595-011-0124-9)
- Paris C, Bruzzone LA (2015). Three-dimensional model-based approach to the estimation of the tree top height by fusing low-density LiDAR data and very high resolution optical images. *IEEE Transactions on Geoscience and Remote Sensing* 53 (1): 467-480. - doi: [10.1109/TGRS.2014.2324016](https://doi.org/10.1109/TGRS.2014.2324016)
- Payn T, Carnus J, Freer-smith P, Kimberley M, Kollert W, Liu S, Orazio C, Rodriguez L, Silva LN (2015). Changes in planted forests and future global implications. *Forest Ecology and Management* 352: 57-67. - doi: [10.1016/j.foreco.2015.06.021](https://doi.org/10.1016/j.foreco.2015.06.021)
- Peña EA, Slate EH (2006). Global validation of linear model assumptions. *Journal of the American Statistical Association* 101 (473): 341-354. - doi: [10.1198/016214505000000637](https://doi.org/10.1198/016214505000000637)
- Peña EA, Slate EH (2014). Gvlma: Global validation of linear models assumptions. R package version 1.0.0.2. [online] URL: <http://CRAN.R-project.org/package=gvlma>
- Pereira JP (2014). Mensuração automática de copas de *Araucaria angustifolia* (Bertol.) Kuntze a partir de dados LiDAR para estimativa de variáveis dendrométricas [Automatic measurement of *Araucaria angustifolia*'s crowns (Bertol.) Kuntze from LiDAR data to estimate dendrometric variables]. Dissertation, State University of Santa Catarina, Brazil, pp. 174. [in Portuguese]
- Persson A, Holmgren J, Söderman U (2002). Detecting and measuring individual trees using airborne laser scanner. *Photogrammetric Engineering and Remote Sensing* 68 (9): 925-932.
- Popescu SC, Wynne RH, Nelson RF (2002). Estimating plot level tree heights with lidar: local filtering with canopy-height based variable window size. *Computers and Electronics* 37: 71-95. - doi: [10.1016/S0168-1699\(02\)00121-7](https://doi.org/10.1016/S0168-1699(02)00121-7)
- R Developing Core Team (2007). R: a language and environment for statistical computing. R Foundation for Statistical Computing, Vienna, Austria. [online] URL: <http://www.r-project.org>
- Roberts SD, Dean TJ, Evans DL, McCombs JW, Harrington RL, Glass PA (2005). Estimating individual tree leaf area in loblolly pine plantations using LiDAR-derived measurements of height and crown dimensions. *Forest Ecology and Management* 213: 54-70. - doi: [10.1016/j.foreco.2005.03.025](https://doi.org/10.1016/j.foreco.2005.03.025)
- Saarela S, Grafström A, Stahl G, Kangas A, Holopainen M, Tuominen S, Nordkvist K, Hyypä J (2015). Model-assisted estimation of growing stock volume using different combinations of LiDAR and Landsat data as auxiliary information. *Remote Sensing of Environment* 158: 431-440. - doi: [10.1016/j.rse.2014.11.020](https://doi.org/10.1016/j.rse.2014.11.020)
- Schöpfer W (1966). Automatisierung des massen, sorten und wertberechnung stenender waldbestände Schriftenreihe Bad [Automation of the mass, varieties and value for calculating forest stock series]. Wurtl-Forstl, Koblenz, Germany.
- Silva CA, Klauber C, Carvalho SPC, Hudak AT, Rodriguez LCE (2014). Mapping aboveground carbon stocks using LiDAR data in *Eucalyptus* spp. plantations in the state of São Paulo, Brazil. *Scientia Forestalis* 42 (104): 591-604. [online] URL: <http://www.treesearch.fs.fed.us/pubs/48607>
- Simões D (2008). Avaliação econômica de dois sistemas de colheita florestal mecanizada de eucalipto [Economic evaluation of two systems of mechanized forest harvest of *Eucalyptus*]. Master Thesis, Faculty of Agronomic Sciences Ciências, UNESP, Botucatu, SP, Brazil, pp. 105. [in Portuguese] [online] URL: <http://www.pg.fca.unesp.br/Teses/PDFs/Arqo286.pdf>
- Vastaranta M, Holopainen M, Yu X, Hyypä J, Mäkinen A, Rasinmäki J, Melkas T, Kaartinen H, Hyypä H (2011). Effects of individual tree detection error sources on forest management planning calculations. *Remote Sensing* 3: 1614-1626. - doi: [10.3390/rs3081614](https://doi.org/10.3390/rs3081614)
- Wang L, Gong P, Biging GS (2004). Individual tree-crown delineation and treetop detection in high-spatial-resolution aerial imagery. *Photogrammetric Engineering and Remote Sensing* 70 (3): 351-357. - doi: [10.14358/PERS.70.3.351](https://doi.org/10.14358/PERS.70.3.351)
- White JC, Wulder MA, Varhole A, Vastaranta M, Coops NC, Cook DC, Pitt D, Woods M (2013). A best practices guide for generating forest inventory attributes from airborne laser scanning data using an area-based approach (Version 2.0). Information Report FI-X-010, Natural Resources Canada, Canadian Forest Service and Canadian Wood Fiber Centre, Victoria, BC, Canada, pp. 41. [online] URL: <http://www.cfs.nrcan.gc.ca/pubwarehouse/pdfs/34887.pdf>
- Wulder M, Niemann KO, Goodenough DG (2000). Local Maximum Filtering for the extraction of tree locations and basal area from high spatial resolution imagery. *Remote Sensing of Environment* 73: 103-114. - doi: [10.1016/S0034-4257\(00\)00101-2](https://doi.org/10.1016/S0034-4257(00)00101-2)
- Wulder M, Seemann D (2003). Forest inventory height update through the integration of lidar data with segmented Landsat imagery. *Canadian Journal of Remote Sensing* 29 (5): 536-543. - doi: [10.5589/m03-032](https://doi.org/10.5589/m03-032)
- Zhu X, Liu D (2015). Improving forest above-ground biomass using seasonal Landsat NDVI time-series. *ISPRS Journal of Photogrammetry and Remote Sensing* 102: 222-231. - doi: [10.1016/j.isprsjprs.2014.08.014](https://doi.org/10.1016/j.isprsjprs.2014.08.014)